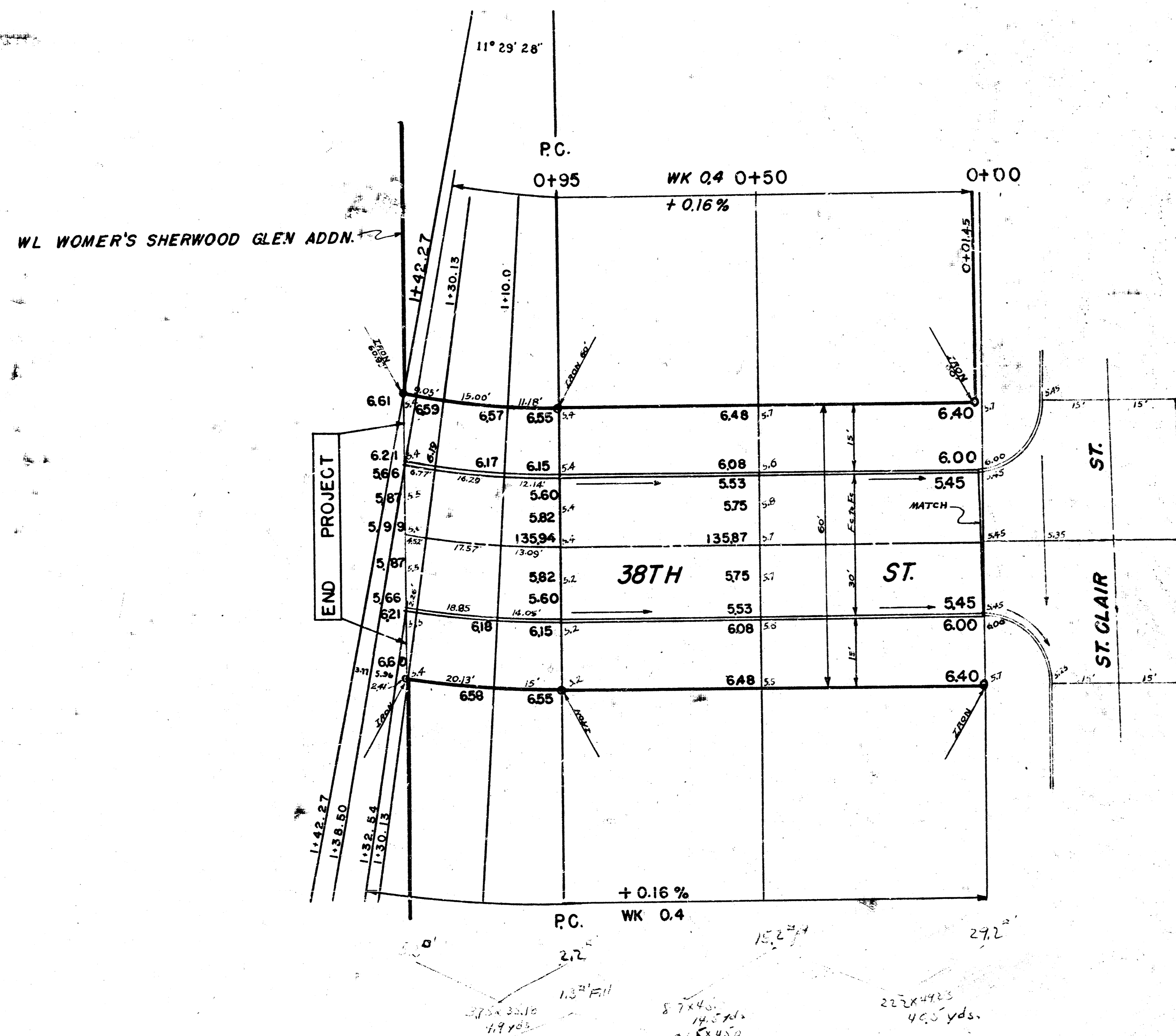


BM ELEV. 136.71 = \square CUT ON NE COR. WK. TO PLEASANT VALLEY SCHOOL SO. LINE 37TH.

BASELINE = SL 38TH ST.

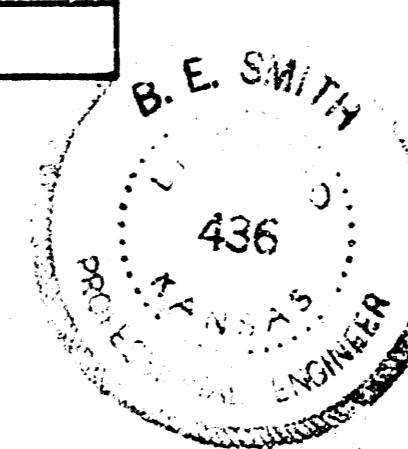
N
SCALE: 1" = 20'



CURVE DATA BASED ON S. R. Δ: 11° 29' 28" R: 235.69' Min Per Ft: 07.29294

Station	Arc	CHORD 8' @ ft. Sa. Cb	CHORD 8' @ ft. No. Cb	Def.	Total Def.
PC. 0+95	-	-	-	-	0° 00' 00"
1+10	15.00'	14.55	11.62	1° 49' 24"	1° 49' 24"
1+30.13	20.13	19.53	15.60	2° 26' 48"	4° 16' 12"
1+32.54	2.41	2.34	1.87	0° 17' 35"	4° 33' 47"
1+38.50	5.96	5.78	4.62	0° 43' 24"	5° 17' 11"
1+42.27	3.71	3.67	2.92	0° 27' 33"	5° 44' 44"

	PROPERTY	
	EXCAVATION	COMP. FILL
	59.9 Cu. yds.	1.9 Cu. yds.
+10%	6.0	.2
TOTAL	65.9	2.1



38TH STREET NORTH
 WL ST. CLAIR TO WL WOMER'S SHERWOOD GLEN ADDN.
30' CONCRETE & CURB
 B. E. SMITH CITY ENGINEER
 CITY OF WICHITA, KANSAS
 DATE: MARCH 1965 PROJECT NO. C15-74