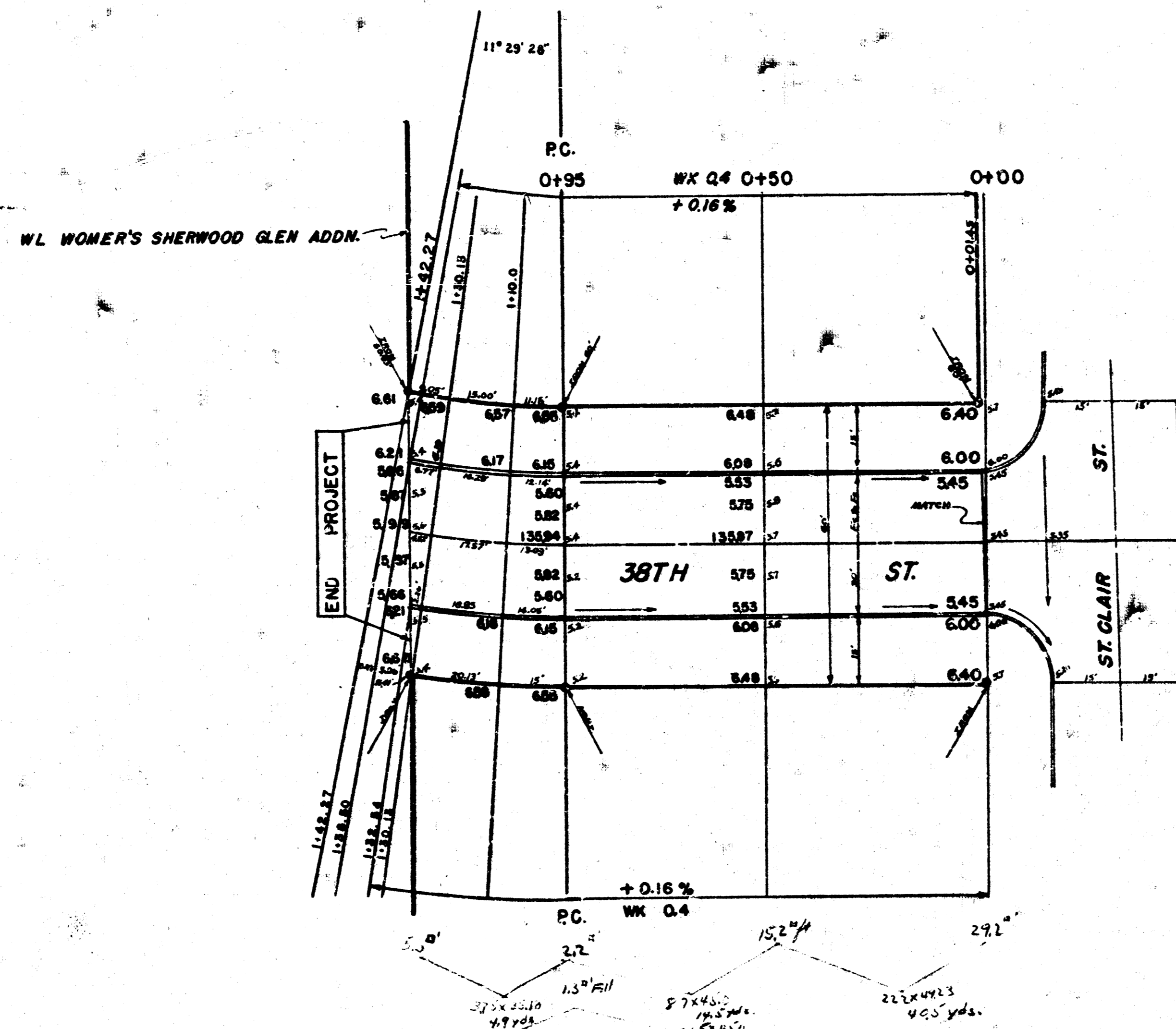
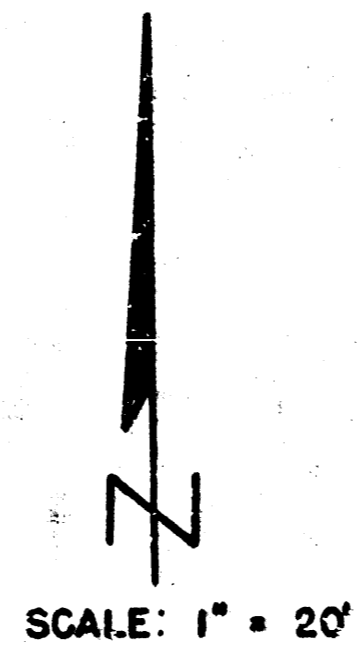


BM ELEV 136.71 = \bar{D} CUT ON NE COR. WK. TO PLEASANT VALLEY SCHOOL SO. LINE 37TH.

BASELINE - SL 38TH ST.



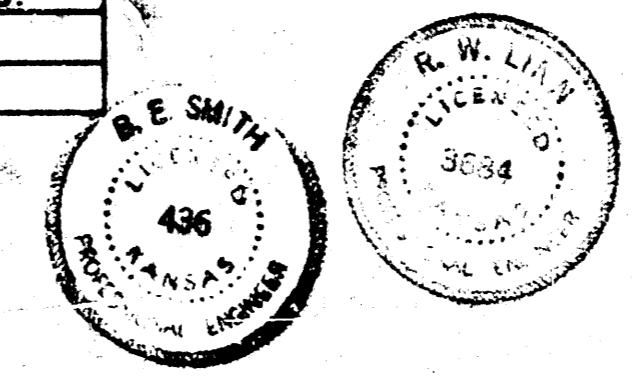
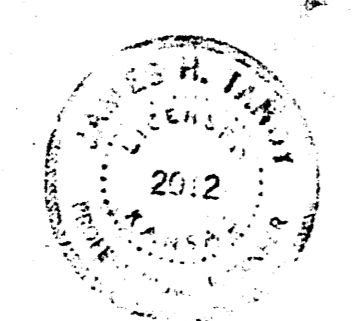
BUREAU OF PUBLIC WORKS
 CITY OF WICHITA, KANSAS
 ENGINEER
 B. E. SMITH

CURVE DATA BASED ON S.E. Δ 11° 29' 24" R=235.65' Min. P+ 07.29294

Station	Arc	Chord	Chord	Def.	Total Def.
		S' & T' S. C.	S' & T' N. C.		
P.C. 0+95					0° 00' 00"
1+10	15.00	14.55	11.62	1° 49' 24"	1° 49' 24"
1+30.19	20.19	18.53	15.60	2° 26' 43"	4° 16' 12"
1+52.66	25.1	2.34	1.87	0° 17' 35"	4° 33' 47"
1+38.50	6.36	5.78	4.62	0° 43' 24"	5° 17' 11"
1+42.27	3.71	3.67	2.94	0° 27' 34"	5° 44' 45"

	PROPERTY	
	EXCAVATION	COMP. FILL
+10%	58.9	1.9
75%AL	60	2
	65.9	2.7

38TH STREET NORTH
 WL ST. CLAIR TO WL WOMER'S SHERWOOD GLEN ADDN.
30' CONCRETE & CURB
 B. E. SMITH CITY ENGINEER
 CITY OF WICHITA, KANSAS
 DATE, MARCH 1968 PROJECT NO. 515-74



11 1-1-68 1