

PAVING PLANS FOR NORTHBROOK MEADOW 2ND ADDITION PHASE 2

39TH. ST. N. COURT. SERVING LOTS 1 THROUGH 9 INCLUSIVE, BLOCK 1

PROJECT NO. 472-82068

CITY OF WICHITA, KANSAS
MICHAEL E. LINDEBAK, CITY ENGINEER

INDEX CODE 761320

⊕ BM #1

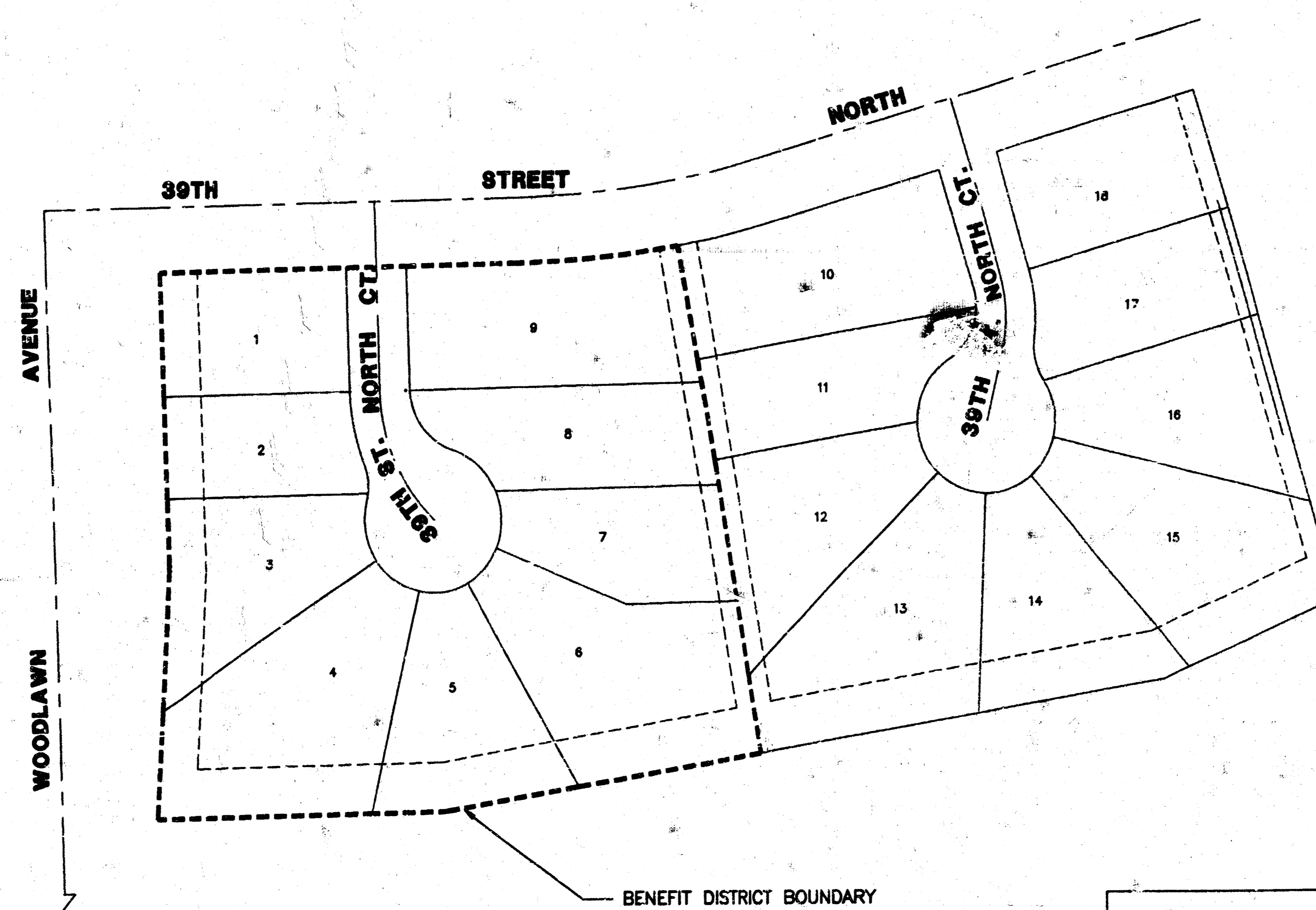
GENERAL NOTES

1. UNLESS SHOWN OR STATED OTHERWISE ON THESE DRAWINGS, MATERIALS AND CONSTRUCTION SHALL BE IN ACCORDANCE WITH CITY OF WICHITA CONCRETE PAVEMENT AND ASPHALTIC CONCRETE PAVEMENT SPECIFICATIONS.
2. THE CONTRACTOR SHALL BE RESPONSIBLE FOR PRESERVING PROPERTY IRONS. THE CONTRACTOR WILL BE REQUIRED TO RE-ESTABLISH ANY PROPERTY IRONS WHICH ARE DAMAGED OR DESTROYED BY HIS CONSTRUCTION OPERATIONS. SUCH IRONS SHALL BE RE-ESTABLISHED BY A LICENSED LAND SURVEYOR IN ACCORDANCE WITH STATE LAWS.
3. TRANSITION CURB FROM FULL HEIGHT COMBINATION CURB AND GUTTER TO ROLL TYPE COMBINATION CURB AND GUTTER IS TO BE PAID AS BID FOR LINEAL FEET COMBINED CURB AND GUTTER (3 5/8" ROLL).
4. EXISTING UTILITIES AND THEIR LOCATIONS, AS SHOWN ON THE PLANS REPRESENT THE BEST INFORMATION OBTAINABLE FOR DESIGN. LOCATION INFORMATION HAS BEEN OBTAINED FROM THE VARIOUS UTILITY COMPANIES AND IS EITHER FROM COMPANY RECORD DRAWINGS OR COMPANY PROVIDED FIELD LOCATIONS. THE PLAN LOCATIONS SHOWN ARE NOT GUARANTEED. ADDITIONAL EXISTING UTILITIES MAY ALSO BE ENCOUNTERED.
5. CONTRACTOR WILL BE REQUIRED TO PROVIDE A MINIMUM ADVANCE NOTICE OF FORTY-EIGHT (48) HOURS TO UTILITY COMPANIES PRIOR TO STARTING ANY EXCAVATION AS FOLLOWS:

KANSAS ONE-CALL	1-800-344-7233
	OR 687-2470 (LOCAL WICHITA)

THE CONTRACTOR MUST NOTIFY THE FOLLOWING IN CASE OF AN EMERGENCY:

SOUTHWEST BELL TELEPHONE COMPANY	1-571-2115
CABLEVISION	262-4270 OR 263-2061
KPL GAS SERVICE COMPANY	263-7511
KANSAS GAS & ELECTRIC	284-1141
CITY OF WICHITA WATER DEPARTMENT	268-4908
ARKLA GAS COMPANY	942-8350 OR 263-8181
CITY OF WICHITA SEWER MAINTENANCE	268-4071
6. RUBBLE FROM THE REMOVAL OF MISCELLANEOUS STRUCTURES AND EXCESS EXCAVATION WHICH IS TO BE WASTED SHALL BE DISPOSED OF ON SITES TO BE PROVIDED BY THE CONTRACTOR. THESE SITES SHALL BE APPROVED BY THE ENGINEER AS TO SUITABILITY, APPEARANCE AND SITE LOCATION. LOCATIONS THAT, IN THE OPINION OF THE ENGINEER, WILL LEAVE AN UNSIGHTLY APPEARANCE WILL NOT BE APPROVED. ALL DISPOSAL SITES MUST BE APPROVED BY THE KANSAS DEPARTMENT OF HEALTH AND ENVIRONMENT. MATERIAL EITHER STOCKPILED OR DISPOSED OF IN A FLOOD PLAIN WOULD REQUIRE A KANSAS STATE BOARD OF AGRICULTURE PERMIT. ANY MATERIAL DUMPED IN WATERS OF THE UNITED STATES OR WETLANDS IS SUBJECT TO U.S. CORPS OF ENGINEERS PERMITTING REGULATIONS. ANY MATERIAL BURIED OR STOCKPILED BEYOND APPROVED CONSTRUCTION LIMITS WOULD REQUIRE ADDITIONAL ARCHAEOLOGICAL INVESTIGATIONS UNLESS BURIED IN A PREVIOUSLY APPROVED BORROW LOCATION.
7. THIS PROJECT INCLUDES A CERTAIN AMOUNT OF ROLL TYPE CURB CONSTRUCTION. ROLL CURBS SHALL BE DEPRESSED THROUGH ALL DRIVEWAY OPENINGS WHEN SUCH DRIVES ARE CONSTRUCTED AS A PART OF THE PROJECT. NO MORE THAN 2 DRIVES 20 FEET IN WIDTH OR EQUIVALENT COMBINATIONS THEREOF ARE TO BE CONSTRUCTED WITH THIS PROJECT.
8. A SAW CUT OF AT LEAST ONE-HALF THE DEPTH OF THE EXISTING SURFACE COURSE OR ONE-FOURTH THE DEPTH OF THE EXISTING TOTAL PAVEMENT THICKNESS SHALL BE PROVIDED AT LOCATIONS WHERE PROPOSED CONSTRUCTION ABUTS AN EXISTING SURFACE OR PAVEMENT FOR WHICH PARTIAL REMOVAL OF THAT SURFACE OR PAVEMENT IS REQUIRED. SAW JOINT TO FACILITATE REMOVAL WITHIN THREE (3) FEET OF EXISTING JOINTS WILL NOT BE PERMITTED AND FOR SUCH INSTANCES THE LIMITS OF REMOVAL SHALL EXTEND TO THE EXISTING JOINT. SUCH SAW CUTS WILL NOT BE PAID FOR DIRECTLY AND THIS COST SHALL BE CONSIDERED AS SUBSIDIARY TO THE REMOVAL OF SURFACE OR PAVEMENT.



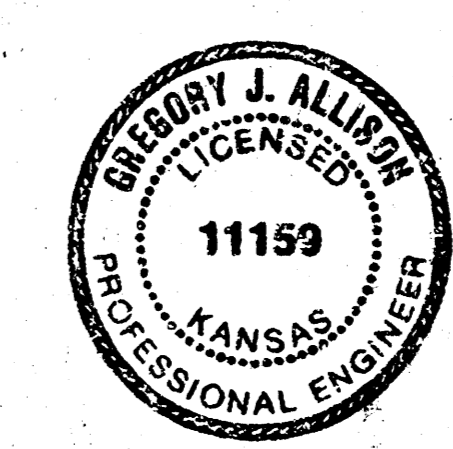
SW Cor., NW 1/4, SW 1/4
Sec. 30, T26S, R2E, 6th P.M.

INDEX TO DRAWINGS

SHEET NO.	DESCRIPTION
1	TITLE SHEET
2-4	PAVEMENT DETAILS
5	PAVING PLANS
6-7	CROSS SECTIONS
8	FINAL PLAN

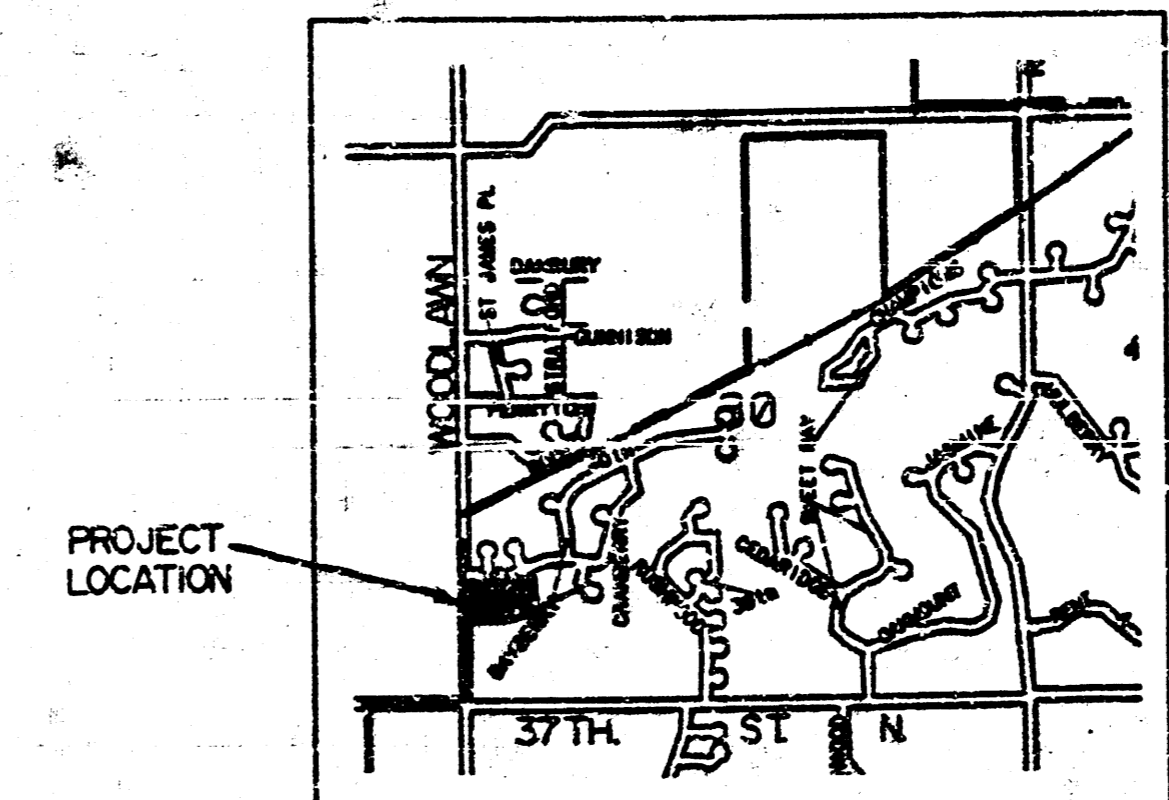


SCALE: 1" = 50'



BENCHMARK

BM #1 CUT ON N.W. CORNER OF R.C.B. ON 39TH ST. NO. AT S.E. COR. OF NORTHBROOK MEADOW.
ELEV. = 183.45 CITY DATUM

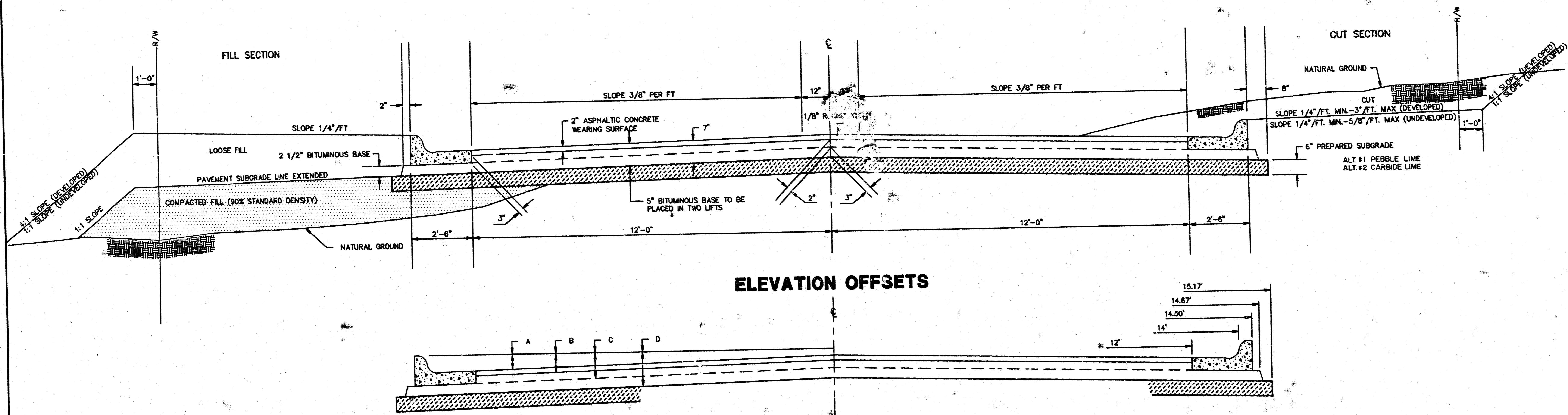


LOCATION MAP

	NORTHBROOK MEADOW 2ND ADDITION PHASE 2 PAVING PLANS	Design: G.J.A. Drawn by: K.K.L. Checked by: G.J.A. Date: 5/92 Job No.: 9029PAV1
	MID-KANSAS ENGINEERING CONSULTANTS INC. 3500 NORTH ROCK ROAD BUILDING #800 WICHITA, KANSAS 67226 (316) 636-5566	Sheet 1 of 8

TYPICAL 29' PAVEMENT DETAILS

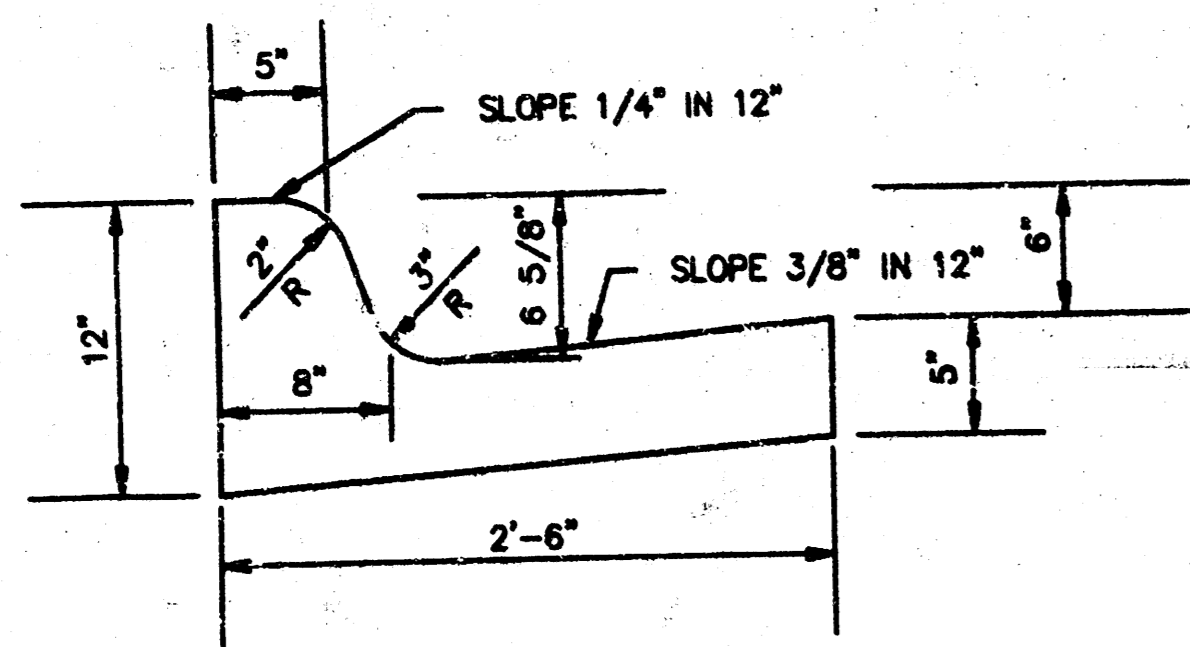
TRANSVERSE SECTION



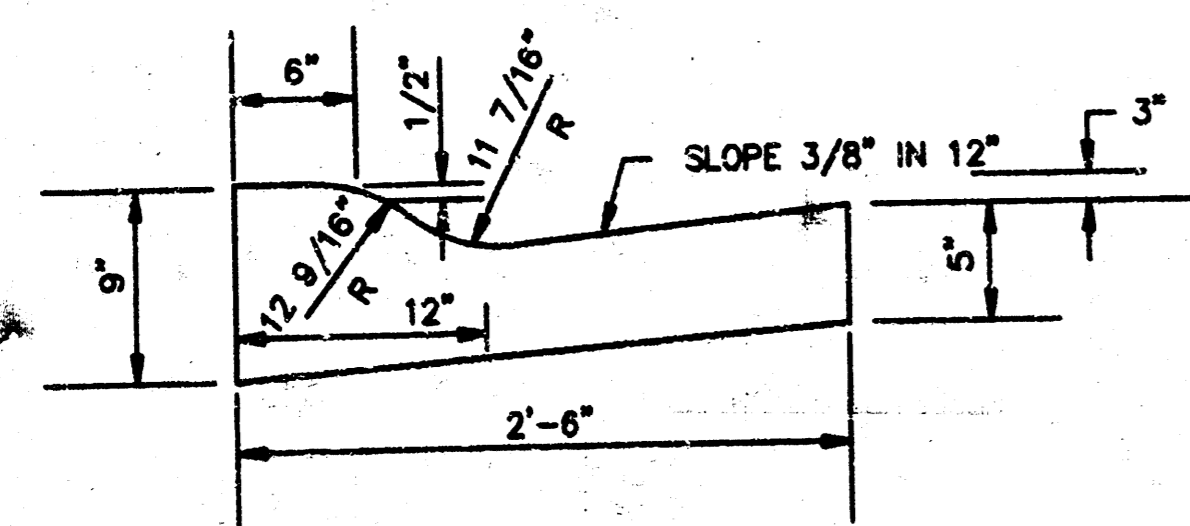
ELEVATION OFFSETS

	DISTANCE FROM CENTERLINE (LT. & RT.)											
	0'	2'	4'	6'	7'	8'	10'	12'	14'	14.5'	14.67'	15.17'
A: TOP OF CURBS TO TOP OF SURFACE LIFT	0.13	0.18	0.24	0.30	0.33	0.36	0.43	0.49	--	--	--	--
B: TOP OF CURBS TO TOP OF UPPER BASE LIFT	0.30	0.35	0.41	0.47	0.50	0.53	0.60	0.66	--	--	0.15	--
C: TOP OF CURBS TO TOP OF LOWER BASE LIFT	0.47	0.52	0.60	0.68	0.71	0.75	0.83	0.90	0.98	1.00	1.01	--
D: TOP OF CURBS TO TOP OF SUBGRADE	0.72	0.77	0.84	0.91	0.94	0.98	1.05	1.12	1.19	1.21	1.21	1.23

COMBINED CURB & GUTTER



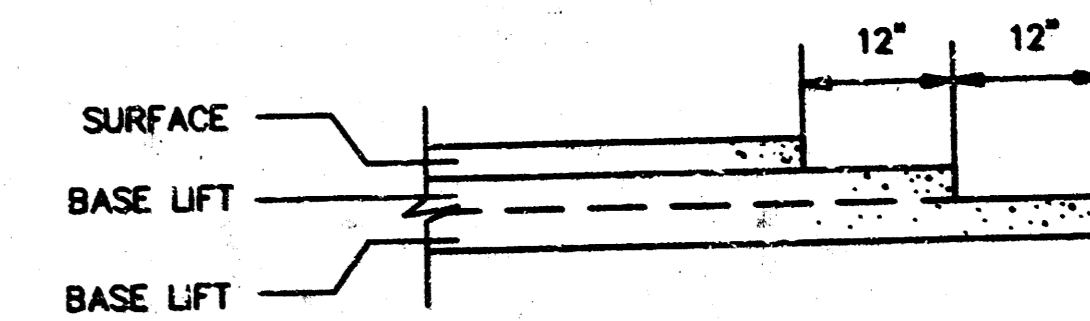
ROLL TYPE COMBINED CURB & GUTTER



GENERAL NOTES

- 1) THE ASPHALTIC CONCRETE PAVEMENT BETWEEN THE COMBINED CURB AND GUTTER SHALL BE PAID AS SQUARE YARDS OF 7" ASPHALTIC CONCRETE (5" BITUMINOUS BASE).
- 2) THE BITUMINOUS BASE UNDER AND BEHIND THE COMBINED CURB AND GUTTER SHALL BE PAID AS SQUARE YARDS OF 2 1/2" BITUMINOUS BASE.
- 3) A TACK COAT OF EMULSIFIED ASPHALT (SC-1H OR CSS-1H) SHALL BE APPLIED AT AN APPROXIMATE RATE OF 0.05 GALLONS PER SQUARE YARD BETWEEN EACH LIFT OF ASPHALTIC MATERIAL.
- 4) BITUMINOUS BASE AND ASPHALTIC CONCRETE WEARING SURFACE SHALL BE PLACED WITH A LAYDOWN MACHINE HAVING AUTOMATIC CONTROLS FOR LINE AND GRADE.
- 5) CONSTRUCTION JOINTS IN EACH LIFT SHALL BE STAGGERED A MINIMUM DISTANCE OF ONE (1) FOOT FROM JOINTS IN PRECEDING LIFTS AND PLACED SO THAT A JOINT WILL BE CONSTRUCTED ON THE CENTERLINE OF THE TOP LIFT.
- 6) CONTRACTOR TO BID ONLY ONE SUBGRADE TREATMENT ALTERNATE WHEN ALTERNATES ARE PROVIDED IN THE PROPOSAL AND CONTRACT. THE ALTERNATE CHOSEN BY THE SUCCESSFUL BIDDER SHALL BE USED IN CONSTRUCTING THIS PROJECT.

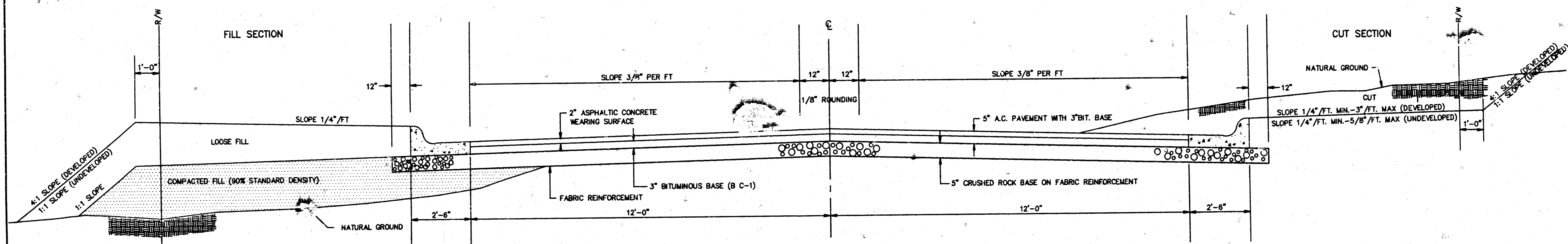
TRANSVERSE CONSTRUCTION JOINTS



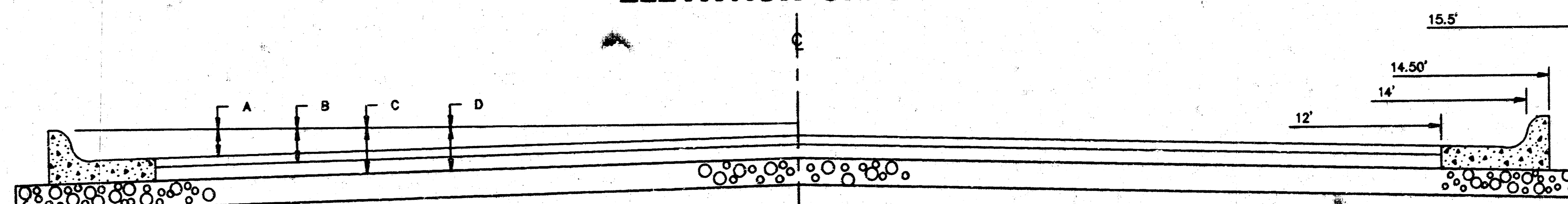
TRANSVERSE CONSTRUCTION JOINTS SHALL BE CONSTRUCTED IN FLEXIBLE BASE PAVEMENTS AT LOCATIONS WHERE PAVEMENT JOINTS EXISTING FLEXIBLE BASE PAVEMENT AS SHOWN BY THE DETAILS. ALL COSTS ASSOCIATED WITH THE CONSTRUCTION OF THE TRANSVERSE JOINT SHALL BE INCLUDED IN THE BID PRICE FOR SQUARE YARDS 7" ASPHALTIC CONCRETE (5" BITUMINOUS BASE).

TYPICAL 29' PAVEMENT DETAILS

TRANSVERSE SECTION



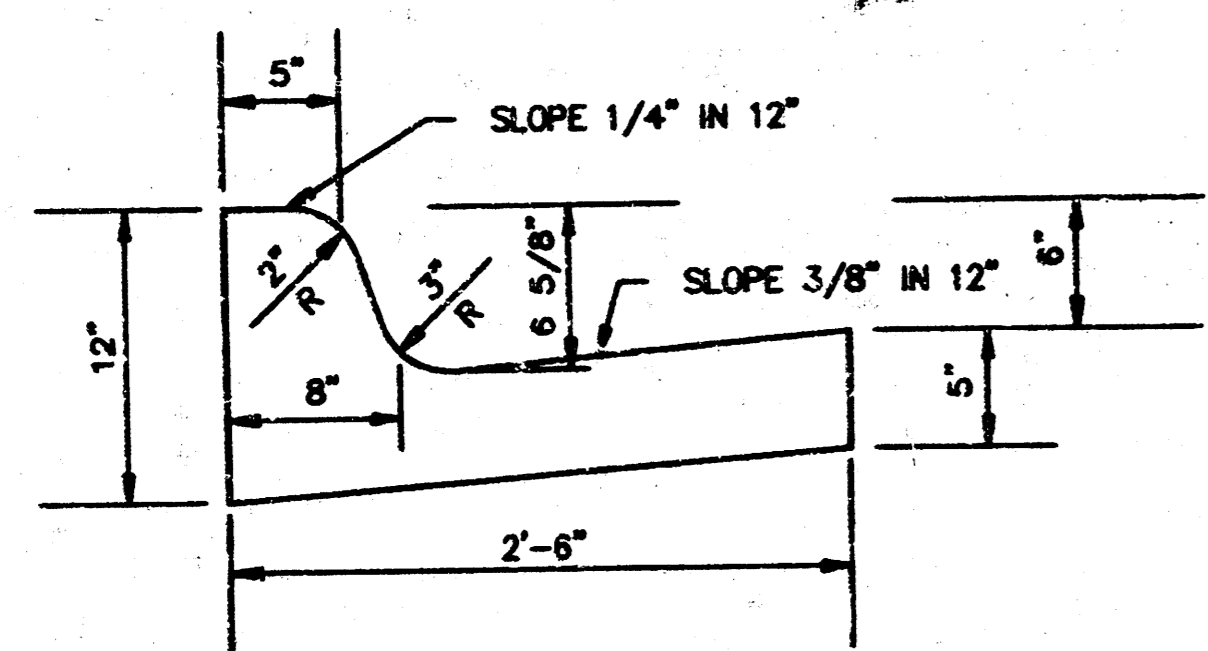
ELEVATION OFFSETS



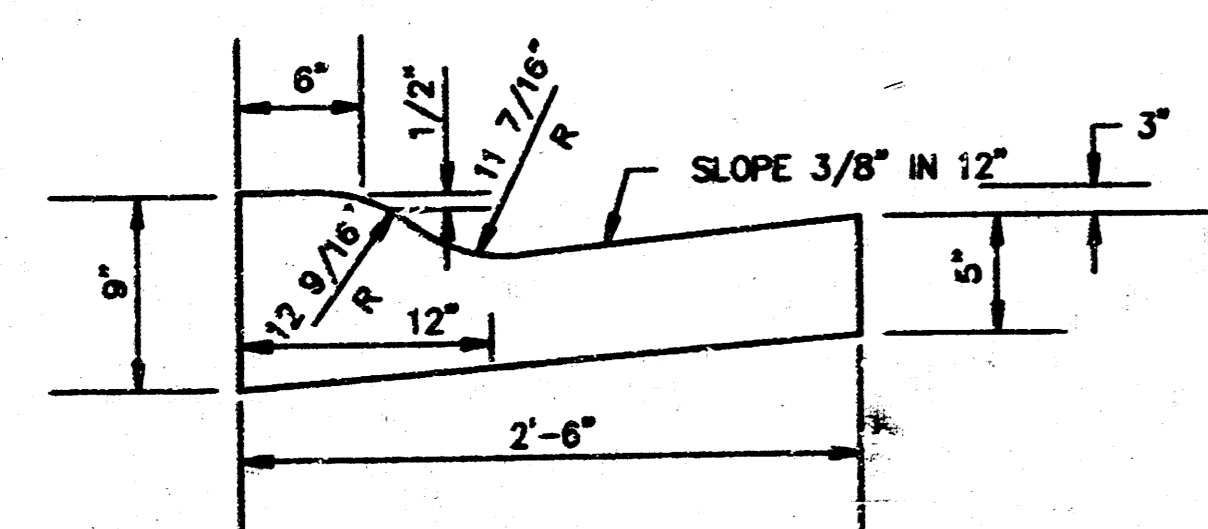
	DISTANCE FROM CENTERLINE (LT. & RT.)											
	0'	2'	4'	6'	7'	8'	10'	12'	14'	14.5'		
A: TOP OF CURBS TO TOP OF SURFACE LIFT	0.13	0.18	0.24	0.30	0.33	0.36	0.43	0.49	---	---	---	---
B: TOP OF CURBS TO TOP OF UPPER BASE LIFT	0.30	0.35	0.41	0.47	0.50	0.53	0.60	0.66	---	---	---	---
C: TOP OF CURBS TO TOP OF LOWER BASE LIFT	0.47	0.52	0.60	0.68	0.71	0.75	0.83	0.90	0.98	1.05		
D: TOP OF CURBS TO TOP OF SUBGRADE												

FABRIC BASE REINFORCEMENT SHALL BE 8x1100 GEOGRID AS MANUFACTURED BY TENSAR CORPORATION OR APPROVED EQUAL. FABRIC BASE REINFORCEMENT SHALL BE INSTALLED IN ACCORDANCE WITH MANUFACTURER'S RECOMMENDATIONS. CRUSHED ROCK SHALL BE UNIFORMLY GRADED FROM 1-1/2" MAXIMUM SIZE TO NOT MORE THAN 10% PASSING A No. 200 SEVE. ROCK QUALITY SHALL BE THE SAME AS SPECIFIED FOR COARSE AGGREGATE FOR CONCRETE MIXES.

COMBINED CURB & GUTTER



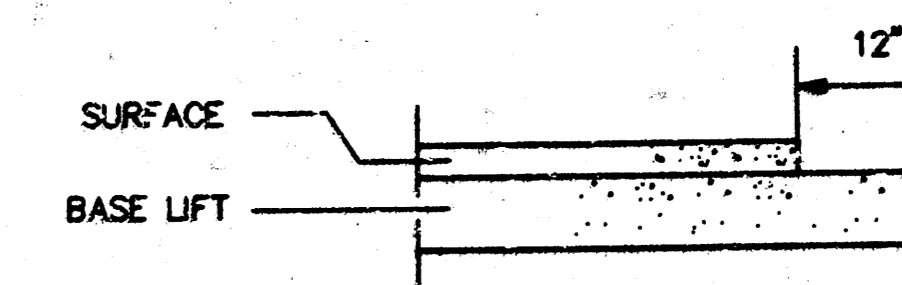
ROLL TYPE COMBINED CURB & GUTTER



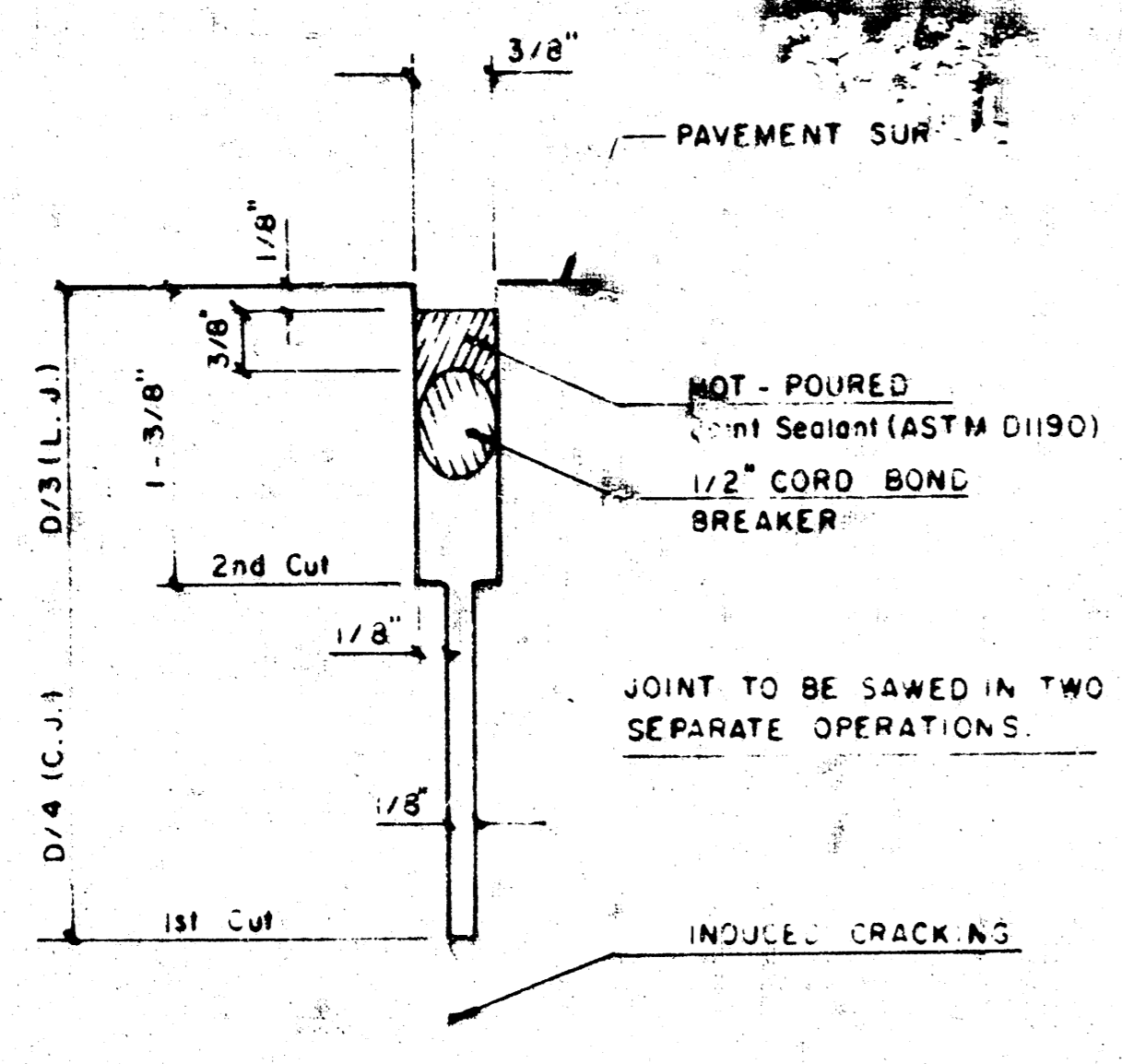
GENERAL NOTES

- ROCK BASE IS TO BE COMPACTED AND SMOOTHED WITH A STEEL FACED ROLLER PRIOR TO PLACEMENT OF ASPHALT. TACK COAT WILL NOT BE APPLIED TO ROCK BASE.
- A TACK COAT OF EMULSIFIED ASPHALT (SC-1H OR CSS-1H) SHALL BE APPLIED AT AN APPROXIMATE RATE OF 0.05 GALLONS PER SQUARE YARD BETWEEN EACH LIFT OF ASPHALTIC MATERIAL.
- BITUMINOUS BASE AND ASPHALTIC CONCRETE WEARING SURFACE SHALL BE PLACED WITH A LAYDOWN MACHINE HAVING AUTOMATIC CONTROLS FOR LINE AND GRADE.
- CONSTRUCTION JOINTS IN EACH LIFT SHALL BE STAGGERED A MINIMUM DISTANCE OF ONE (1) FOOT FROM JOINTS IN PRECEDING LIFTS AND PLACED SO THAT A JOINT WILL BE CONSTRUCTED ON THE CENTERLINE OF THE TOP LIFT.

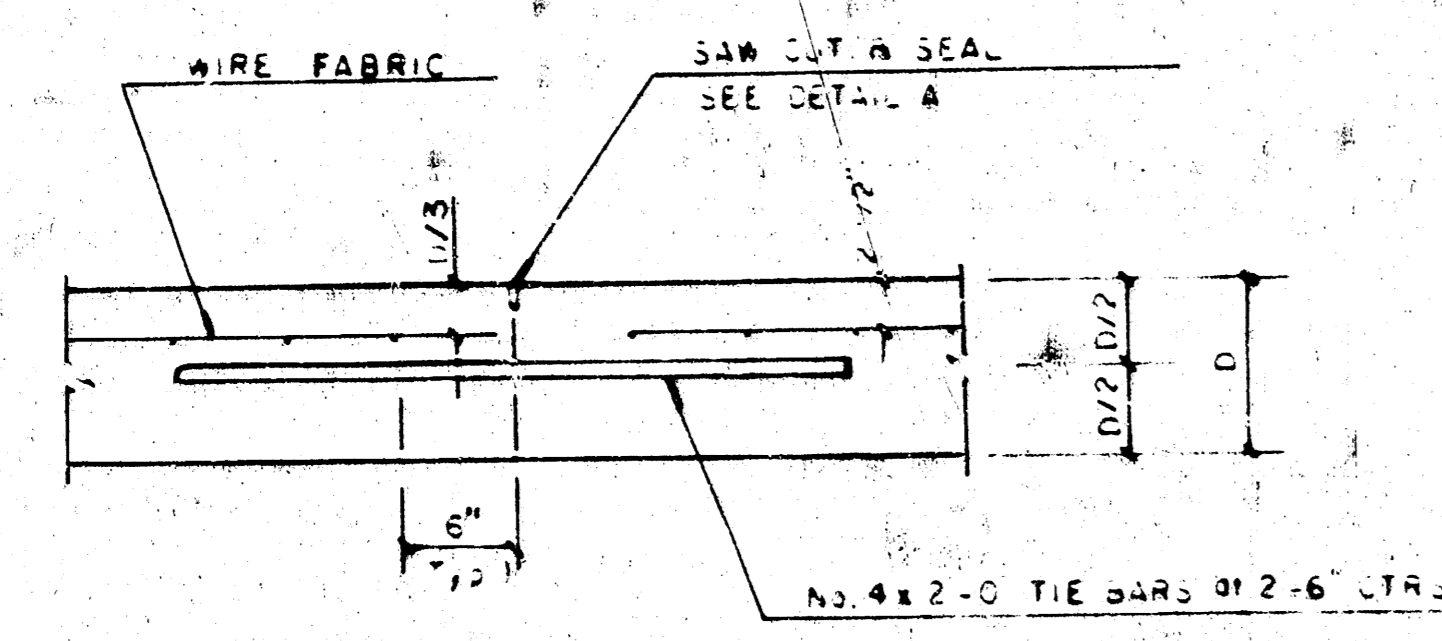
TRANSVERSE CONSTRUCTION JOINTS



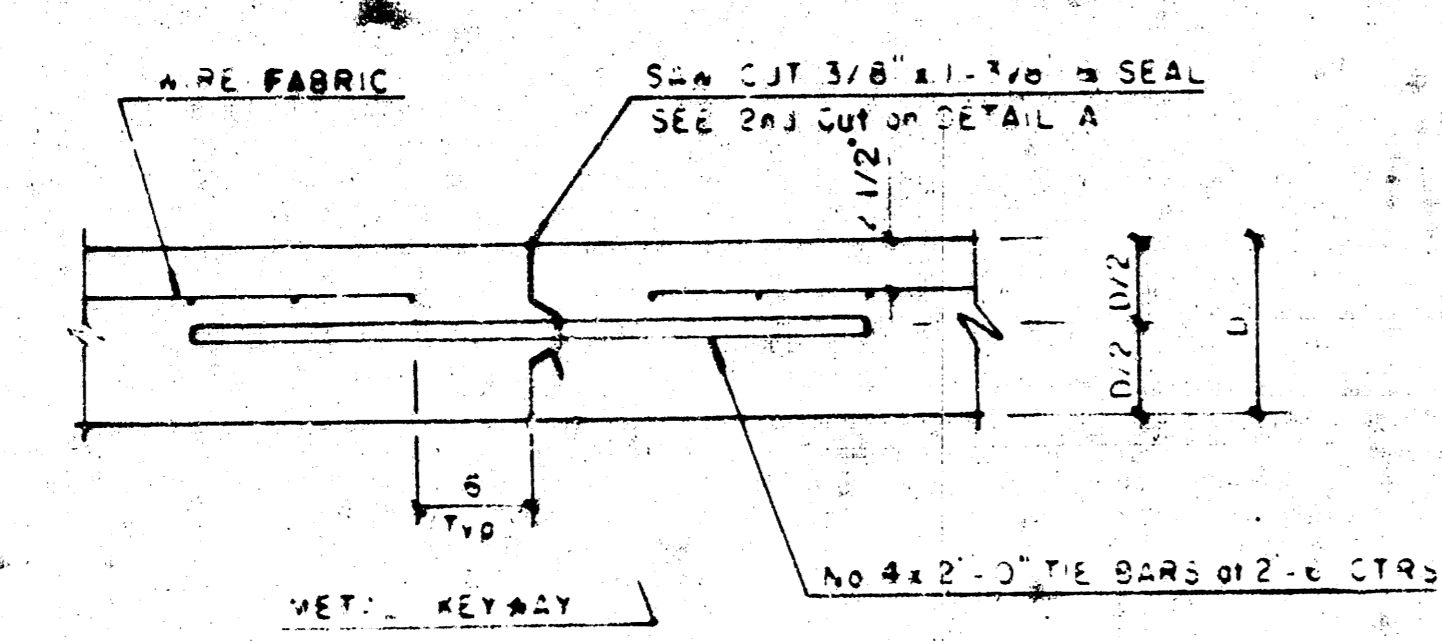
TRANSVERSE CONSTRUCTION JOINTS SHALL BE CONSTRUCTED IN FLEXIBLE BASE PAVEMENTS AT LOCATIONS WHERE PAVEMENT JOINS EXISTING FLEXIBLE BASE PAVEMENT AS SHOWN BY THE DETAILS. ALL COSTS ASSOCIATED WITH THE CONSTRUCTION OF THE TRANSVERSE JOINT SHALL BE INCLUDED IN THE BID PRICE FOR SQUARE YARDS 2\"/>



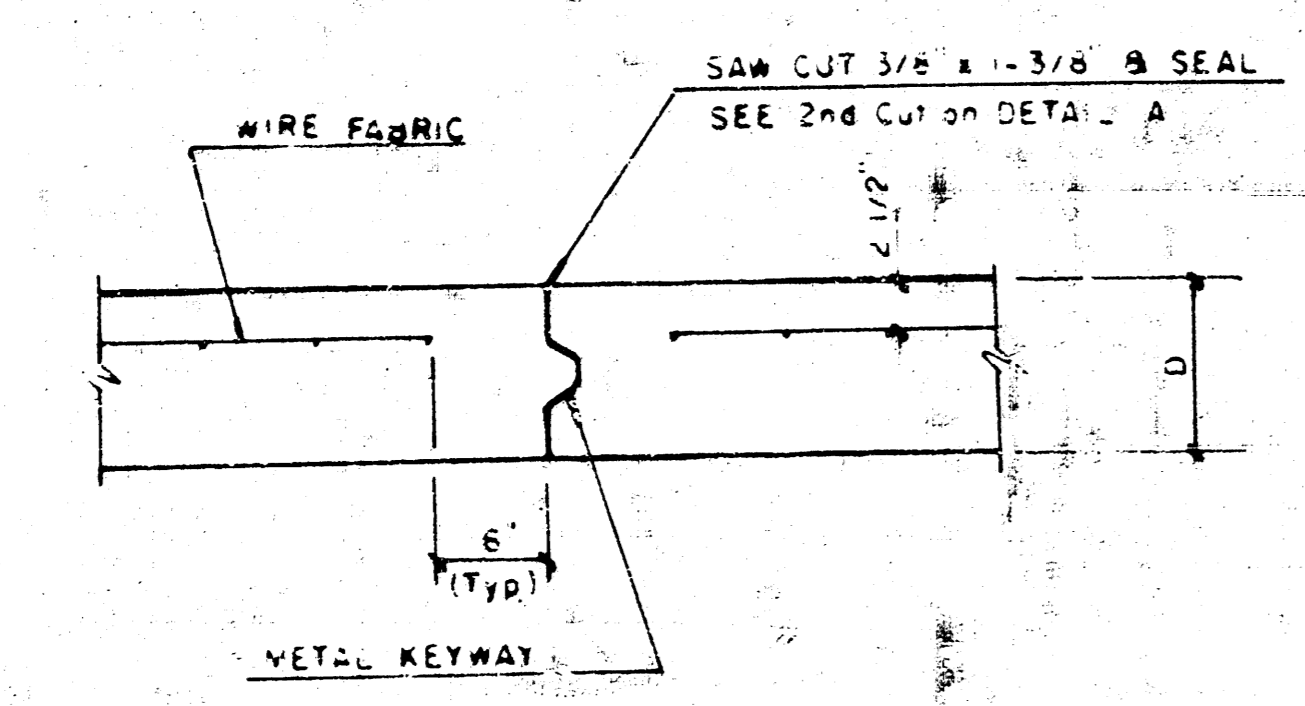
DETAIL A



LONGITUDINAL JOINT DETAIL (L.J.)

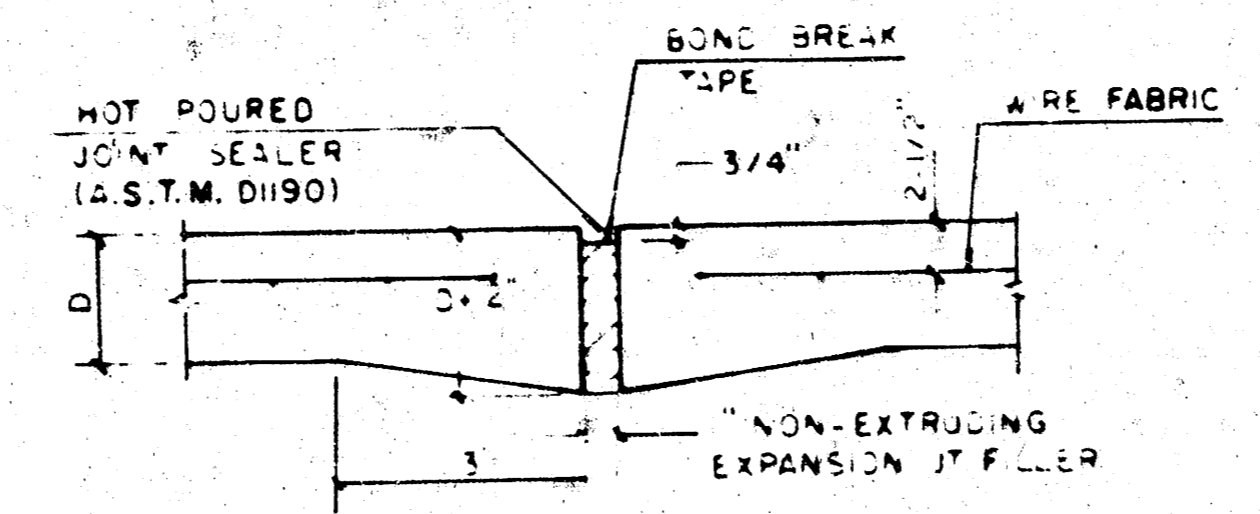


OPTIONAL LONGITUDINAL CONSTRUCTION JOINT (L.J.) (Alternate L.J.)

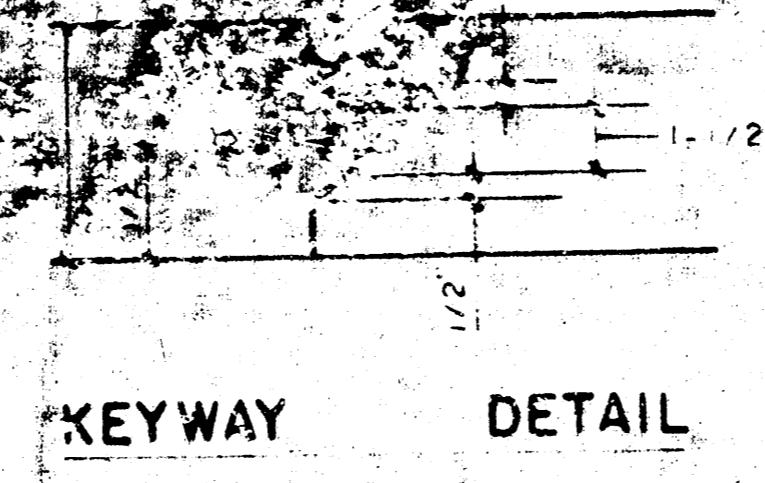


OPTIONAL CONTRACTION CONSTRUCTION JOINT (C.J.) (Alternate C.J.)

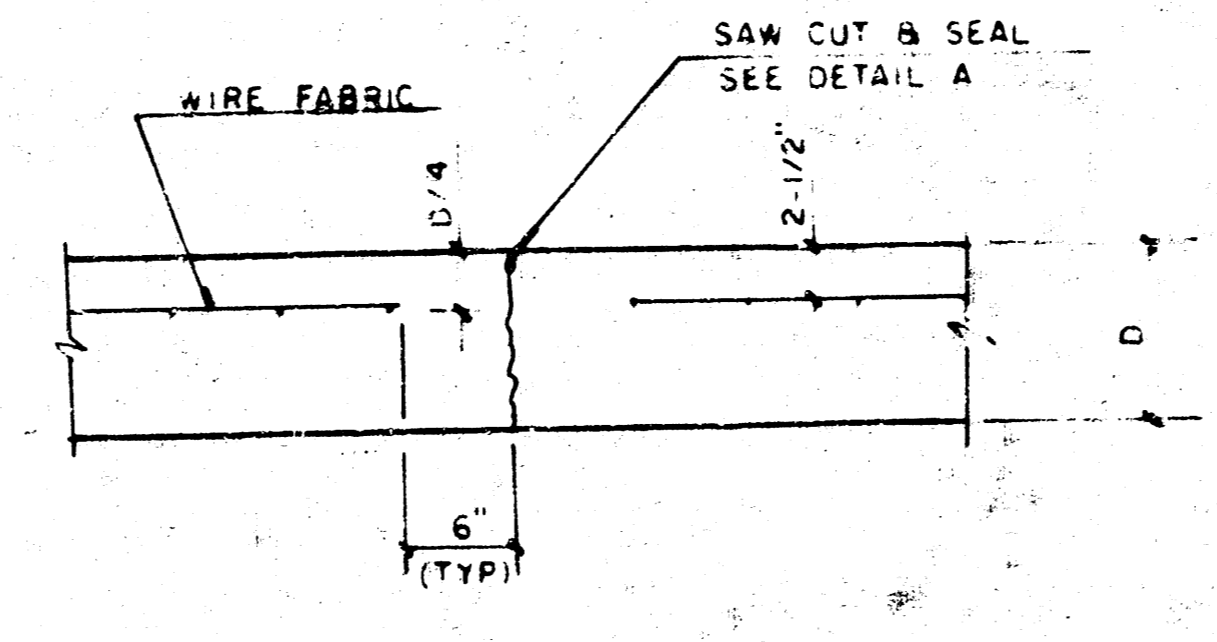
NOTE: ALL CONCRETE VALLEY GUTTER REINFORCEMENT SHALL BE ADEQUATELY SUPPORTED BY BAR CHAIRS IN THE REQUIRED POSITION UNLESS APPROVED OTHERWISE BY THE ENGINEER



EXPANSION JOINT
NOTE EXTRA THICKNESS TO BE SUBSIDIARY PRICE OF 50 YDS PAVEMENT

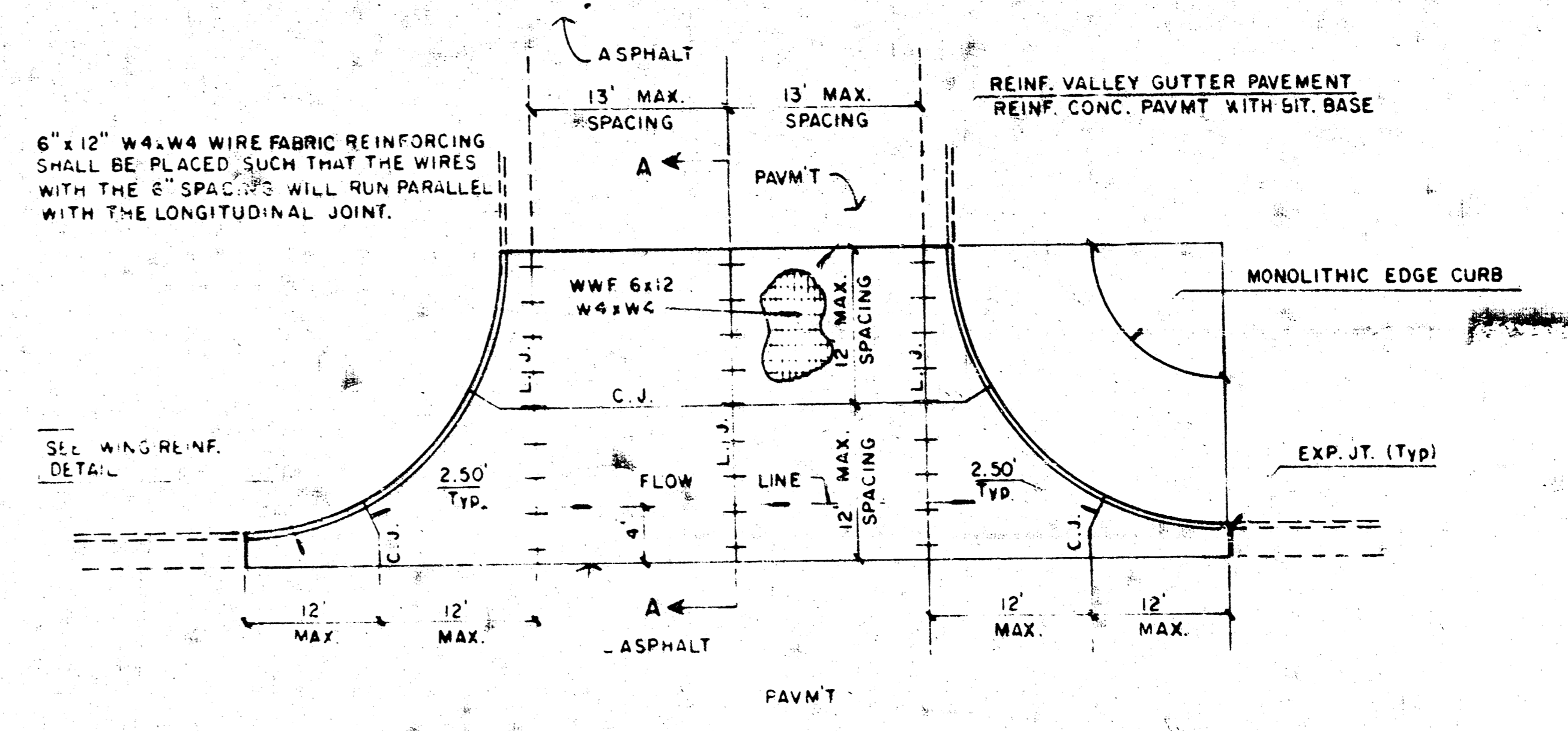


KEYWAY DETAIL

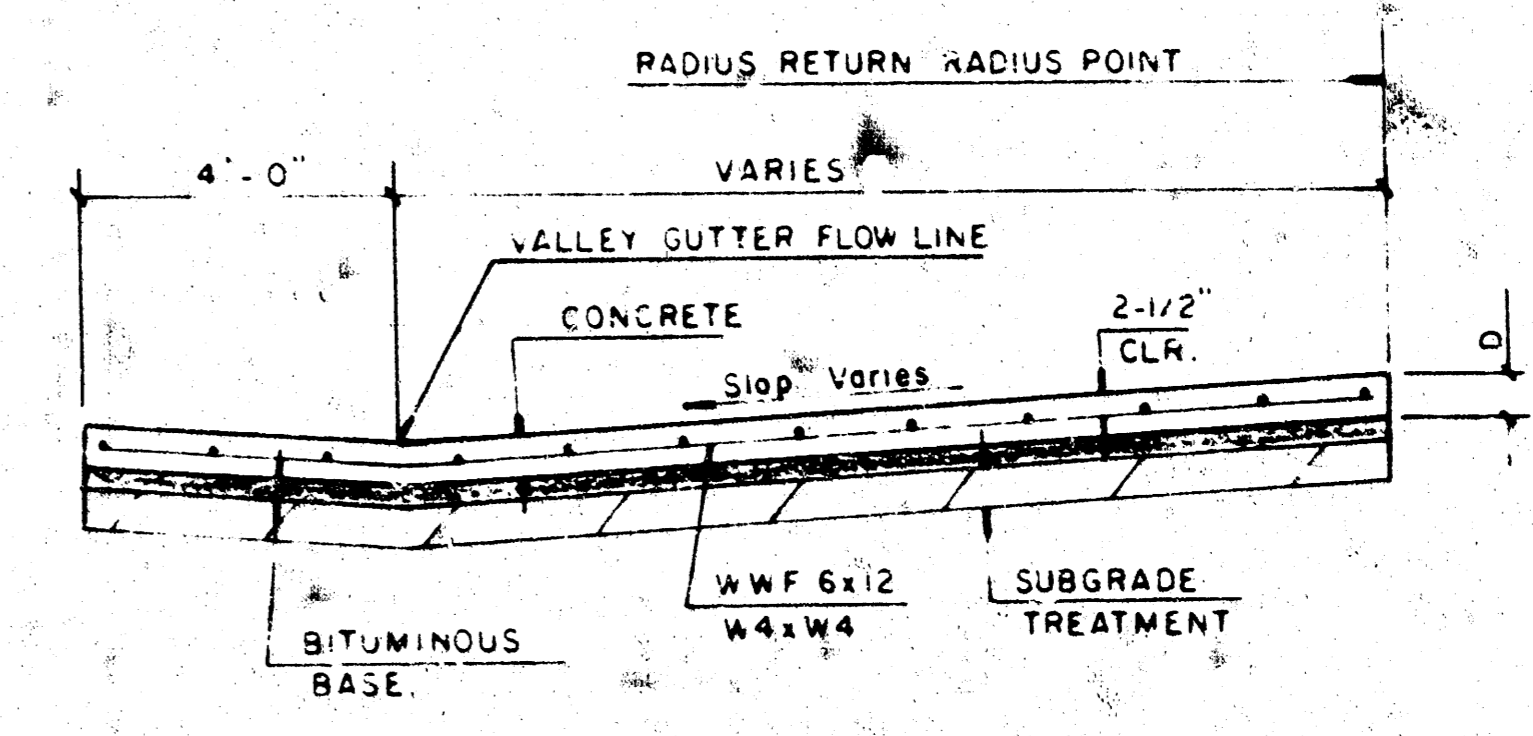


CONTRACTION JOINT DETAIL (C.J.)

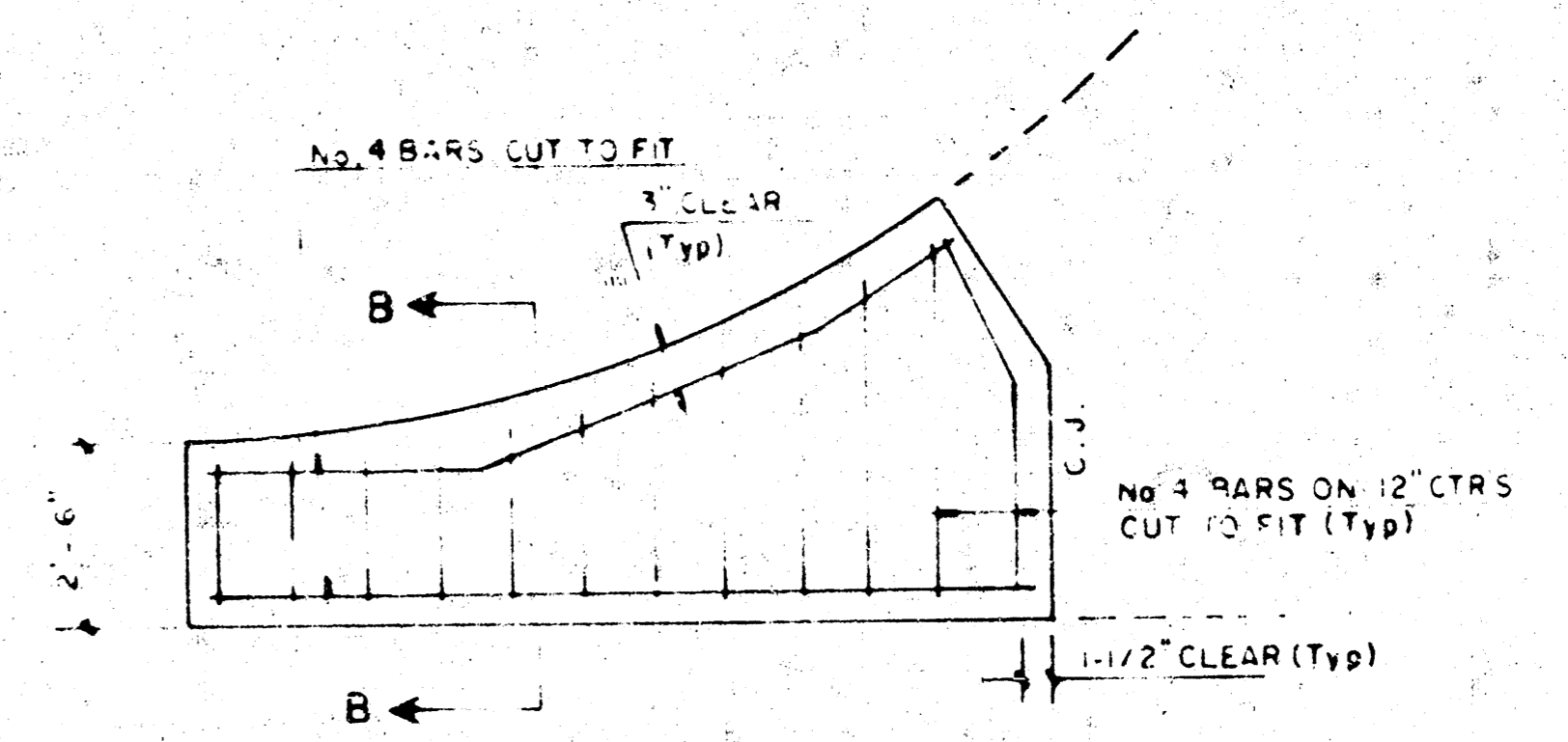
LEGEND
C.J. IDENTIFIES CONTRACTION JOINT
L.J. IDENTIFIES LONGITUDINAL JOINT



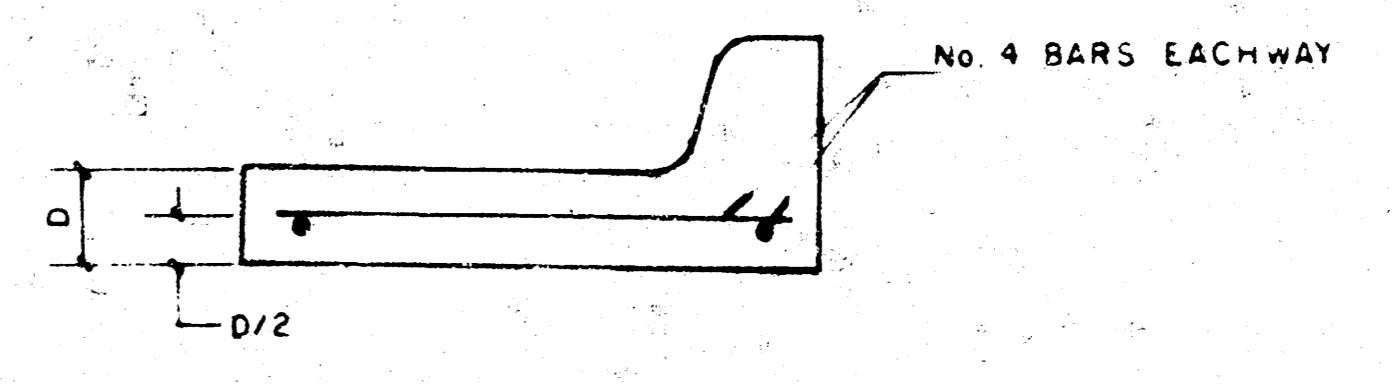
PLAN REINFORCED VALLEY GUTTER



SECTION A-A

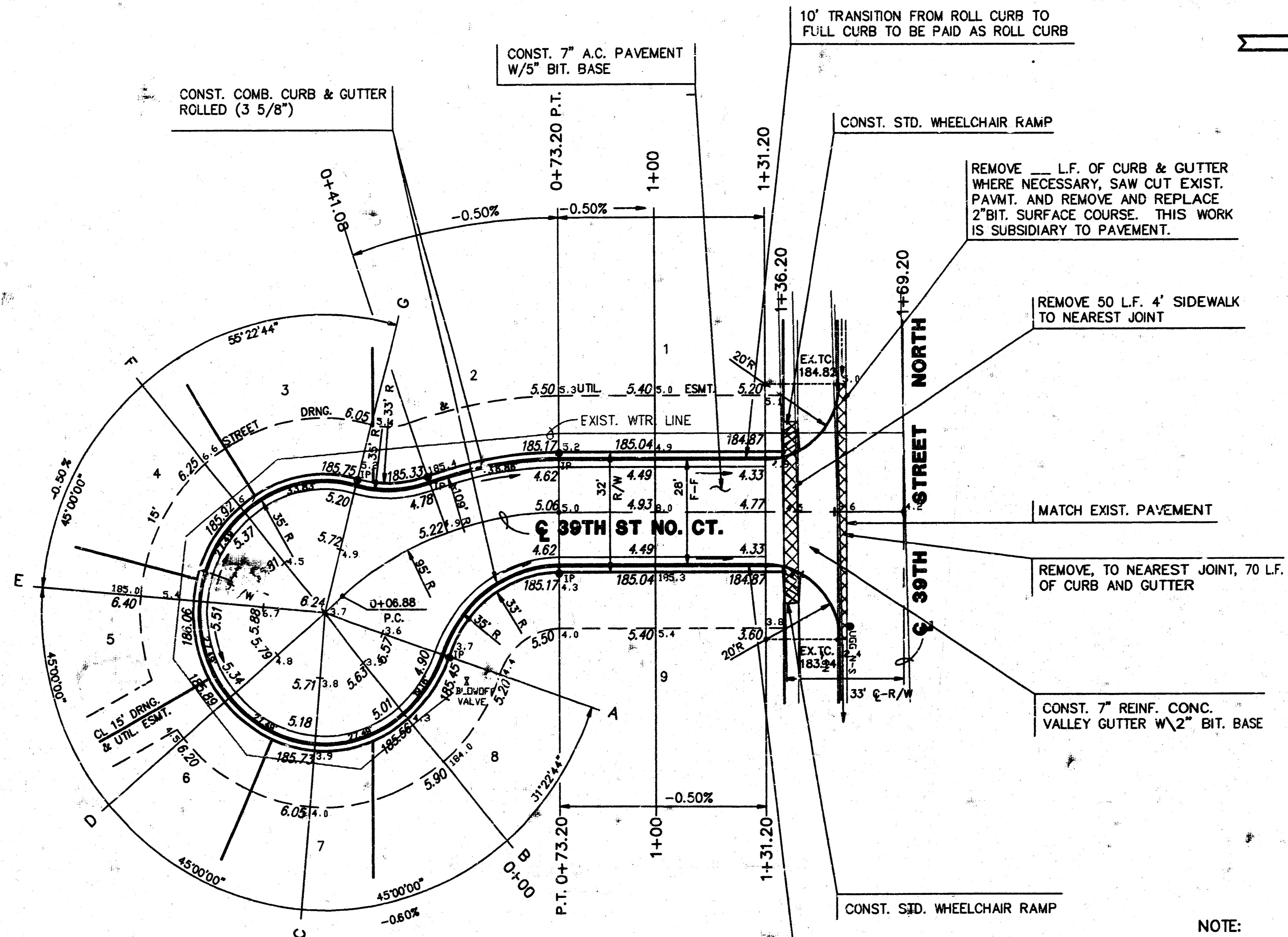
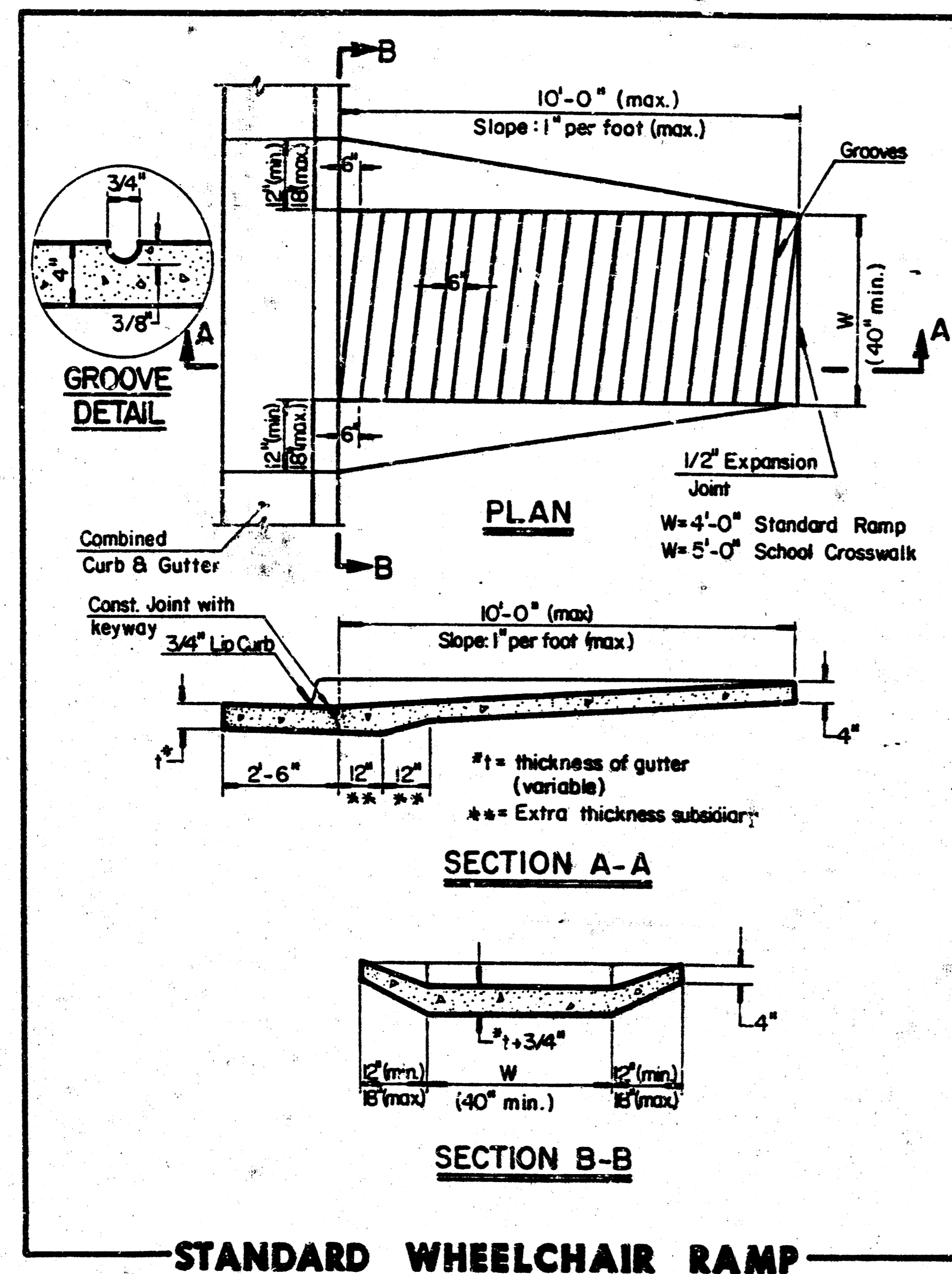


WING REINFORCING DETAIL



SECTION B-B

PROJECT DESCRIPTION
VALLEY GUTTER DETAILS
PROJECT NUMBER



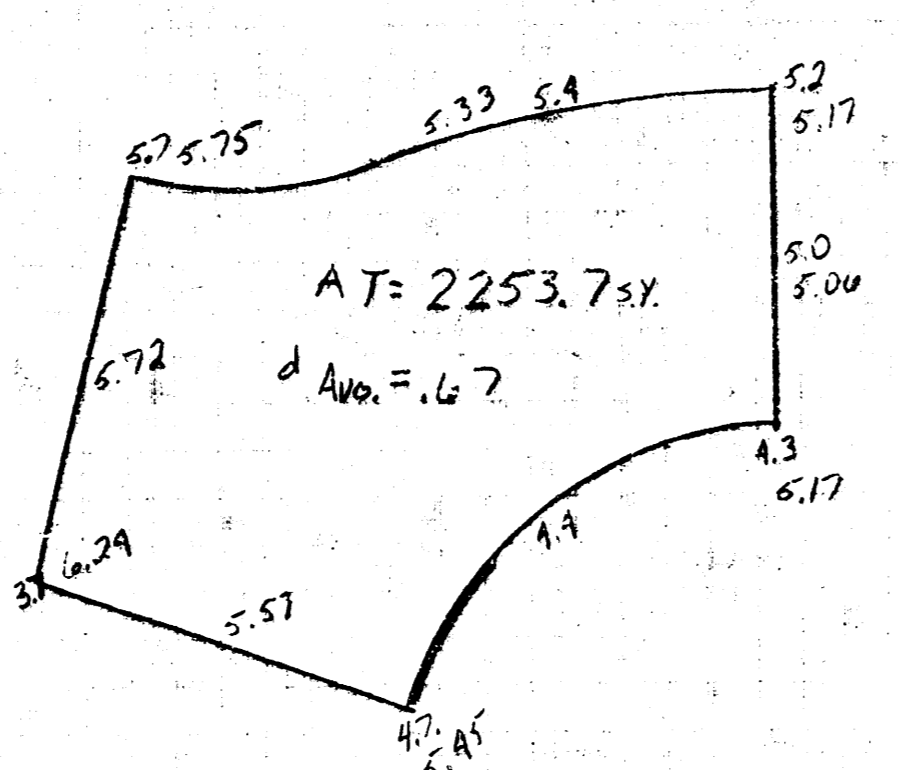
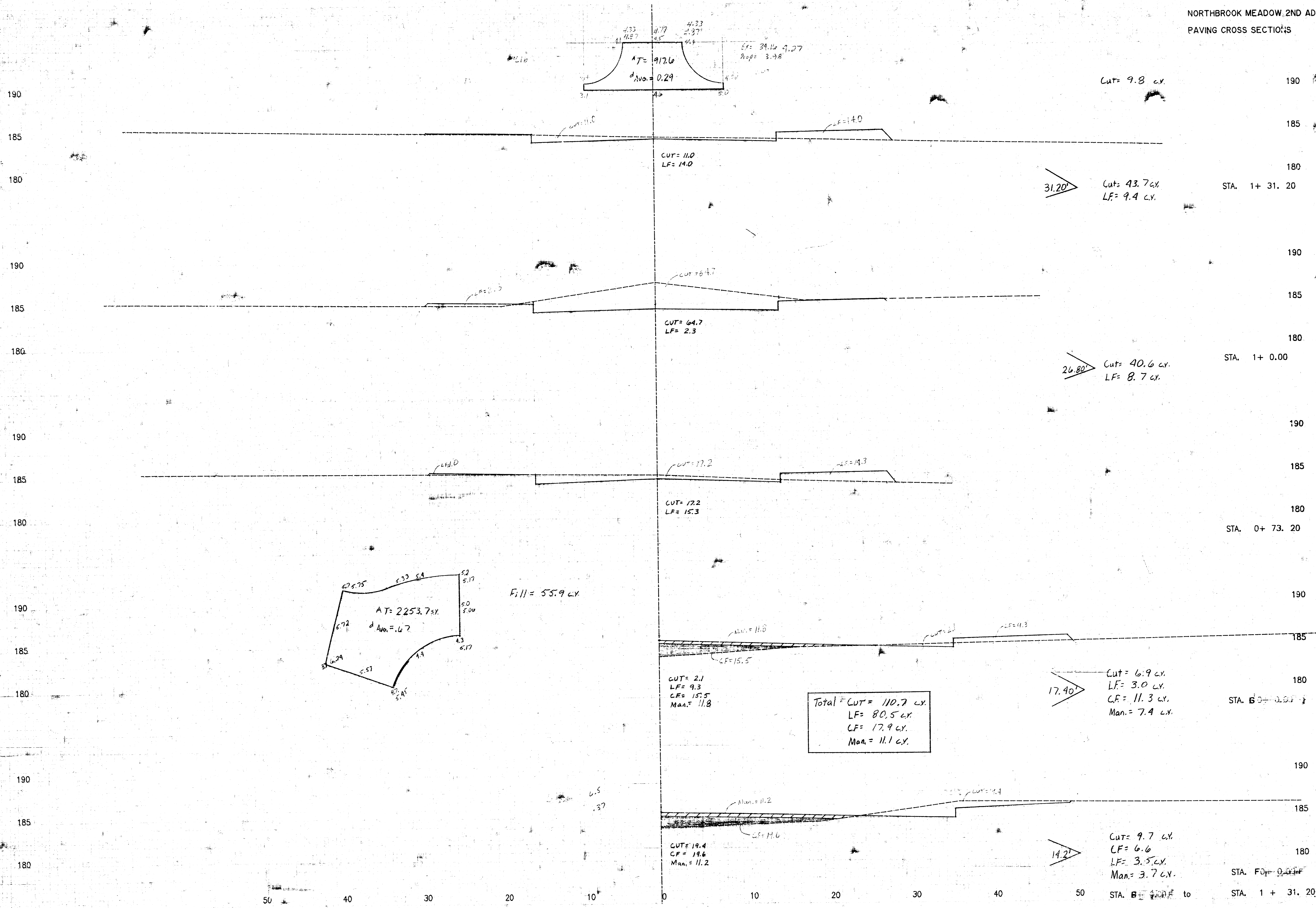
$\Delta = 40'00''00''$ $R = 95.00'$ $T = 34.58'$ $L = 66.32'$ $LC = 64.98'$
 CURVE DATA BASED ON CENTERLINE $\Delta/2 = 20'00''00''$

STATION	ARC	CHORD LENGTH		DEFLECTION	TOTAL DEFLECTION
		8' OFF LTCB	8' OFF RTCB		
0+06.88	-	-	-	00'00''00"	00'00''00"
0+41.08	34.20'	-	-	10'18''48"	10'18''48"
0+73.20	32.12'	39.37'	-	09'41''12"	20'00''00"
DEF/FT = 18.09341 MIN.					



	CITY OF WICHITA	Design: GJA
	NORTHBROOK MEADOW 2ND ADDITION	Drawn by: KKL & WNU
	PROJ. NO. 472-82067	Checked by: GJA
MID-KANSAS ENGINEERING CONSULTANTS, INC. 3600 N. ROCK ROAD #900 WICHITA, KANSAS 67226		Date: 3/9/92 Job no: 9029PAV3 Sheet: 5 of 8

NORTHBROOK MEADOW 2ND ADD.
PAVING CROSS SECTIONS

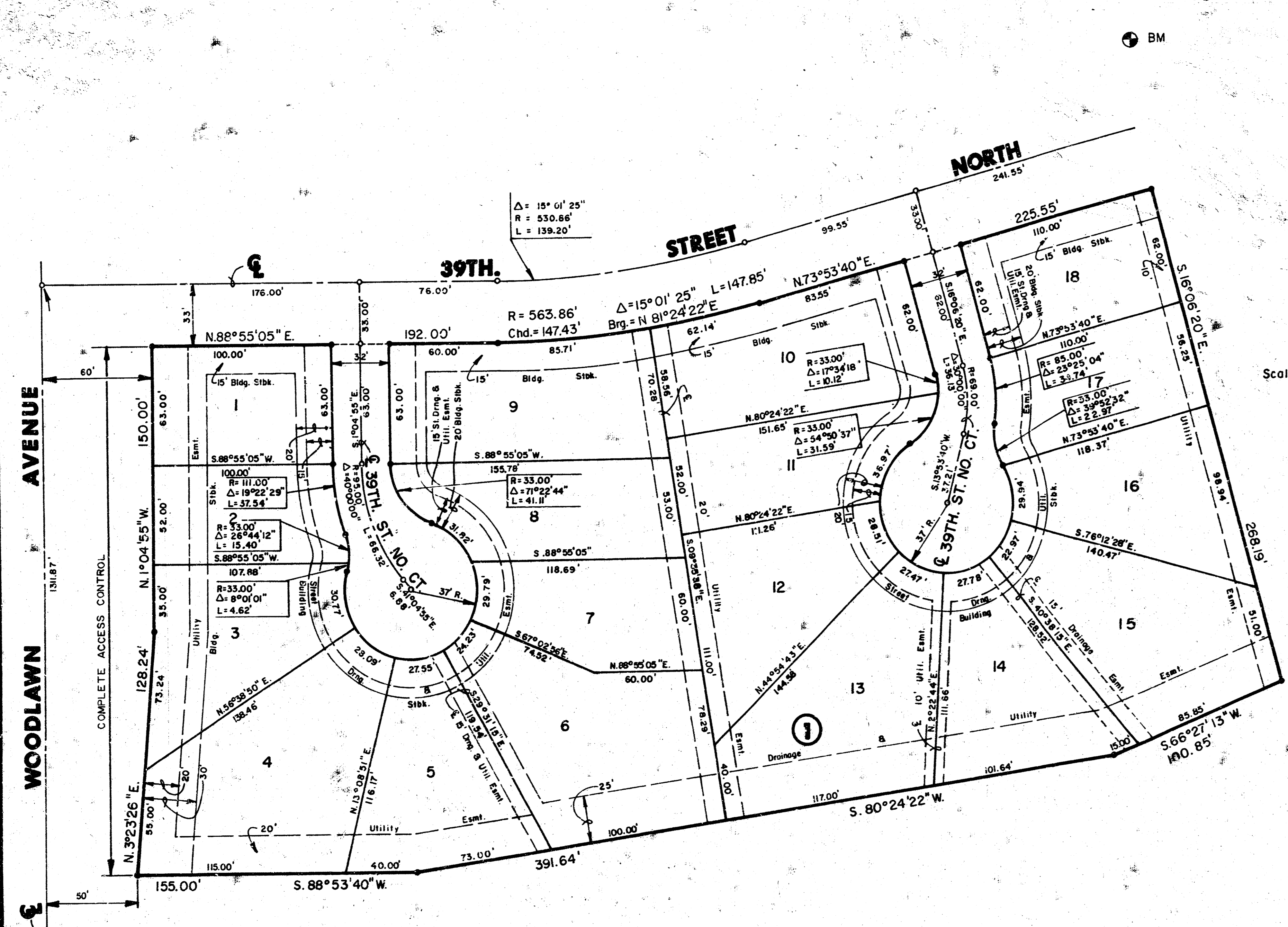


Fill = 55.9 cy

Total CUT = 110.7 cy
LF = 80.5 cy
CF = 17.9 cy
Man = 11.1 cy

FINAL PLAT OF NORTHBROOK MEADOW 2ND. ADDITION

AN ADDITION TO WICHITA, SEDGWICK COUNTY, KANSAS



S.W. Cor., N.W. 1/4, S.W. 1/4
Sec. 30, T 26 S., R 2 E., 6th PM.

MIN. PAD ELEVATIONS (Minimum Opening)
 LOTS 13, 14, 15, BLOCK 1 - (180.6 CITY DATUM)
 (1368.0 MSL)
 LOT 16, BLOCK 1 - (181.0 CITY DATUM)
 (1368.4 MSL)
 LOTS 17 & 18, BLOCK 1 (181.6 CITY DATUM)
 (1369.0 MSL)

BENCH MARK
 "□" CUT ON N.W. COR. OF R.C.B. ON 39TH ST. NO.
 AT S.E. COR. OF NORTHBROOK MEADOW
 ELEV. = 163.45 CITY DATUM

I, Kenneth H. Bengtson, a Civil Engineer and Land Surveyor in Kansas, do hereby certify that I have been in responsible charge of surveying and platting of "NORTHBROOK MEADOW 2ND ADDITION" an addition to Wichita, Sedgwick County, Kansas, and that the same has been divided into lots, a block, and streets, the same being accurately set forth in the accompanying plat and described herein:

A replat of Lot 62, Block 1, NORTHBROOK ADDITION, an addition to Wichita, Sedgwick County, Kansas.

All lots, blocks, streets, easements and building setbacks located within the above described property are being vacated and replatted by virtue of K.S.A. 12-512(b).

I hereby certify that the details of this plat are correct to the best of my knowledge and belief this _____ day of _____, 1990.

Kenneth H. Bengtson, P.E., K.L.S. #922
 Mid-Kansas Engineering Consultants, P.A.
 3500 N. Rock Road, Building #800
 Wichita, KS 67226

Know all men by these present that we the undersigned property owners of the land as above set forth in the Civil Engineers and Land Surveyors Certificate have caused the same to be surveyed and platted into lots, a block and streets the same to be known as NORTHBROOK MEADOW 2ND ADDITION, an addition to Wichita, Sedgwick County, Kansas. The streets are hereby dedicated to and for the use of the public. Easements for construction and maintenance of public utilities, drainage, and streets are hereby granted. All abutting rights of access over and across the west line of Lots 1 through 4 inclusive, Block 1 are hereby granted to the City of Wichita. Minimum pad elevations are as indicated on the face of the plat.

PORTER AND PLUMER HOMES
 a Kansas General Partnership
 J.M. Porter Enterprises, Inc., Partner
 Plumer Construction, Inc., Partner

By: Mario E. Porter, President
 By: Keith E. Plumer, President
 Being all the partners of said partnership

STATE OF KANSAS
 SEDGWICK COUNTY

Be it remembered that on this _____ day of _____, 1990, before me a Notary Public in and for said State and County, came Keith E. Plumer, President of Plumer Construction, Inc., Partner, and Mario E. Porter, President of J. M. Porter Enterprises, Inc., Partner, being all of the partners of Porter and Plumer Homes, a partnership, on behalf of the partnership and on behalf of the corporations, to me personally known to be the same person who executed the foregoing instrument of writing and duly acknowledged the execution of the same. In testimony whereof, I have hereunto set my hand and affixed my notarial seal the day and year above written.

_____, Notary Public

My Appointment Expires: _____

This plat of "NORTHBROOK MEADOW 2ND ADDITION" has been submitted to and approved by the Wichita-Sedgwick County Metropolitan Area Planning Commission, Wichita, Kansas.

Dated this 21st day of June, 1990.

WICHITA-SEDGWICK COUNTY METROPOLITAN AREA PLANNING COMMISSION

George D. Sierman, Acting Chairman

Marvin S. Krout, Secretary

This plat approved and all dedications shown hereon, if any, accepted by the City Council of the City of Wichita, Kansas, this _____ day of _____, 1990.

Bob Knight, Mayor

Pat Burnett, Deputy City Clerk

Entered on transfer record this _____ day of _____, 1990.

Don Wright, County Clerk

STATE OF KANSAS)
 SEDGWICK COUNTY) SS:

This is to certify that this instrument was filed for record in the Register of Deeds office this _____ day of _____, 1990.

Pat Kettler, Register of Deeds

Ed Resa, Deputy

I, William L. Oliver, Jr., mortgagee on the above described property, do hereby consent to the plat of "NORTHBROOK MEADOW 2ND ADDITION".

William L. Oliver, Jr.,

STATE OF KANSAS)
 SEDGWICK COUNTY) SS:

Be it remembered that on this _____ day of _____, 1990, before me a Notary Public in and for said State and County, came William L. Oliver, Jr., to me personally known to be the same person who executed the foregoing instrument of writing and duly acknowledged the execution of the same. In testimony whereof, I have hereunto set my hand and affixed my notarial seal the day and year above written.

_____, Notary Public

My Appointment Expires: _____