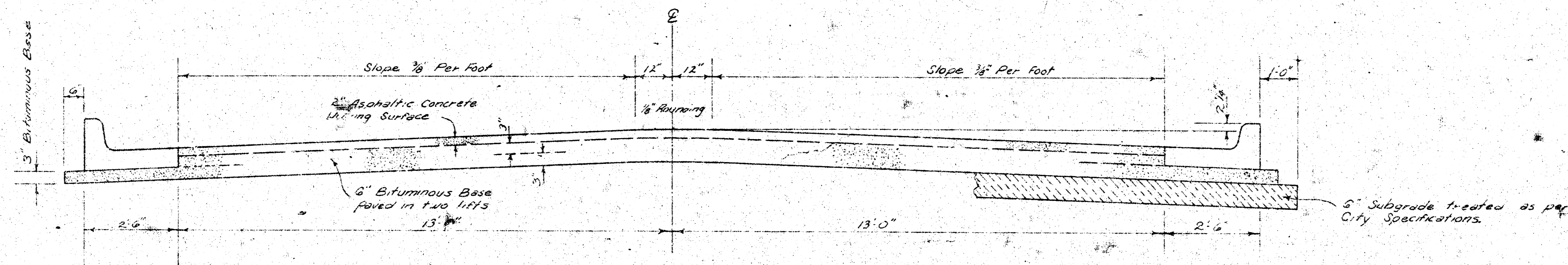


43RD STREET SOUTH

E.L. ELIZABETH TO E.L. DODGE
472 76 245 80398 000 000 001



TYPICAL SECTION

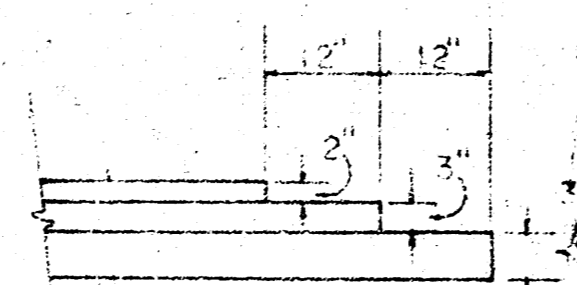
3' ASPHALTIC CONCRETE PAVEMENT WITH BITUMINOUS BASE

The A.C. pavement between the Comb. Curb & gutter shall be paid as 3\"/>

A TACK COAT OF EMULSIFIED ASPHALT (SS-1H) SHALL BE APPLIED AT AN APPROXIMATE RATE OF 0.05 GALLONS PER SQ. YD. BETWEEN LIFTS OF ASPHALTIC MATERIALS WHEN ORDERED BY THE ENGINEER. TACK COAT WILL NOT BE PAID FOR DIRECTLY AND SHALL BE CONSIDERED AS SUBSIDIARY TO PRICE BID FOR ASPHALTIC PAVEMENT.

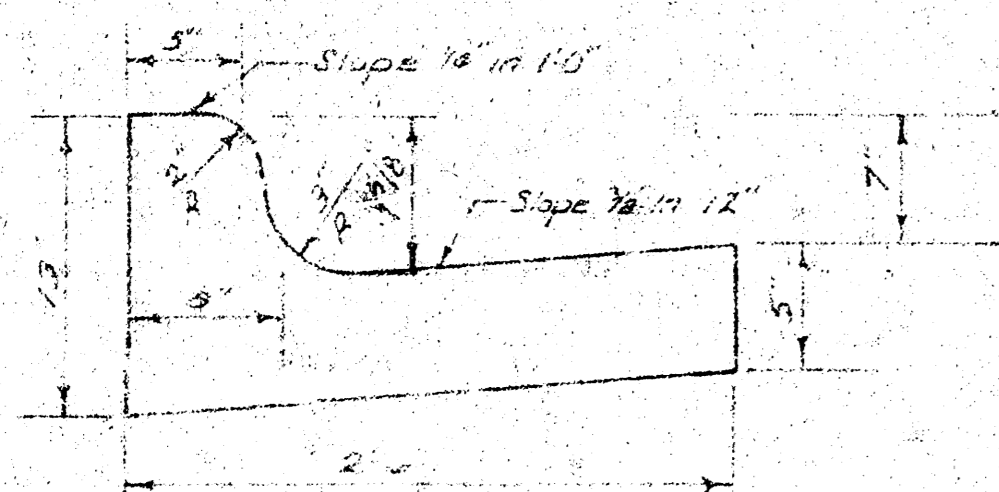
BITUMINOUS BASE AND ASPHALTIC CONCRETE WEARING SURFACE SHALL BE PLACED WITH A LAYDOWN MACHINE HAVING AUTOMATIC CONTROLS FOR CROWN AND GRADE. CONSTRUCTION JOINTS IN EACH LIFT SHALL BE STAGGERED A MINIMUM DISTANCE OF 1' WITH JOINTS IN PRECEDING LIFTS AND SUCH THAT A JOINT WILL BE CONSTRUCTED ON THE PAVEMENT CENTERLINE IN THE TOP LIFT.

DETAIL OF TRANSVERSE CONSTRUCTION JOINTS

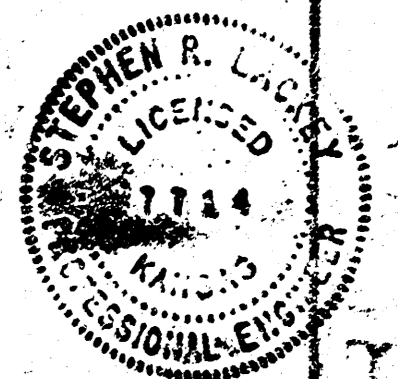
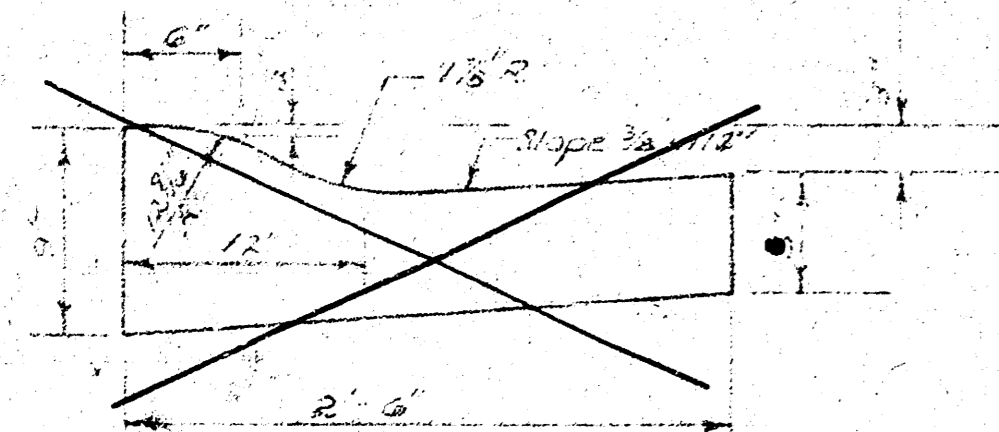


TRANSVERSE CONSTRUCTION JOINTS SHALL BE CONSTRUCTED IN FLEXIBLE BASE PAVEMENTS AT LOCATIONS WHERE PAVEMENT TEMPORARILY ENDS TO FACILITATE FUTURE PAVEMENT CONSTRUCTION AS SHOWN BY DETAIL. THE COST OF CONSTRUCTING THE TRANSVERSE CONSTRUCTION JOINTS SHALL NOT BE MEASURED OR PAID FOR DIRECTLY BUT SHALL BE INCLUDED IN THE BID PRICE FOR SQUARE YARDS OF ASPHALTIC CONCRETE PAVEMENT.

COMBINED CURB & GUTTER



REG. TYPE CURB & GUTTER



CITY OF WICHITA, KANSAS

DEPARTMENT OF PUBLIC WORKS — ENGINEERING

DEAN SELLERS Acting CITY ENGINEER

DATE: _____ PROJ. NO. **DAKS 576037**

(1/3)

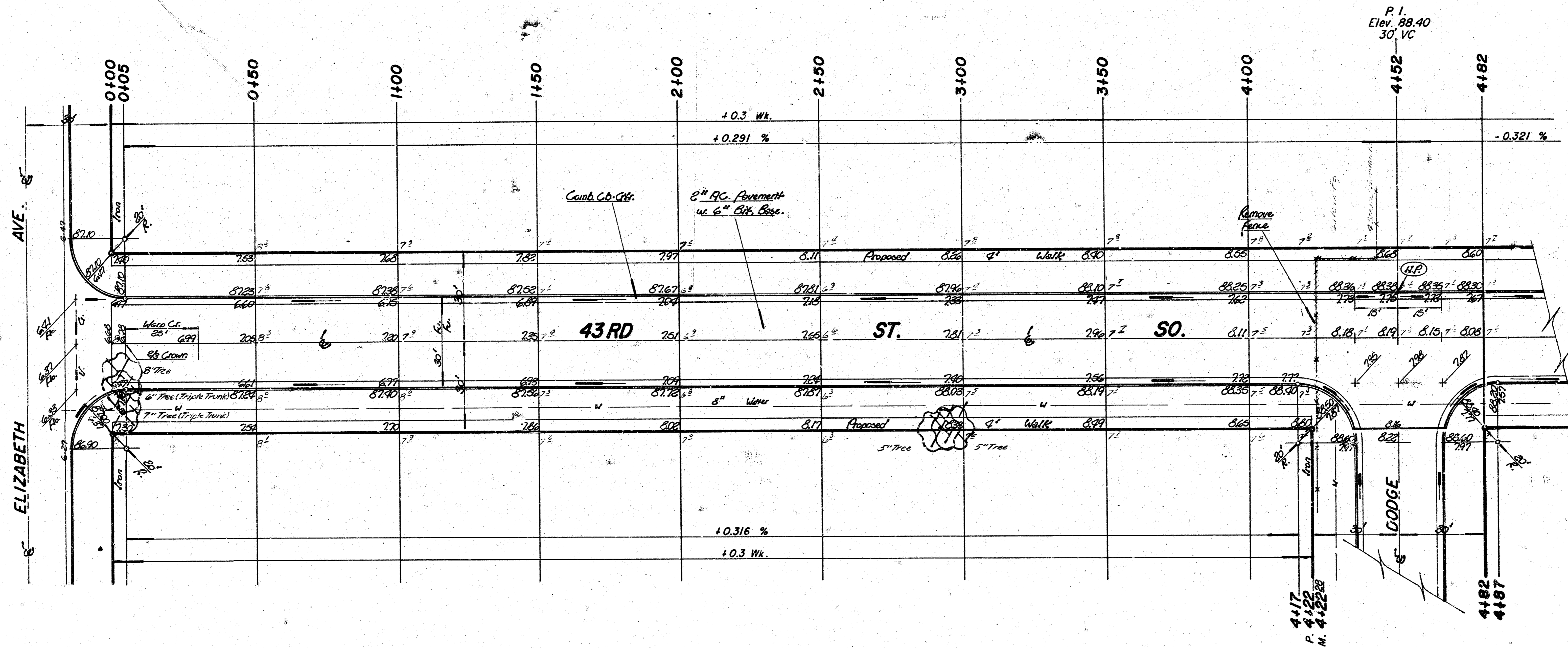
1/2

B

B.M. 88.28 RR Spike in South side of power pole on the Southwest corner of 44th Street South and Dodge.
 B.M. 88.96 RR Spike in tree on the East side of the North line of 43rd Street South extended West.
 B.M. 87.85 RR Spike in the South side of the power pole on the Southwest corner of Elizabeth and 44th Street South.
 @ is South Property Line of 43rd Street South.

No More Than 1-20' Drive Or The Equivalent To Be Constructed

Scale: 1" = 20'



Survey
 Plan
 Exc.
 Checked

Notes:
 Trees to be removed are marked with , except that any tree which in the opinion of the Engineer can be saved, shall be spared. Contractor to take trees and any "irons" either moved or destroyed during construction shall be replaced.

indicates fence removal.

Property		City	
Excavation = 53.5 cy	Comp. fill = 74.1 cy	Excavation = 3.3 cy	Comp. fill = 4.9 cy
+10% = 58.8 cy	+10% = 81.5 cy	+10% = 3.6 cy	+10% = 5.4 cy
Total = 64.7 cy	Total = 81.5 cy	Total = 3.6 cy	Total = 5.4 cy
Manipulation = 1657.8 cy		Manipulation = 175.8 cy	

43RD STREET SOUTH
 E.L. Elizabeth to E.L. Dodge
 (26-2-30 Asphaltic Concrete Pav't.)
CITY OF WICHITA, KANSAS
 472 76 245 80398 000 000 001
 DEAN SELLERS, CITY ENGINEER
 PROJECT NUMBER: DAKS576037
 DATE: _____

(2/3)

2/2