

# CITY OF WICHITA, KANSAS

## LANDSCAPE PLANS

ON 47TH STREET SOUTH, FROM SENECA TO BROADWAY

PROJECT NO.: 472-82604

INDEX CODE: 706234

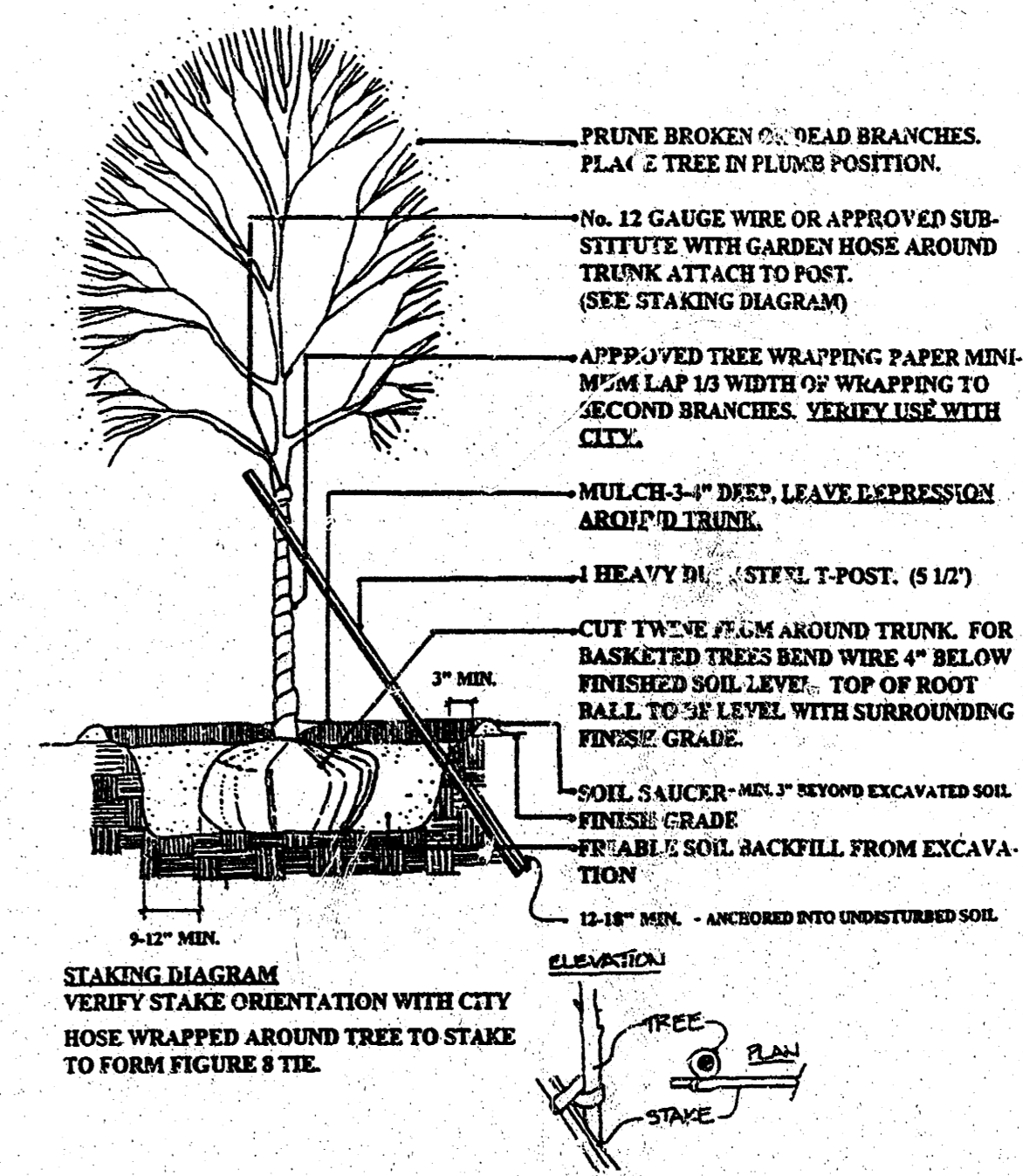
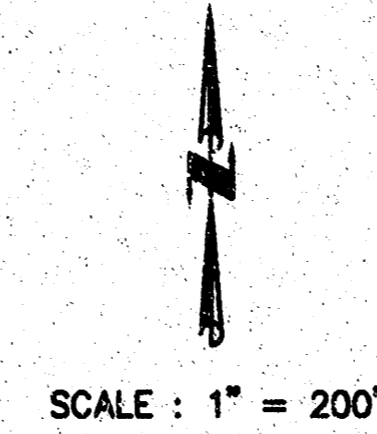
**INDEX:**

Sheet No.	Description
1	Title Sheet
2 - 5	Landscape Plans

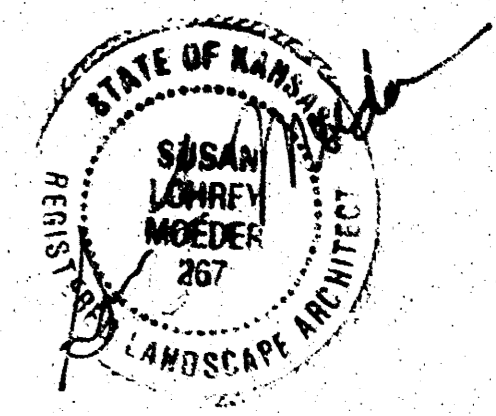
SENECA STREET

BROADWAY AVENUE

47TH STREET SOUTH



DECIDUOUS TREES: 2" CALIPER AND SMALLER NO SCALE



**General Notes:**

- Exact location for tree plantings to be determined by the engineer.
- Landscape contractor is to verify the location of ALL utilities prior to installation of plant materials.

**PLANT LIST:**

Qty.	Botanical Name	Common Name	Size (inches)	Cond.	Notes
18	Fraxinus pennsylvanica 'Marshall Seedless'	Marshall Seedless Ash	2	B&B	
26	Gleditsia triacanthos inermis 'Imperial'	Imperial Honeylocust	2	B&B	
7	Gymnocladus dioica	Kentucky Coffee Tree (male)	2	B&B	
12	Maclura pomifera 'Wichita'	Wichita Osage Orange	2	B&B	
29	Acer ginnala	Amur Maple	1 1/2	B&B	Multi-stem
45	Cercis reniformis 'Oklahoma'	Oklahoma Redbud	1 1/2	B&B	
20	Koeleruteria paniculata	Goldenraintree	2	B&B	
41	Malus cv. 'Snowdrift'	Crabapple 'Snowdrift'	1 1/2	B&B	
16	Pistacia chinensis	Chinese Pistache	2	B&B	
5	Sapindus drummondii	Western Soapberry	1 1/2	B&B	or 5 gal. cont. 5 - 7'
219					

\* If not available locally, check availability at Sunnyside Nursery, Clinton, OK or Valley Tree Farm, OKC. OK

LOCATION MAP

MICHAEL E. LINDEBAK, P.E., CITY ENGINEER

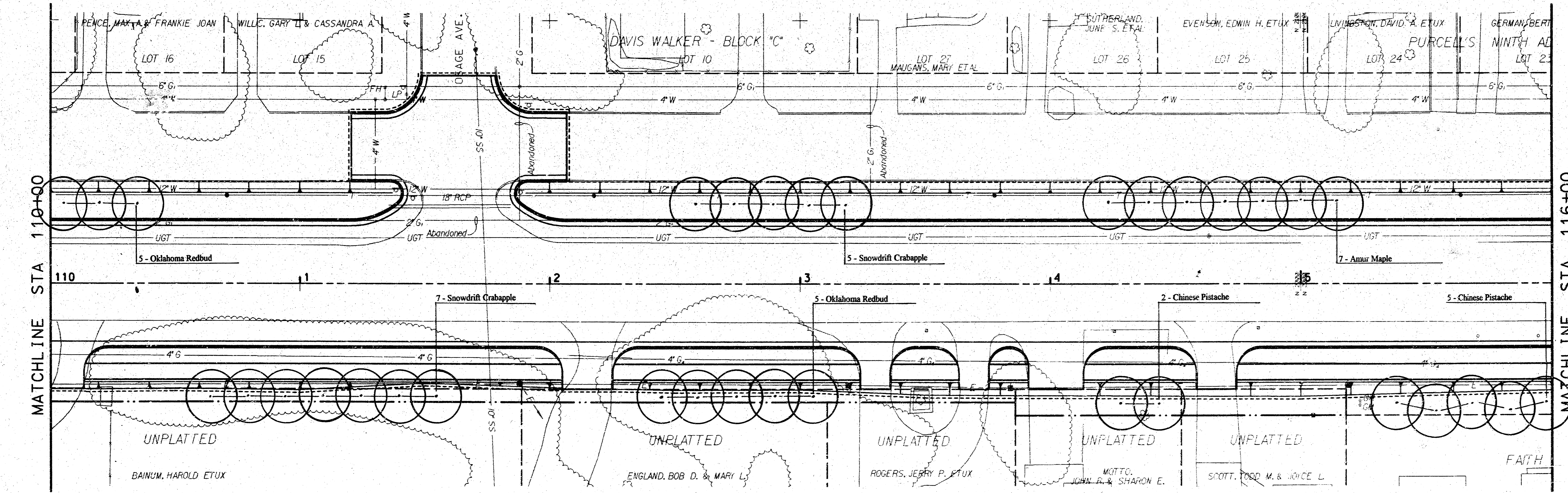
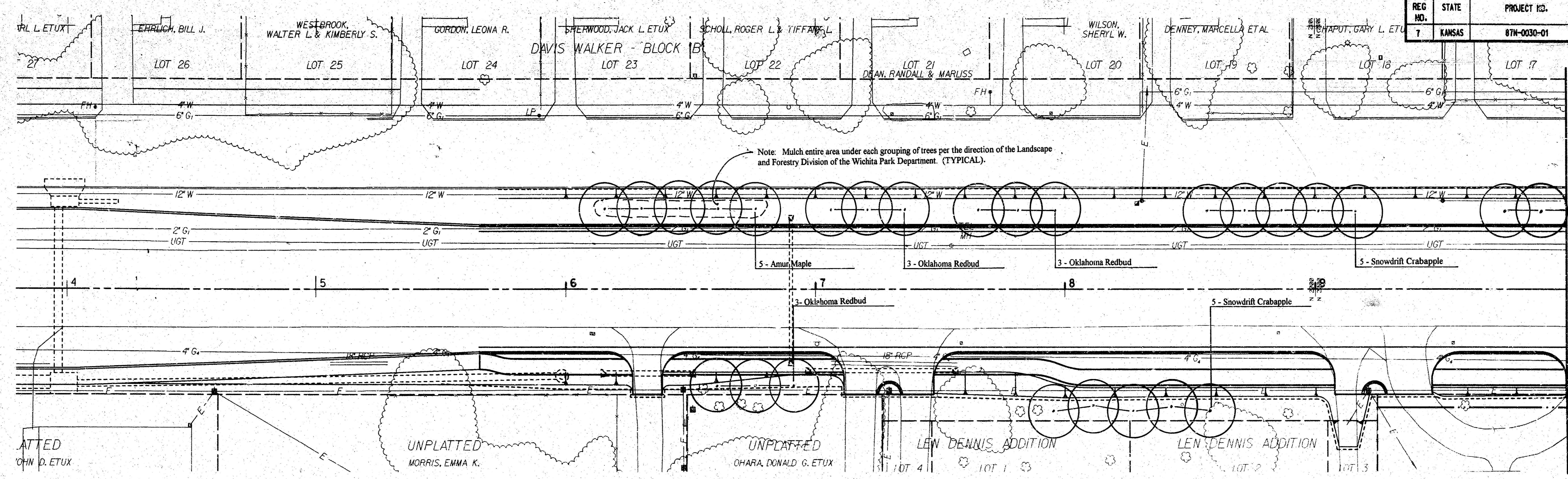
Susan Moeder, LSA

**TITLE SHEET**

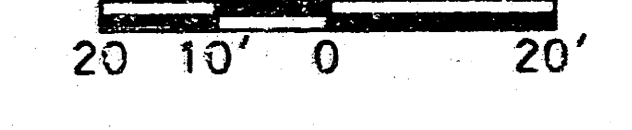
SCALE:	APPROVED:	DRAWN BY:
DATE:	CHECKED:	
PROJECT NO: 87N-0020-01	SHEET NO.: 1 OF 5	
<b>MUNICIPAL ENGINEERS</b> 254-LAURA, SUITE 201 WICHITA, KANSAS 67211 316-262-3842		

FHWA REG. NO.	STATE	PROJECT NO.	YEAR	SHEET NO.	TOTAL SHEETS
7	KANSAS	87N-0030-01	1996	2	5

DATE	
BY	
REFERENCES NOTED	
REFERENCES CHECKED	

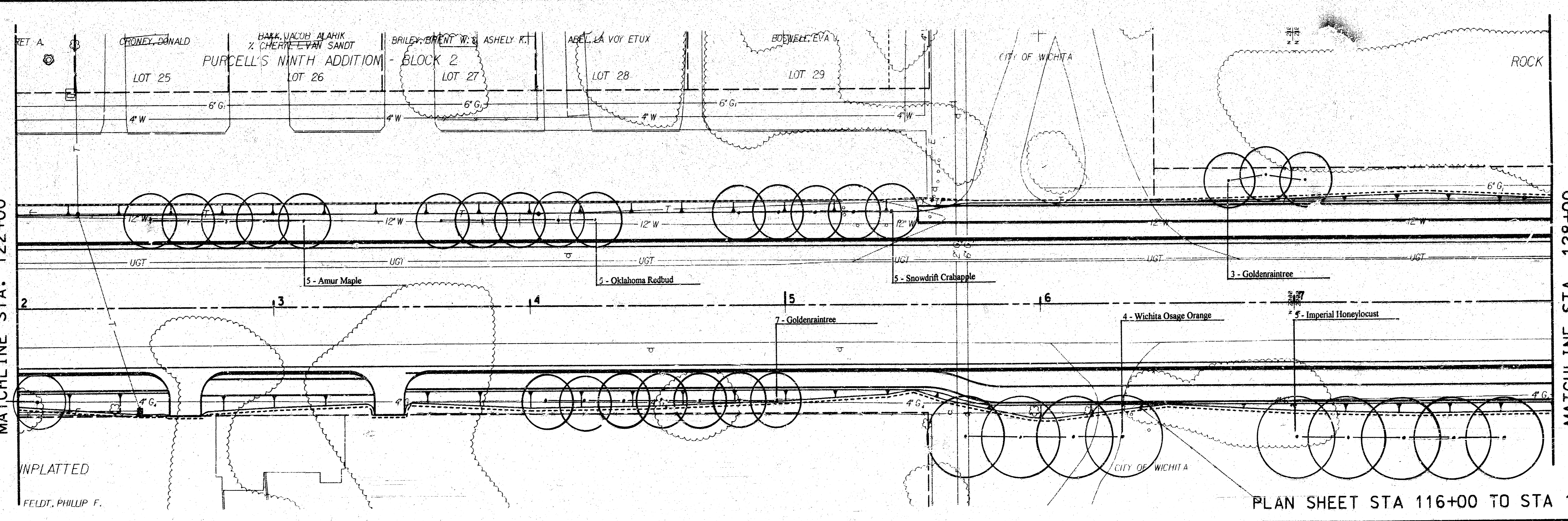
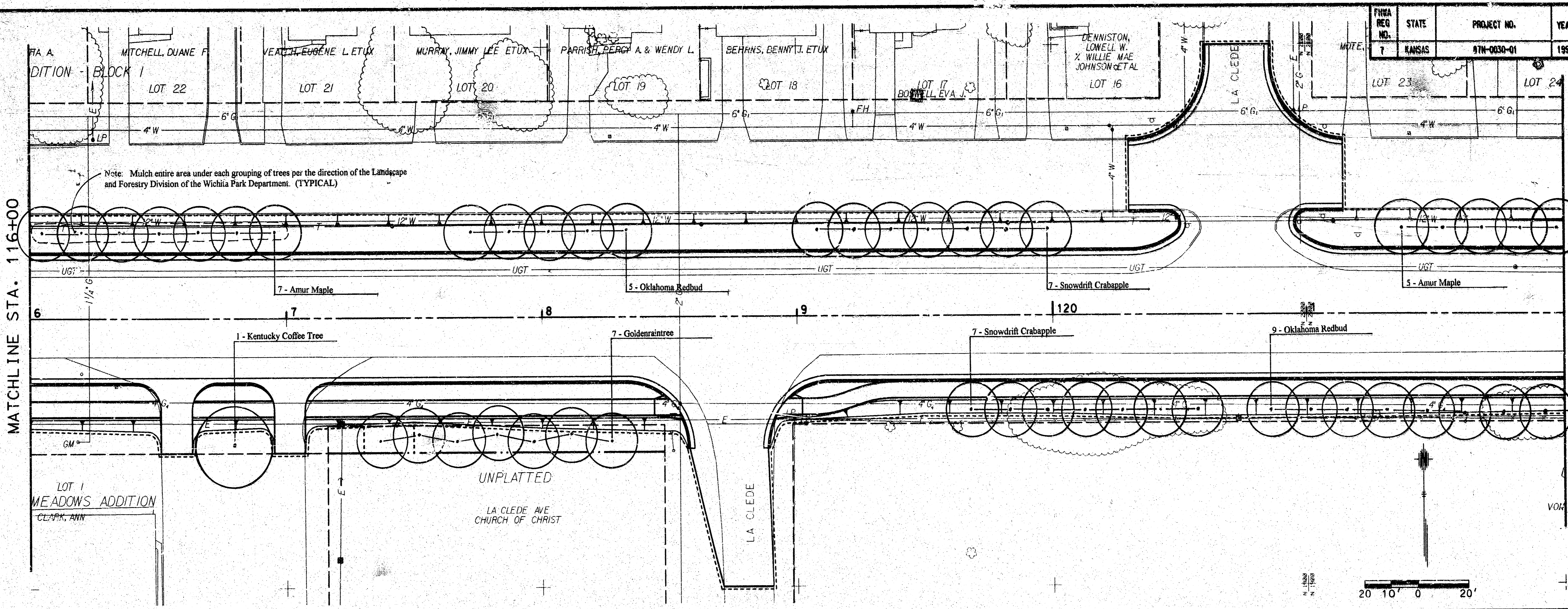


SOURCE FILE:	
DRAWN BY:	
DGN FILE:	
PLOTTED:	



PLAN SHEET STA 105+00 TO STA 116+00

FHWA REG. NO.	STATE	PROJECT NO.	YEAR	SHEET NO.	TOTAL SHEETS
7	KANSAS	97N-0030-01	1996	3	5

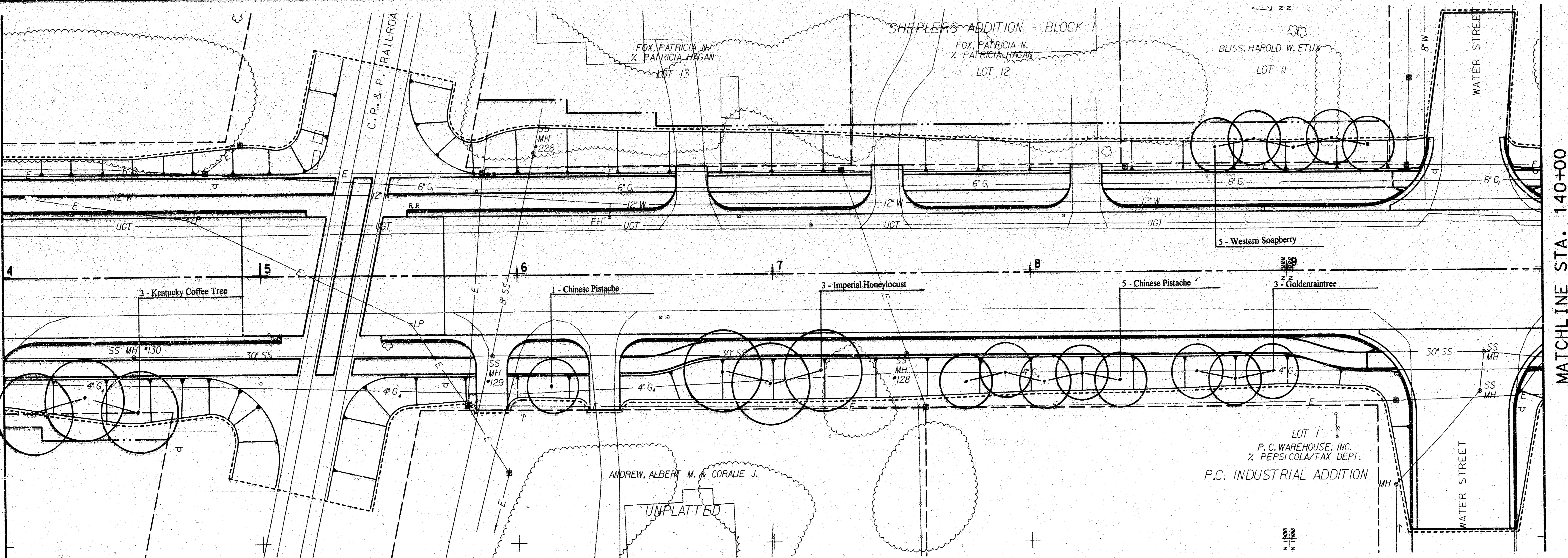
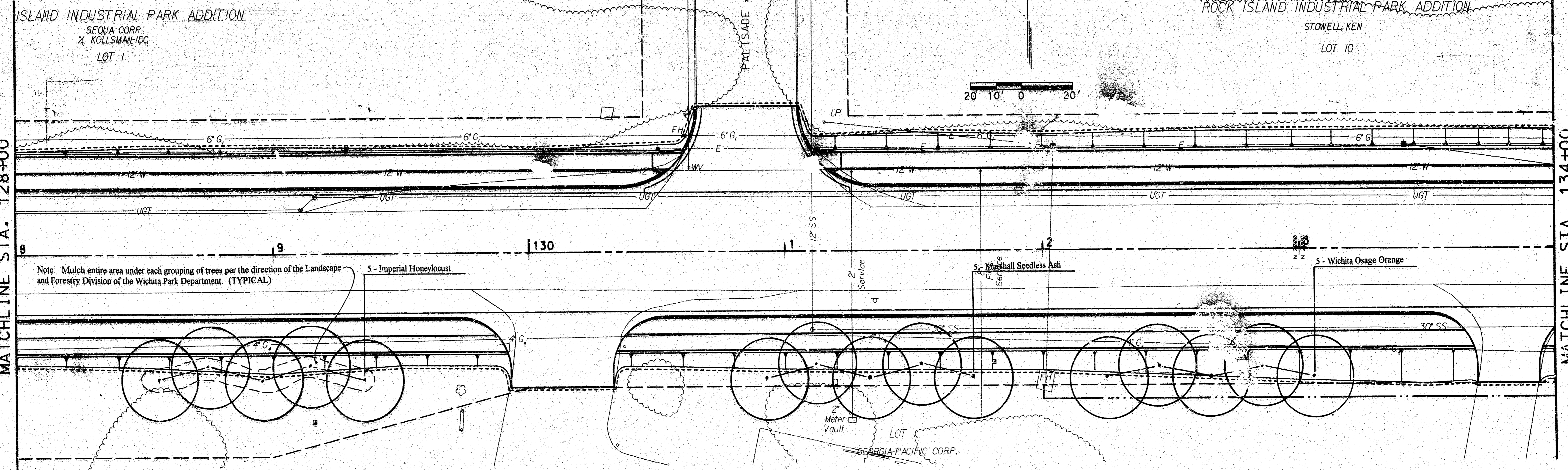


PLAN SHEET STA 116+00 TO STA 128+00

DATE	BY

SOURCE FILE:
DRAWN BY:
DGN FILE:
PLOTTED:

FHWA REG. NO.	STATE	PROJECT NO.	YEAR	SHEET NO.	TOTAL SHEETS
7	KANSAS	67N-0030-01	1996	4	5



MATCHLINE STA. 128+00

MATCHLINE STA. 134+00

MATCHLINE STA. 134+00

MATCHLINE STA. 140+00

ISLAND INDUSTRIAL PARK ADDITION  
SEQUA CORP.  
X. KOLLSMAN-IDC  
LOT 1

ROCK ISLAND INDUSTRIAL PARK ADDITION  
STONELL, KEN  
LOT 10

SHEPLERS ADDITION - BLOCK 1  
FOX, PATRICIA N.  
X. PATRICIA HEGAN  
LOT 12

BLISS, HAROLD W. ETUX  
LOT 11

ANDREW, ALBERT M. & CORALIE J.  
UNPLATTED

LOT 1  
P. C. WAREHOUSE, INC.  
X. PEPSICOLA/TAX DEPT.  
P.C. INDUSTRIAL ADDITION

Note: Mulch entire area under each grouping of trees per the direction of the Landscape and Forestry Division of the Wichita Park Department. (TYPICAL)



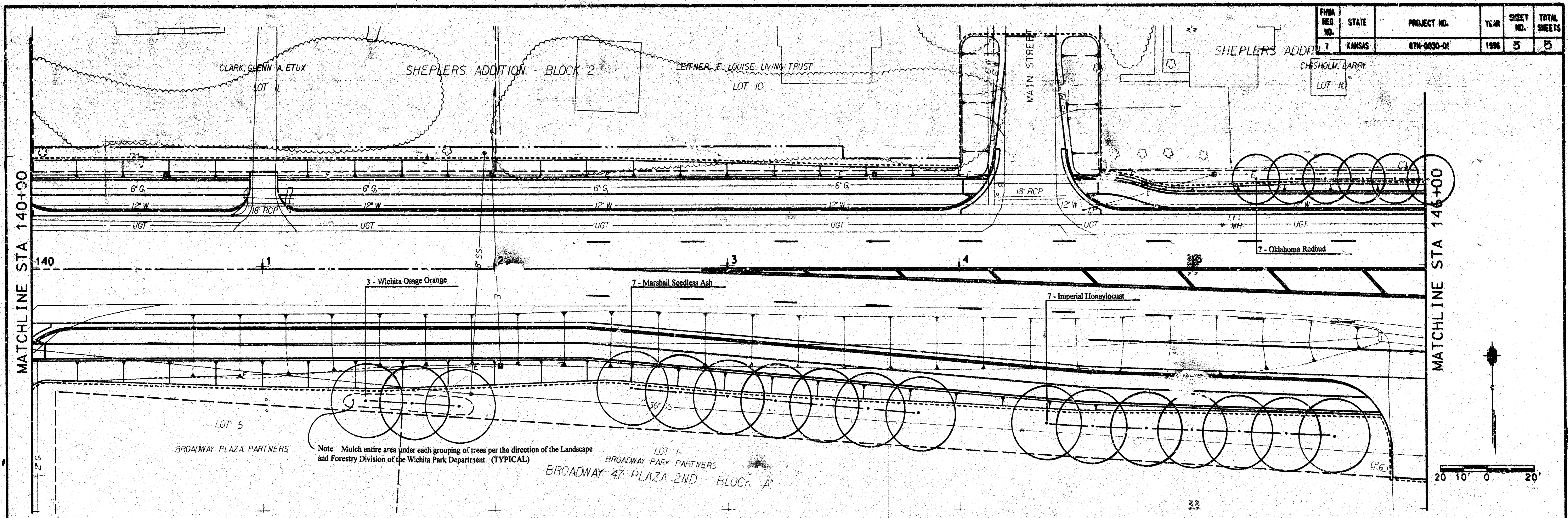
DATE	BY

SOURCE FILE:
DRAWN BY:
DGN FILE:
PLOTTED:

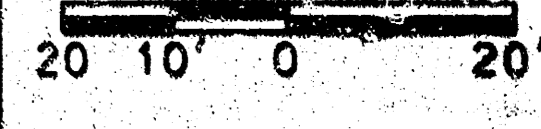
PLAN SHEET STA 128+00 TO STA 140+00

FINA REG NO.	STATE	PROJECT NO.	YEAR	SHEET NO.	TOTAL SHEETS
7	KANSAS	07N-0030-01	1996	5	5

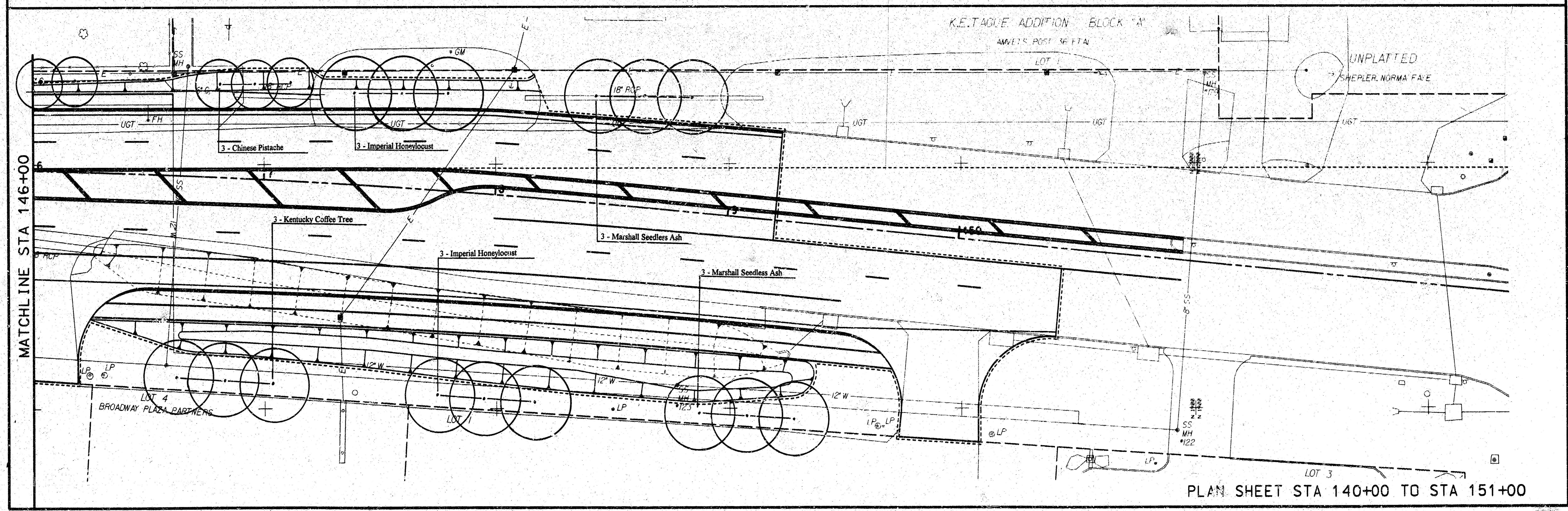
DATE	
BY	
REFERENCES NOTED	
REFERENCES CHECKED	



Note: Mulch entire area under each grouping of trees per the direction of the Landscape and Forestry Division of the Wichita Park Department. (TYPICAL)



SOURCE FILE:	
DRAWN BY:	
DGN FILE:	
PLOTTED:	



PLAN SHEET STA 140+00 TO STA 151+00