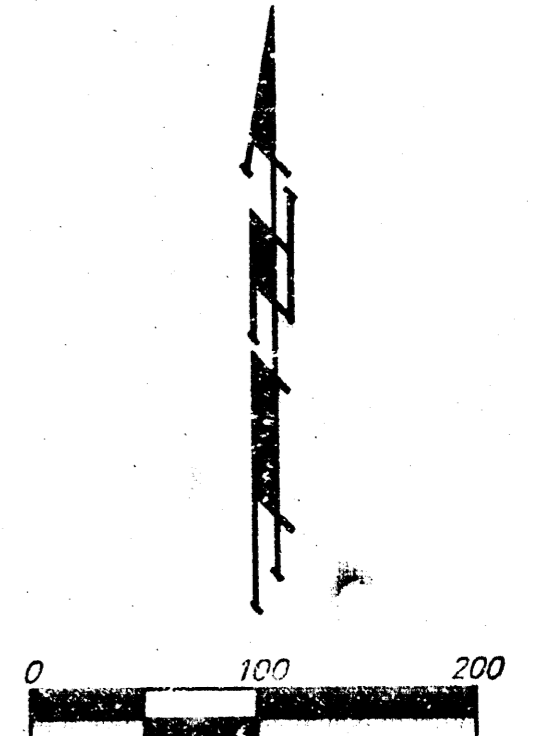
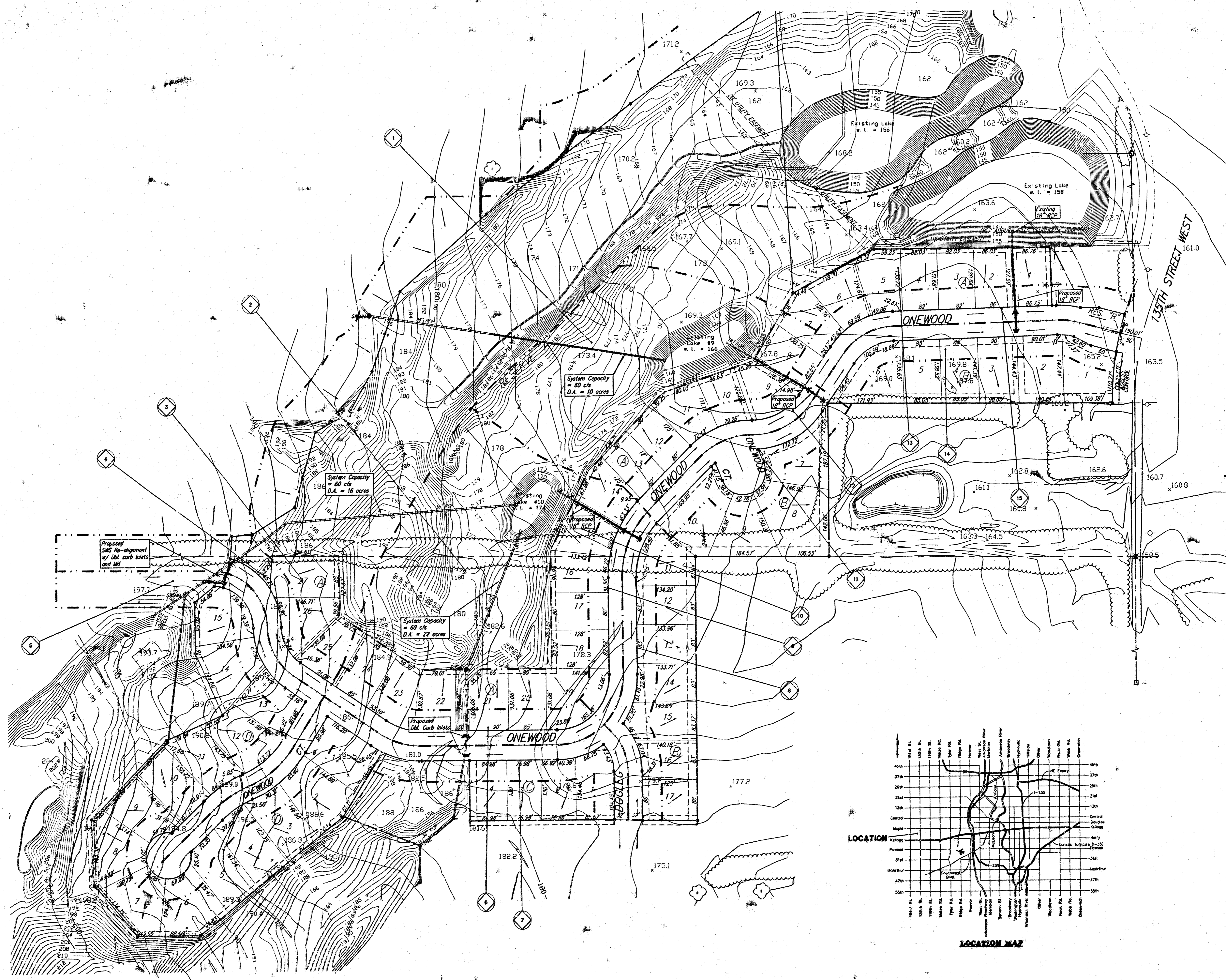
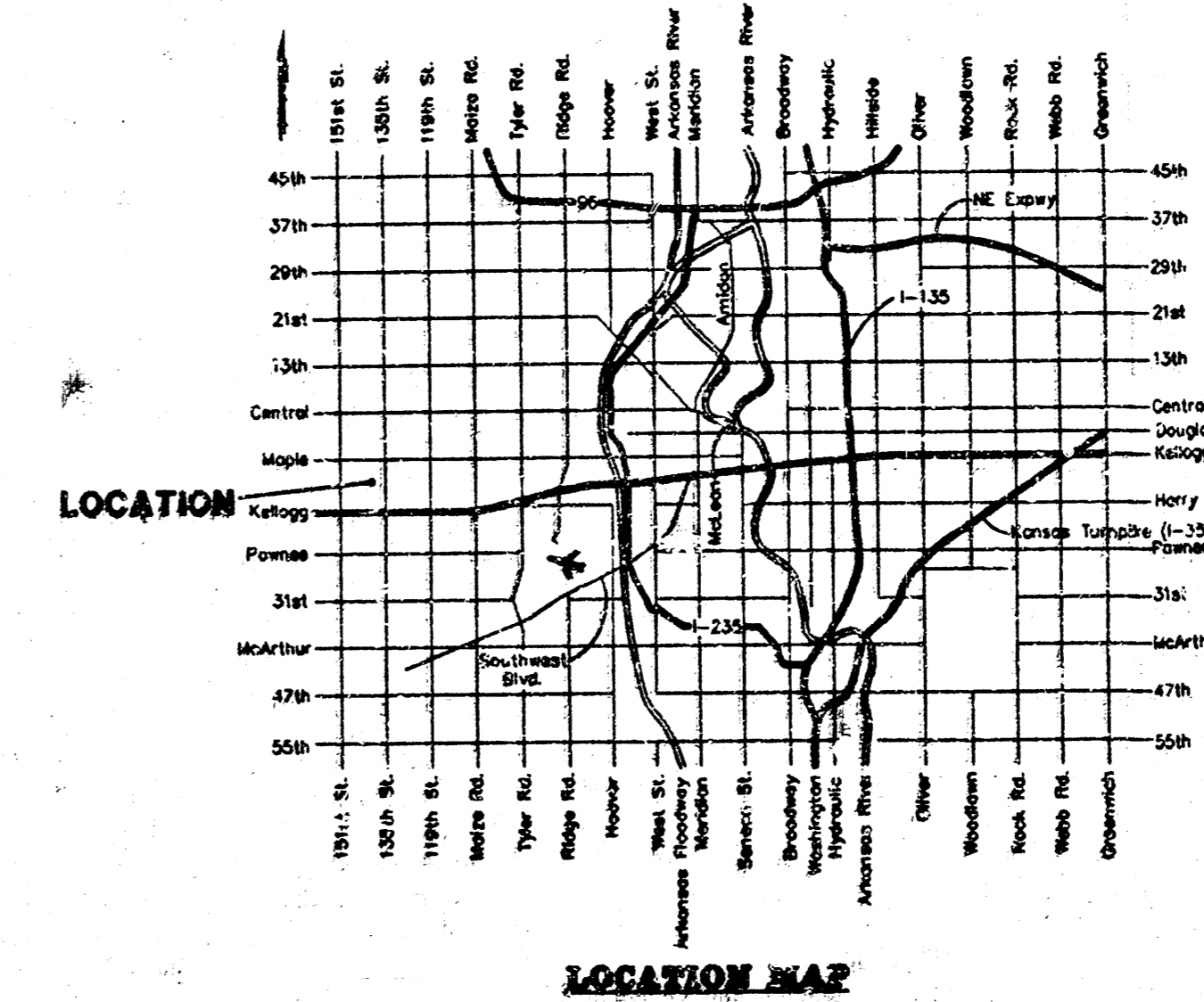


DRAINAGE PLAN AUBURN HILLS 13TH ADDITION WICHITA, SEDGWICK COUNTY, KANSAS



- (M) = MEASURED
- (D) = DESCRIBED
- (P) = PLATTED
- (C) = CALCULATED
- (C-P) = CALCULATED PER PLATTED INFO
- = #4 REBAR W/ "BAUGHMAN" CAP (SE7)
- = 3/4" IRON (FOUND)
- ⊗ = 1" IRON (FOUND)
- = #8 REBAR (FOUND)
- ◇ = 1/2" IRON (FOUND)
- ⊗ = Basin Identifier
- = Drainage Basin Divider
- = General Flow Direction

Drainage Area	Area (acres)	C _s	C _m	T _t (min)	T _t (hr)	Q ₁ (cfs)	Q ₂ (cfs)	Q ₃ (cfs)
1	3.8	0.4	0.45	15	3.85	7.37	5.8	4.8
2	4.2	0.4	0.45	15	3.85	7.37	5.8	4.4
3	0.5	0.54	0.50	15	3.85	7.37	1.0	2.2
4	1.1	0.54	0.50	15	3.85	7.37	2.3	4.9
5	2.2	0.54	0.50	15	3.85	7.37	4.6	9.7
6	1.1	0.54	0.50	15	3.85	7.37	2.3	4.8
7	2.4	0.54	0.50	15	3.85	7.37	5.0	11
8	1.2	0.54	0.50	15	3.85	7.37	2.5	5.3
9	0.9	0.54	0.50	15	3.85	7.37	1.9	4.0
10	1.9	0.45	0.50	15	3.85	7.37	3.3	7.0
11	1.2	0.54	0.50	15	3.85	7.37	2.5	5.3
12	0.9	0.54	0.50	15	3.85	7.37	1.9	4.0
13	1.2	0.45	0.50	15	3.85	7.37	2.1	4.4
14	1.2	0.54	0.50	15	3.85	7.37	2.5	5.3
15	1.4	0.54	0.50	15	3.85	7.37	2.9	6.2



NOTE: Minimum Pond Elevations shall be as noted on the recorded Plat.
 NOTE: The proposed drainage plan provided herein is a generally defined plan to follow for design. It is recognized and assumed that upon the final design of street and storm sewer improvements within this plat that the designer will modify or alter the general drainage plan as necessary in order to implement the installation of the improvements to obtain the most economical design and construction possible.