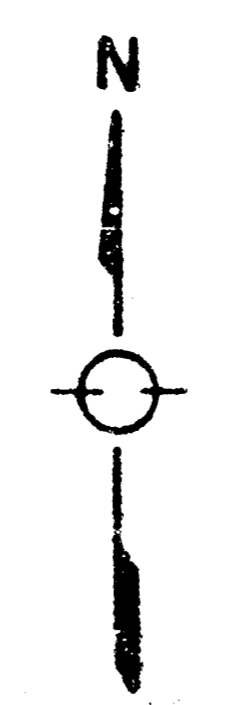


**PRELIMINARY PLAT**  
**BADER 3RD ADDITION**

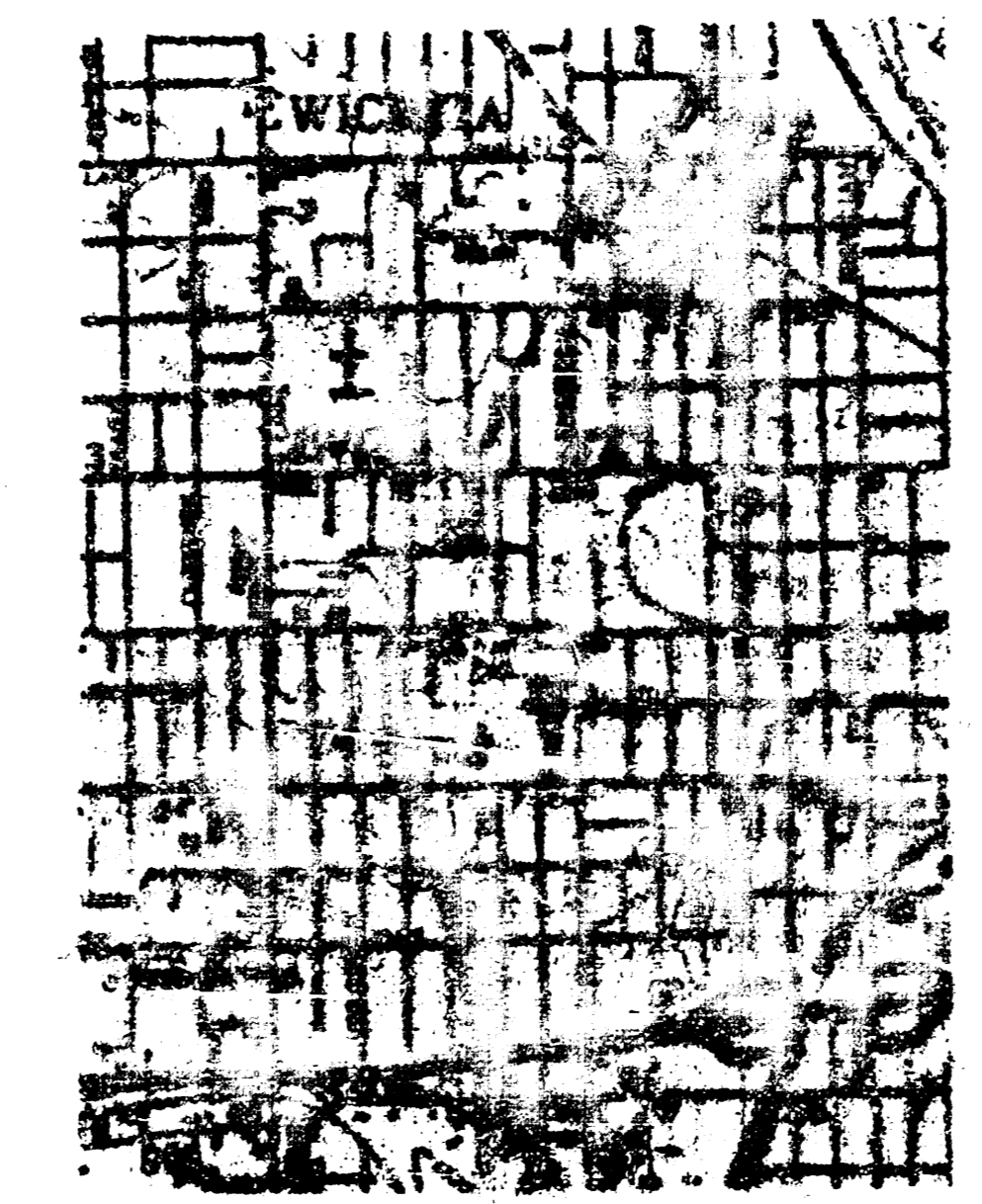
PART OF THE S.W. 1/4  
SEC. 24, TWP. 27-3, R-1-W W.

OSWALD BADER



Scale: 1" = 40'  
Elevation - City Datum

BENCH MARK:  
City Standard Disc 34 W  
118.5' S of & West St  
and 2nd St  
Elevation - 118.87 City Datum



VICINITY MAP  
1" = 200'

General Notes

The lots are residential and will drain to the streets discharging thru driveways. High Street when paved will drain as the proposed grades will allow. Joann and 2nd Streets are paved and drain north and east respectfully. Knight is unpaved and drains north to 2nd Street. 1st Street is unpaved and will drain east to Joann when paved.

Revised

**DRAINAGE PLAN**

7-26-67 Edition  
6-10-68

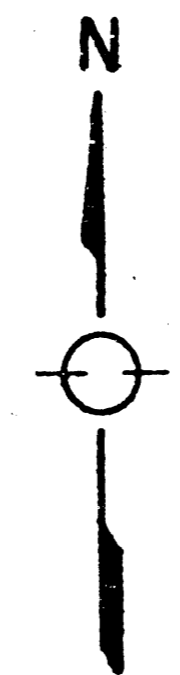
BAURMAN COMPANY, P.A.  
SURVEYING & ENGINEERING  
PHILADELPHIA - PITTSBURGH - WILKES-BARRA

**FILMED FROM THE BEST AVAILABLE COPY**

PRELIMINARY PLAT  
**BADER 3RD ADDITION**

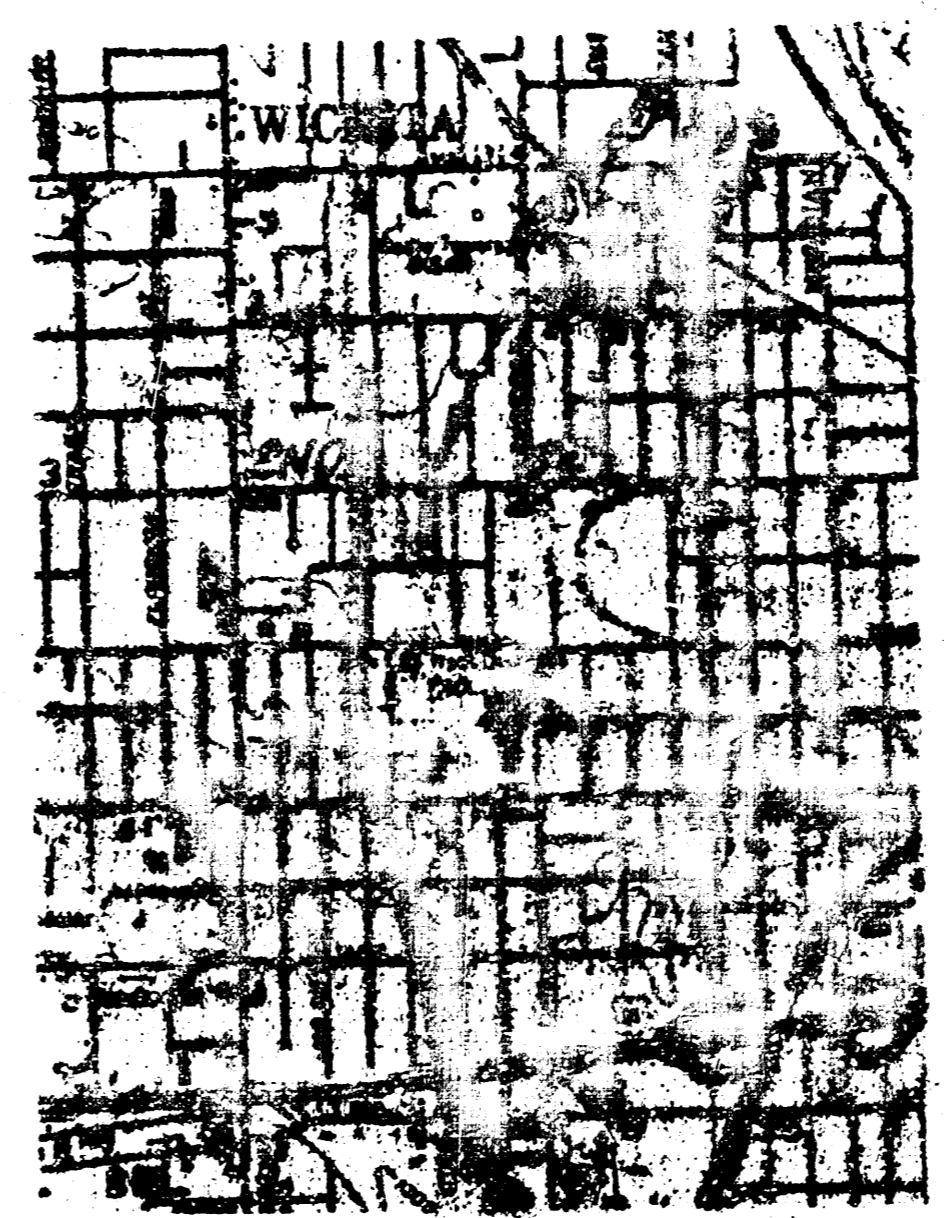
PART OF THE S.W. 1/4  
SEC. 24, TWP. 27-S, R-1-W W.

GERALD BADER

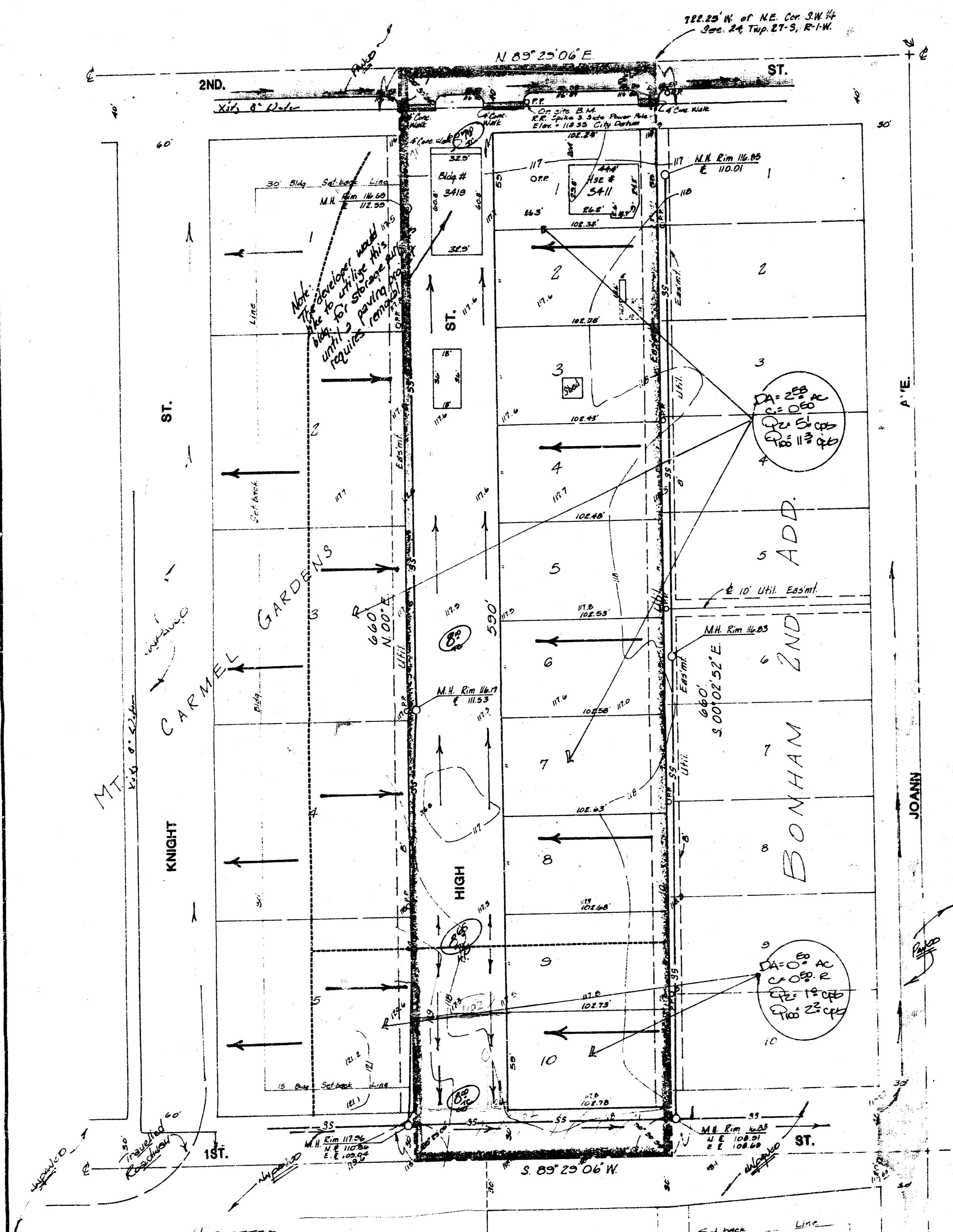


Scale: 1" = 40'  
Elevation - City Datum

BENCH MARK  
City Standard Disc 34 W  
4' 10" S of Q West St  
and 2nd S  
Elevation - 118.87 City Datum



V. HARRISON  
1" = 200'



General Notes

The lots are residential and will drain to the streets discharging thru driveways. High Street when paved will drain as the proposed grades will allow. Joann and 2nd Streets are paved and drain north and east, respectively. Knight is unpaved and drains north to 2nd Street. 1st Street is unpaved and is presently unpaved and will drain east to Joann when paved and opened to traffic.

HOWARD V. HARRISON  
2ND ADD.

VOID

**DRAINAGE PLAN**

6-10-66

BAUGHMAN COMPANY, P.A.  
SURVEYING & ENGINEERING  
1000 ...

FILMED FROM THE BEST  
AVAILABLE COPY