

DRAINAGE PLAN BAREFOOT BAY ESTATES WICHITA, SEDGWICK COUNTY, KANSAS

Existing Conditions:
D.A. = 1.5 ac.
Tc = 15 min.
C_u = 33/35/51
Q₁ = 1.9 cfs
Q₂ = 2.4 cfs
Q₃ = 5.6 cfs
Developed Conditions:
C_u = 36/38/54
Q₁ = 2.1 cfs
Q₂ = 2.6 cfs
Q₃ = 6.0 cfs

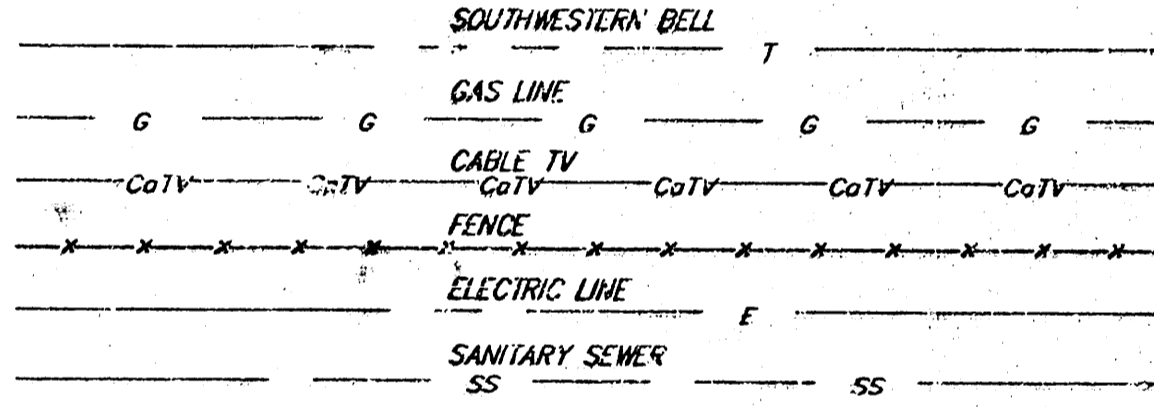
Big Slough South
D.A. = 16,128 ac.
Q₃ = 2,375 cfs

W.S. = 131.0
B.F.E. = 138.2

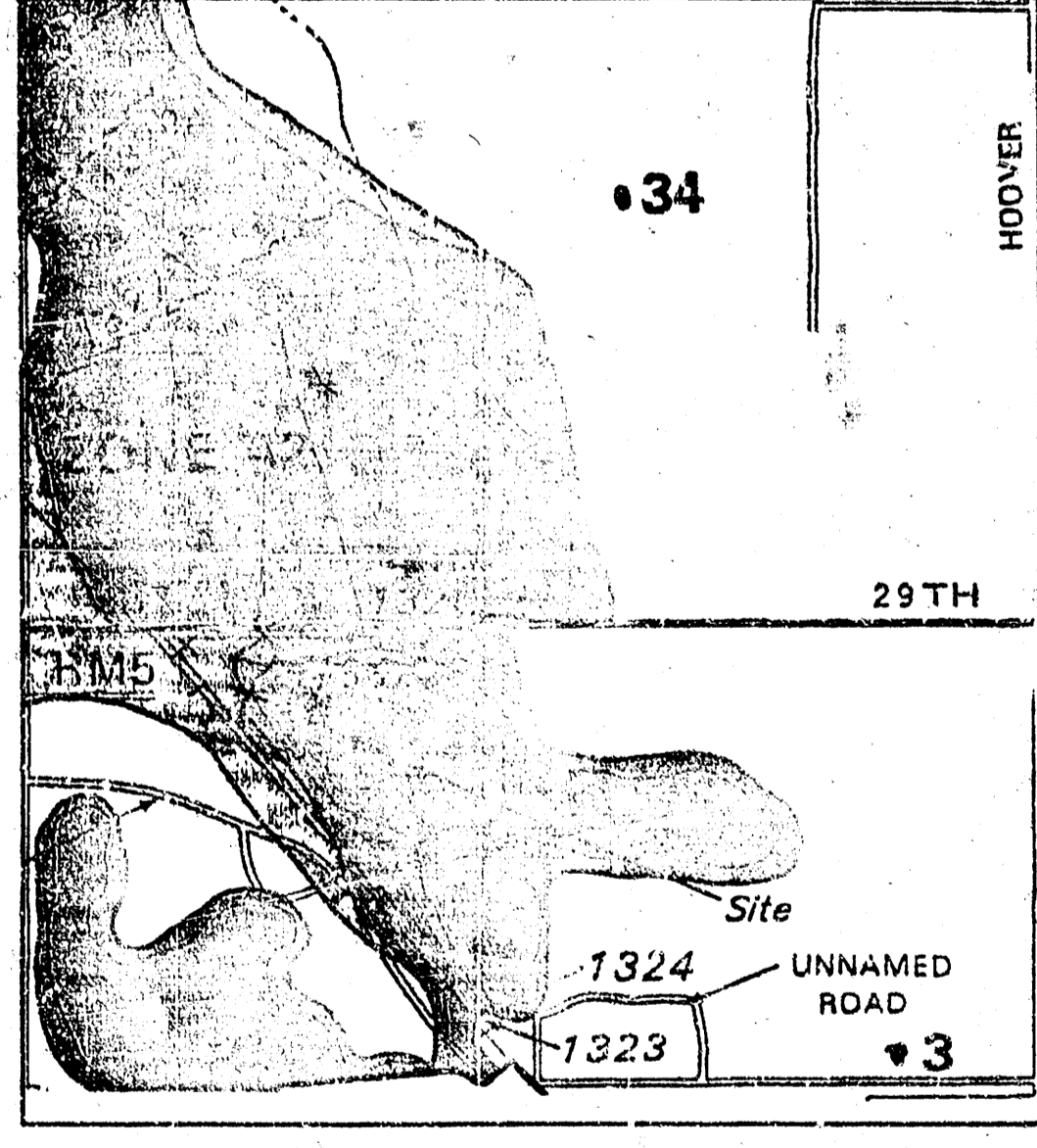
Existing Conditions:
D.A. = 4.0 ac.
Tc = 15 min.
C_u = 33/35/51
Q₁ = 5.1 cfs
Q₂ = 6.4 cfs
Q₃ = 15 cfs
Developed Conditions:
C_u = 36/38/54
Q₁ = 5.5 cfs
Q₂ = 6.9 cfs
Q₃ = 16 cfs

BAREFOOT BAY OWNERS ASSOCIATION
PO BOX 45448
WICHITA, KS 67201-8448

- 0 60 120
- ⊕ = #4 REBAR W/ "BAUGHMAN" CAP (FOUND)
 - ⊕ = #4 REBAR W/ "BAUGHMAN" CAP (SET)
 - ⊕ = #4 REBAR W/ "TACO" CAP (FOUND)
 - ⊕ = #4 REBAR W/ "TACO" CAP (SET)
 - ⊕ = 3/4" REBAR W/ "TACO" CAP (FOUND)
 - ⊕ = 3/4" REBAR W/ "TACO" CAP (SET)
 - ⊕ = RAILROAD SPOKE (FOUND)
 - (M) = MEASURED
 - (D) = DESCRIBED
 - (P) = PLATTED
 - (C) = CALCULATED
 - (C-P) = CALCULATED PER PLATTED INFO.
- BENCHMARK:**
COW benchmark located at the SW cor of intersection of 29th and Ridge Rd.
Elev. = 130.15 City Datum
- NOTE:**
TERMS AND PROVISIONS OF THE GRANT OF UTILITY EASEMENT FILED ON FILM 1802, PAGE 822.



Drainage Note:
This Parcel of Land is Located in A FEMA Flood Hazard Zone A2 Or Zone B per The Below FIRM Map - (Community/ Panel Number: 200321 0125A) Effective Date: June 3, 1996.



MINIMUM BUILDING PAD ELEVATIONS FOR LOWEST OPENING TO THE STRUCTURES		
LOT	BLOCK	ELEVATION CITY DATUM
1-8	A	141.0

RICH-MAX PRODUCTS, INC.
PO BOX 7717
WICHITA, KS 67277