

RAINBOW LAKES WEST THIRD ADD.

EIGHTEENTH  
VILLAGE WESTLINK

# DRAINAGE PLAN BAY COUNTRY ESTATES

OWNER: WESTLINK INVESTMENT CORPORATION - THURMAN SMITH  
1216 W. MAPLE WICHITA, KS. 67209

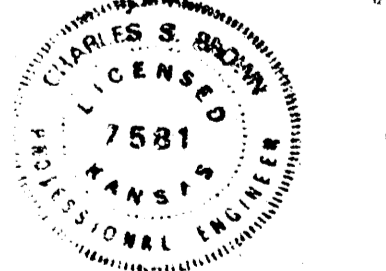
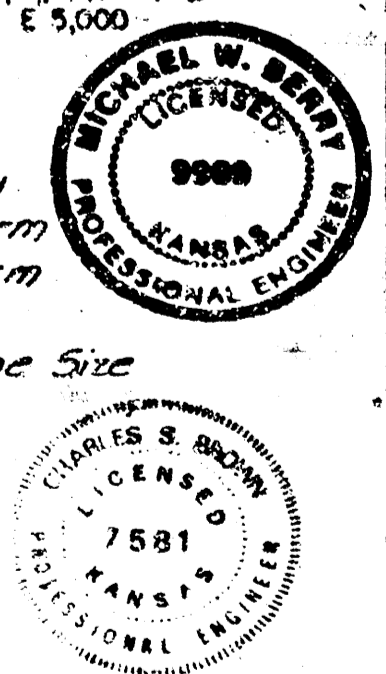
TOPOGRAPHIC MAP OF LANDS LOCATED  
IN THE S.E. 1/4 OF SEC. 24  
T. 27 S. R. 2 W., SEDGWICK COUNTY, KANSAS

- LEGEND**
- Drainage Basin Boundary
  - - - Drainage Sub-basin Boundary
  - Drainage Direction - Minor Storm
  - Drainage Direction - Major Storm
  - Node Identification
  - 12" 20' Inlet & Eye Pipe Size/100' Pipe Size
  - 20' 2" Approx. Top Curb Elev.
  - SCS Soil Class Boundary
  - Plat Boundary
  - FEMA Boundary
  - Regulatory Flood Elevation

MILES AIR PHOTO SURVEY  
PHOTOMETRIC SERVICES  
OF WYATT, KANSAS 67209  
(913) 442-1550 FILE NO. M-10-14

PROFESSIONAL ENGINEERING CONSULTANTS, P.A.  
ENGINEERS  
WICHITA, KANSAS

SCALE 1" = 100'  
CONTOUR INTERVAL 2'  
PHOTOGRAPHY DATE SEPT. 8, 1979  
REV. 12-14-81

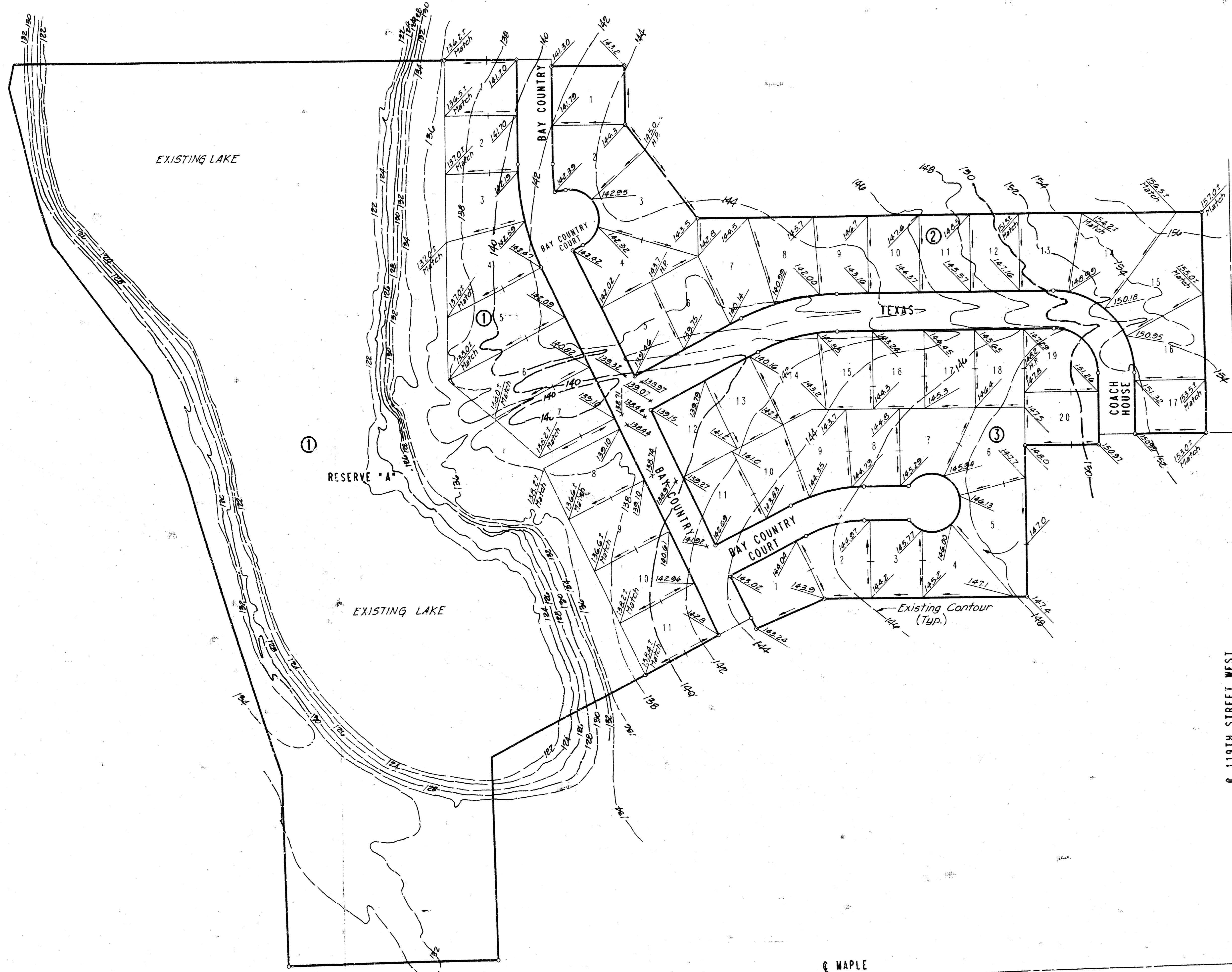


FILMED FROM THE BEST AVAILABLE COPY.

# BAY COUNTRY ESTATES 2ND ADDITION

TO WICHITA, SEDGWICK COUNTY, KANSAS

PROJECT NO.	SHEET NO.	TOTAL SHEETS
# 412-76-245-8 -000-000-001		



SCALE: 1" = 100'

- = IRON SET
- C.A.C. = COMPLETE ACCESS CONTROL
- B.S.L. = BUILDING SETBACK LINE
- S.S. ESM.T. = SANITARY SEWER EASEMENT
- B.M. = DISK 40' EAST AND 46' SOUTH OF INTERSECTION AT E OF CENTRAL WITH E OF 119TH STREET WEST CITY DATUM ELEV. -156.93

MINIMUM PAD ELEVATION (LOWEST OPENING) FOR LOTS 1 THROUGH 11, BLOCK 1, SHALL BE 1523.00 W.S.L. OR 155.60 (CITY DATUM).

PLAN	DATE
BY	
DATE	
BY	
DATE	
BY	
DATE	

DRAWING NAME: 22-92103 PLAT  
 CLEAR COORDINATES:  
 ROTATION ANGLE: ON  
 SPECIAL INSTRUCTIONS:

**APPROVED**  
**DRAINAGE PLAN**

BAY COUNTRY ESTATES 2ND ADDITION

**DETAIL LOT GRADING PLAN**

PROFESSIONAL ENGINEERING CONSULTANTS, P.A.  
 ENGINEERS  
 WICHITA, KANSAS

Designed by	Checked by
Drawn by DEP	Date: JUNE, 1992 Job No.

S.E. Cor. Sec. 24,  
 T27S, R2W of the 61N P.M.

S. Line SE 1/4, Sec. 24, T27S, R2W  
 MAPLE