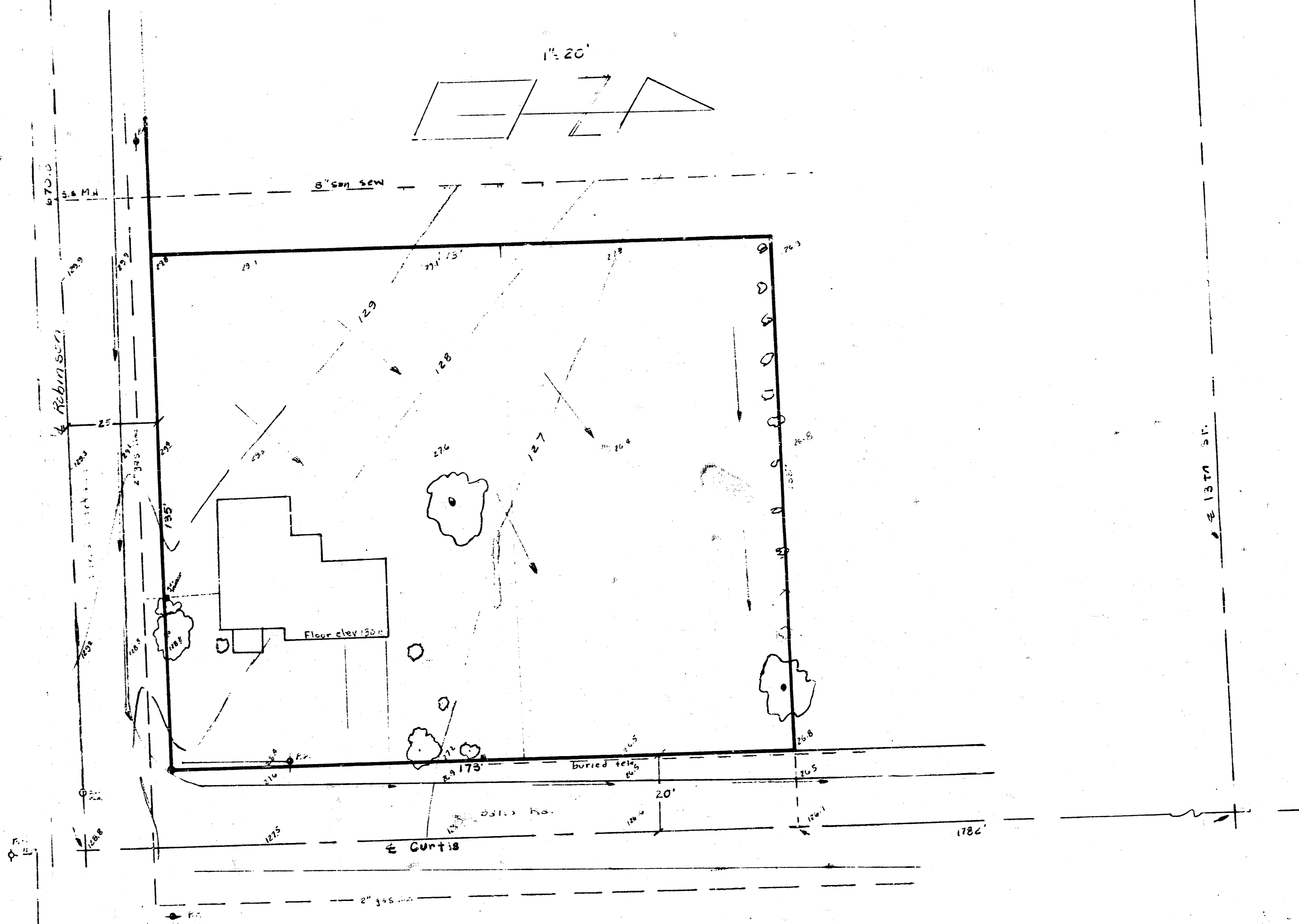


BOOTHE'S CORNER ADDITION
(DRAINAGE)

PLAT OF BOOTHE'S CORNER
AN ADDITION TO WICHITA, SEDGWICK COUNTY, KS.

NW cor NW 1/4 sec 14
T.27S. R.1W.



NOTE: KGE lines are overhead.

FILMED FROM THE BEST
AVAILABLE COPY