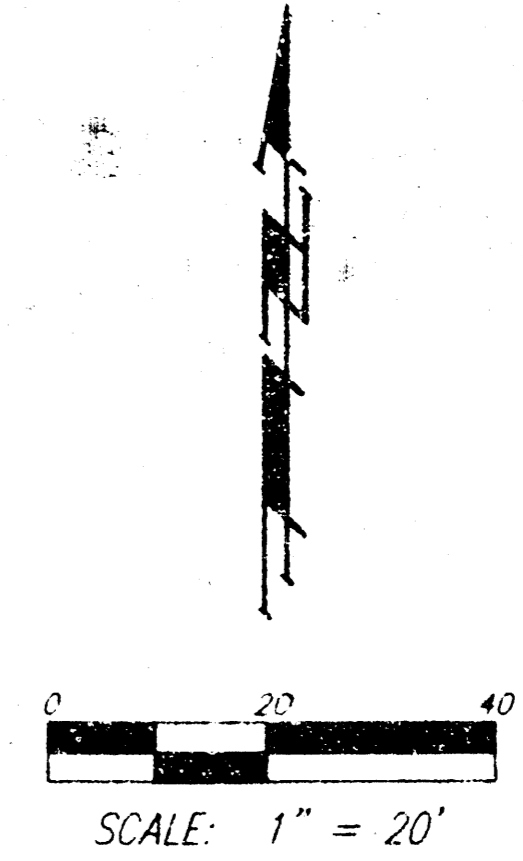


# DRAINAGE PLAN

## BORROR ADDITION

### WICHITA, SEDGWICK COUNTY, KANSAS



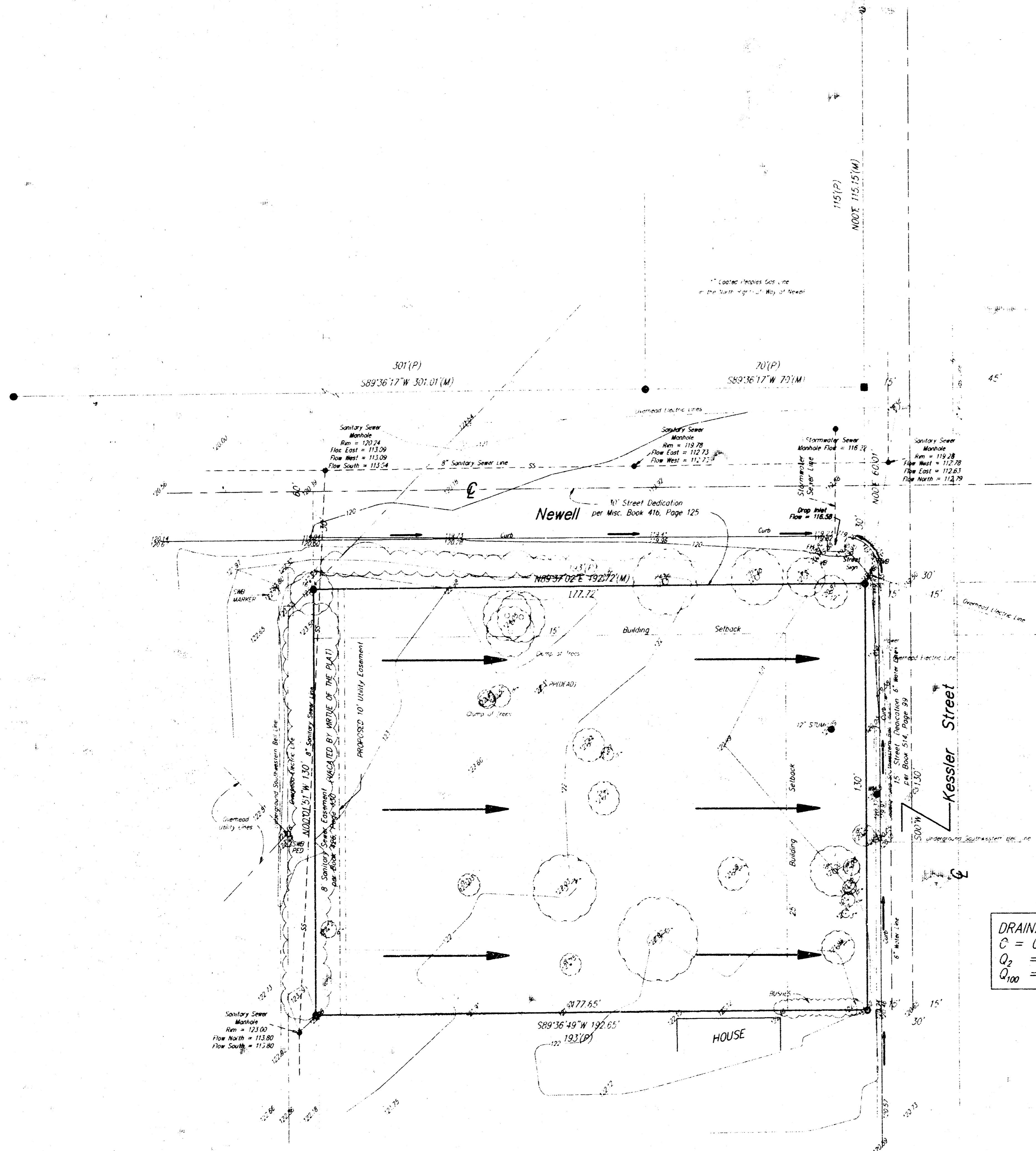
Contours @ 1' Intervals

- = 1/2" Iron Pipe Found
- = #4 Baughman Rebar Set
- = 3/4" Iron Pipe Found

**LEGAL**  
The north 50 feet of Lot 17, Except the north 30 feet for street, Knight Acres Addition, Wichita Sedgwick County, Kansas

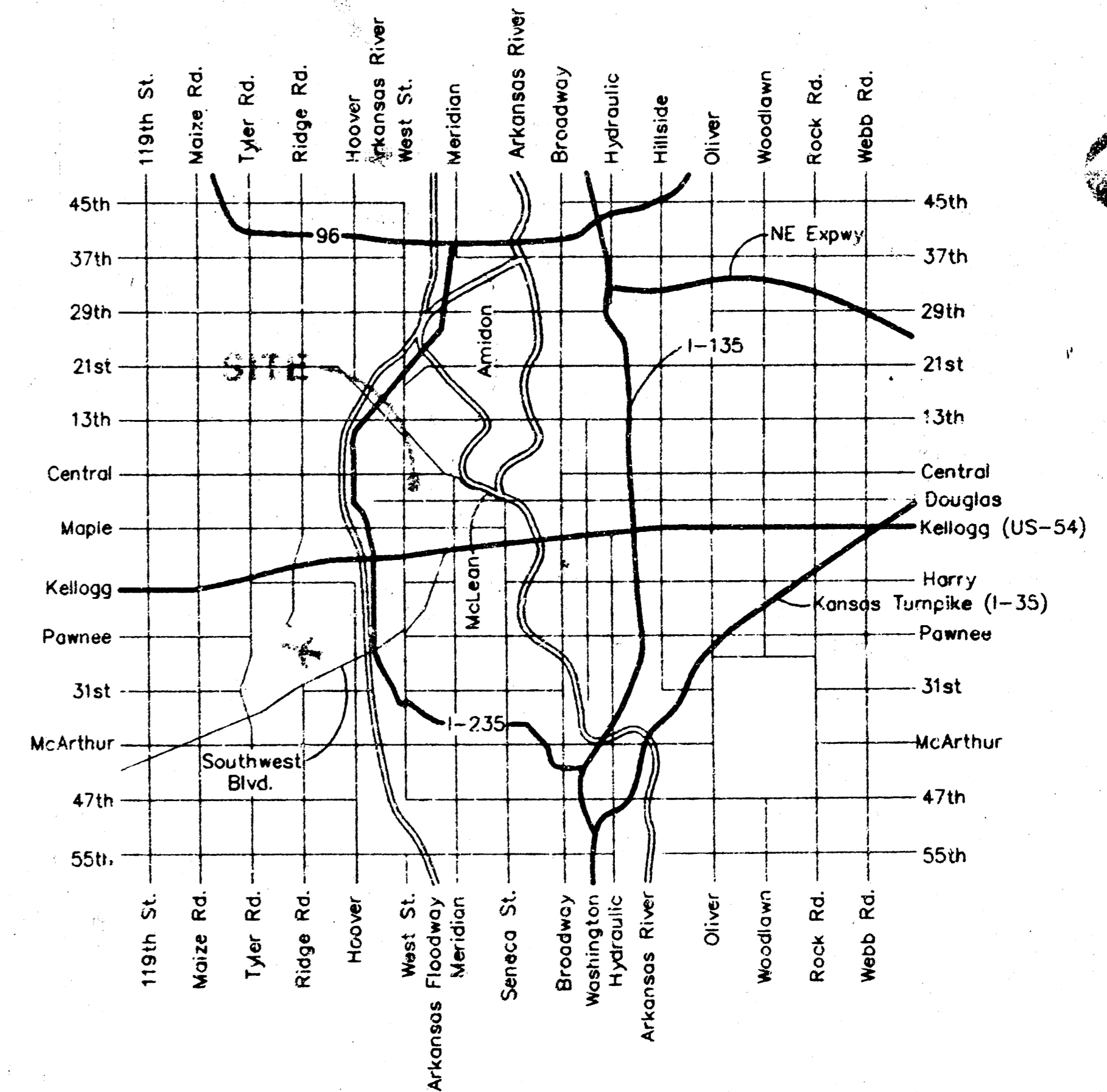
**BENCHMARK**  
"□" 50 feet north and 50 feet west of the intersection of Central and West Street. Elevation = 122.53

**OWNER**  
Calvin A. Borrer &  
Barbara J. Borrer  
4615 Del Sienna  
Wichita, KS. 67212  
(316)943-1539



**DRAINAGE AREA = 0.53 Ac.**  
 $C = 0.54$   
 $Q_2 = 1.1 \text{ cfs}$   
 $Q_{100} = 2.1 \text{ cfs}$

**NOTE:** The utility locations represented on this survey were compiled by both field observation and information from the various utility companies. If any construction or relocation is planned for this site the various utility companies should be requested to verify their locations in the field prior to final design or construction.



VICINITY MAP

August 21, 1995