

SEE BRIARWOOD 5TH ADDITION DRAINAGE PLAN

SEE BRIARWOOD 4TH ADD. DRAINAGE PLAN

D.W. Slope = 140.6 (1334.0 M.G.L.) (Cowskin Creek) per FEMA

**NOTES:**

BENCHMARK: CITY STD. BRASS CAP IN CONC. 25' N. & 30' E. OF S. 1/4 COR. SEC. 7, T27S, R1W. ELEV. 1345.33 M.S.L.

SETBACKS AND RESERVES SHALL MEET REQUIREMENTS AS SET FORTH UNDER BRIARWOOD ESTATES C.U.P. DP-136 GENERAL PROVISIONS.

RESERVES "A" & "B" SHALL PERMIT DRAINAGE, UTILITIES CONFINED TO EASEMENTS, LANDSCAPING, PRIVATE ACCESS AND RECREATIONAL FACILITIES.

DRAINAGE CONCEPT PLAN SHALL BE PREPARED AND SUBMITTED BY PROFESSIONAL ENGINEERING CONSULTANTS.

MINIMUM PAD ELEVATIONS FOR ALL LOTS SHALL BE 1335.00 M.S.L.

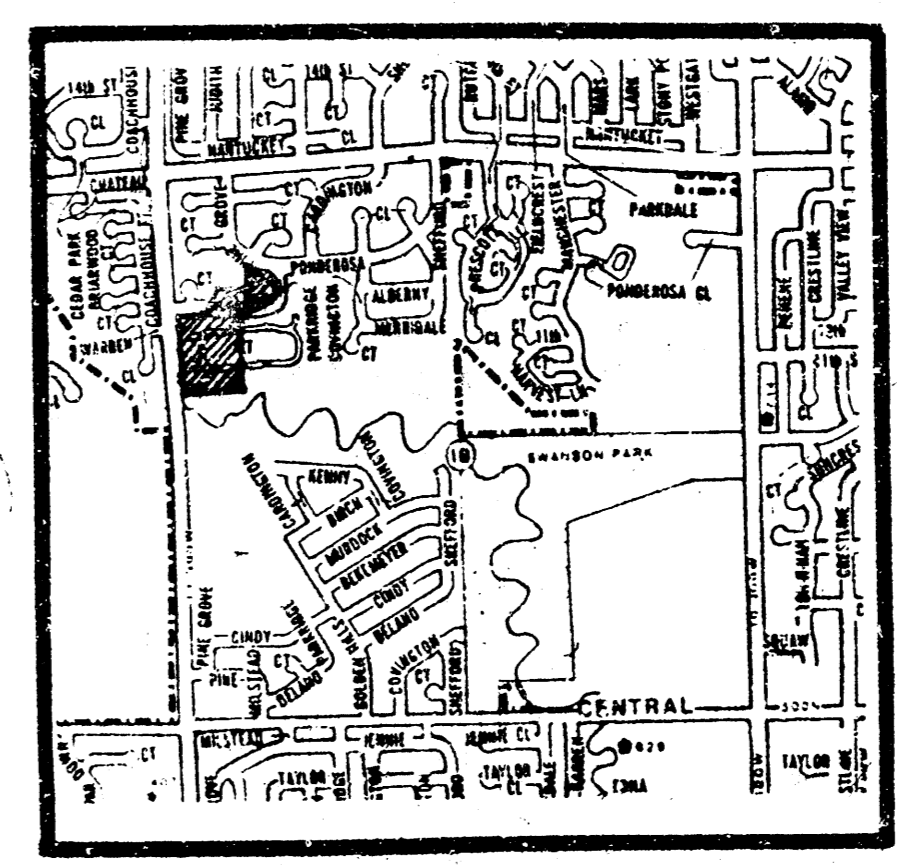
**LEGEND**

- Drainage Direction - Minor storm
- ⇨ Drainage Direction - Major storm
- Proposed Storm Water Sewer & Inlet
- ▬ Drainage Basin Boundary
- 140.2 Estimated top of Curb Elevation
- ⊙ Node Identification Point

Note: Contours shown are based on original aerial photography performed in March 1980. Area has subsequently been filled to proper elevation so that area has been removed from FEMA floodplain.



SCALE: 1" = 100'



LOCATION MAP

**DRAINAGE PLAN** 11-27-01  
**PRELIMINARY PLAT (REPLAT OF A PORTION OF BRIARWOOD ESTATES 4TH & 5TH ADDITIONS)**

**BRIARWOOD ESTATES 6TH ADDITION**

OWNER: SLAWSON INVESTMENT COMPANY, INC., 104 S. BROADWAY, WICHITA, KANSAS, 67202 PH: 263-3201

PROFESSIONAL ENGINEERING CONSULTANTS, P.A.  
 ENGINEERS  
 WICHITA, KANSAS  
 Job No. \_\_\_\_\_ Date \_\_\_\_\_  
 Drawn by \_\_\_\_\_  
 Checked by \_\_\_\_\_

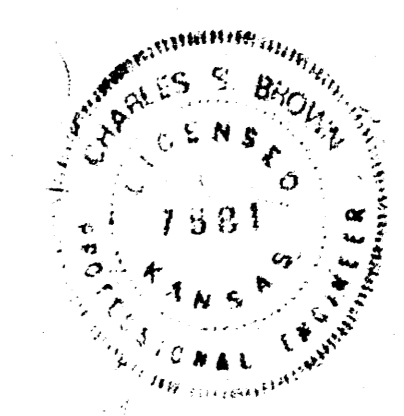


**BILL G. YUNG DESIGN**  
 4012 S. 20TH STREET, WICHITA, KS 67220  
 316-263-5457

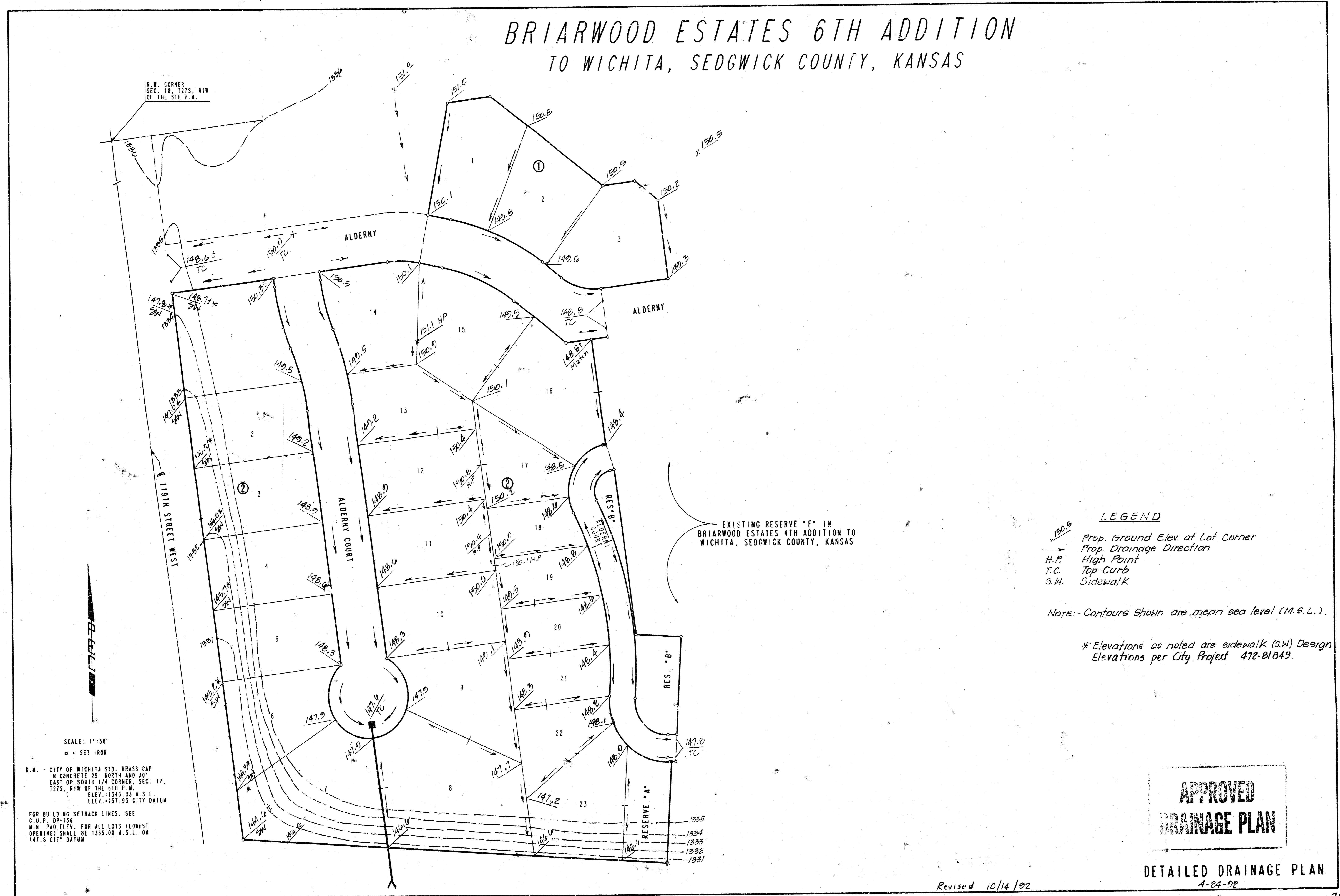
DATE: 11-27-01  
 REV: \_\_\_\_\_

SHEET TITLE: BRIARWOOD ESTATES 6TH ADDITION DRAINAGE PLAN

PROJECT: \_\_\_\_\_  
 SHEET: \_\_\_\_\_ OF \_\_\_\_\_



# BRIARWOOD ESTATES 6TH ADDITION TO WICHITA, SEDGWICK COUNTY, KANSAS



**LEGEND**

- Prop. Ground Elev. at Lot Corner
- Prop. Drainage Direction
- H.P. High Point
- T.C. Top Curb
- S.W. Sidewalk

Note: - Contours shown are mean sea level (M.S.L.).

\* Elevations as noted are sidewalk (S.W.) Design Elevations per City Project 472-81849.

SCALE: 1"=50'  
 ○ = SET IRON

B.M. - CITY OF WICHITA STD. BRASS CAP IN CONCRETE 25' NORTH AND 30' EAST OF SOUTH 1/4 CORNER, SEC. 17, T27S, R1W OF THE 6TH P.W. ELEV. +1345.33 M.S.L. ELEV. +157.93 CITY DATUM

FOR BUILDING SETBACK LINES, SEE C.U.P. DP-136 MIN. PAD ELEV. FOR ALL LOTS (LOWEST OPENING) SHALL BE 1335.00 M.S.L. OR 147.8 CITY DATUM

EXISTING RESERVE "F" IN BRIARWOOD ESTATES 4TH ADDITION TO WICHITA, SEDGWICK COUNTY, KANSAS

**APPROVED  
DRAINAGE PLAN**

DETAILED DRAINAGE PLAN  
A-24-02

Revised 10/14/02