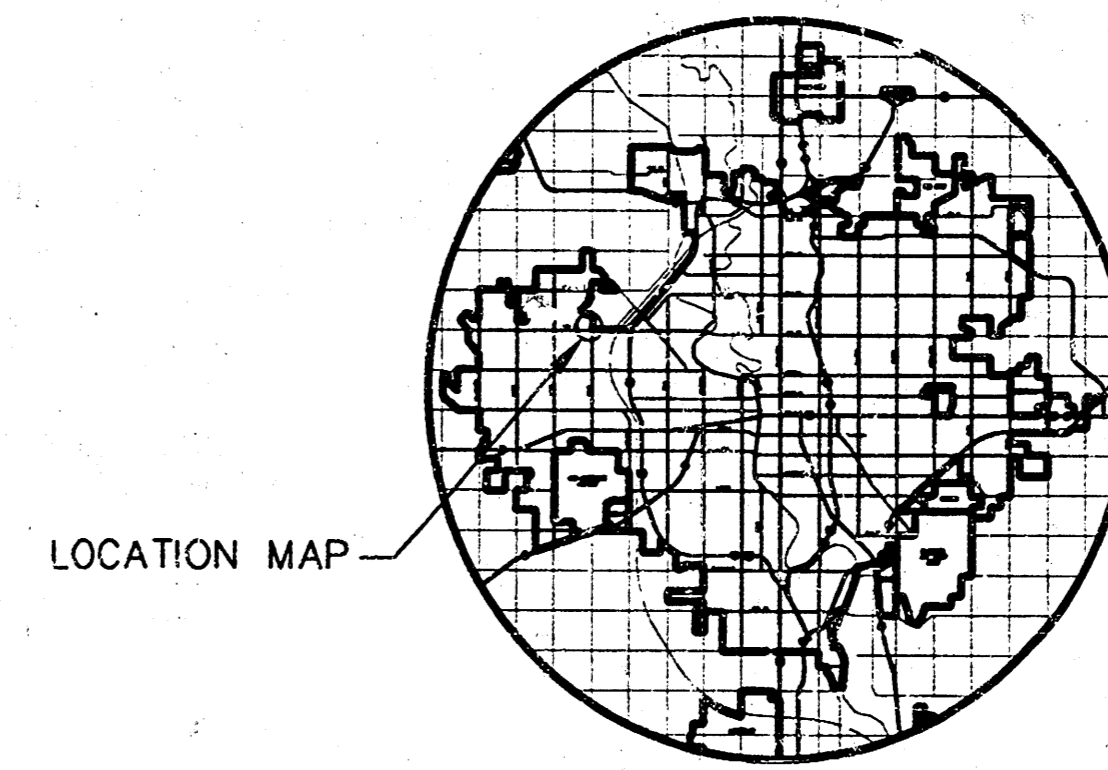
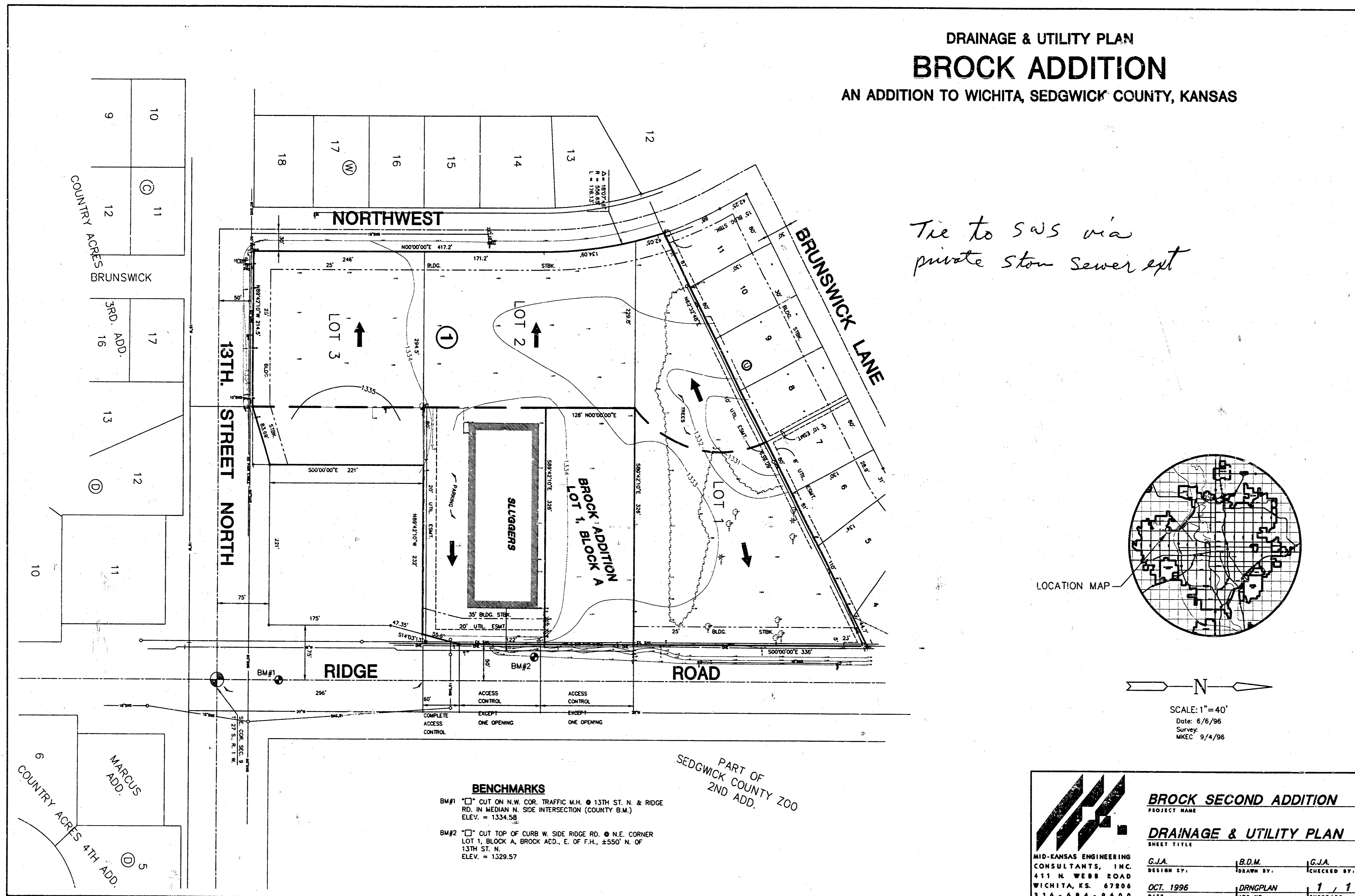


**DRAINAGE & UTILITY PLAN**  
**BROCK ADDITION**  
 AN ADDITION TO WICHITA, SEDGWICK COUNTY, KANSAS

*Tie to SWS via  
private stone sewer ext*



SCALE: 1" = 40'  
 Date: 6/5/96  
 Survey: MKEC 9/4/96

**BENCHMARKS**  
 BM#1 "□" CUT ON N.W. COR. TRAFFIC M.H. @ 13TH ST. N. & RIDGE RD. IN MEDIAN N. SIDE INTERSECTION (COUNTY B.M.)  
 ELEV. = 1334.58  
 BM#2 "□" CUT TOP OF CURB W. SIDE RIDGE RD. @ N.E. CORNER LOT 1, BLOCK A, BROCK ADD., E. OF F.H. #3507 N. OF 13TH ST. N.  
 ELEV. = 1329.57

PART OF  
 SEDGWICK COUNTY ZOO  
 2ND ADD.

	<b>BROCK SECOND ADDITION</b>		
	PROJECT NAME		
	<b>DRAINAGE &amp; UTILITY PLAN</b>		
	SHEET TITLE		
MID-KANSAS ENGINEERING CONSULTANTS, INC. 411 N. WEBB ROAD WICHITA, KS. 67206 316-684-9600	G.J.A. DESIGN BY.	B.D.M. DRAWN BY.	G.J.A. CHECKED BY.
OCT. 1996 DATE	DRNGPLAN JOB NO.	1 / 1 SHEET/DT	