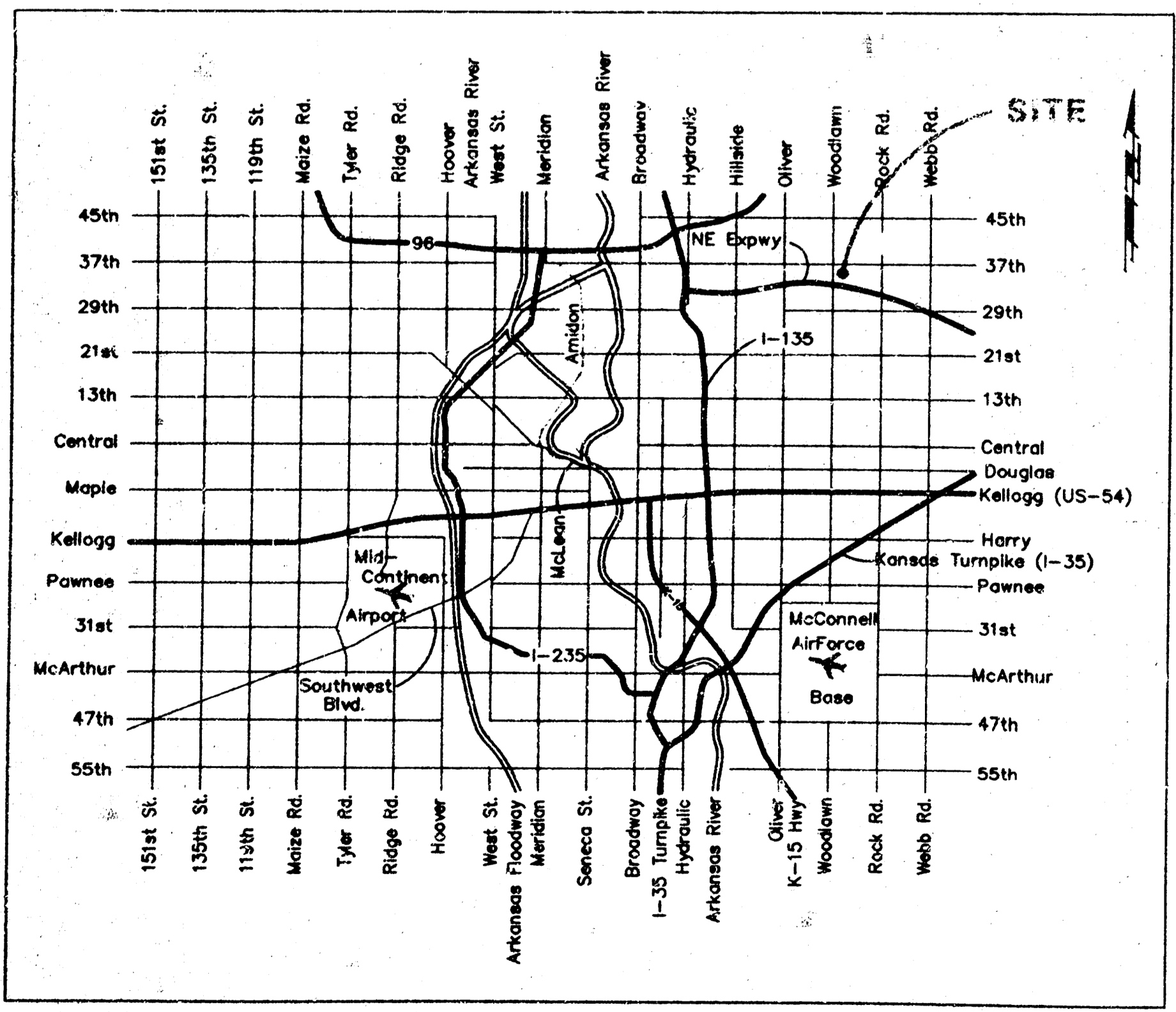
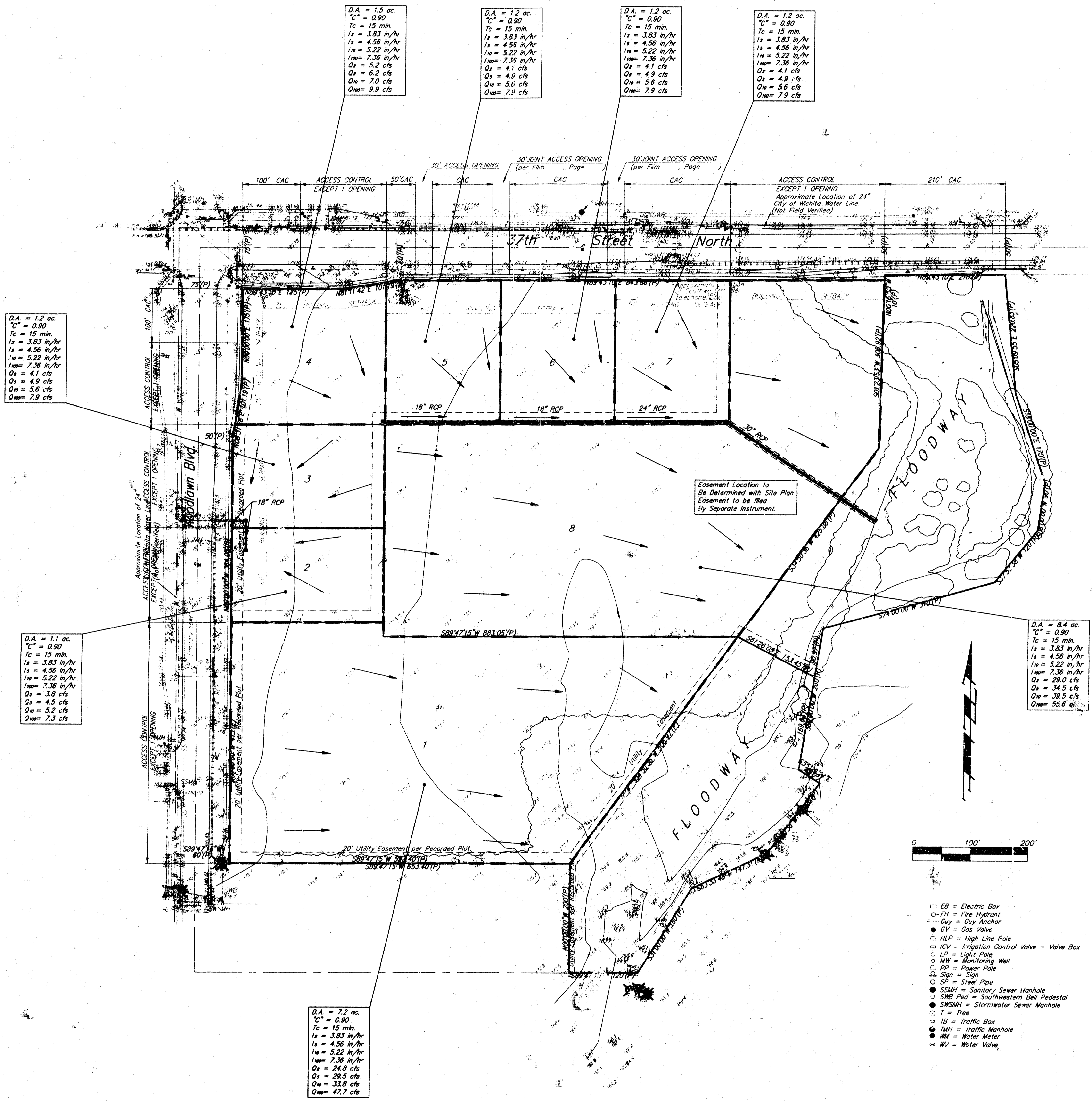


DRAINAGE PLAN

BRUSHCREEK 2ND ADDITION

WICHITA, SEDGWICK COUNTY, KANSAS



SITE LOCATION MAP

| LOT | MINIMUM BUILDING PAD ELEVATIONS FOR LOWEST OPENING TO THE STRUCTURES | |
|-----|--|--------|
| | (CITY DATUM) | M.S.L. |
| 1 | 175.0 | 1362.4 |
| 8 | 176.0 | 1363.4 |

- EB = Electric Box
- EH = Fire Hydrant
- GA = Guy Anchor
- GV = Gas Valve
- HLP = High Line Pole
- ICV = Irrigation Control Valve - Valve Box
- LP = Light Pole
- MW = Monitoring Well
- PS = Power Pole
- SP = Sign
- SP = Steel Pipe
- SSM = Sanitary Sewer Manhole
- SWE Ped = Southwestern Bell Pedestal
- SSM = Stormwater Sewer Manhole
- T = Tree
- TB = Traffic Box
- TM = Traffic Manhole
- WM = Water Meter
- WV = Water Valve

BENCHMARK:
CITY OF WICHITA DISC - SOUTHEAST CORNER OF THE INTERSECTION OF THE C. OF WOODLAWN AVE. AND THE E. OF 37TH ST. NORTH ELEVATION = 183.04 (CITY DATUM)

NOTE: The proposed drainage plan provided herein is a generally defined plan to follow for design. It is recognized and assumed that upon the final design of street and storm sewer improvements within the project the designer will modify or alter the general drainage plan as necessary in order to implement the installation of the improvements to obtain the most economical design and construction possible.