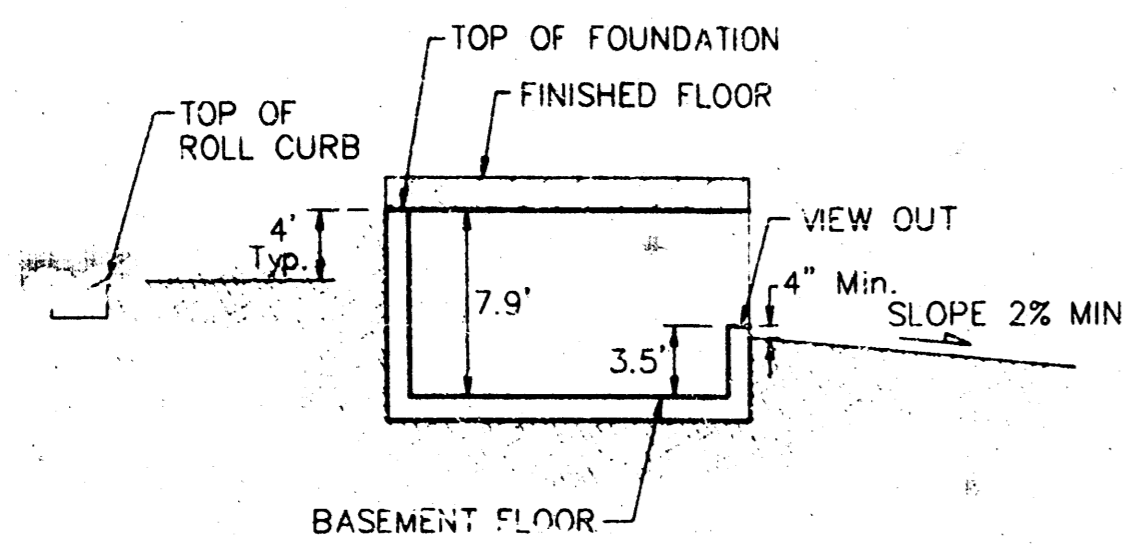


NOTE:
 Proposed Top of Foundation elevations are shown on plans.
 Contractor to set garage floor elevation.
 All street elevations shown on plans are for top of curb (full height).



TYPICAL VIEW OUT
 NO SCALE

NOTE:
 Lots 1 & 2, Block A, and Lots 1 - 3, Block B are to be elevated 3' from T.C. to top foundation. All other lots on this sheet are typical 4'.

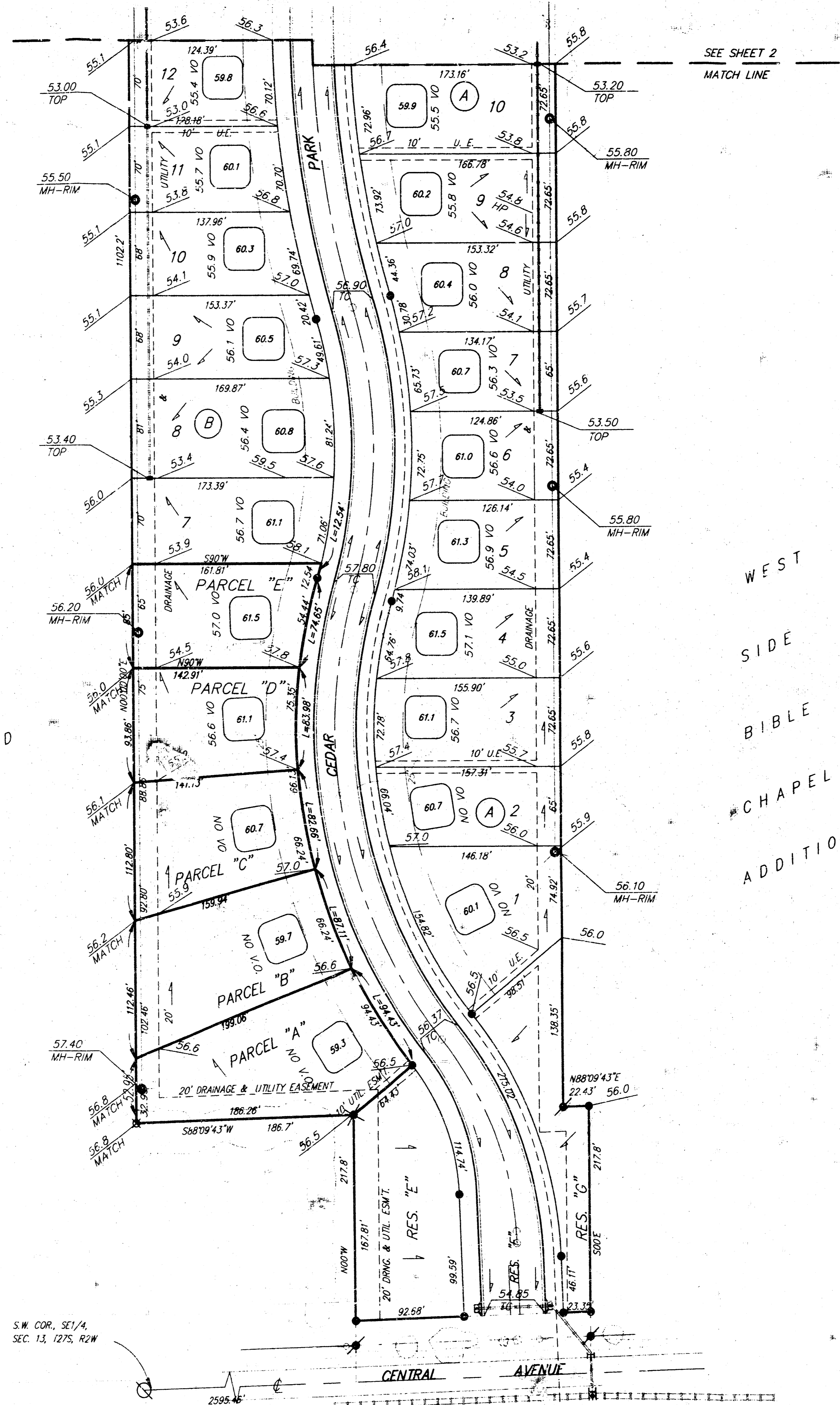
MINIMUM BUILDING PAD ELEVATIONS FOR LOWEST OPENING OF STRUCTURE

Lots	Block	Elevation	
		M.S.L.	City Datum
16-19	B	1339.40	152.00
1-5	C	1339.40	152.00
1-17	D	1336.40	149.00
1-7	E	1336.40	149.00
11	E	1336.40	149.00

BENCHMARK:
 119TH ST. W. & CENTRAL, CITY DISC. 40' E & 46' S
 OF C BOTH. ELEV = 156.93 CITY DATUM
 (1344.33 M.S.L.)

"T" CUT - TOP OF CURB, N. SIDE OF HICKORY ST.
 56.5' EAST OF C 119TH ST. W.
 ELEV. = 158.97 CITY DATUM
 (1346.37 M.S.L.)

UNPLATTED



BUCKHEAD ADDITION
LOT GRADING PLAN
 BAUGHMAN COMPANY P.A.
 ENGINEERING, SURVEYING, & PLANNING
 314-282-7271 • 315 ELLIS • WICHITA, KANSAS 67211
 PROJECT NUMBER: _____ SHEET **3** OF **8**
 DESIGN: _____ DRAWN: BAW APPROVED: _____ DATE: 7-7-95 SCALE: 1"=60'

REVISED 8-21-97
 REVISED 1-31-96
 REVISED 3-14-96