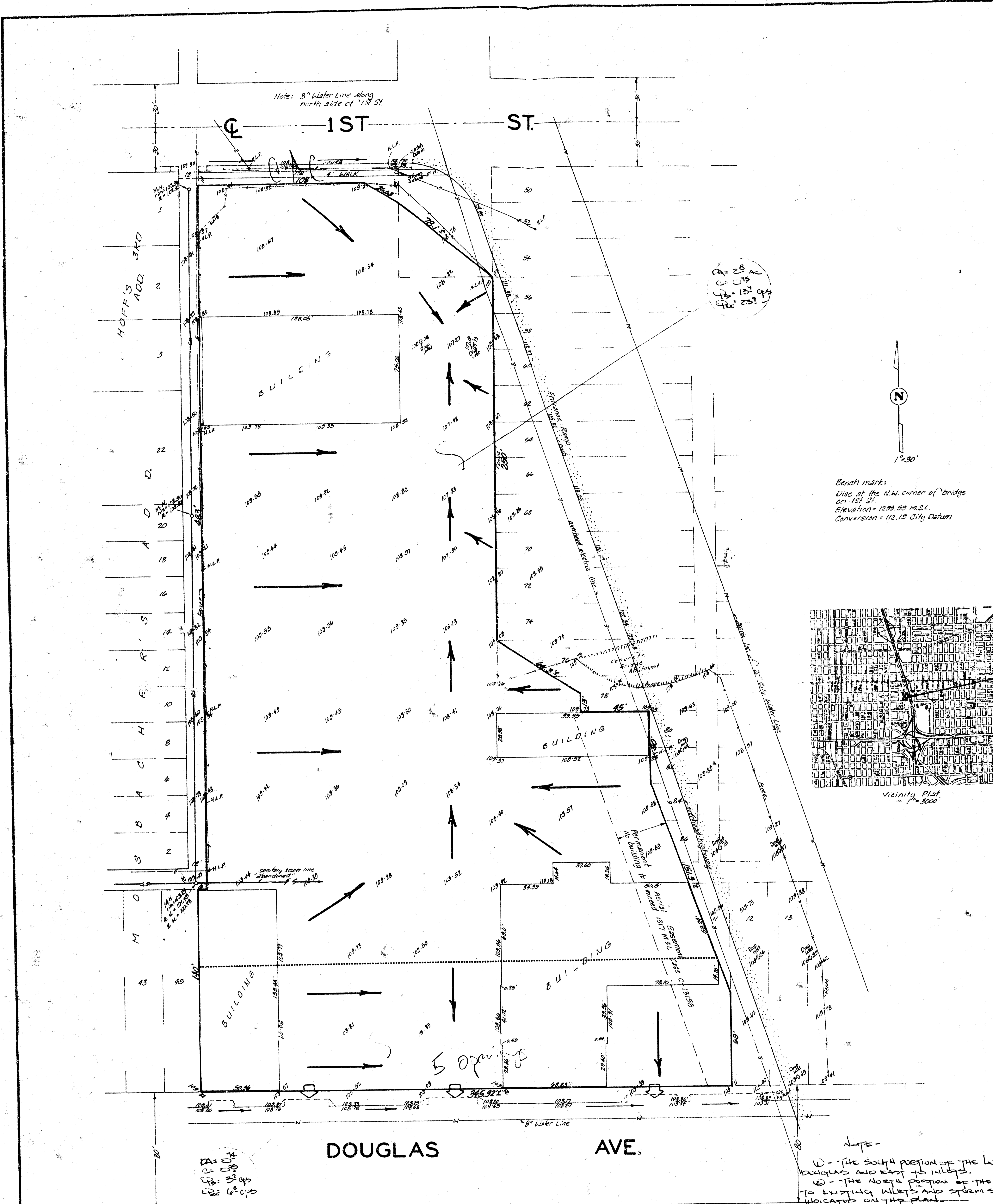


FILMED FROM THE BEST AVAILABLE COPY



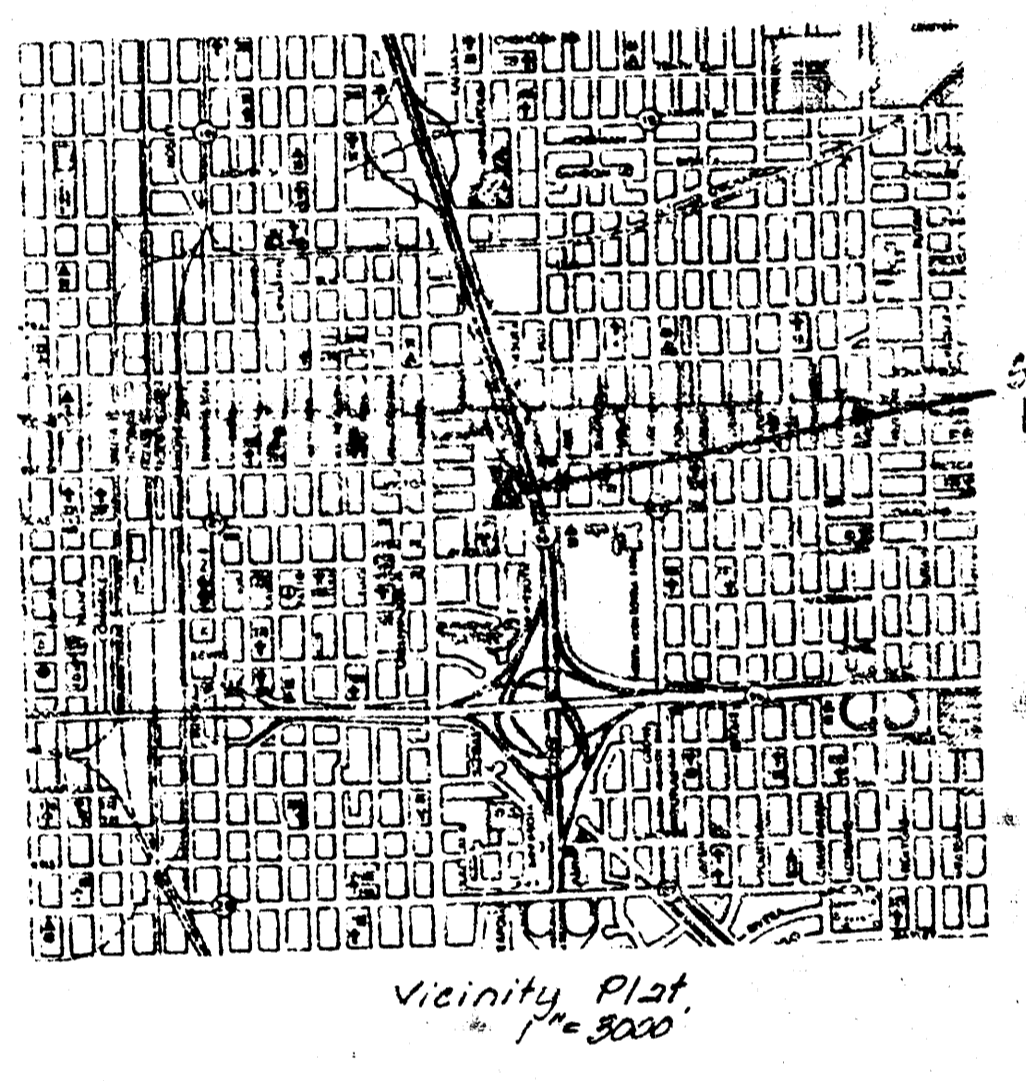
BULGER ADDITION (Drainage)

Note: 8" Water Line along north side of 1st St.

Handwritten notes: 28, 0.75, 13.5, 25.5



Bench mark: Disc at the N.W. corner of Bridge on 1st St. Elevation = 1299.59 M.S.L. Conversion = 112.19 City Datum



Handwritten notes: 28, 0.75, 13.5, 25.5

NOTE - 1 - THE SOUTH PORTION OF THE LOT DRAINS TO DOUGLAS AND EAST TO ALLEY. 2 - THE NORTH PORTION OF THE LOT DRAINS TO EXISTING ALLEYS AND STORM SEWER AS INDICATED ON THE PLAN.

PRELIMINARY PLAT BULGER ADDITION

A REPLAT OF LOTS 1-2-3-4-5, BLOCK 4, & LOTS 6-7-8-9 & PART OF 10 & 11, BLOCK 5, & LOTS 49-51-53-55-57-59-61-63-65-67-69-71-73-75-77-79-81-83-85, BLOCK 7, & PART OF LOTS 76-78-80-82-84-86, BLOCK 5, & VACATED MINNEAPOLIS AVE & ALLEYS ALL IN MINNEAPOLIS ADDITION TO WICHITA, SEDGWICK COUNTY, KANSAS.

OWNER: JOSEPH A. BULGER

FINAL DRAINAGE PLAN

4/16/14

BAUGHMAN COMPANY, P.A. SURVEYING & ENGINEERING 316-762-7271 • 330 LAURA • WICHITA, KANSAS 67211