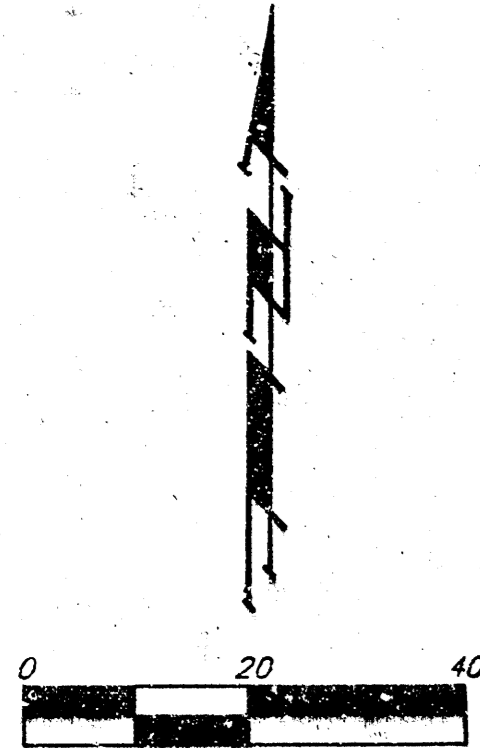
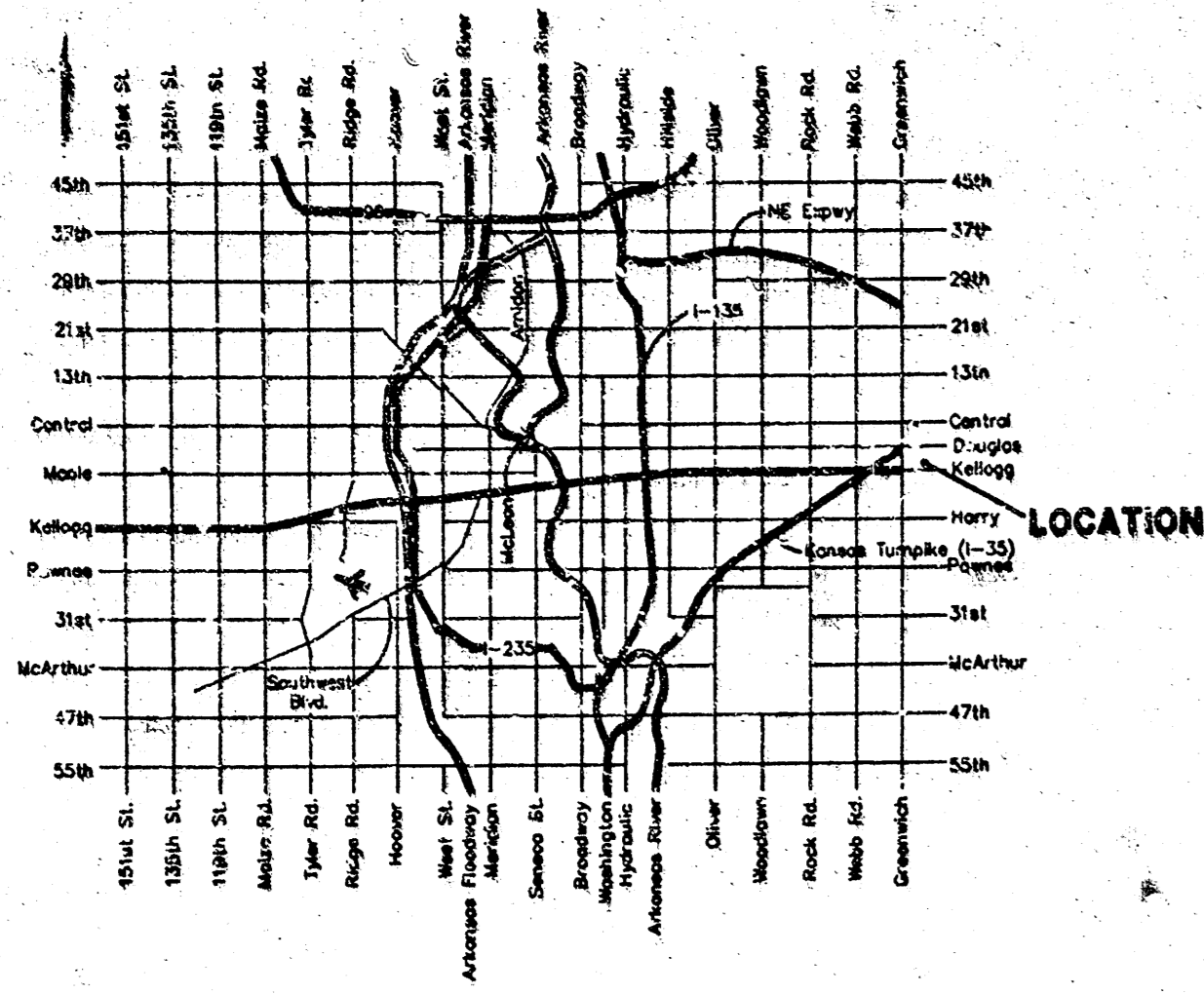


DRAINAGE PLAN

C. J. J. 2ND ADDITION

WICHITA, SEDGWICK COUNTY, KANSAS

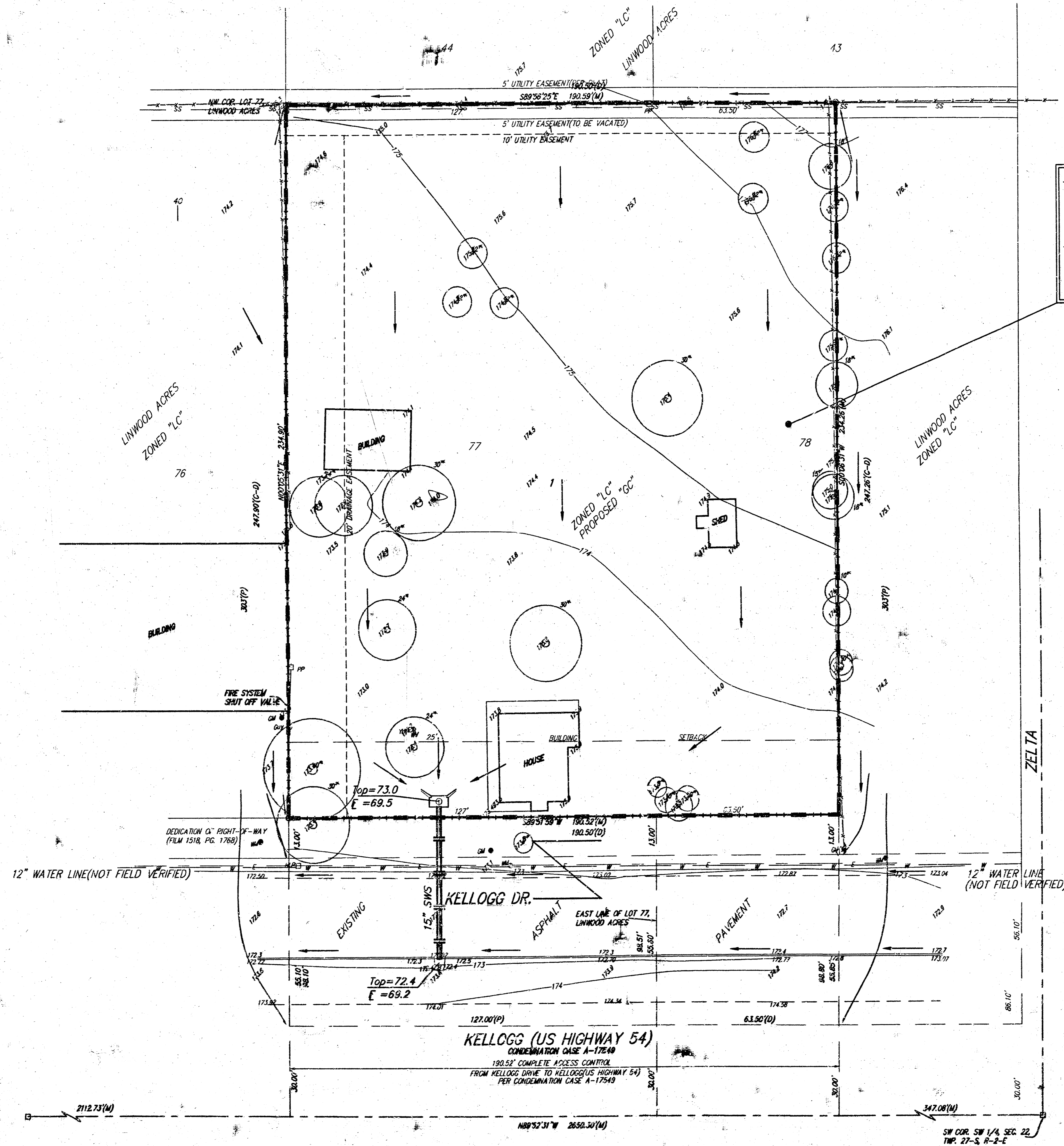


OWNER:
 Larnard E. Smith
 14401 Laguna, Dr.
 Wichita, KS 67230
 Ph: (316) 685-1244

LEGAL DESCRIPTION:
 A replat of Lot 77, together with the west half of Lot 78, Linwood Acres, Sedgwick County, Kansas, EXCEPT that part condemned for US highway 54 (A-17549).

BENCHMARK:
 □ cut back of curb north side of Kellogg Dr., south of southeast cor.
 Elev. = 172.77

- = #4 REBAR W/ "DAUGHMAN" CAP (SET)
- ⊗ = #4 REBAR W/ "368" CAP (FOUND)
- ⊗ = 3/4" IRON (FOUND)
- ⊗ = 1/2" IRON (FOUND)
- = TRIMBLE (FOUND)
- CB = Catch Basin
- GM = Gas Meter
- HLP = High Line Pole
- PP = Power Pole
- SP = Sign
- SWB Ped = Southwestern Bell Pedestal
- T = Tree
- WM = Water Meter
- WV = Water Valve
- HY = Yard Hydrant (Spigot)



Existing Conditions
 D.A. = 1.0 ac.
 TC = 15 min.
 Q_s = 2.1 cfs
 Q₁₀₀ = 5.2 cfs

Developed Conditions
 D.A. = 1.0 ac.
 TC = 15 min.
 Q_s = 3.9 cfs
 Q₁₀₀ = 6.7 cfs

KELLOGG (US HIGHWAY 54)
 CONDEMNATION CASE A-17549
 190.52' COMPLETE ACCESS CONTROL
 FROM KELLOGG DRIVE TO KELLOGG'S HIGHWAY 54
 PER CONDEMNATION CASE A-17549

SW COR. SW 1/4, SEC. 22,
 TWP. 27-S, R-2-E