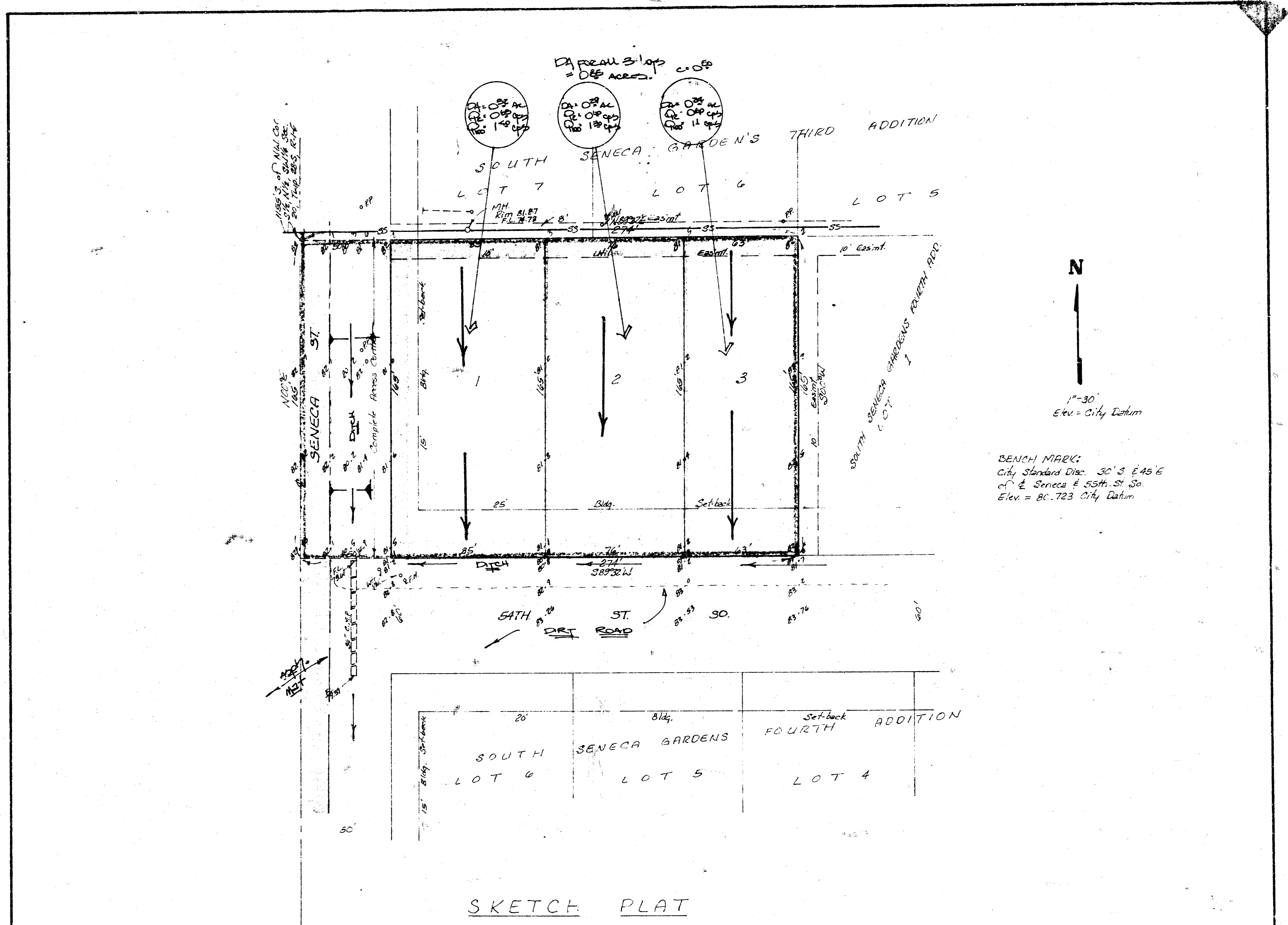


CAROL ADDITION
(Drainage)



SKETCH PLAT
CAROL ADDITION

Drainage Notes
The 3 residential lots (approximately 0.20 acres in size) will drain south to 54th St. So. which is unpaved at this time. 54th St. So. drains west to the Seneca ditch which drains south. An adequate ditch section along the north side of 54th St. will be maintained to insure proper drainage to Seneca. No drainage requirements needs to be provided by this plat.

TRACT IN THE SW 1/4 OF SEC. 20, TWP. 28-S, R-1-E OF THE 6TH 1 M., SEDGWICK COUNTY, KANSAS.

WADLEY HOME'S, INC.
WARREN OLIVANE WADLEY, PRES.

DRAINAGE PLAN 1-21-05

BAUGHMAN COMPANY, P.A.
SURVEYING & ENGINEERING
316-262-7271 • 330 LAURA • WICHITA, KANSAS 67211

FILMED FROM THE BEST AVAILABLE COPY ...