

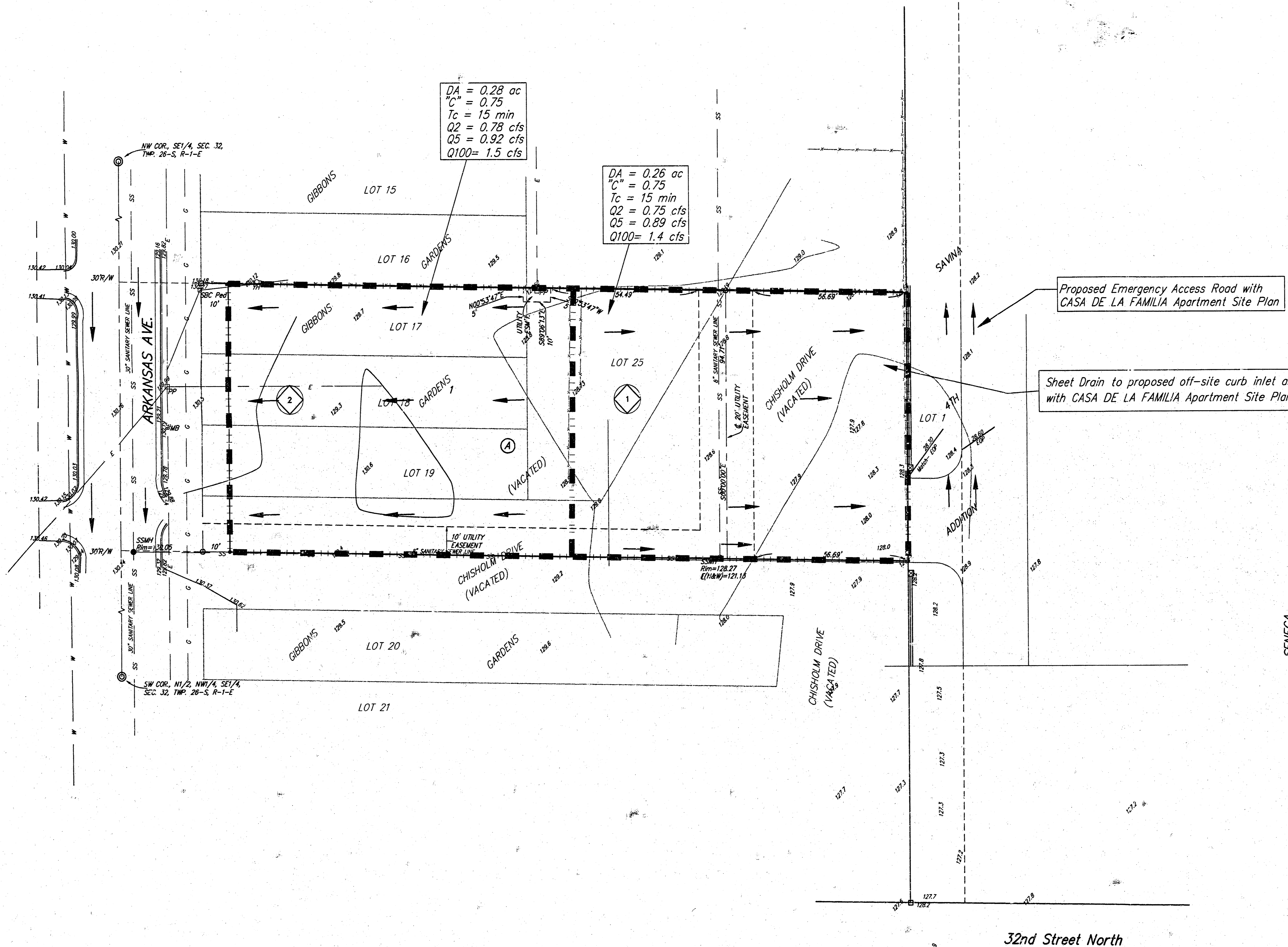
# DRAINAGE PLAN CASA DE LA FAMILIA ADDITION WICHITA, SEDGWICK COUNTY, KANSAS

0 20 40

CONTOUR INTERVAL = 1 FT.  
DATE OF TOPOGRAPHY = 25 JULY 2003

\* = #4 REBAR W/ "DAUGHMAN" CAP (SET)  
 ○ = 1/2" IRON (FOUND)  
 □ = 3/4" IRON (FOUND)  
 ⊗ = #6 REBAR (FOUND)  
 ⊙ = 1/2" IRON W/ THIMBLE (FOUND)

BENCHMARK:  
ARKANSAS & 35TH ST. N. -  
CITY OF WICHITA BENCHMARK DISC  
47' N. OF E  
24' N. OF E  
ELEV. = 130.21 CITY DATUM



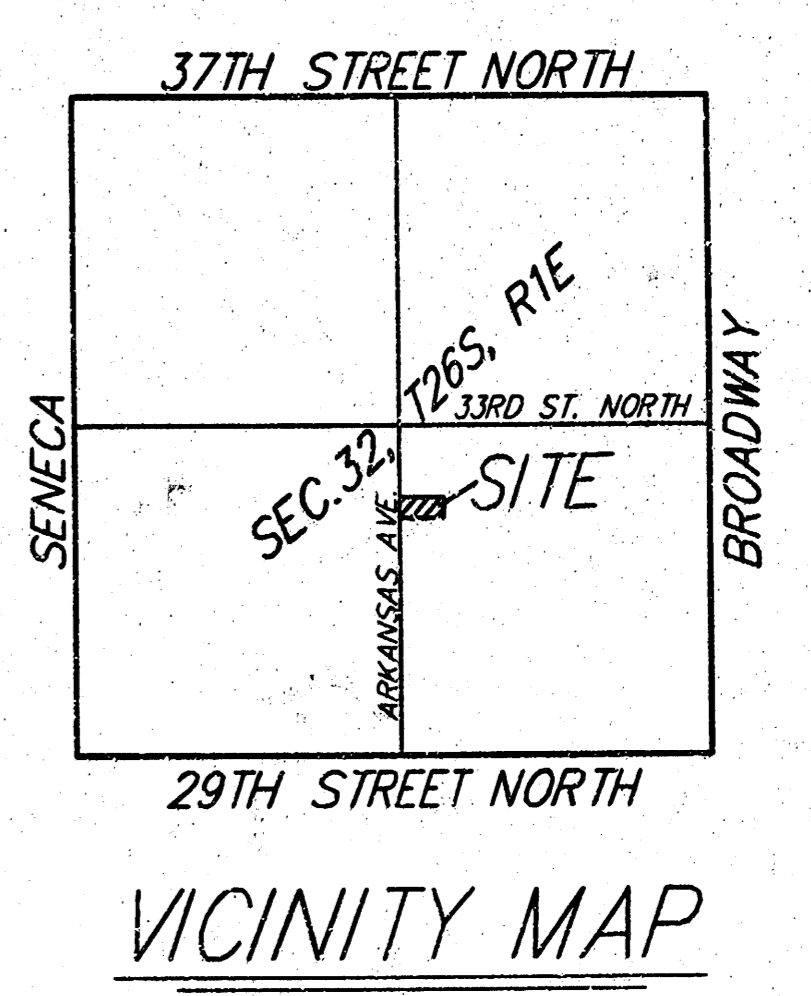
□ SBC Ped = SBC Pedestal  
 ⊗ YH = Yard Hydrant (Spigot)

**DRAINAGE LEGEND:**

⊗ = Basin I.D.  
 → = Property Flow  
 - - - = Basin Delimitation

Proposed Emergency Access Road with  
CASA DE LA FAMILIA Apartment Site Plan

Sheet Drain to proposed off-site curb inlet associated  
with CASA DE LA FAMILIA Apartment Site Plan



REVISED NOVEMBER 14, 2003  
OCTOBER 27, 2003

**BAUGHMAN COMPANY P. A.**  
ENGINEERING, SURVEYING, & PLANNING  
316-282-7211 • 918 ELLIS • WICHITA, KANSAS 67211  
7 WOOD PROJECTS/Casa de La Familia/CASA DE LA FAMILIA