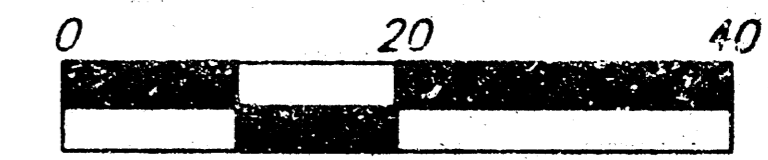


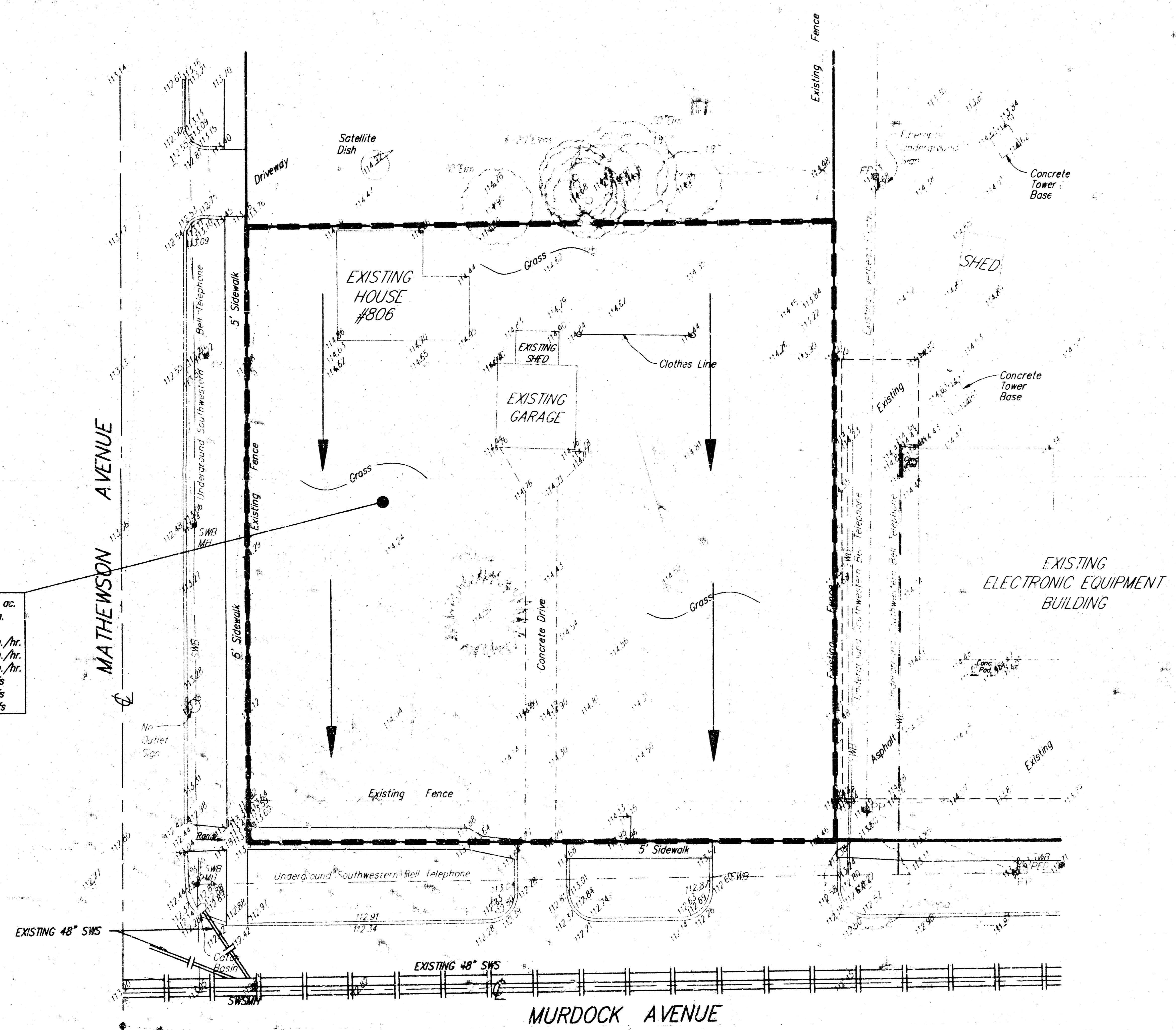
DRAINAGE PLAN

CELLULARONE

WICHITA, SEDGWICK COUNTY, KANSAS



D.A. = 0.45 ac.
 Tc = 15 min.
 C_s = 0.80
 I₁ = 3.83 in./hr.
 I₂ = 4.56 in./hr.
 I₃ = 7.36 in./hr.
 Q₁ = 1.4 cfs
 Q₂ = 1.9 cfs
 Q₃ = 2.6 cfs



LEGEND:

- WATER VALVE
- WATER METER
- CLEAN OUT
- POWER POLE
- SOUTHWESTERN BELL MANHOLE
- SANITARY SEWER MANHOLE
- GAS METER
- TREES

14 AUGUST 1997

BAUGHMAN COMPANY P. A.
 ENGINEERING, SURVEYING, & PLANNING
316-262-7271 • 315 ELLIS • WICHITA, KANSAS 67211