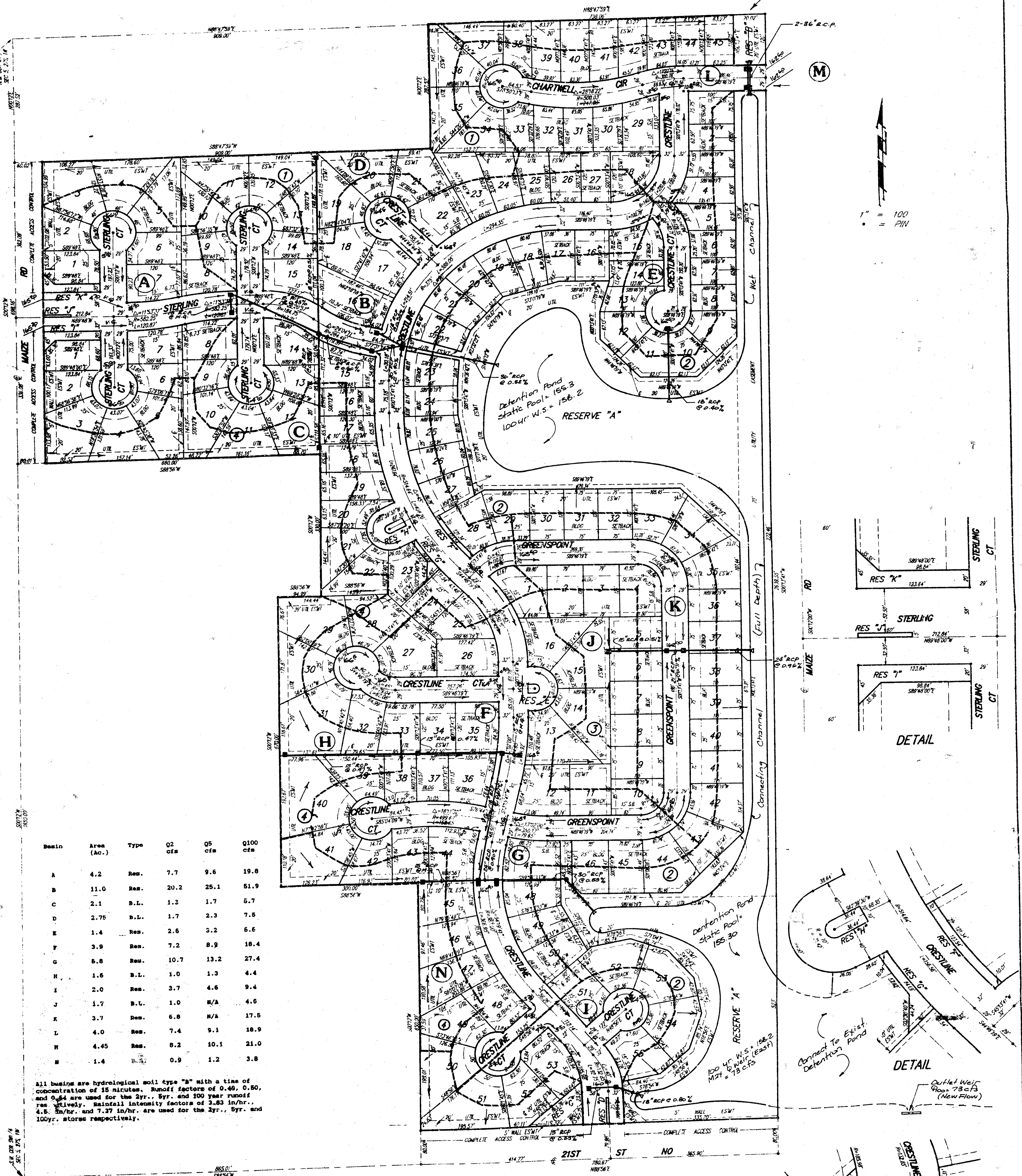


# CHADSWORTH 2ND ADDITION

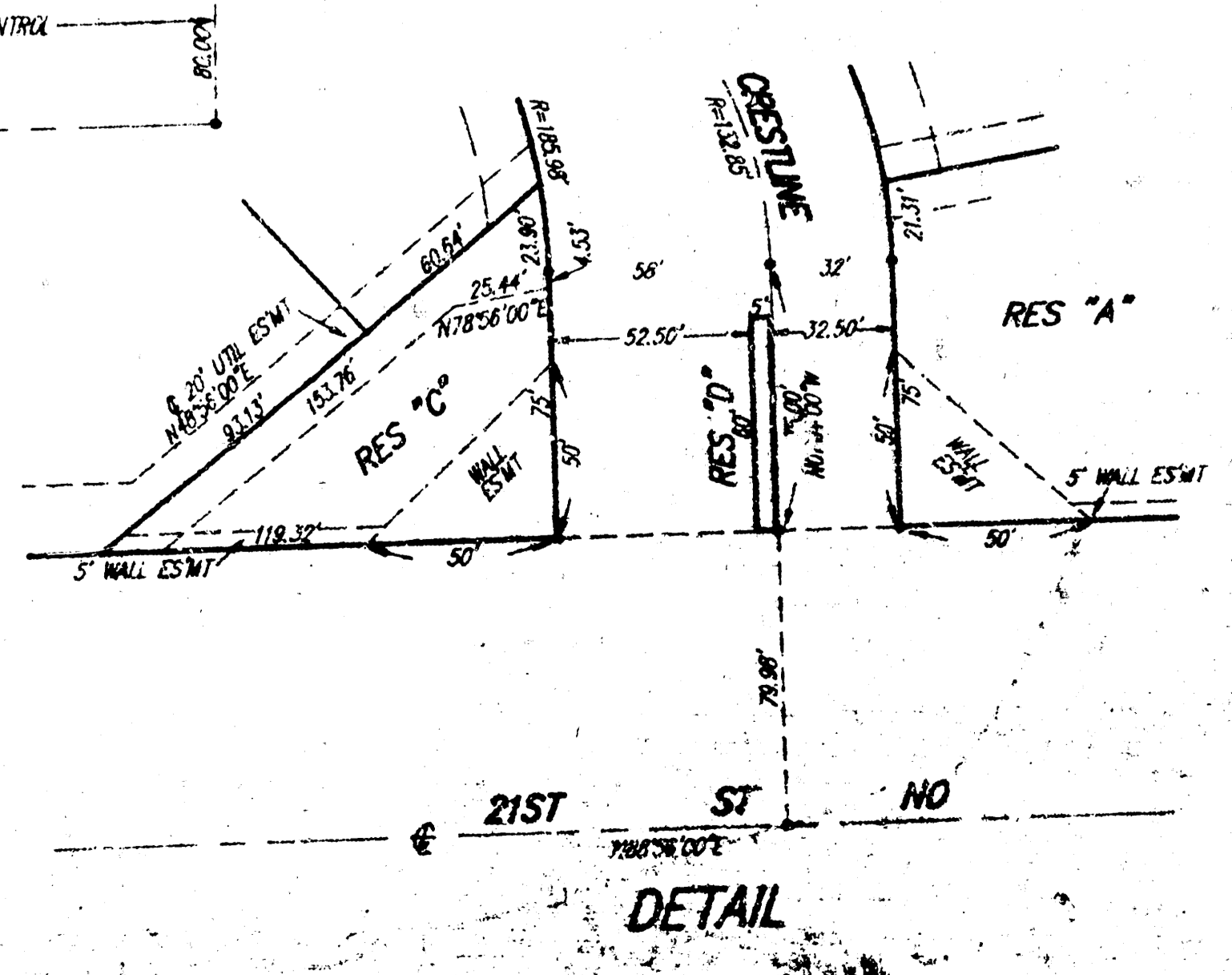
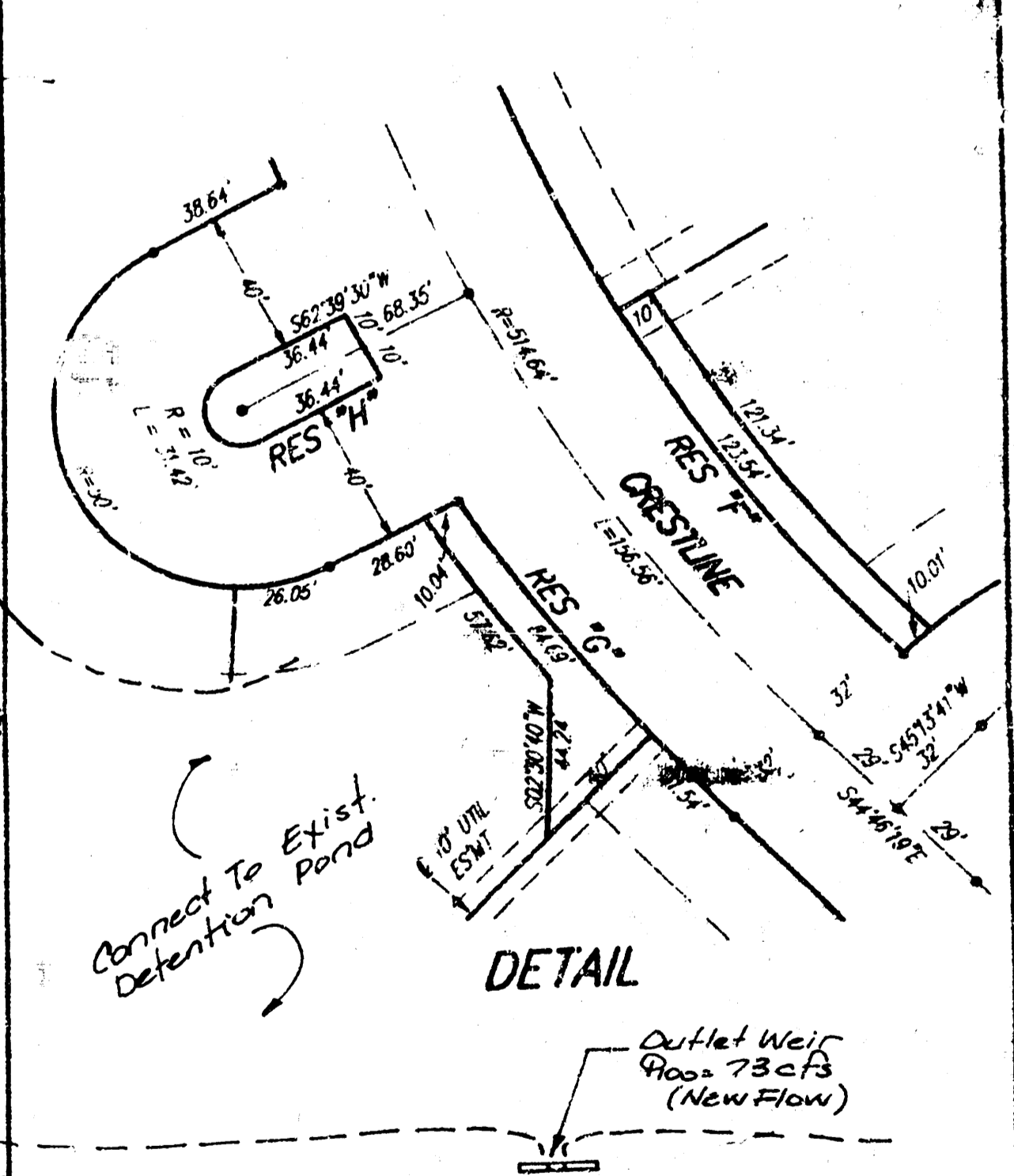
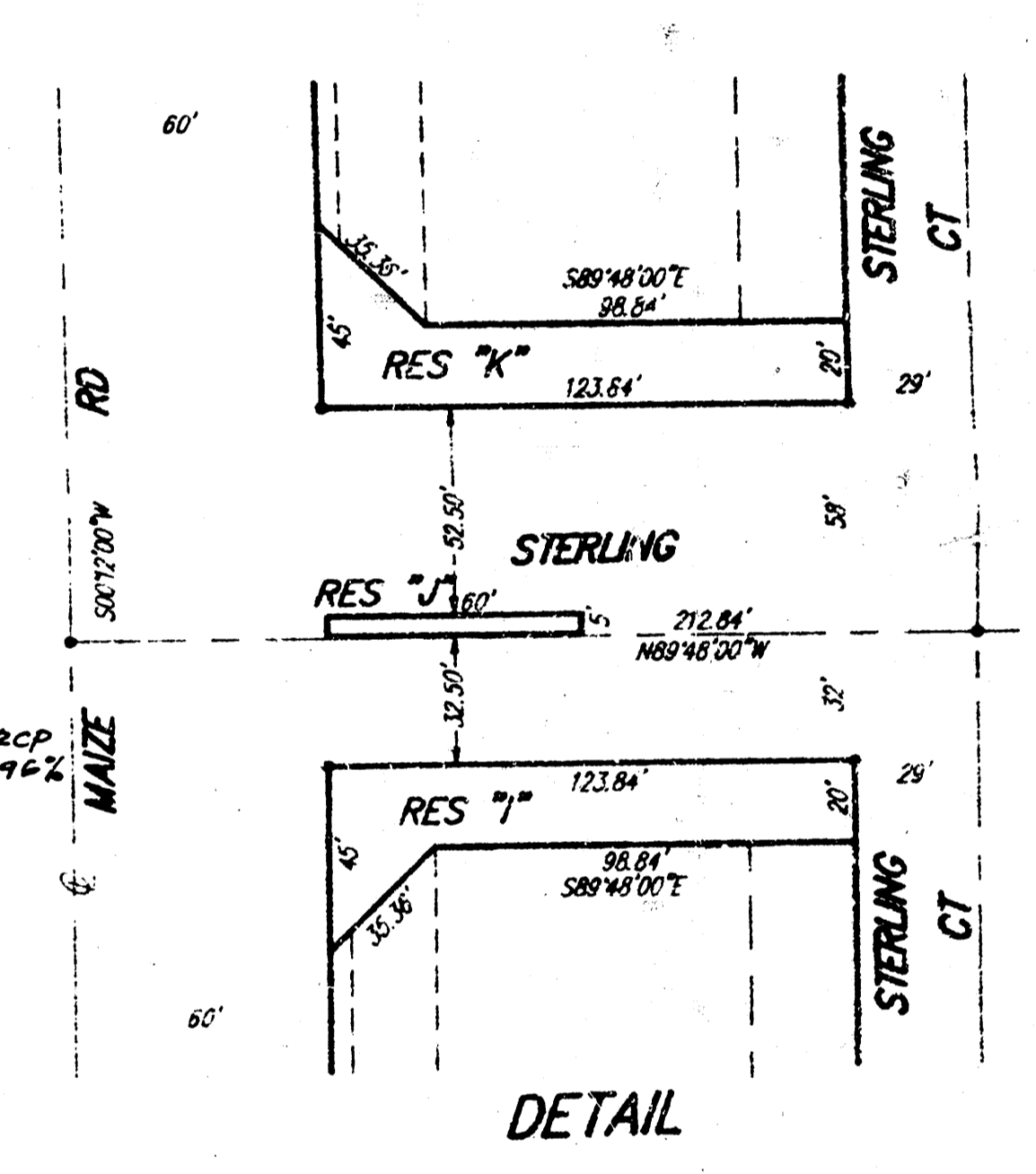
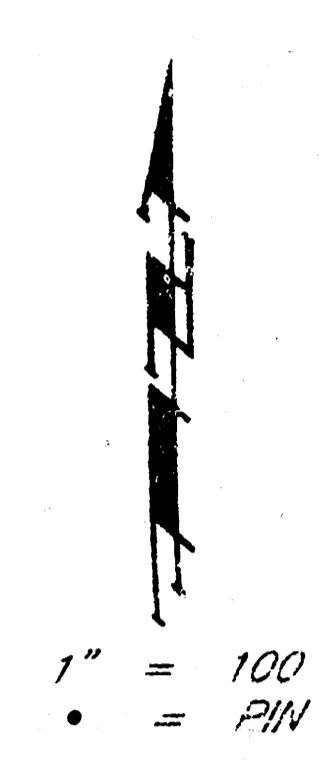
WICHITA, SEDGWICK COUNTY, KANSAS

Allow 150 cfs Overspill  
100yr. From Cadillac Lake



Basin	Area (Ac.)	Type	02 cfs	05 cfs	100 cfs
A	4.2	Res.	7.7	9.6	19.8
B	11.0	Res.	20.2	25.1	51.9
C	2.1	B.L.	1.3	1.7	5.7
D	2.75	B.L.	1.7	2.3	7.6
E	1.4	Res.	2.6	3.2	6.6
F	3.9	Res.	7.2	8.9	18.4
G	6.8	Res.	10.7	13.2	27.4
H	1.6	B.L.	1.0	1.3	4.4
I	2.0	Res.	3.7	4.6	9.4
J	1.7	B.L.	1.0	N/A	4.6
K	3.7	Res.	6.8	N/A	17.5
L	4.0	Res.	7.4	9.1	18.9
M	4.45	Res.	8.2	10.1	21.0
N	1.4	B.L.	0.9	1.2	3.8

All basins are hydrological soil type "B" with a time of concentration of 15 minutes. Runoff factors of 0.40, 0.50, and 0.64 are used for the 2yr., 5yr. and 100 year runoff respectively. Rainfall intensity factors of 3.53 in/hr., 4.5 in/hr. and 7.37 in/hr. are used for the 2yr., 5yr. and 100yr. storms respectively.



## DRAINAGE PLAN

11/12/91

FILMED FROM THE BEST AVAILABLE COPY

**BENCH MARKS:**

R.R. Spike in Power Pole (east side), 46' South & 1' West of S.W. Corner Lot 41, Blk 4, Chadsworth 2nd Add. Elev. = 165.17 City Datum

Square Cut Top of Curb, Adjacent to N.E. Corner Lot 22, Blk 1 Chadsworth Addition Elev. = 164.62 City Datum

R.R. Spike in Power Pole (east side), 142.5' South & 20' West of N.W. Corner Lot 1, Blk 4 Chadsworth 2nd Add. Elev. = 164.01 City Datum

Cross Cut in Top of Headwall at Center Line of Double Sludge RCBG, 251' East & 48' South of S.W. Corner of Chadsworth Addition Elev. = 159.14 City Datum

**NOTE:**

Minimum garage floor elevations are shown on the plans. Contractor to set finish floor elevation.

All street elevations shown on plans are for top of curb (full height).

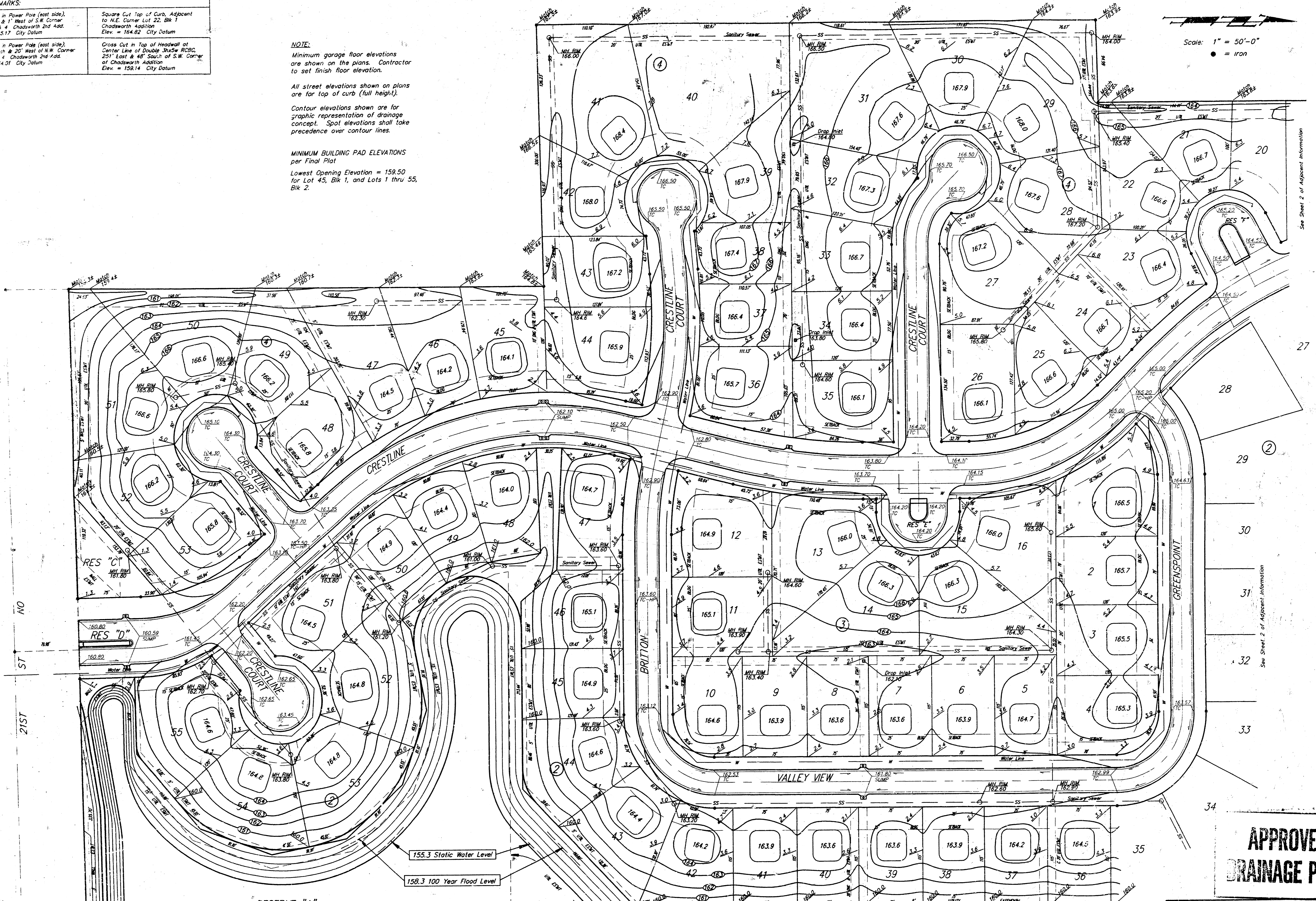
Contour elevations shown are for graphic representation of drainage concept. Spot elevations shall take precedence over contour lines.

**MINIMUM BUILDING PAD ELEVATIONS per Final Plat**

Lowest Opening Elevation = 159.50 for Lot 45, Blk 1, and Lots 1 thru 55, Blk 2.

Scale: 1" = 50'-0"

● = Iron



RES "D" SUMP

RES "C" SUMP

155.3 Static Water Level

158.3 100 Year Flood Level

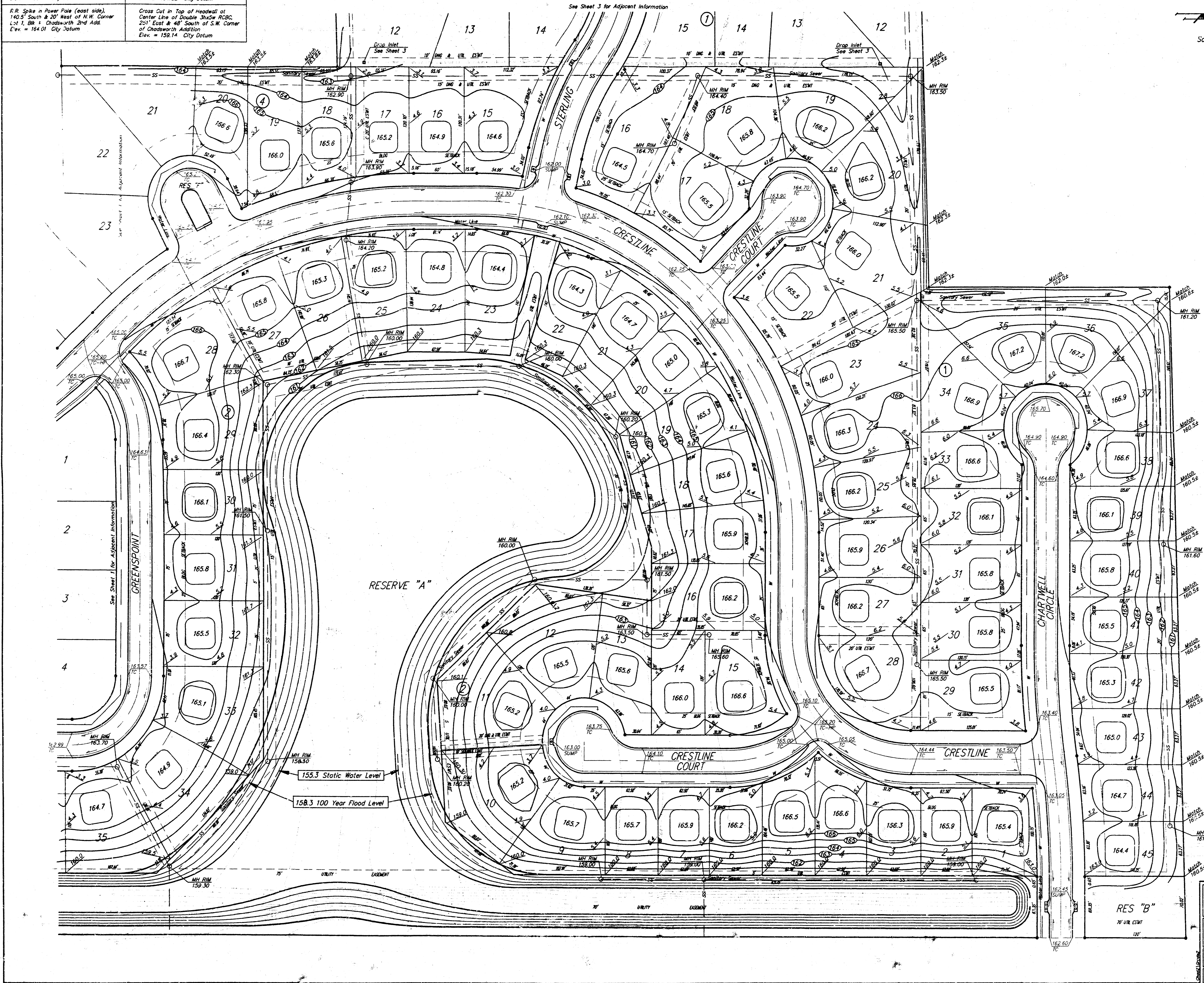
RESERVE "A"

**APPROVED DRAINAGE PLAN**

CHADSWORTH 2ND ADDITION LOT GRADING PLAN			
BAUGHMAN COMPANY P. A. ENGINEERING & SURVEYING 316/282-7271 • 315 ELLIS • WORTH, KANSAS 67211			
PROJECT NUMBER			SHEET 1 OF 3
DESIGN P.C.M.	DRAWN P.C.M.	UTIL. CHECK'D DATE Jan 24, 92	SCALE 1"=50'-0" OF 3

FILMED FROM THE BEST

BENCH MARKS:	
R.R. Spike in Power Pole (east side), 45' South & 1' West of S.W. Corner Lot 41, Blk 4 Chadsworth 2nd Add. Elev. = 165.17 City Datum	Square Cut Top of Curb, Adjacent to N.E. Corner Lot 23, Blk 1 Chadsworth Addition Elev. = 164.82 City Datum
R.R. Spike in Power Pole (east side), 140.5' South & 20' West of N.W. Corner Lot 1, Blk 1 Chadsworth 2nd Add. Elev. = 164.01 City Datum	Cross Cut in Top of Headwall of Center Line of Double Shdw RCBC, 201' East & 48' South of S.W. Corner of Chadsworth Addition Elev. = 159.14 City Datum



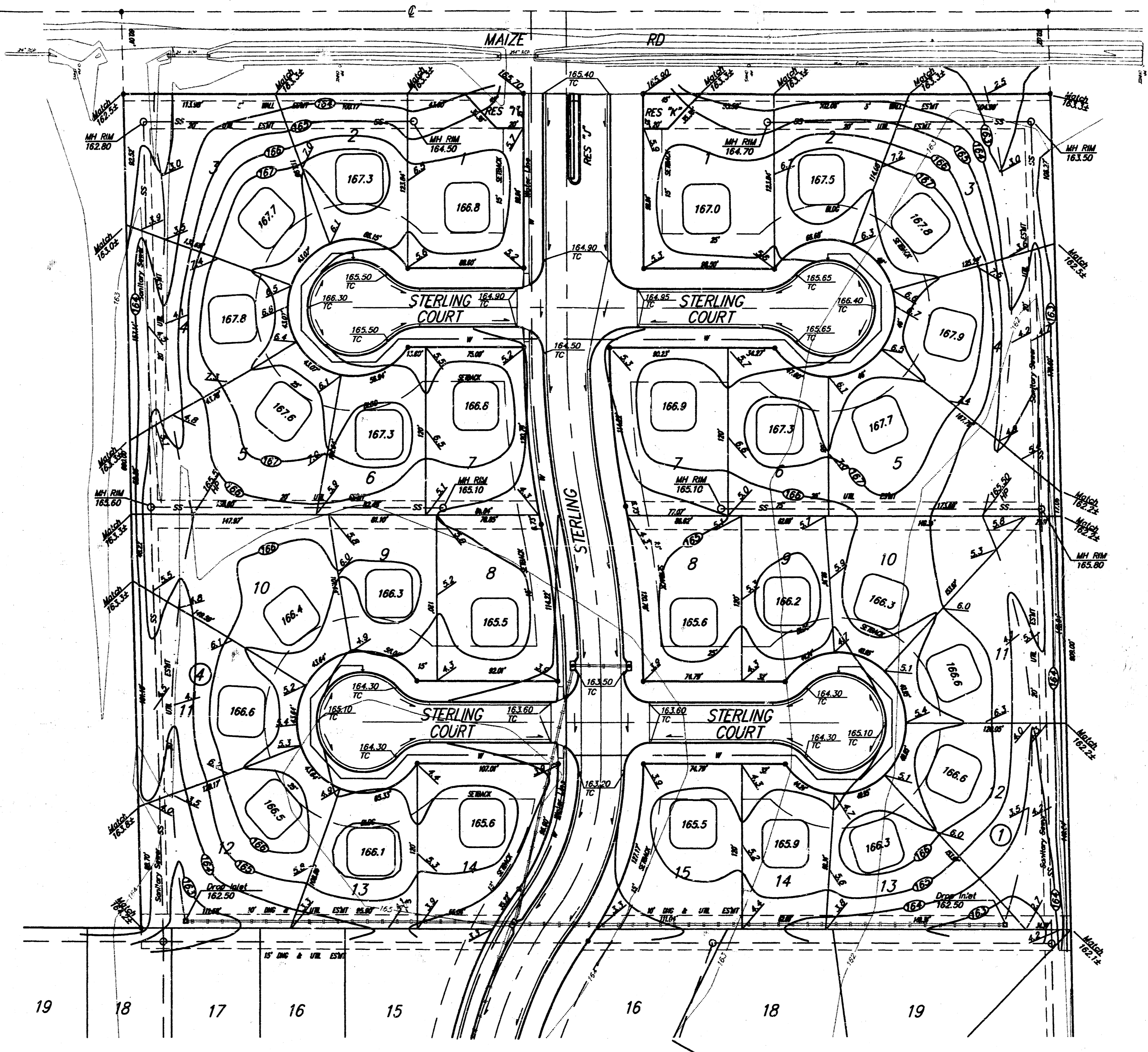
Scale: 1" = 50'-0"  
 ● = Iron

**NOTE:**  
 Minimum garage floor elevations are shown on the plans. Contractor to set finish floor elevation.  
 All street elevations shown on plans are for top of curb (full height).  
 Contour elevations shown are for graphic representation of drainage concept. Spot elevations shall take precedence over contour lines.  
**MINIMUM BUILDING PAD ELEVATIONS per Final Plat**  
 Lowest Opening Elevation = 158.50 for Lot 45, Blk 1, and Lots 1 thru 55, Blk 2.

<b>CHADSWORTH 2ND ADDITION LOT GRADING PLAN</b>			
<b>BAUGHMAN COMPANY P. A.</b> ENGINEERING & SURVEYING 316/282-7271 • 315 ELLIS • WORTH, KANSAS 67211			
PROJECT NUMBER			
DESIGN	DRAWN	DATE	SHEET
P.J.M.	P.J.M.	11-27-11	2 of 3

BENCH MARKS:	
R.R. Spike in Power Pole (east side), 4' South & 1' West of S.W. Corner Lot 41, Blk 4 Chadsworth 2nd Add. Elev. = 165.17 City Datum	Square Cut Top of Curb, Adjacent to N.E. Corner Lot 22, Blk 1 Chadsworth Addition Elev. = 164.82 City Datum
R.R. Spike in Power Pole (east side), 141.5' South & 20' West of N.W. Corner Lot 1, Blk 4 Chadsworth 2nd Add. Elev. = 164.01 City Datum	Cross Cut in Top of Headwall of Center Line of Double Track R200, 25' East & 40' South of S.W. Corner of Chadsworth Addition Elev. = 158.14 City Datum

Scale: 1" = 50'-0"  
 ● = Iron



**NOTE:**  
 Minimum garage floor elevations are shown on the plans. Contractor to set finish floor elevation.  
 All street elevations shown on plans are for top of curb (full height).  
 Contour elevations shown are for graphic representation of drainage concept. Spot elevations shall take precedence over contour lines.  
 MINIMUM BUILDING PAD ELEVATIONS per Final Plat  
 Lowest Opening Elevation = 159.50 for Lot 45, Blk 1, and Lots 1 thru 55, Blk 2.

See Sheet 2 for Adjacent Information

See Sheet 2 for Adjacent Information

<b>CHADSWORTH 2ND ADDITION LOT GRADING PLAN</b>				
<b>BAUGHMAN COMPANY P. A.</b> ENGINEERING & SURVEYING 318/282-7271 • 315 ELLIS • WICHITA, KANSAS 67211				
PROJECT NUMBER				
DESIGN	DRAWN	UTL. CHECK'D	DATE	SCALE
P.J.M.	P.J.M.		Jan 24, 92	1"=50'-0"
				SHEET 3 OF 3

FILMED FROM THE BEST AVAILABLE COPY