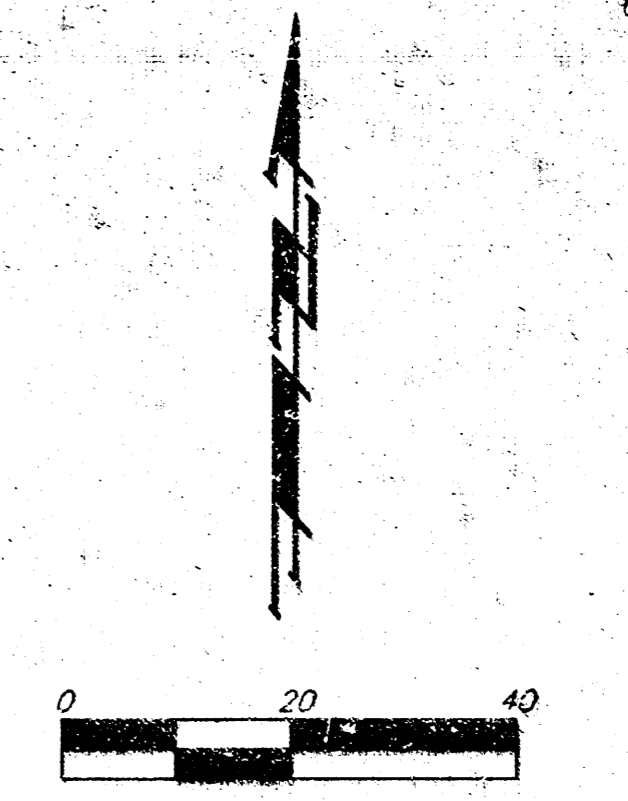
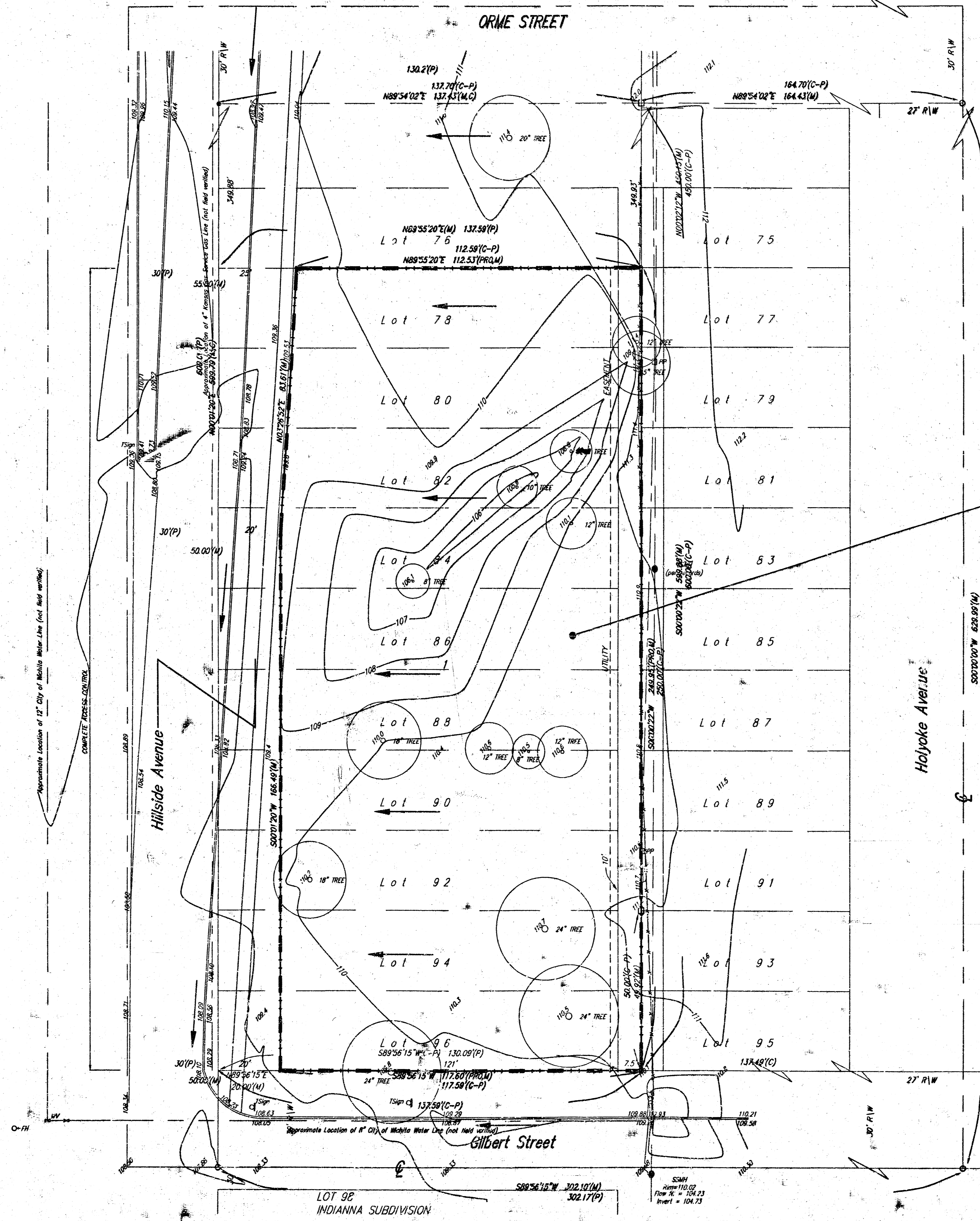


# DRAINAGE PLAN

## CHANG & ARENSBERG ADDITION

### WICHITA, SEDGWICK COUNTY, KANSAS



- (PRO) = PROPOSED
- (M) = MEASURED
- (D) = DESCRIBED
- (P) = PLATTED
- (C-P) = CALCULATED PER PLATTED INFO.
- = #4 Soughness Rubber Set
- = 1/2" Iron Pipe in Thimble Found
- = 1/2" Iron Pipe Found
- IN ○ = Fire Hydrant
- HP □ = Power Pole
- Sign △ = Sign
- SSM ○ = Sanitary Sewer Manhole
- SSM ○ = Stormwater Sewer Manhole
- T ○ = Tree
- WV ○ = Water Valve

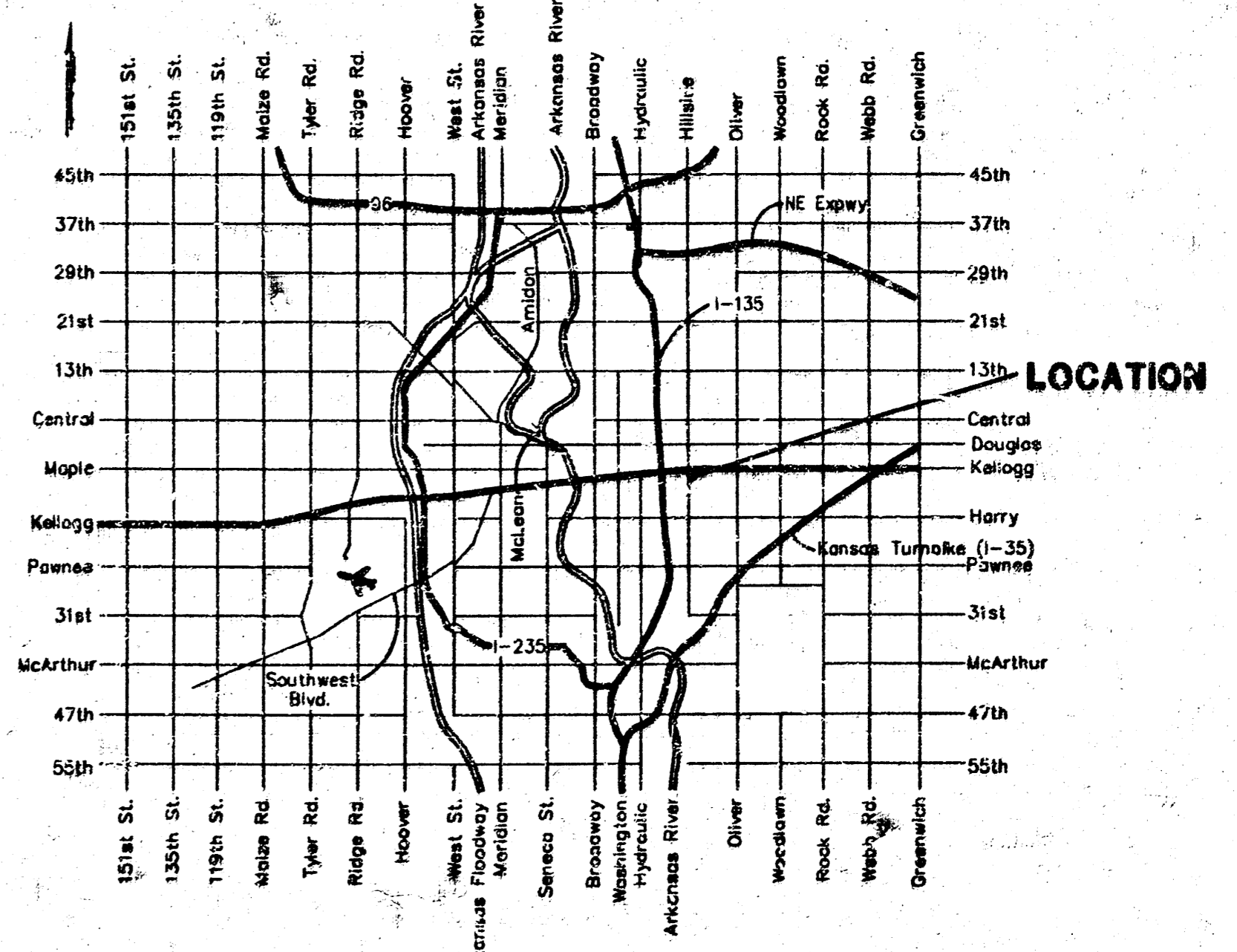
BENCHMARK: C.O.M. DISC 44.6 S. AND 60' W CENTERLINE OF LINCOLN AND HILLSIDE.

OWNER:  
CITY OF WICHITA  
455 N. MAIN  
WICHITA, KANSAS 67202

CONTRACT PURCHASER:  
JOSEPH CHANG  
2016 S. WASHINGTON  
WICHITA, KS 67211  
(316) 267-3824

Developed Conditions  
D.A. = 0.70 acres  
C<sub>s</sub> = 0.85  
Q<sub>s</sub> = 2.7 cfs  
Q<sub>100</sub> = 4.4 cfs

NOTE:  
The Lots Will Be Developed As A One Parcel  
Unit With Discharge To The Street via Driveways  
And/Or Neenah Storm Water Curb Openings w/ Partly lot detentions  
As Necessary.



LOT 98  
INDIANNA SUBDIVISION