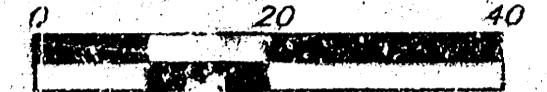


# DRAINAGE PLAN CHANG & ARENSBERG 2ND ADDITION WICHITA, SEDGWICK COUNTY, KANSAS

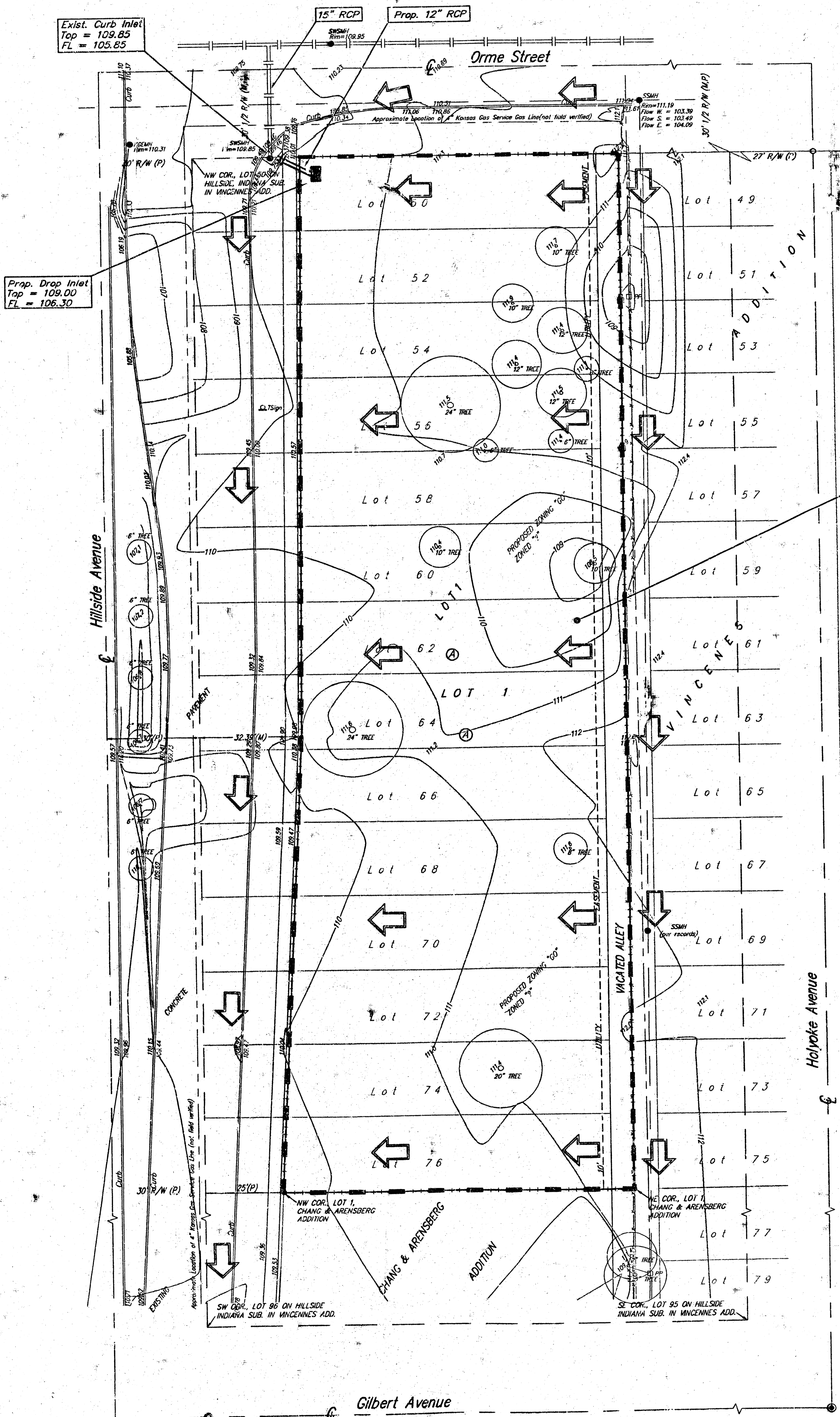


(P) = PLANNED  
(M) = MEASURED  
(C) = CALCULATED  
(D) = DESCRIBED  
(PRO) = PROPOSED  
(C-P) = CALCULATED PER PLATTED INFO.  
(C-R) = CALCULATED PER RESURVEY INFO.  
(C-D) = CALCULATED PER DESCRIBED INFO.

⊙ = #4 BAUGHMAN REBAR (SET)  
○ = 1" IRON IN THIMBLE (FOUND)  
□ = 1/2" IRON PIPE (FOUND)  
⊖ = 1/2" IRON IN THIMBLE (FOUND)  
⊕ = 1-1/2" IRON IN THIMBLE (FOUND)

HYD = Fire Hydrant  
PP = Power Pole  
SP = Sign  
SWM = Sanitary Sewer Manhole  
SWM = Stormwater Sewer Manhole  
T = Tree  
W = Water

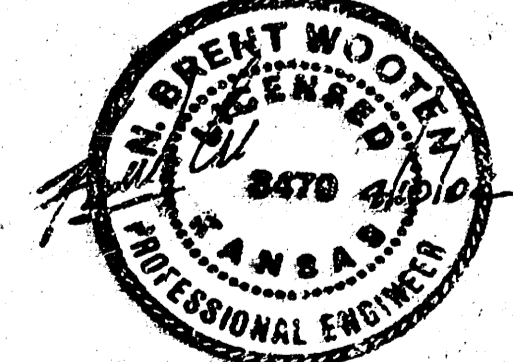
BENCHMARK:  
C.O.W. DISC 44.6 S. AND 60' W. CENTERLINE  
OF LINCOLN AND HILLSIDE.



Exist. Curb Inlet  
Top = 109.85  
FL = 105.85

Prop. Drop Inlet  
Top = 109.00  
FL = 106.30

D.A. = 0.65 ac.  
T<sub>100</sub> = 85.491  
T<sub>5</sub> = 15 min.  
Q<sub>5</sub> = 3.3 cfs  
Q<sub>100</sub> = 5.7 cfs



**DRAINAGE NOTE:**  
The lot will be served with storm sewer located in the northwest corner of the lot. If the siteplan grading can not drain to inlets, all runoff shall discharge to the street via driveways and/or Neenah storm water curb openings.