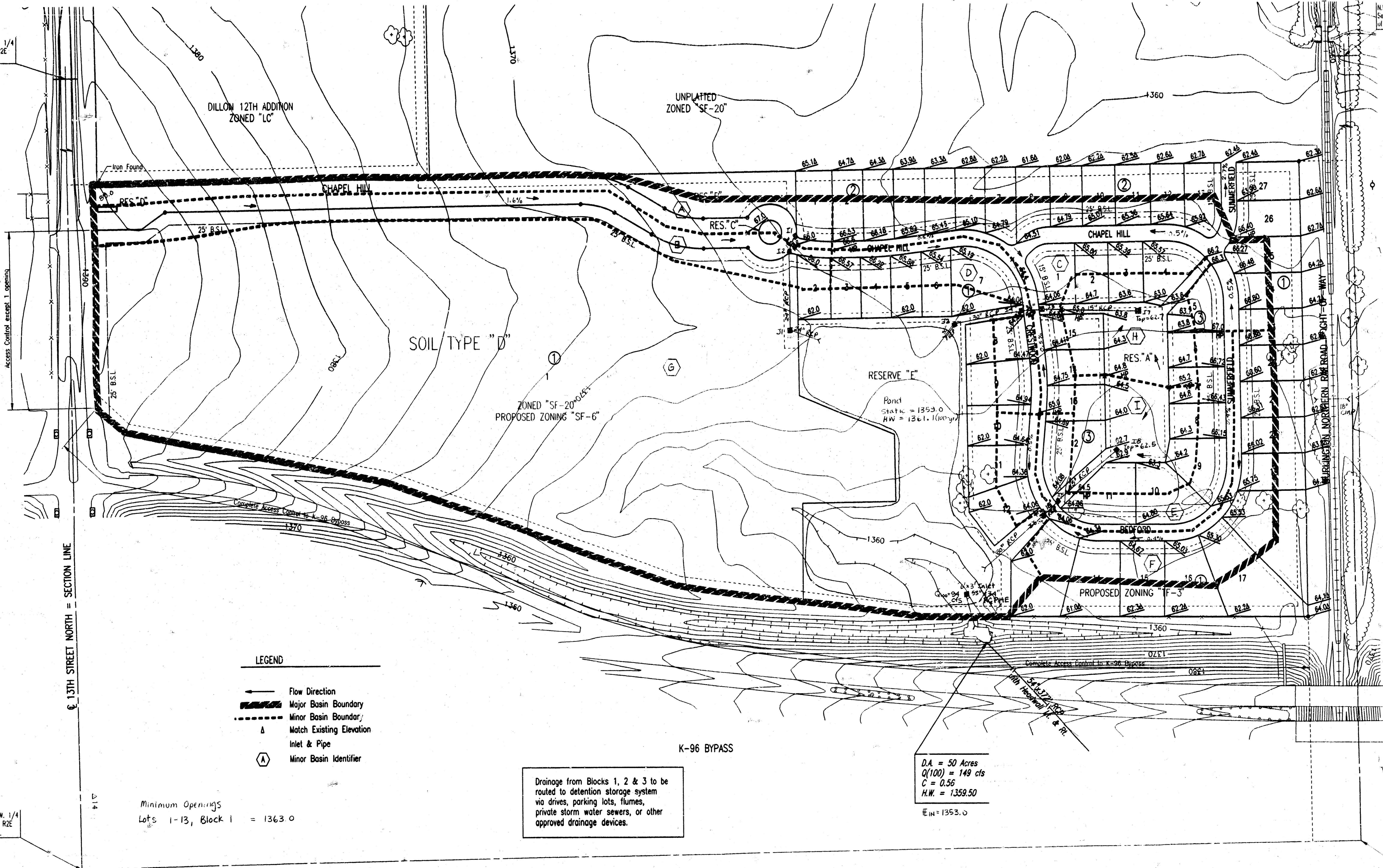


DRAINAGE PLAN FOR CHAPEL HILL ADDITION TO WICHITA, SEDGWICK COUNTY, KANSAS

Scale: 1"=100'

S.W. Corner, S.W. 1/4
Sec. 10, T27S, R2E
of the 6th P.M.

N.W. Corner, S.W. 1/4
Sec. 10, T27S, R2E
of the 6th P.M.



- LEGEND**
- Flow Direction
 - ▬ Major Basin Boundary
 - - - Minor Basin Boundary
 - △ Match Existing Elevation
 - △ Inlet & Pipe
 - ⊙ Minor Basin Identifier

Minimum Openings
Lots 1-13, Block 1 = 1363.0

Drainage from Blocks 1, 2 & 3 to be
routed to detention storage system
via drives, parking lots, flumes,
private storm water sewers, or other
approved drainage devices.

D.A. = 50 Acres
Q(100) = 149 cfs
C = 0.56
H.W. = 1359.50
E.M. = 1353.0

DSMR, KER OPER. KER SCALE: 1"=100.00
O:\1997\97\009\DRAINAGE2 10-15-1998 05:16:55 pm

S.E. Corner, S.W. 1/4
Sec. 10, T27S, R2E
of the 6th P.M.