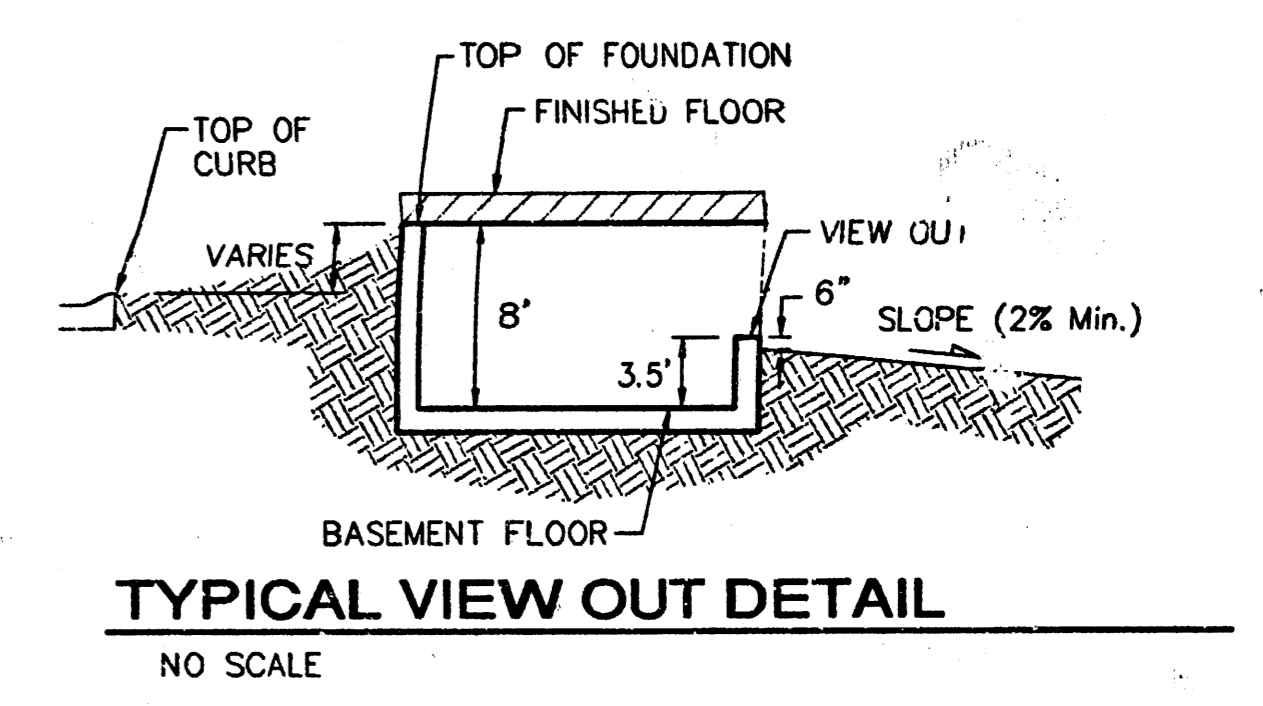
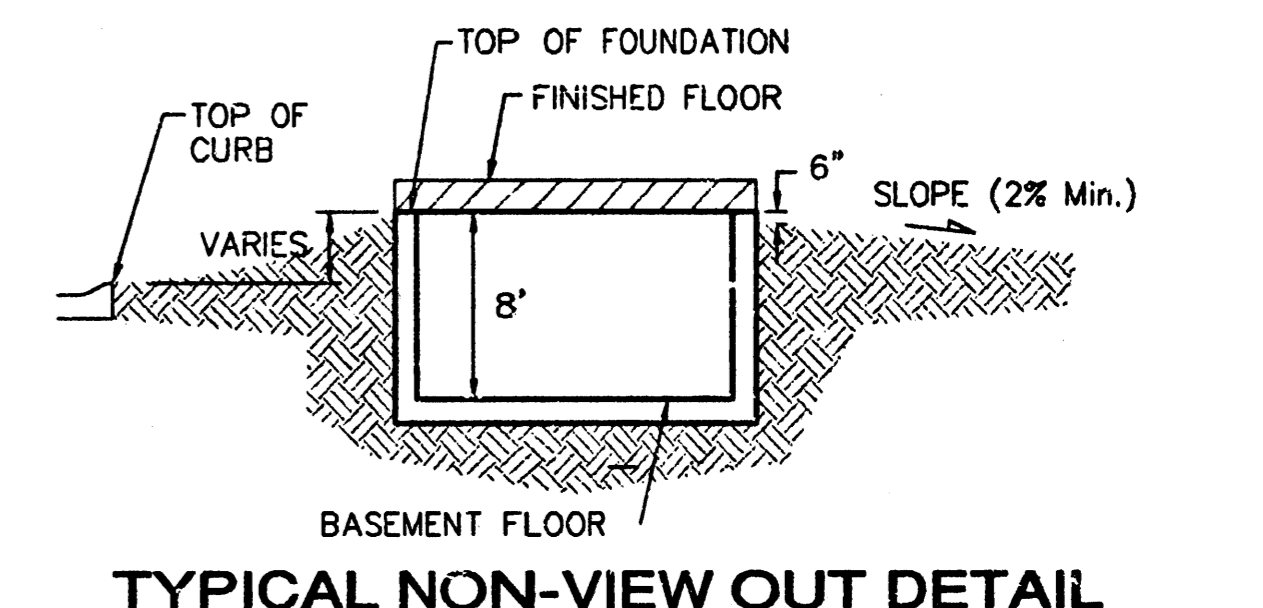
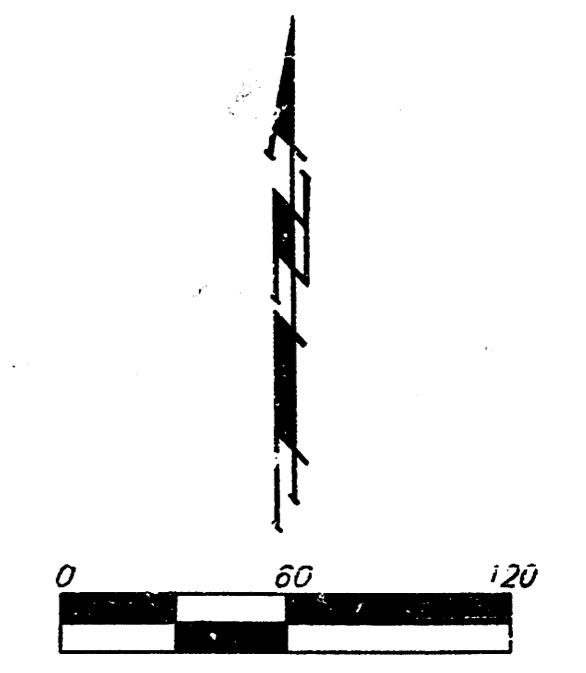


BENCHMARKS:
 BM #1: C.O.W. disc at SW corner of intersection.
 30.00' S. of CL of 13th St. N. 35.00'±
 W. of CL of 135th St. W.
 Elev. = 168.25 City Datum
 BM #2: Small RR spike in 4th HLP W. of 135th St. W. on south side of 13th St. N. (N. face of HLP).
 Elev. = 179.24 City Datum
 BM #3: RR spike in Power Pole. 1321.65 W. of 135th St. W. 30' N. of 13th St. N.
 Elev. = 178.45 City Datum



NOTES:
 Proposed Top of Foundation Elevations Are Shown On Plans. Contractor to Set Finished Floor Elevations.
 All Street Elevations Shown on Plans Are for Top of Curb (Full-Height).
 This Grading Plan is Designed with View-Outs. Elevations Shown as XX.X V.O. indicate View-Out structure elevation.
 Lot dimensions have been omitted on this plan, refer to the recorded plot for this information.
 Add 100 to finish grade elevations indicated to achieve city datum elevation. Existing grade elevations are in city datum.

MINIMUM BUILDING PAD ELEVATIONS FOR LOWEST OPENING TO THE STRUCTURES

LOT	BLOCK	ELEVATION CITY DATUM
2-11, 13-21	F	173.5

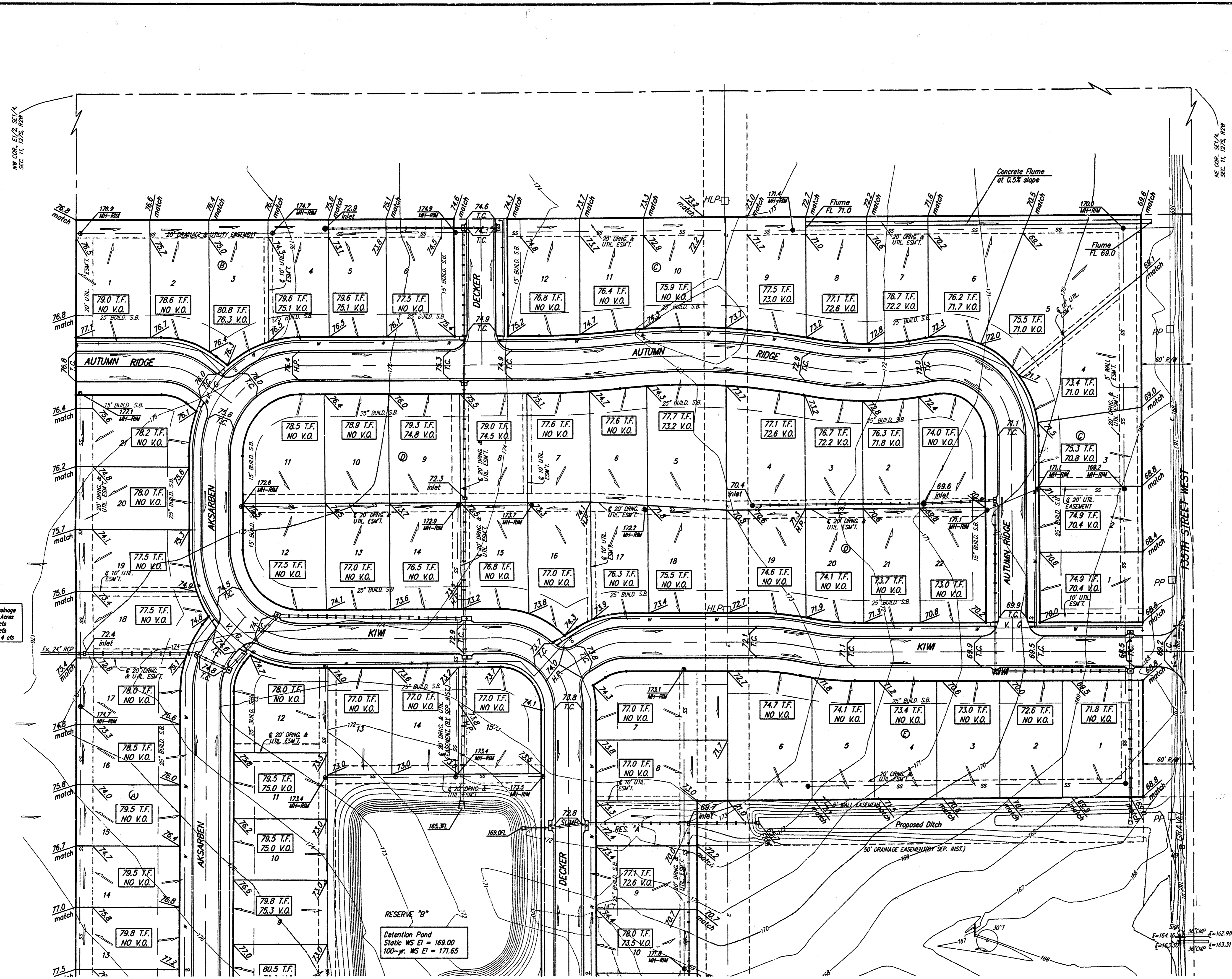
APPROVED
DRAINAGE PLAN

Copper Gate North Addition
Grading Plan
 Baughman Grading County
 Wichita, Sedgwick County, Kansas

REVISIONS:

PROJECT NUMBER	DESIGN	BLG	DRWN
	APPROVED	JAK	JAK
	DATE	9/06/05	
	SCALE	1" = 60'	
	SHEET	1 OF 2	

F:\Grade\Copper Gate North\Grading.dwg



On-Site Drainage
 D.A. = 10 Acres
 Q2 = 6.8 cfs
 Q3 = 8.4 cfs
 Q100 = 31.4 cfs

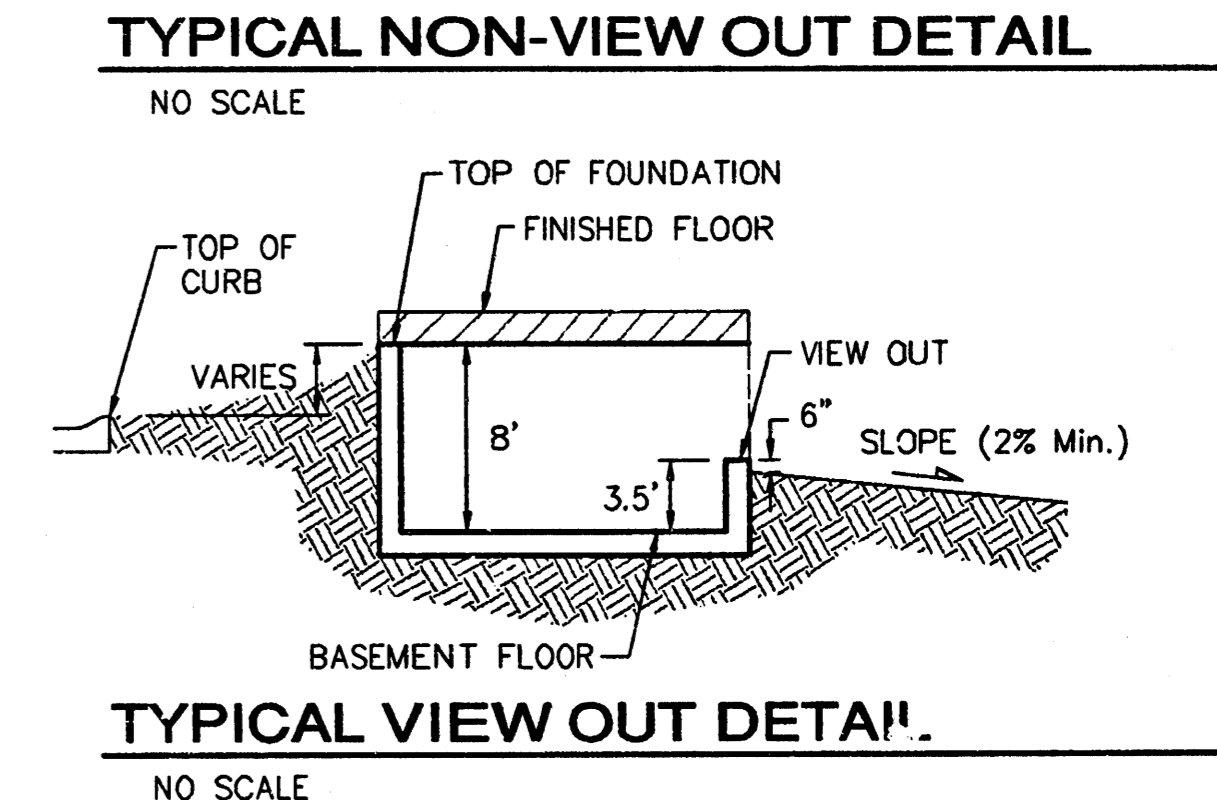
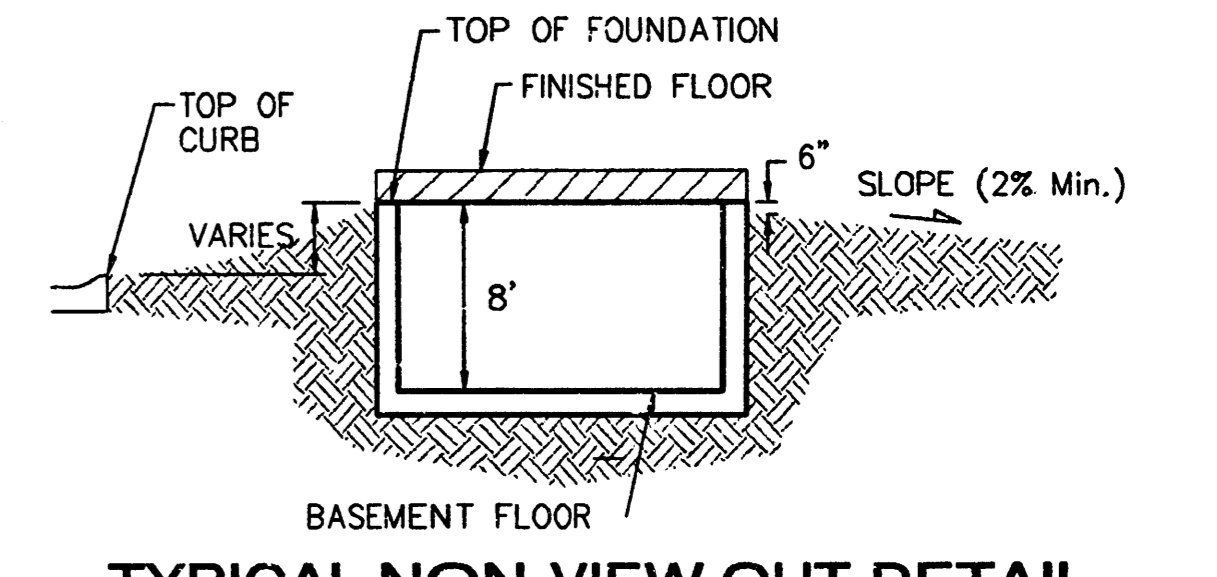
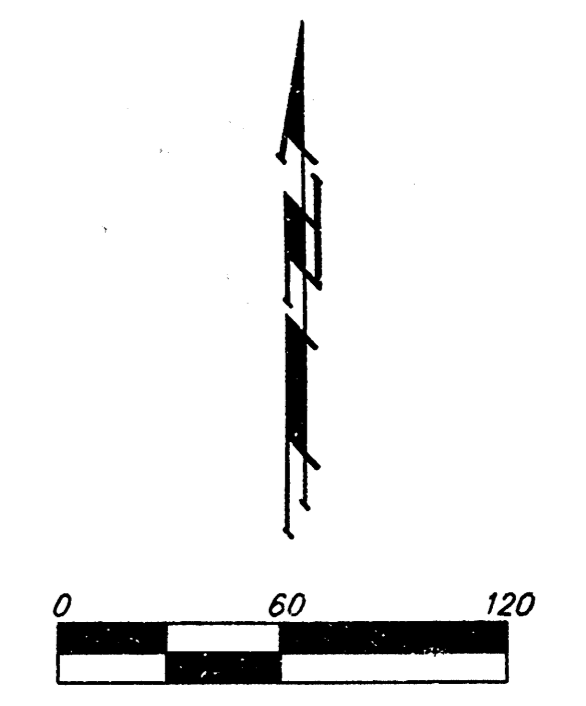
Retention Pond
 Static WS E1 = 169.00
 100-yr. WS E1 = 171.65

BENCHMARKS:

BM #1: C.O.W. disc at SW corner of intersection.
 30.00' S. of CL of 13th St. N. 35.00'±
 W. of CL of 135th St. W.
 Elev. = 168.25 City Datum

BM #2: Small RR spike in 4th HLP W. of 135th St. W. on south side of 13th St. N. (N. face of HLP).
 Elev. = 179.24 City Datum

BM #3: RR spike in Power Pole. 1321.65
 W. of 135th St. W.
 30' N. of 13th St. N.
 Elev. = 178.45 City Datum



NOTES:

Proposed Top of Foundation Elevations Are Shown On Plans. Contractor to Set Finished Floor Elevations.

All Street Elevations Shown on Plans Are for Top of Curb (Full-Height).

This Grading Plan is Designed with View-Outs. Elevations Shown as XXX V.O. indicate View-Out structure elevation.

Lot dimensions have been omitted on this plan, refer to the recorded plat for this information.

Add 100 to finish grade elevations indicated to achieve city datum elevation. Existing grade elevations are in city datum.



MINIMUM BUILDING PAD ELEVATIONS FOR LOWEST OPENING TO THE STRUCTURES

LOT	BLOCK	ELEVATION	
		CITY DATUM	
2-11, 13-21	F	173.5	

Baughman Grading Plan
 Wichita, Sedgewick County, Kansas

Baughman Company, P.A. 315 8th St. Wichita, KS 67211 P 316-693-7271 F 316-693-0149
 ENGINEERING | SURVEYING | PLANNING | LANDSCAPE ARCHITECTURE

PROJECT NUMBER	DESIGN	DRAWN
	BLG	JAK
REVISIONS	APPROVED	DATE
		9/06/05
	SCALE	
	1" = 60'	
	SHEET	
		2 OF 2

F:\Cread\Copper Gate North\Cread.dwg