

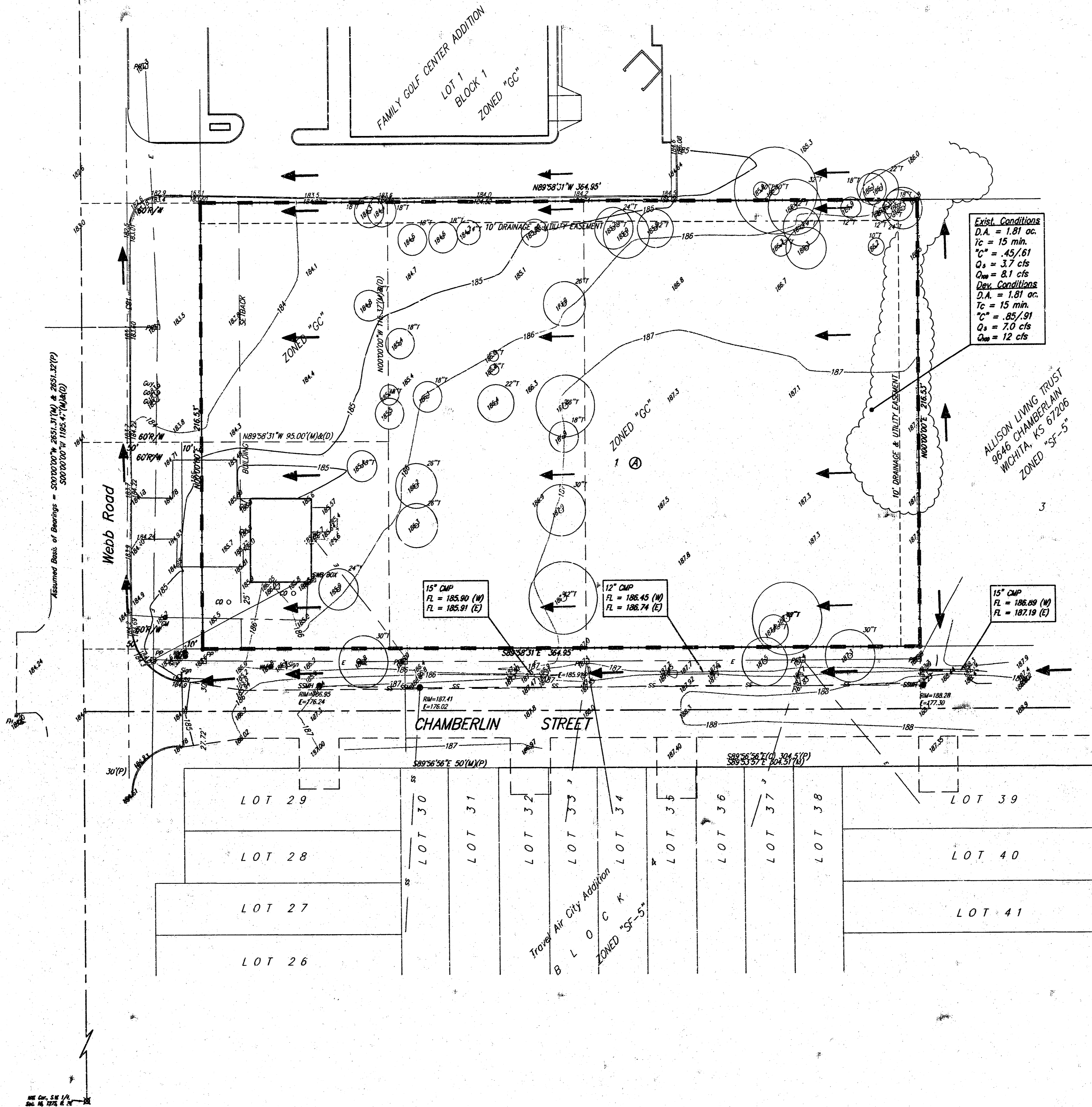
DRAINAGE PLAN

CORNEJO EAST ADDITION

WICHITA, SEDGWICK COUNTY, KANSAS

ME Cor. 55.24
201 N. WATER

ZONED "SF-5"
 USD 259
 201 N. WATER
 WICHITA, KS 67202

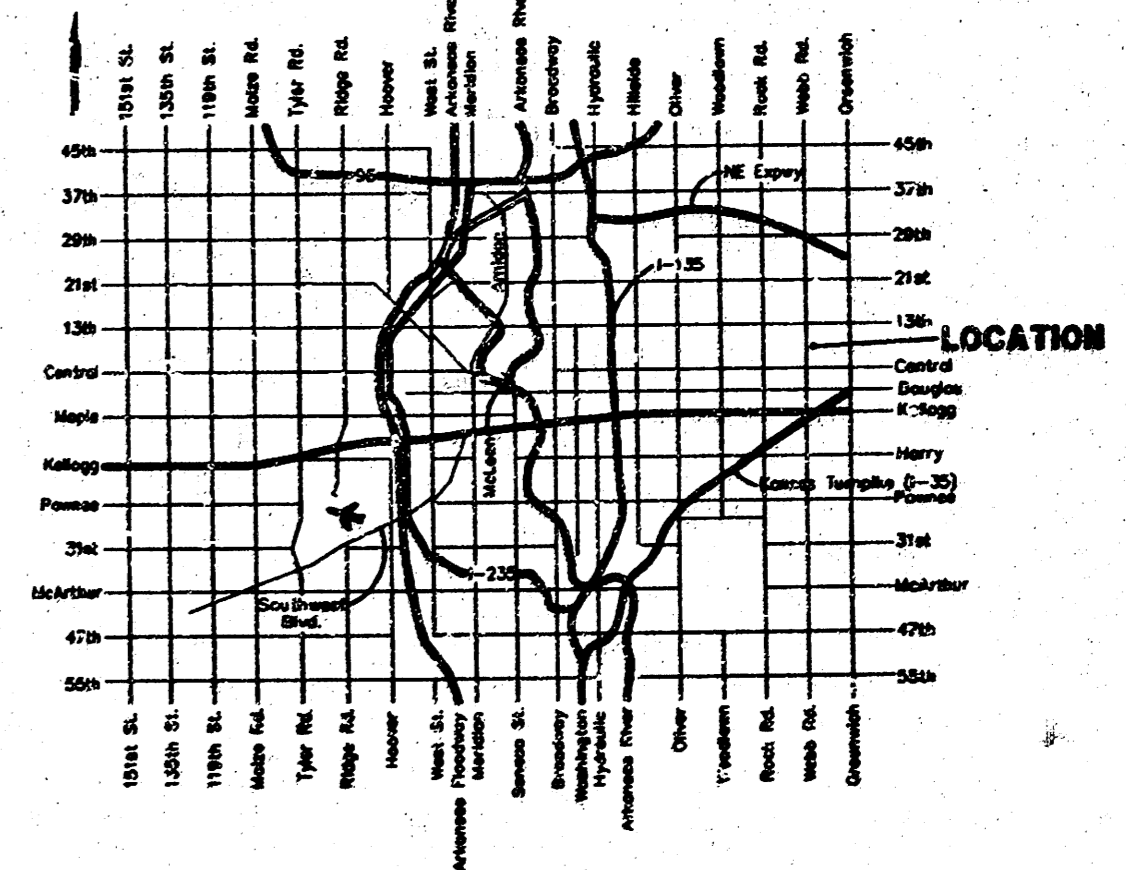


DATE OF PREPARATION: 14 OCTOBER 2002
 DATE OF TOPOGRAPHY: 23 SEPTEMBER 2002
 CONTOUR INTERVALS = 1'00"

- = #4 REBAR W/ "BAUGHMAN" CAP (FOUND)
- = #1 REBAR W/ "BAUGHMAN" CAP (SET)
- ⊗ = CROSS (FOUND)
- = 1/2" IRON (FOUND)
- = "K" HOLE & WASHER (FOUND)
- (M) = MEASURED
- (D) = DESCRIBED
- (P) = PLATTED
- (C) = CALCULATED

- CO ○ = Cleanout
- PH ○ = Fire Hydrant
- GU ○ = Guard Post (Ballard)
- GA ○ = Guy Anchor
- PP ○ = Power Pole
- SI ○ = Sign
- SSM ○ = Sanitary Sewer Manhole
- See Part 1 = Southwestern Bell Pedestal
- T ○ = Tree
- MM ○ = Meter Meter
- WV ○ = Water Valve

Benchmark:
 RR Spike, East Side of Telephone
 Pole Parcel A, Family Golf Center Addition
 37' S and 21' West of NW Cor.
 Elev. = 181.52 City Datum



14 OCTOBER 2002

BAUGHMAN COMPANY P. A.
 ENGINEERING, SURVEYING, & PLANNING
 316-262-7271 • 315 ELLIS • WICHITA, KANSAS 67211