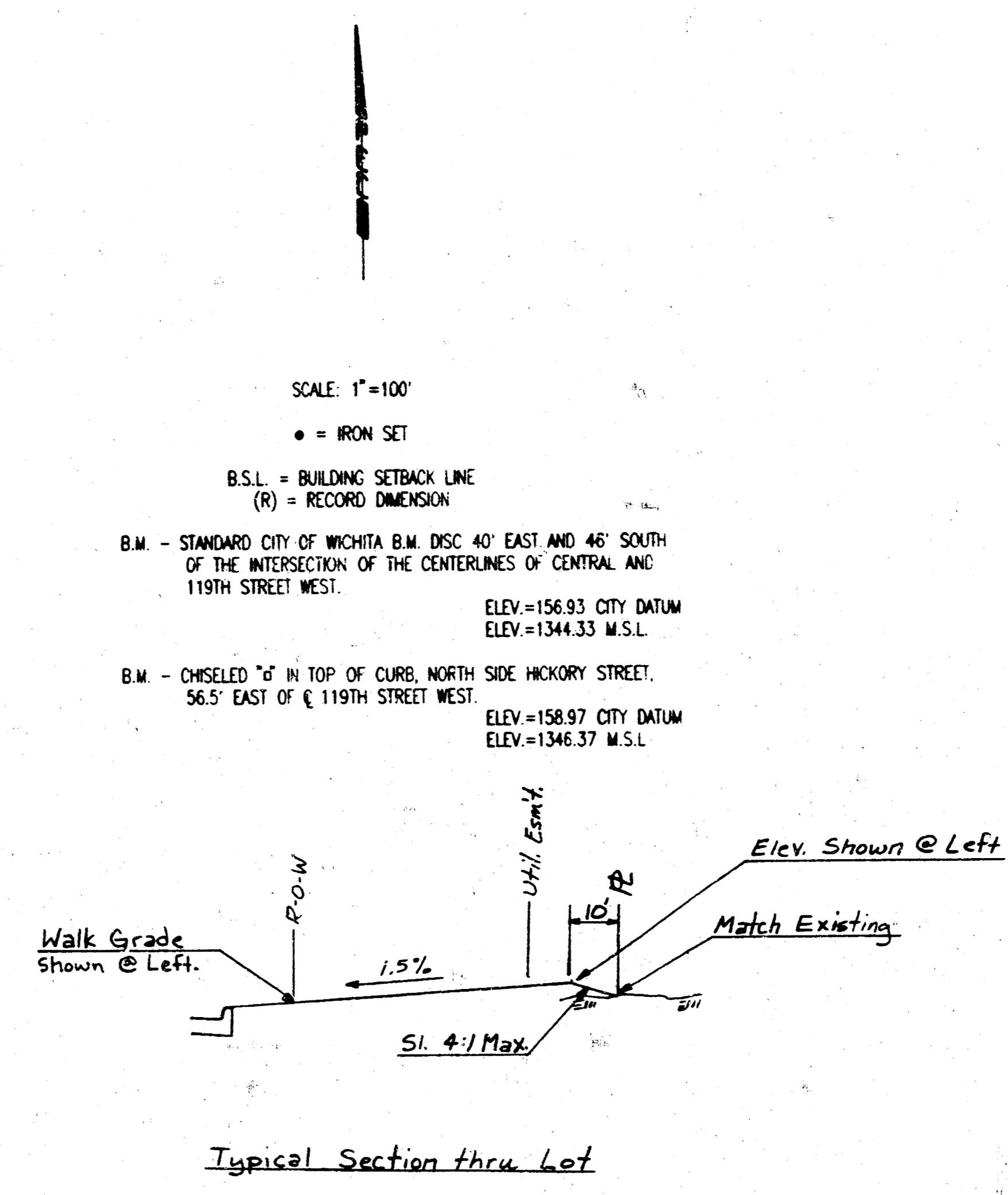
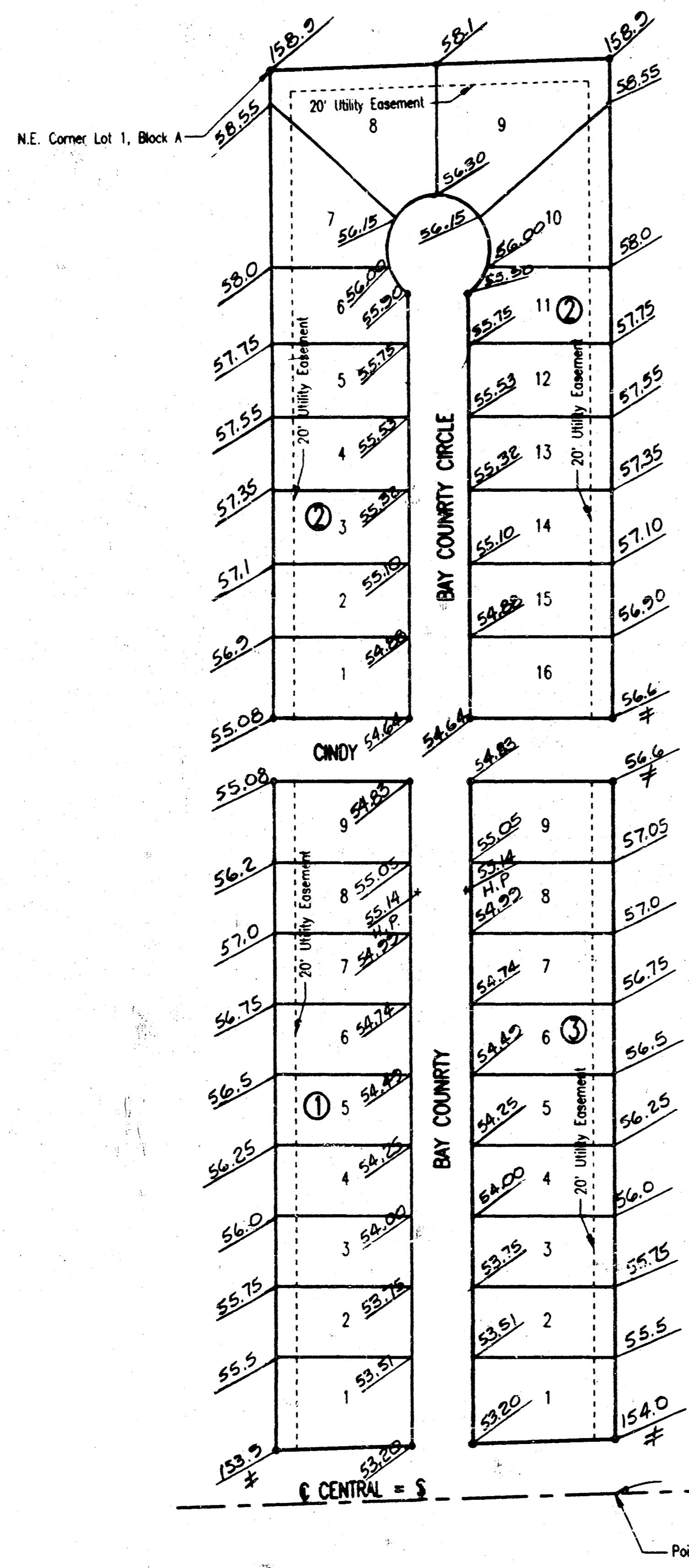
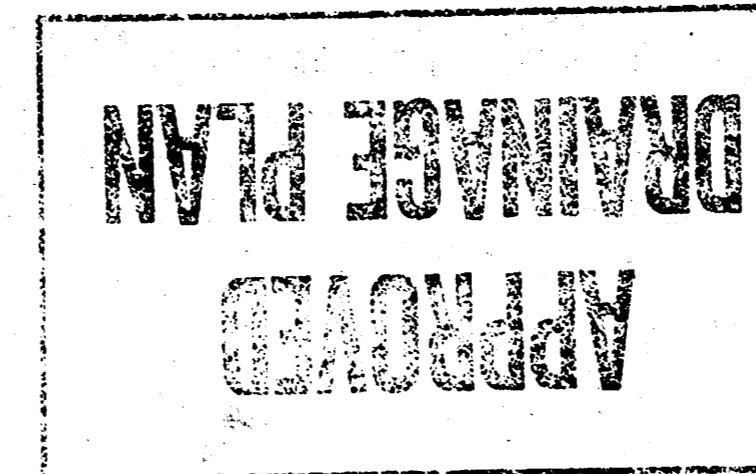


4-CORNER LOT GRADING PLAN
 COUNTRY MEADOWS WEST ADDITION
 TO WICHITA, SEDGWICK COUNTY, KANSAS



SCALE: 1"=100'
 • = IRON SET
 B.S.L. = BUILDING SETBACK LINE
 (R) = RECORD DIMENSION
 B.M. - STANDARD CITY OF WICHITA B.M. DSC 40' EAST AND 46' SOUTH
 OF THE INTERSECTION OF THE CENTERLINES OF CENTRAL AND
 119TH STREET WEST. ELEV.=156.93 CITY DATUM
 ELEV.=1344.33 M.S.L.
 B.M. - CHISELED "6" IN TOP OF CURB, NORTH SIDE HICKORY STREET,
 56.5' EAST OF C 119TH STREET WEST. ELEV.=158.97 CITY DATUM
 ELEV.=1346.37 M.S.L.

S.E. Corner S.E. 1/4
 Sec. 13, T27S, R2W
 of the 6th P.M.
 #6 Rebar in Thimble

C 119TH STREET WEST