

DOWN'S ADDITION
(Drainage)

SKETCH PLAT

DOWN'S ADDITION

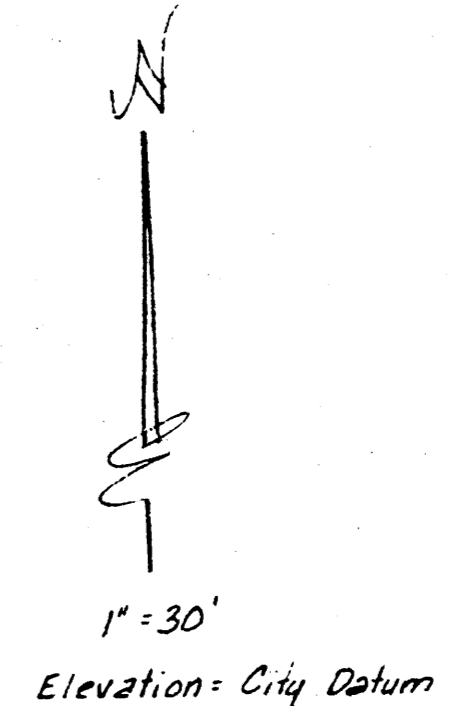
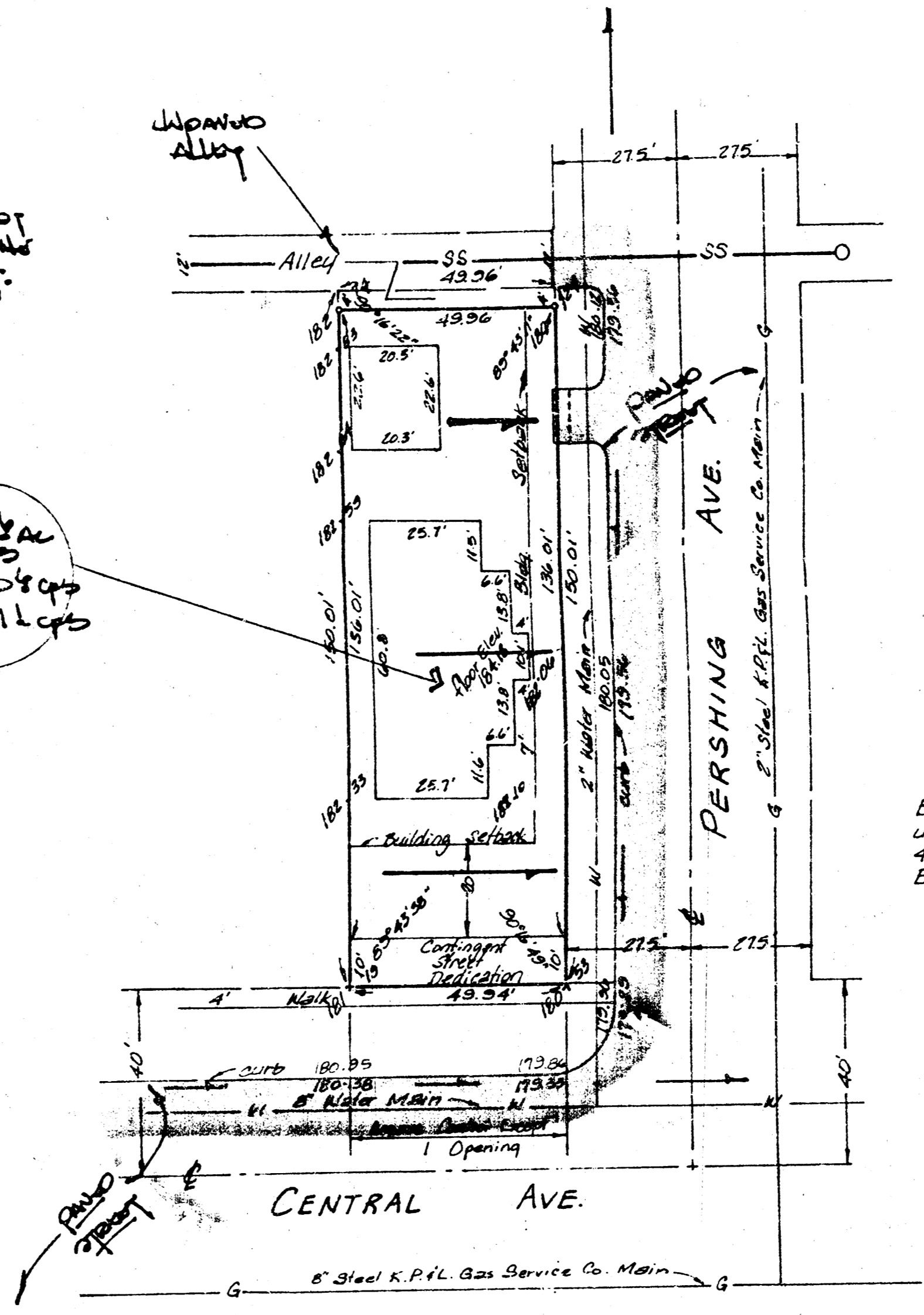
REPLAT OF LOTS 659 & 660
OVERLOOK ADDITION TO WICHITA, KANSAS

OWNER: CHARLES M. DOWN'S

DRAINAGE PLAN

NOTE: ALLEY TO NOT
OPEN UP TILL THE
BLOCK TO THE WEST.

CA = 0.1% ac
C = 0.1%
P = 0.1%
P = 11 cfs



BENCH MARK: R.R. Spike in west side of
utility pole at SW Corner of property @
430 S. Crestway
Elevation = 187.10 City Datum (Add 11874 for Sea Level)

GENERAL NOTES

The office-soned lot will drain east to Pershing
street which drains south to Central. When redevelop-
ed, the lot will be graded to drain to the street
thru driveways.

FEB. 14, 1980