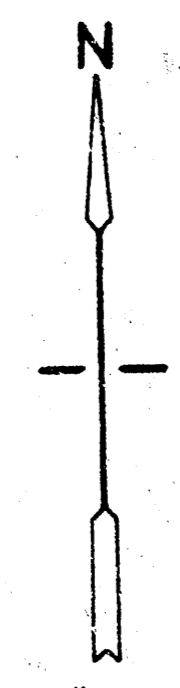
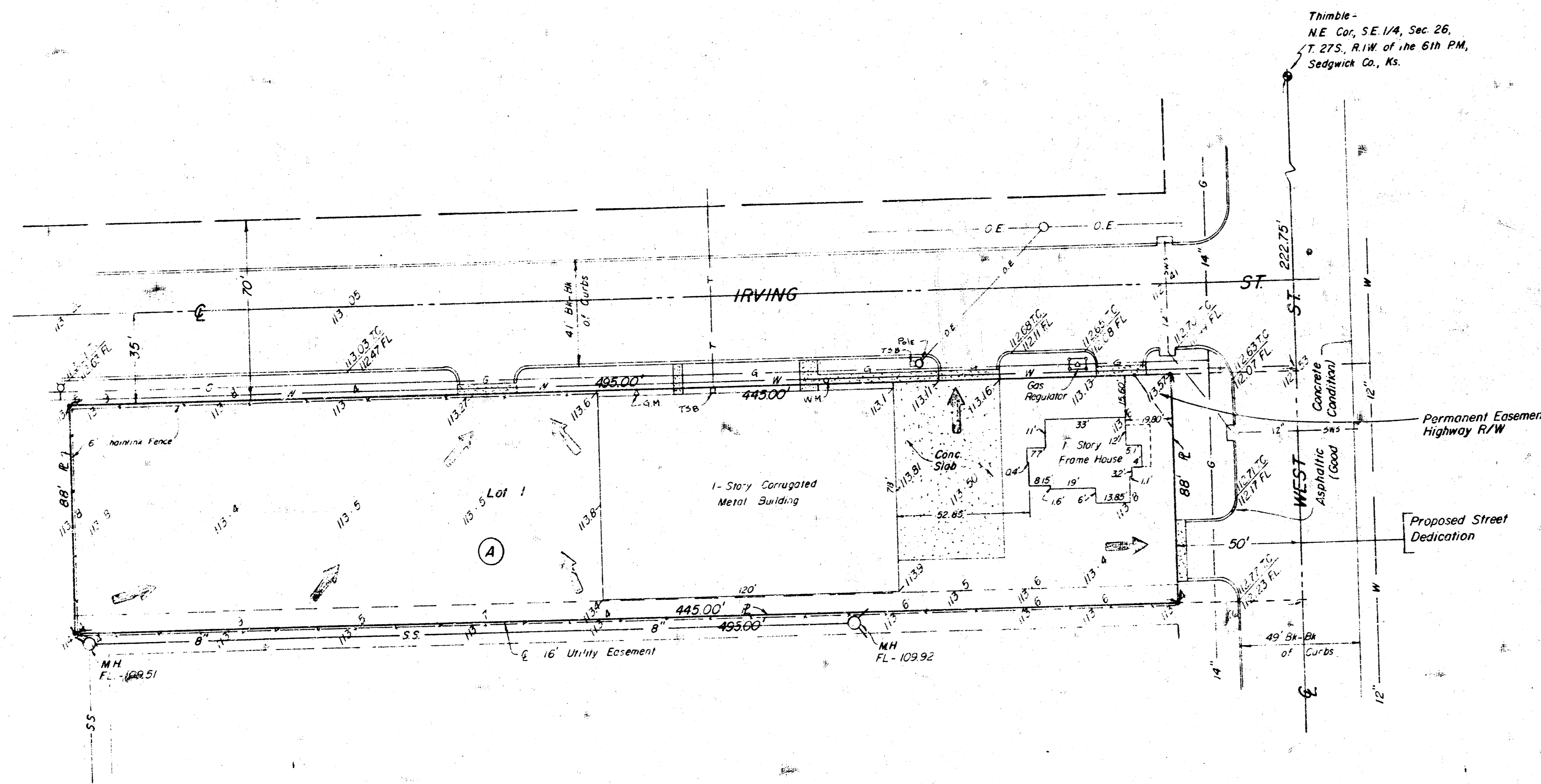


DRAINAGE CONCEPT
&
PRELIMINARY PLAT
of
GARY DUNN ADDITION

TO WICHITA, KANSAS

LEGAL DESCRIPTION

A TRACT BEGINNING 13-1/2 RODS SOUTH OF THE NORTHEAST CORNER OF THE SOUTHEAST QUARTER (SE/4) OF SECTION 26, TOWNSHIP 27 SOUTH, RANGE 1 WEST, THENCE SOUTH 88 FEET, THENCE WEST 30 RODS, THENCE NORTH 88 FEET, THENCE EAST 30 RODS TO THE PLACE OF BEGINNING.



- 1" = 30'
- = Iron
- = Water Main
- W = Water Meter
- F.H = Fire Hydrant
- G = Gas Main
- G.M = Gas Meter
- O.E = Overhead Electric
- T = Underground Telephone
- S.S = Sanitary Sewer
- S.W.S = Storm Water Sewer
- M.H = Manhole
- T.C = Top of Curb
- FL = Flow Line
- T.S.B = Telephone Splice Box
- ▨ = Concrete

Wm L. Moehring
MOEHRING & ASSOCIATES
CONSULTING ENGINEERS
WICHITA
April 26, 1994
84-036-SD

Benchmark:
City Standard Disc. 43' W. and 34' N.
of Irving and West Street
Elev. 113.096 City Datum