

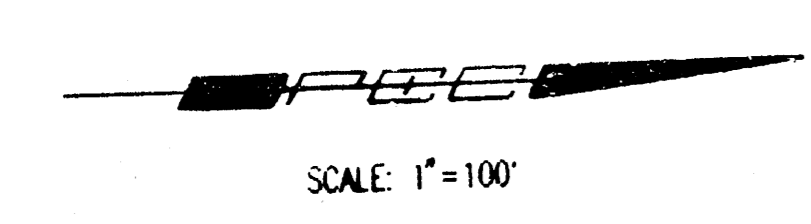
# EVERGREEN FOUR CORNER LOT GRADING

N.W. Corner, S. 1/4  
Sec. 6, T2S, R1W  
of the 6th P.M.  
Found 3/4" Iron Pipe

N.W. Corner, S. 1/2, NE. 1/4  
Sec. 6, T2S, R1W  
of the 6th P.M.  
Found #4 Rebar

Found 1/2" IP.  
0.18' West of Corner

DNR: KER SCALE 1"=30.00  
C:\1997\97057\out\corner 07-22-98 03:25:22 pm



• = IRON SET  
B.M.: CITY OF WICHITA STD. BENCH MARK DISC 64" EAST AND 99" SOUTH  
OF THE INTERSECTION OF THE CENTERLINES MAIZE ROAD AND  
21ST STREET NORTH.  
ELEV.=164.3 CITY DATUM  
ELEV.=1351.7 M.S.L.  
ESTABLISHED MINIMUM PAD (LOWEST OPENING) AS FOLLOWS:  
LOTS 1 THROUGH 26, BLOCK 7, = 165.6 CITY DATUM = 1353.0 M.S.L.

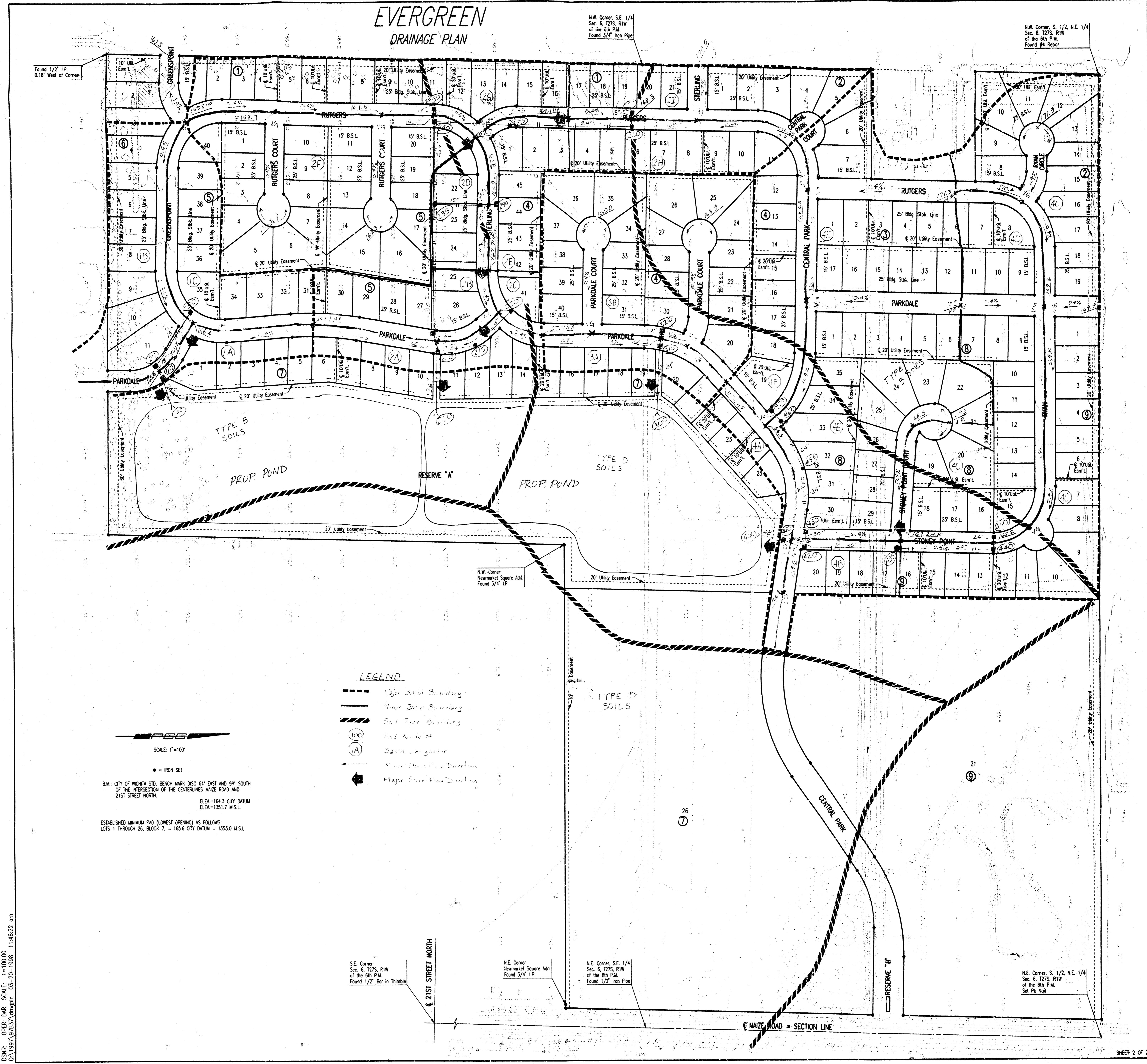
\* Match Existing Elevation  
HP High Point

N.W. Corner  
Newmarket Square Add.  
Found 3/4" IP

APPROVED  
ENGINEER'S SEAL

Revised 7-22-98 KER

# EVERGREEN DRAINAGE PLAN



Found 1/2" IP.  
0.18' West of Corner.

N.W. Corner, S.E. 1/4  
Sec. 6, T27S, R1W  
of the 6th P.M.  
Found 3/4" Iron Pipe

N.W. Corner, S. 1/2, NE. 1/4  
Sec. 6, T27S, R1W  
of the 6th P.M.  
Found #4 Rebar

N.W. Corner  
Newmarket Square Add.  
Found 3/4" IP.

S.E. Corner  
Sec. 6, T27S, R1W  
of the 6th P.M.  
Found 1/2" Bar in Thumb

N.E. Corner  
Newmarket Square Add.  
Found 3/4" I.P.

N.E. Corner, S.E. 1/4  
Sec. 6, T27S, R1W  
of the 6th P.M.  
Found 1/2" Iron Pipe

N.E. Corner, S. 1/2, NE. 1/4  
Sec. 6, T27S, R1W  
of the 6th P.M.  
Set Pk. Nail

- LEGEND**
- 1/2" Basin Boundary
  - 4" or 6" Basin Boundary
  - Soil Type Boundary
  - (A) Basins Area #
  - Basin Inlet/Outlet
  - Manhole
  - Major Storm Flow Direction

SCALE: 1"=100'

• = IRON SET

B.M.: CITY OF WICHITA STD. BENCH MARK DISC 64' EAST AND 99' SOUTH  
OF THE INTERSECTION OF THE CENTERLINES MAIZE ROAD AND  
21ST STREET NORTH.  
ELEV.=164.3 CITY DATUM  
ELEV.=1351.7 M.S.L.

ESTABLISHED MINIMUM FAD (LOWEST OPENING) AS FOLLOWS:  
LOTS 1 THROUGH 26, BLOCK 7, = 165.6 CITY DATUM = 1353.0 M.S.L.

MAIZE ROAD = SECTION LINE

DESIGNED BY: GREGORY D. PUGH, P.E.  
 DATE: 03-20-1998 11:46:22 am

