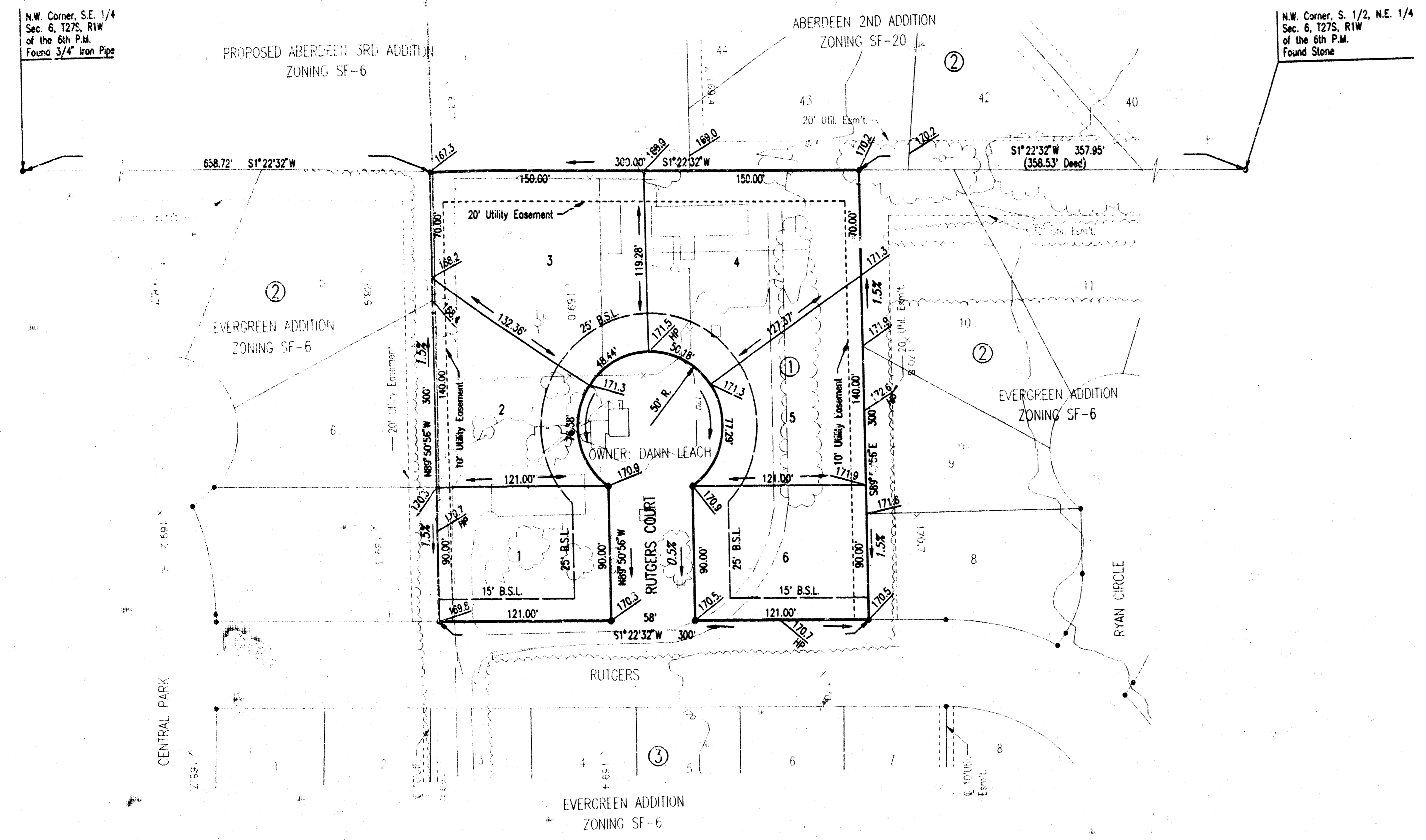


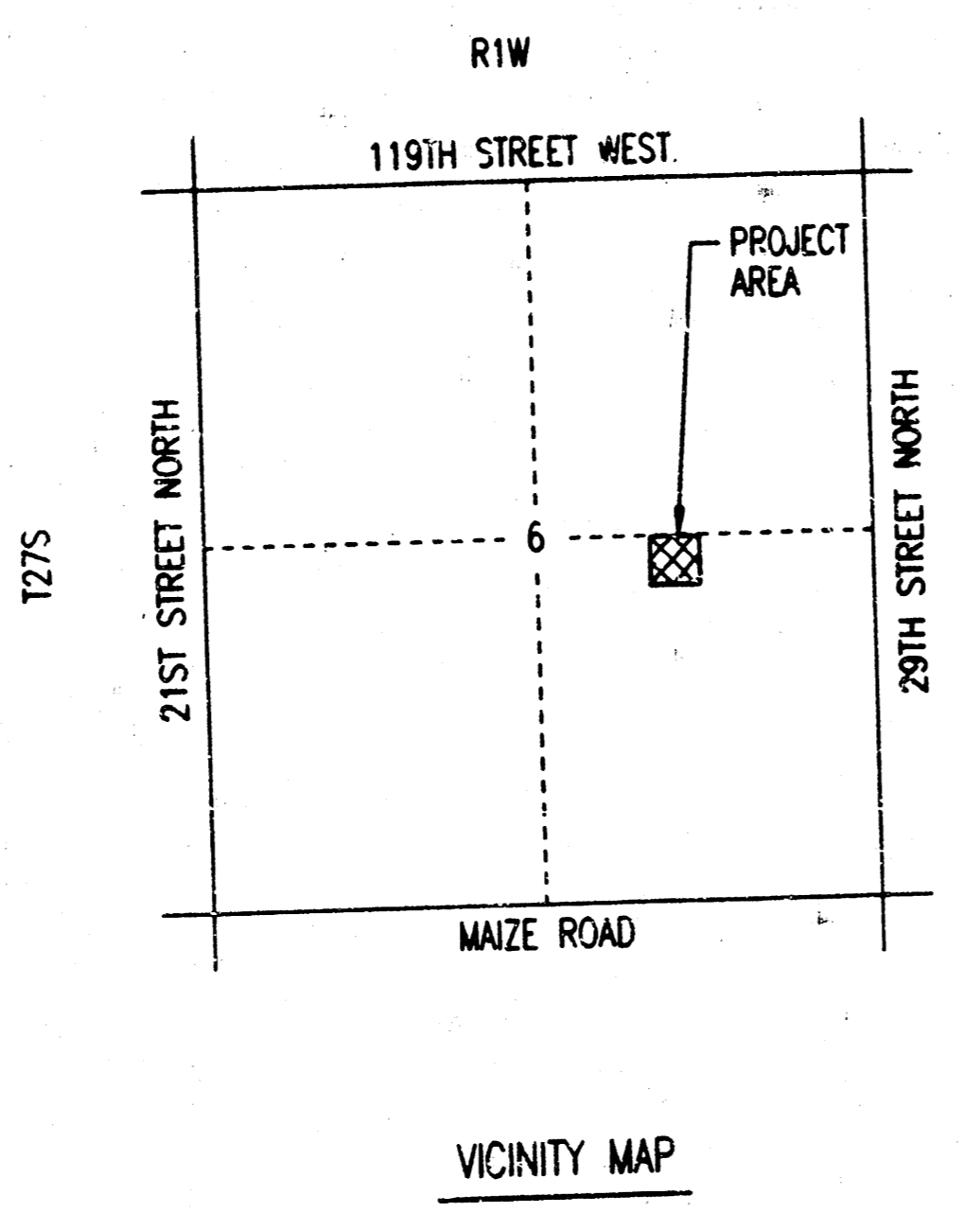
FOUR-CORNER GRADING PLAN EVERGREEN 2ND ADDITION TO WICHITA, SEDGWICK COUNTY, KANSAS



SCALE: 1" = 50'
DATE: 5-27-1999
TOPOGRAPHY: 6-15-93

• = IRON SET UNLESS NOTED OTHERWISE

B.M.: CITY OF WICHITA STD. BENCH MARK DISC 64" EAST AND 99" SOUTH OF THE INTERSECTION OF THE CENTERLINES MAIZE ROAD AND 21ST STREET NORTH.
ELEV.=164.3 CITY DATUM
ELEV.=1351.7 M.S.L.



EVERGREEN 2ND ADDN

APPROVED
CITY ENGINEER

USNR: KER OPER: GJM SCALE: 1"=50.00
 01:18:59 (39:44) EVERGREEN 2ND.dwg \drainage 09-28-1999 11:07:27 am