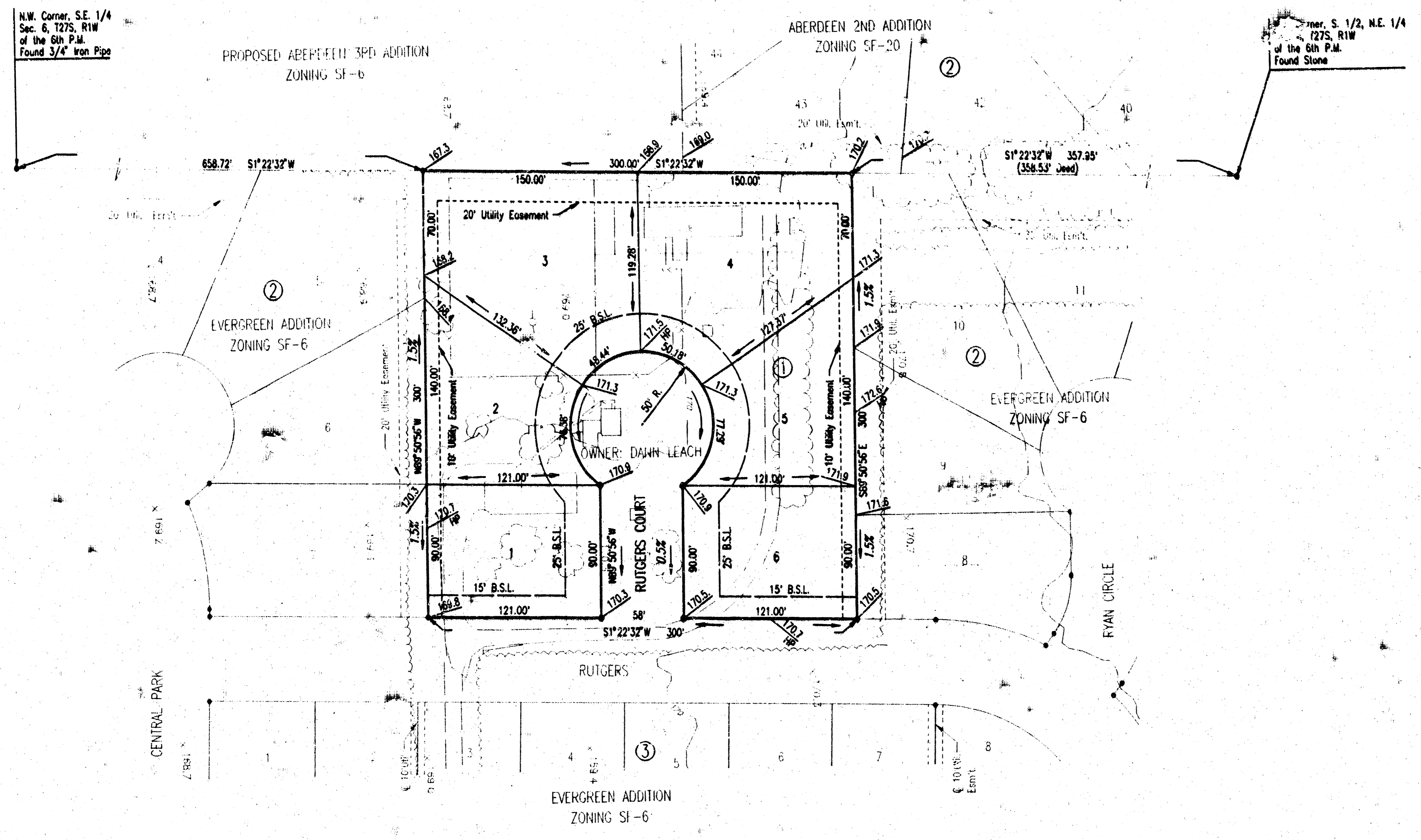


# FOUR-CORNER GRADING PLAN EVERGREEN 2ND ADDITION TO WICHITA, SEDGWICK COUNTY, KANSAS



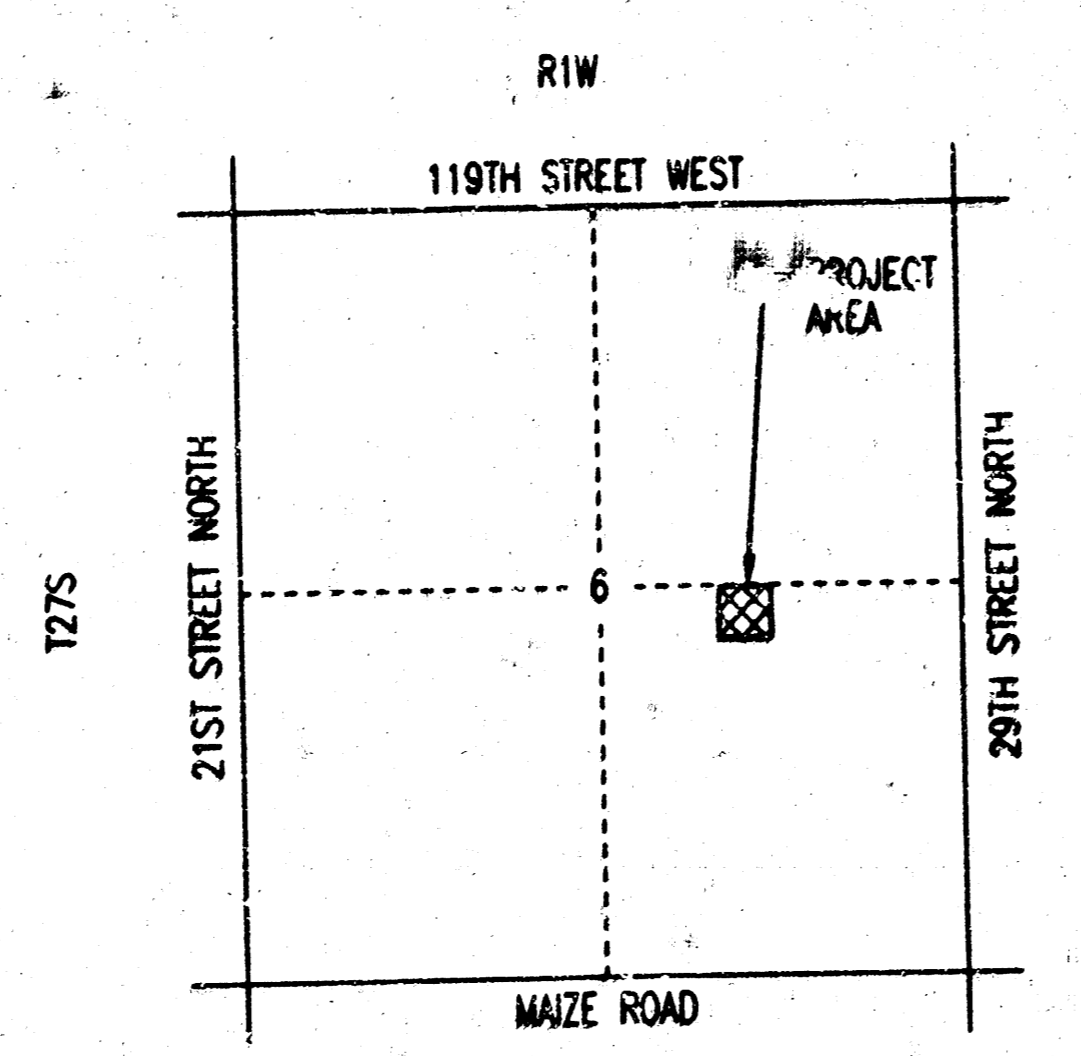
N.W. Corner, S.E. 1/4  
Sec. 6, T27S, R1W  
of the 6th P.M.  
Found 3/4" Iron Pipe

Corner, S. 1/2, N.E. 1/4  
T27S, R1W  
of the 6th P.M.  
Found Stone



SCALE: 1" = 50'  
DATE: 5-27-1999  
TOPOGRAPHY: 6-15-93  
● = IRON SET UNLESS NOTED OTHERWISE

B.M.: CITY OF WICHITA STD. BENCH MARK DISC 64" EAST AND 99" SOUTH  
OF THE INTERSECTION OF THE CENTERLINES MAIZE ROAD AND  
21ST STREET NORTH.  
ELEV.=164.3 CITY DATUM  
ELEV.=1351.7 M.S.L.



VICINITY MAP

DRAWN BY: DARR, GUN, SIZALL, T. 1-50.00  
G. 11995/09441/EVERGREEN 2ND ADDITION/Drainage 09-28-1999 11:07:27 am