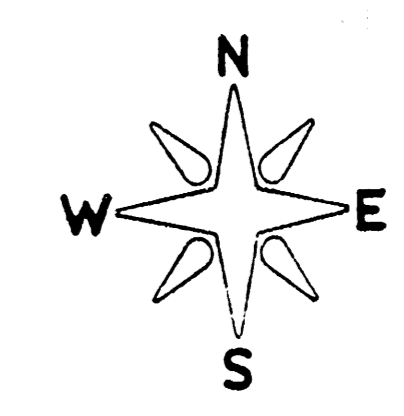


Fachner



1" = 20'

Legend -

- W = Water Main
- G = Gas Main
- SWS = Storm Water Sewer
- UP = Utility Pole
- GM = Gas Meter
- st = Spot Elevation
- OE = Overhead Electric
- TC = Top of Curb
- FL = Flow Line
- MH = Manhole
- SS = Sanitary Sewer

Benchmark -

BM on E. Curb of West St.
Opposite N.W. Prop. Cor.
Elev. 102.33 City Datum.

DRAINAGE PLAN
for
FACHNER ADDITION
TO WICHITA, SEDGWICK COUNTY,
KANSAS

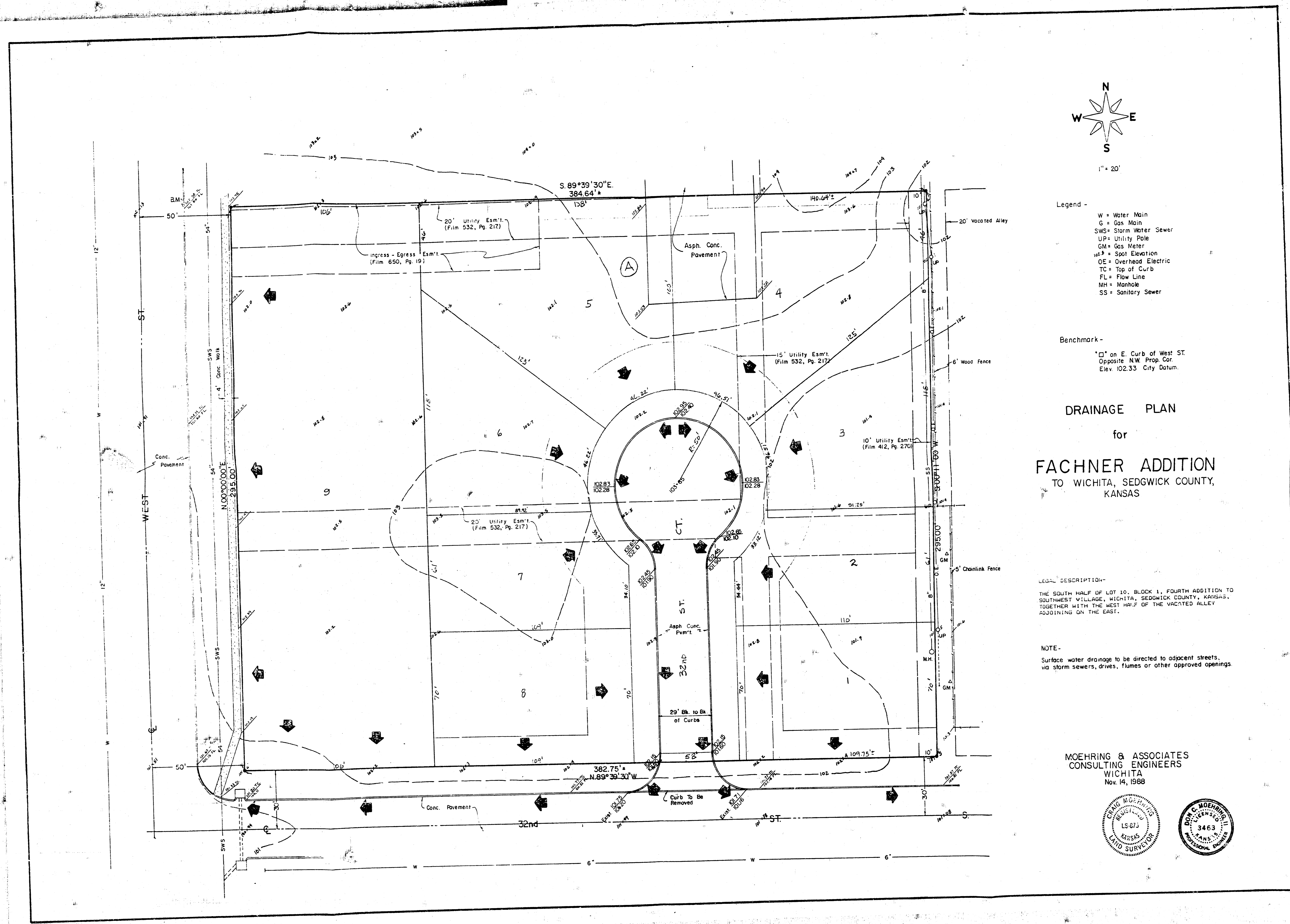
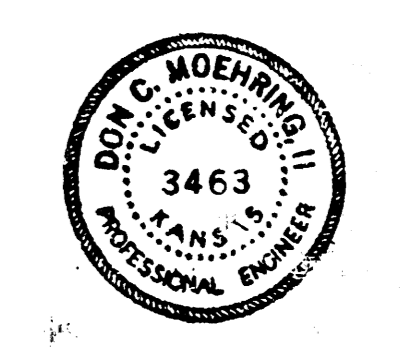
LEGAL DESCRIPTION -

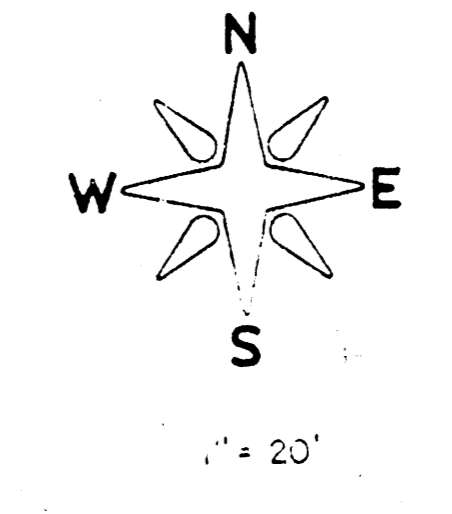
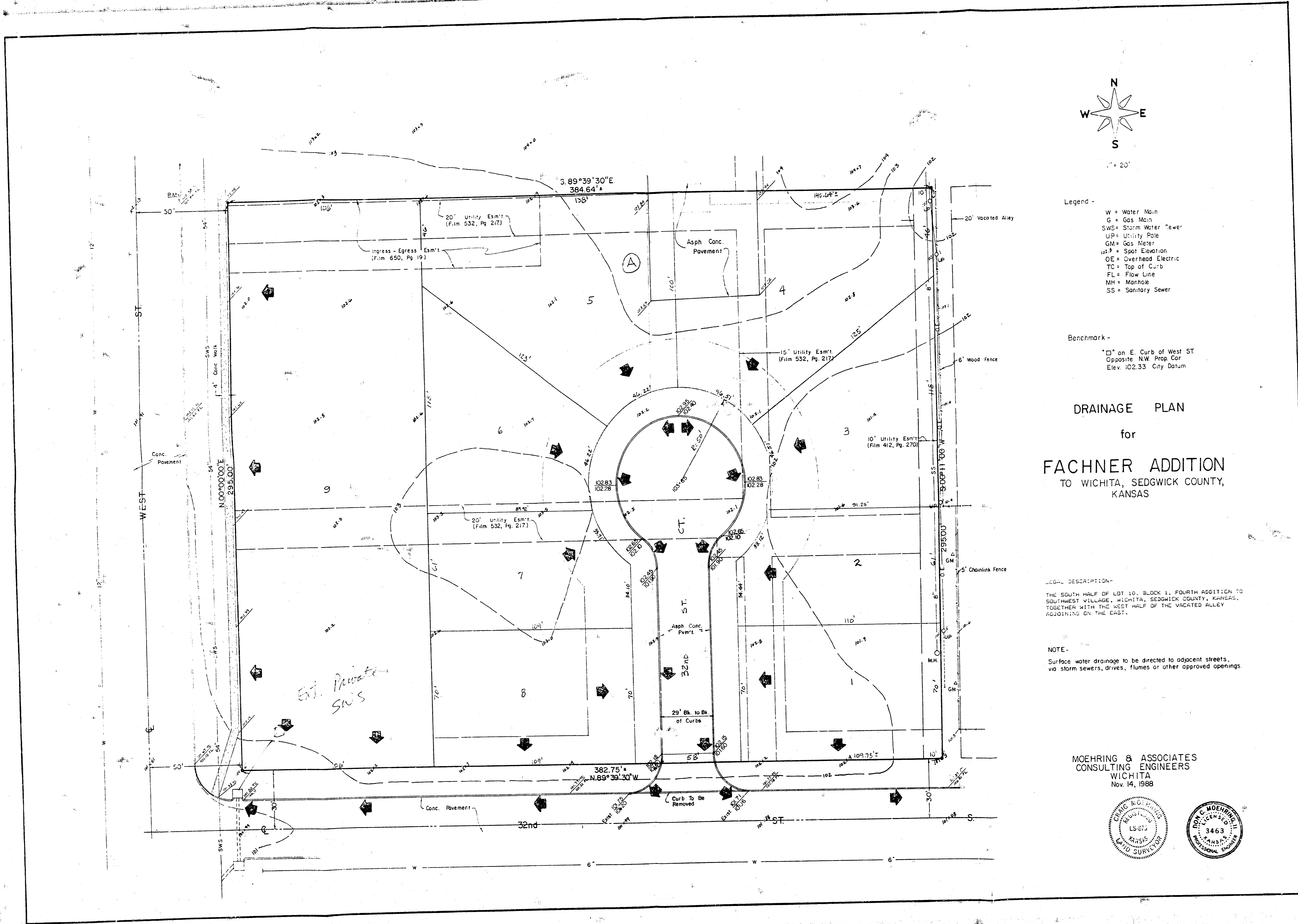
THE SOUTH HALF OF LOT 10, BLOCK 1, FOURTH ADDITION TO
SOUTHWEST VILLAGE, WICHITA, SEDGWICK COUNTY, KANSAS,
TOGETHER WITH THE WEST HALF OF THE VACATED ALLEY
ADJOINING ON THE EAST.

NOTE -

Surface water drainage to be directed to adjacent streets,
via storm sewers, drives, flumes or other approved openings.

MOEHRING & ASSOCIATES
CONSULTING ENGINEERS
WICHITA
Nov. 14, 1988





- Legend -
- W = Water Main
 - G = Gas Main
 - SWS = Storm Water Sewer
 - UP = Utility Pole
 - GM = Gas Meter
 - SP = Spot Elevation
 - OE = Overhead Electric
 - TC = Top of Curb
 - FL = Flow Line
 - MH = Manhole
 - SS = Sanitary Sewer

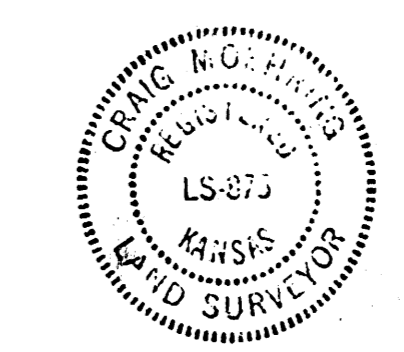
Benchmark -
 "□" on E. Curb of West St.
 Opposite NW Prop. Cor.
 Elev. 102.33 City Datum

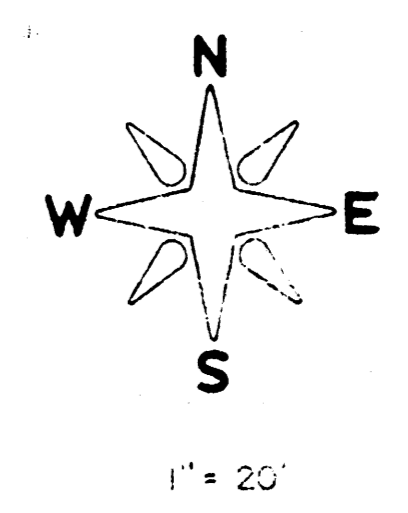
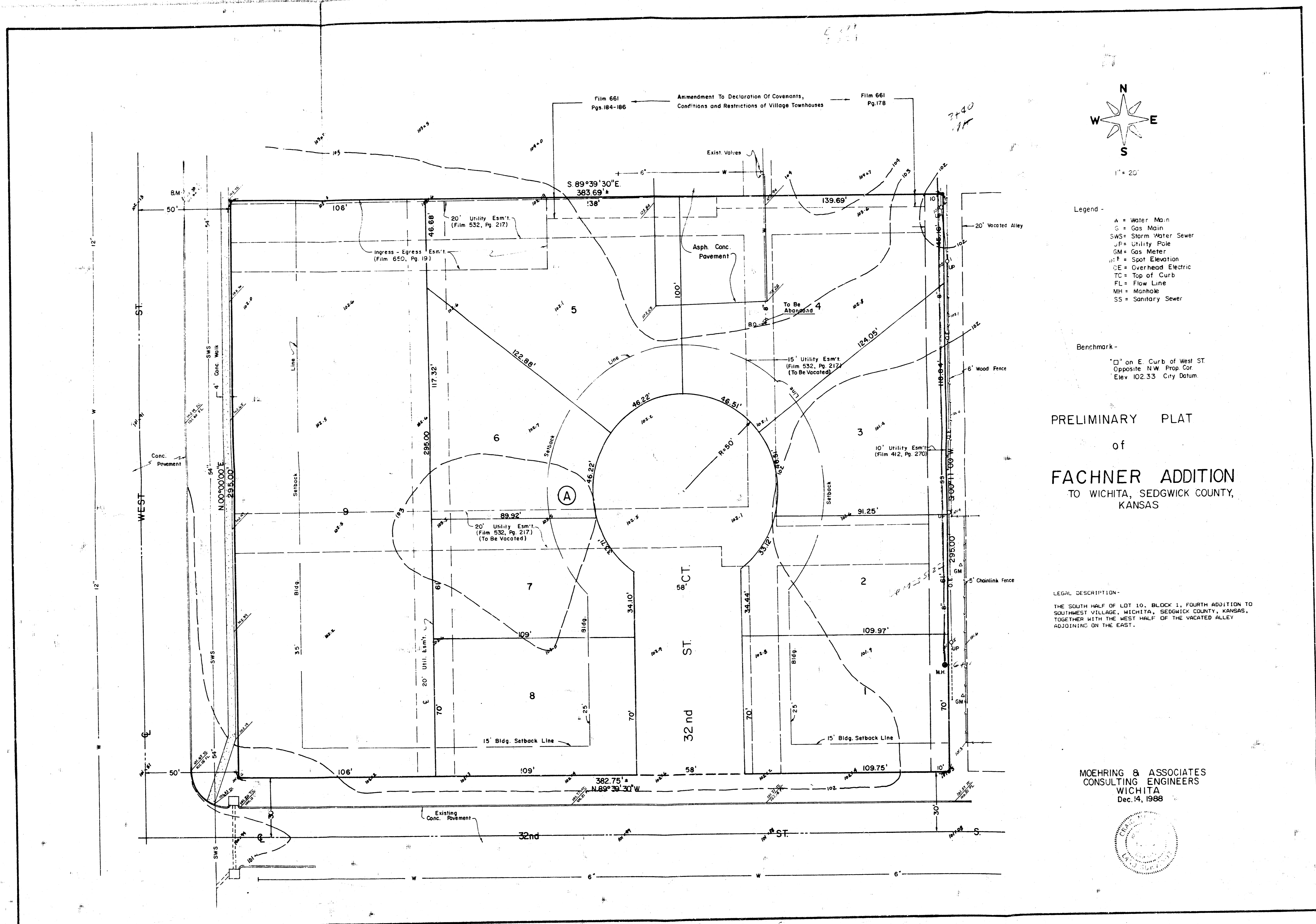
DRAINAGE PLAN
 for
FACHNER ADDITION
 TO WICHITA, SEDGWICK COUNTY,
 KANSAS

LEGAL DESCRIPTION -
 THE SOUTH HALF OF LOT 10, BLOCK 1, FOURTH ADDITION TO
 SOUTHWEST VILLAGE, WICHITA, SEDGWICK COUNTY, KANSAS,
 TOGETHER WITH THE WEST HALF OF THE VACATED ALLEY
 ADJOINING ON THE EAST.

NOTE -
 Surface water drainage to be directed to adjacent streets,
 via storm sewers, drives, flumes or other approved openings.

MOEHRING & ASSOCIATES
 CONSULTING ENGINEERS
 WICHITA
 Nov. 14, 1988





- Legend -
- A = Water Main
 - G = Gas Main
 - SWS = Storm Water Sewer
 - P = Utility Pole
 - GM = Gas Meter
 - E = Spot Elevation
 - OE = Overhead Electric
 - TC = Top of Curb
 - FL = Flow Line
 - MH = Manhole
 - SS = Sanitary Sewer

Benchmark -
 □ on E. Curb of West St
 Opposite N.W. Prop. Cor.
 Elev. 102.33 City Datum.

PRELIMINARY PLAT
 of
FACHNER ADDITION
 TO WICHITA, SEDGWICK COUNTY,
 KANSAS

LEGAL DESCRIPTION -
 THE SOUTH HALF OF LOT 10, BLOCK 1, FOURTH ADDITION TO
 SOUTHWEST VILLAGES, WICHITA, SEDGWICK COUNTY, KANSAS,
 TOGETHER WITH THE WEST HALF OF THE VACATED ALLEY
 ADJOINING ON THE EAST.

MOEHRING & ASSOCIATES
 CONSULTING ENGINEERS
 WICHITA
 Dec. 14, 1988

