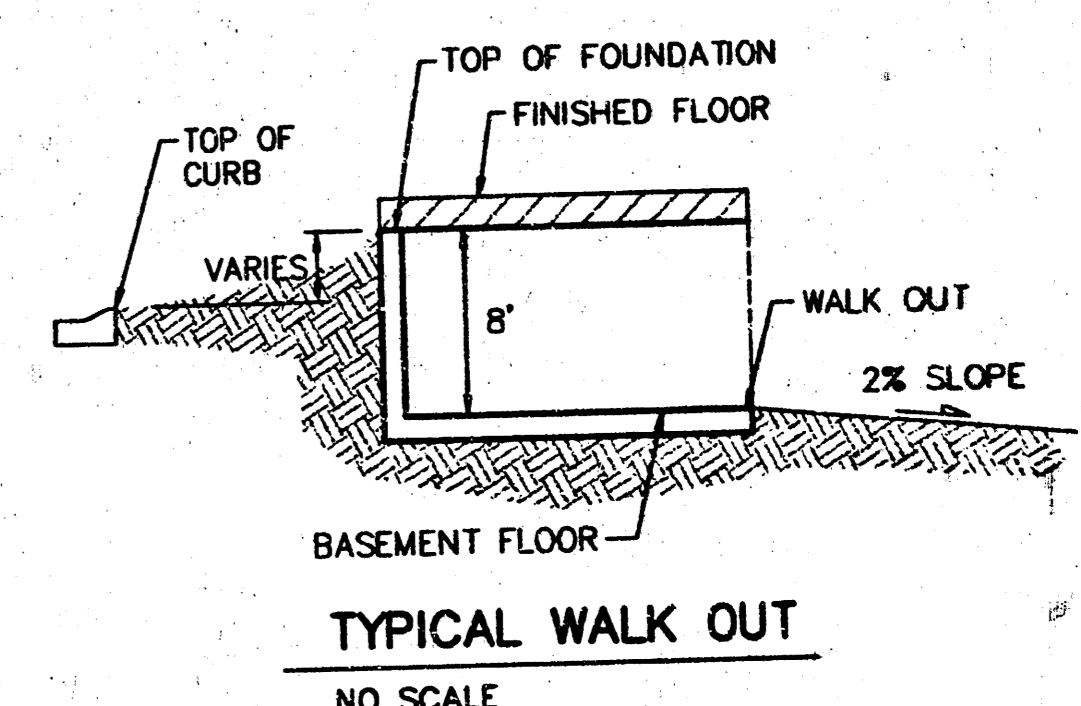
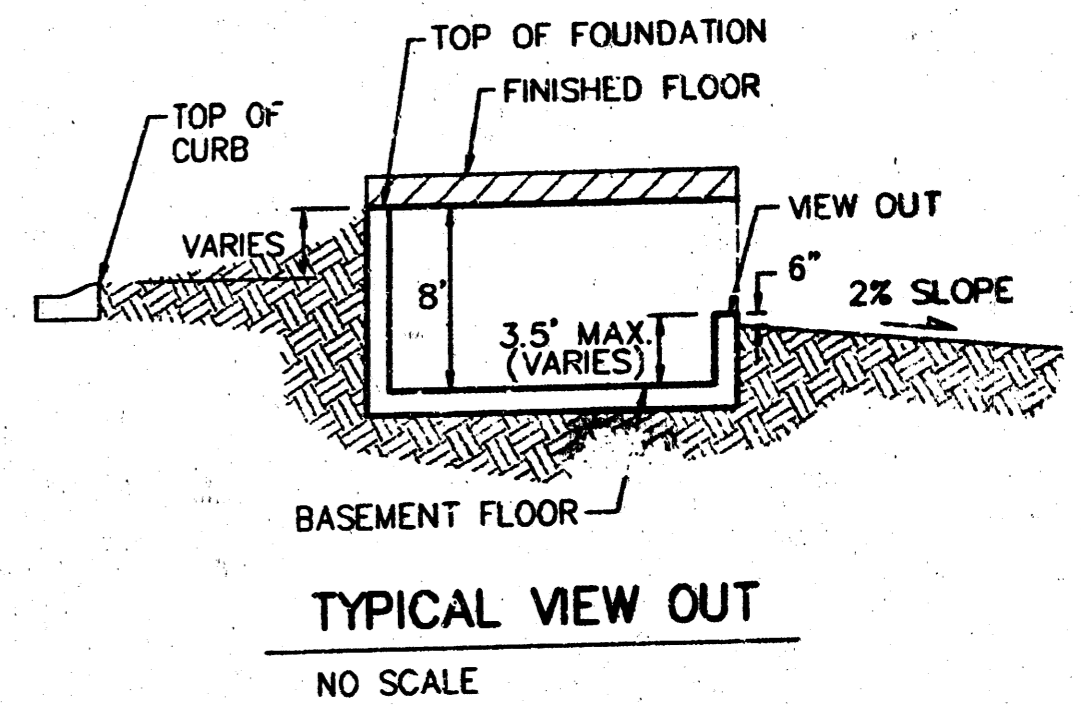


# APPROVED DRAINAGE PLAN

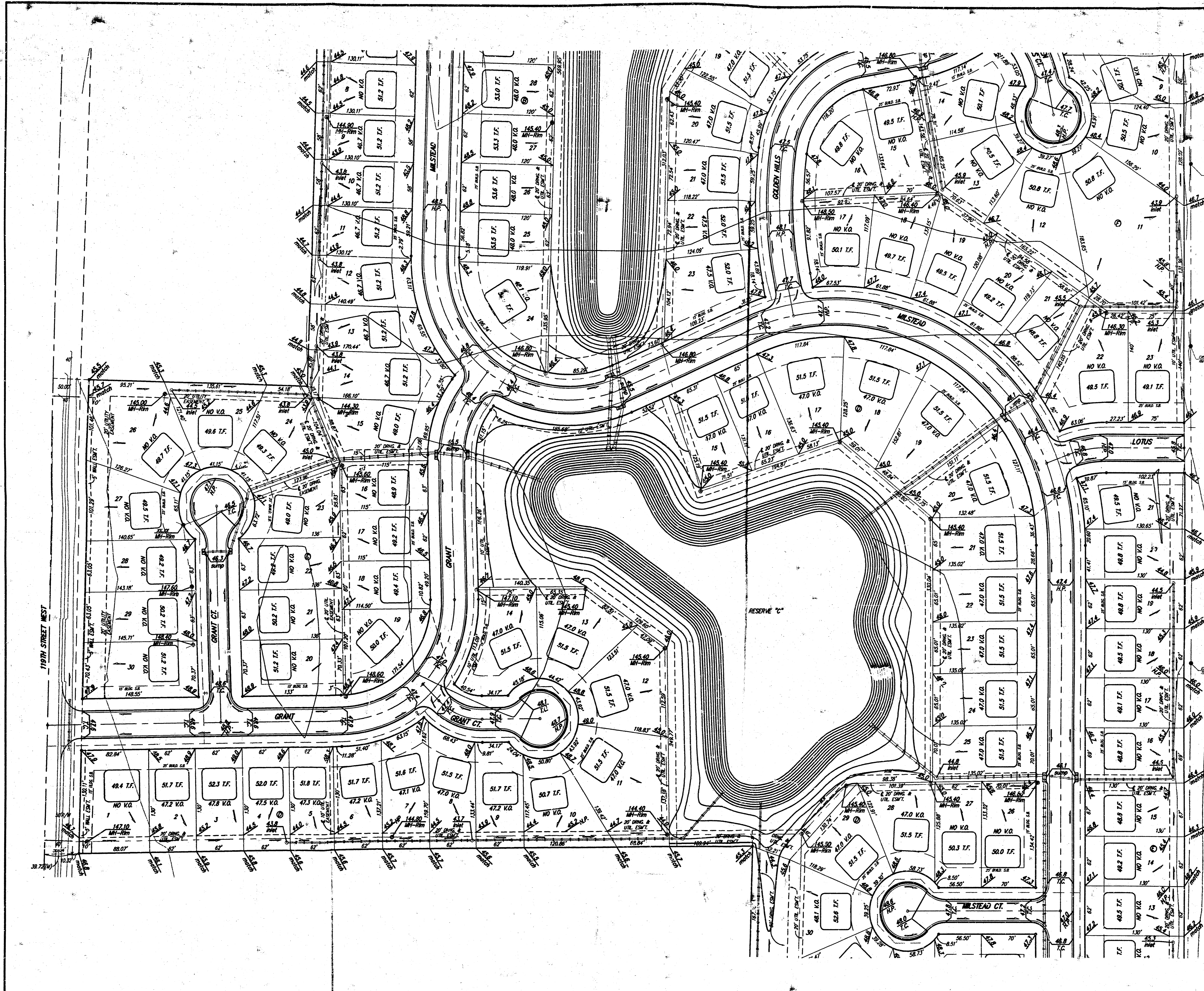


REVISED 3-24-03 BY AEG  
 REVISED LOTS 4-6, BLK F & LOT 1, BLK D 1/20/03 BY AEG  
 REVISED LOTS 8 & 11, BLK F 1/8/03 BY AEG  
 REVISED 8/19/02 BY AEG PER NBW  
 Rev. Lots 1-21, Blk A, 04/02/2001 BLG

**FLAT CREEK ADDITION GRADING PLAN**  
 WICHITA, KANSAS

**BAUGHMAN COMPANY P.A.**  
 ENGINEERING, SURVEYING, & PLANNING  
 316-262-7271 • 315 ELLIS • WICHITA, KANSAS 672-1

DESIGN	NGM/BLG	DRAWN	BLG	APPROVED	DATE	SCALE	SHEET
					04/27/01	NOTED	1 OF 3



SCALE:  
1" = 60'  
• = IRON

**BENCHMARK**  
City of Wichita Benchmark Disc.  
located North and East of the intersection  
of 119th St. West and Pownee.  
Elev. = 148.68 City Datum  
= 1336.08 NGVD

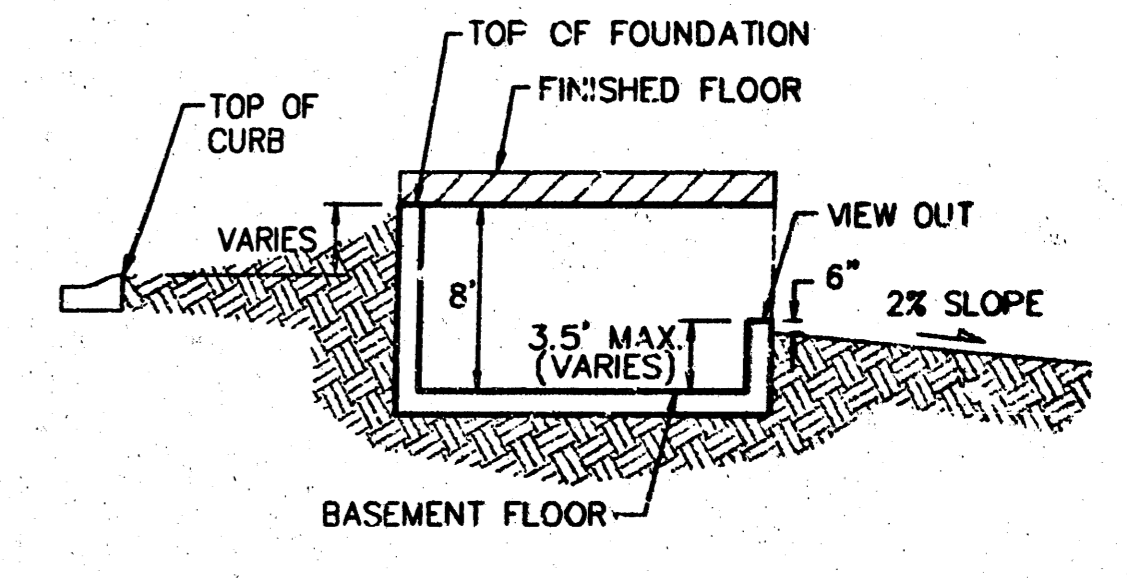
**NOTE:**  
Maximum building pad elevation  
for the lowest opening to the  
structures on all lots in this  
subdivision shall be 146.7 city  
datum (1334.1 NGVD).

**NOTE:**  
All lots within Flat Creek Addition  
shall have a 5 foot interior  
sidyard setback.

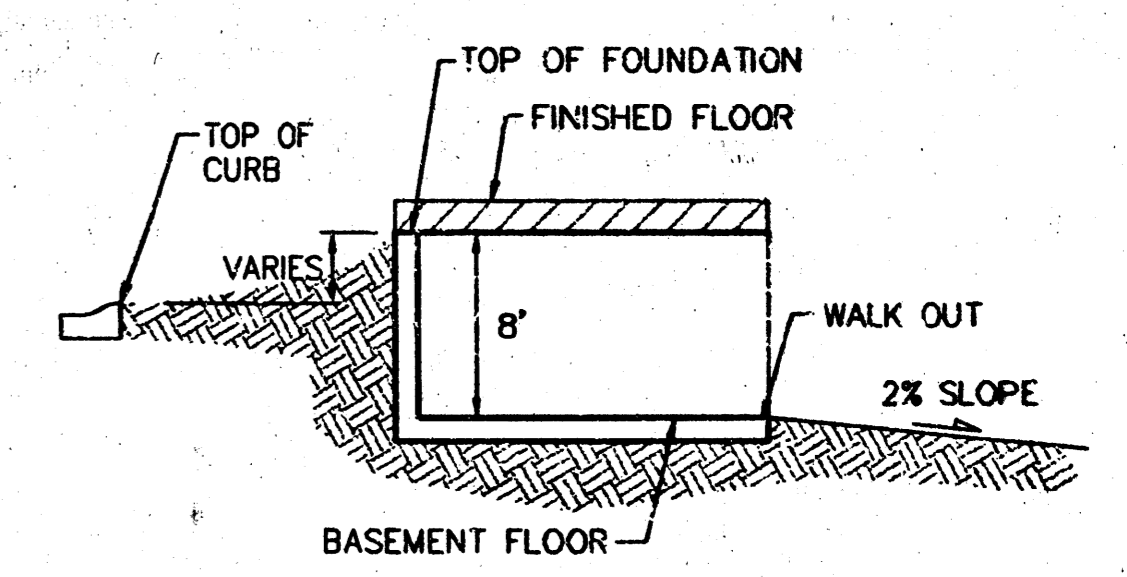
**NOTE:**  
Proposed top of foundation are shown  
on plans. Contractor to set finish floor  
elevation.

All street elevations shown on plans  
are for top of curb (full height).

View-out elevations are denoted as  
XXX V.O.  
Walk-out elevations are denoted as  
XXX W.O.  
CONTOUR INTERVAL = 1 FT.



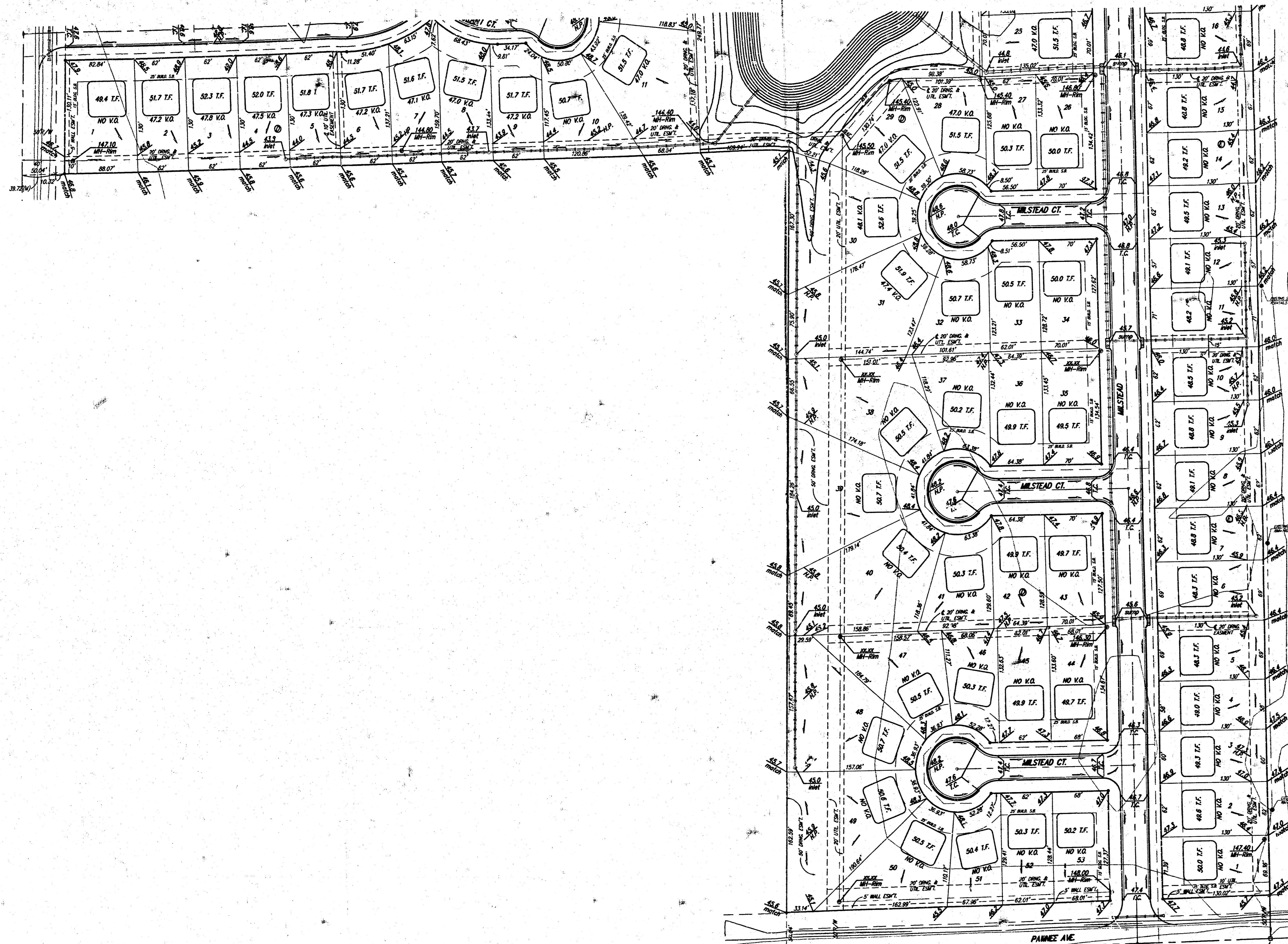
**TYPICAL VIEW OUT**  
NO SCALE



**TYPICAL WALK OUT**  
NO SCALE

REVISED 3-24-03 BY AEG  
REVISED LOTS 4-6, BLK F & LOT 1, BLK D 1/20/03 BY AEG  
REVISED LOTS 8 & 11, BLK F 1/18/03 BY AEG  
REVISED 2/19/02 BY AEG PER NEM

<b>FLAT CREEK ADDITION</b>	
<b>GRADING PLAN</b>	
WICHITA, KANSAS	
<b>BAUGHMAN COMPANY P.A.</b>	
ENGINEERING, SURVEYING, & PLANNING	
315-262-7271 • 315 ELLIS • WICHITA, KANSAS 67211	
PROJECT NUMBER	
DESIGN NHW, BLG	DRAWN BLG
APPROVED	DATE 04/27/07
SCALE NOTED	SHEET 2 OF 8



SCALE:  
1" = 60'  
• = IRN

**BENCHMARK**  
City of Wichita Benchmark Disc.  
located North and East of the intersection  
of 119th St. West and Pawnee.  
Elev. = 143.69 City Datum  
= 1336.08 NGVD

**NOTE:**  
Minimum building pad elevation  
for the lowest opening to the  
structures on all lots in this  
subdivision shall be 145.7 city  
datum (1334.1 NGVD).

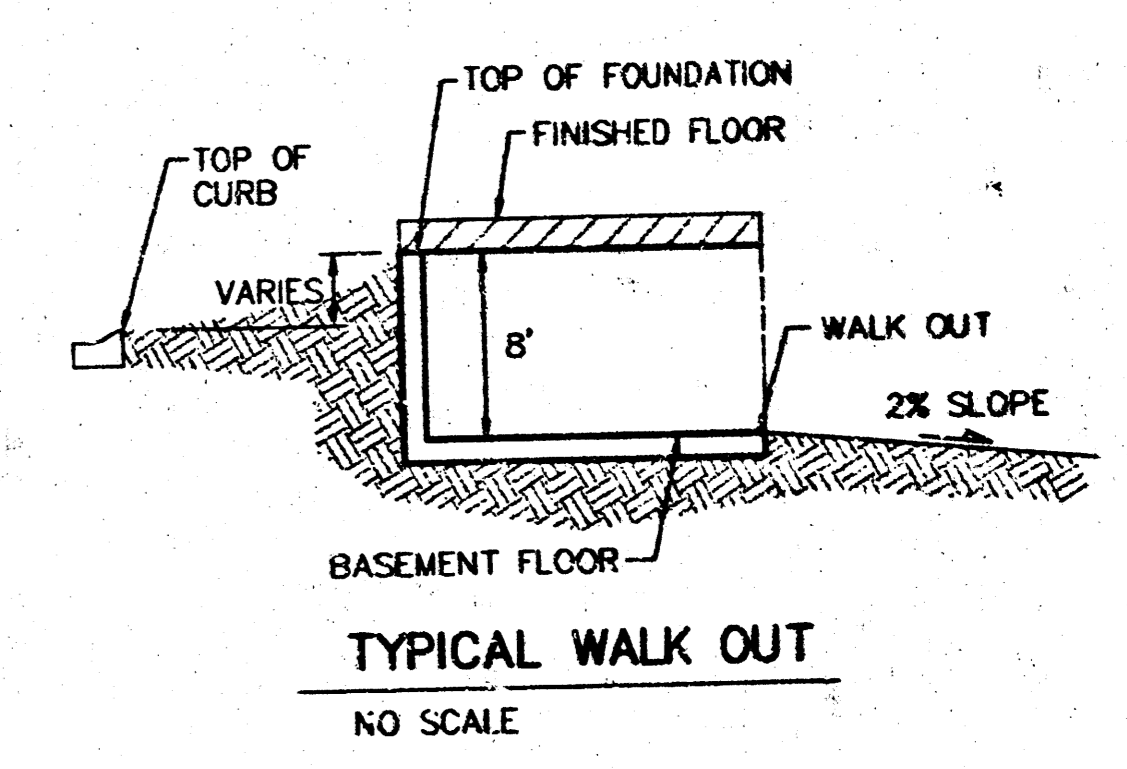
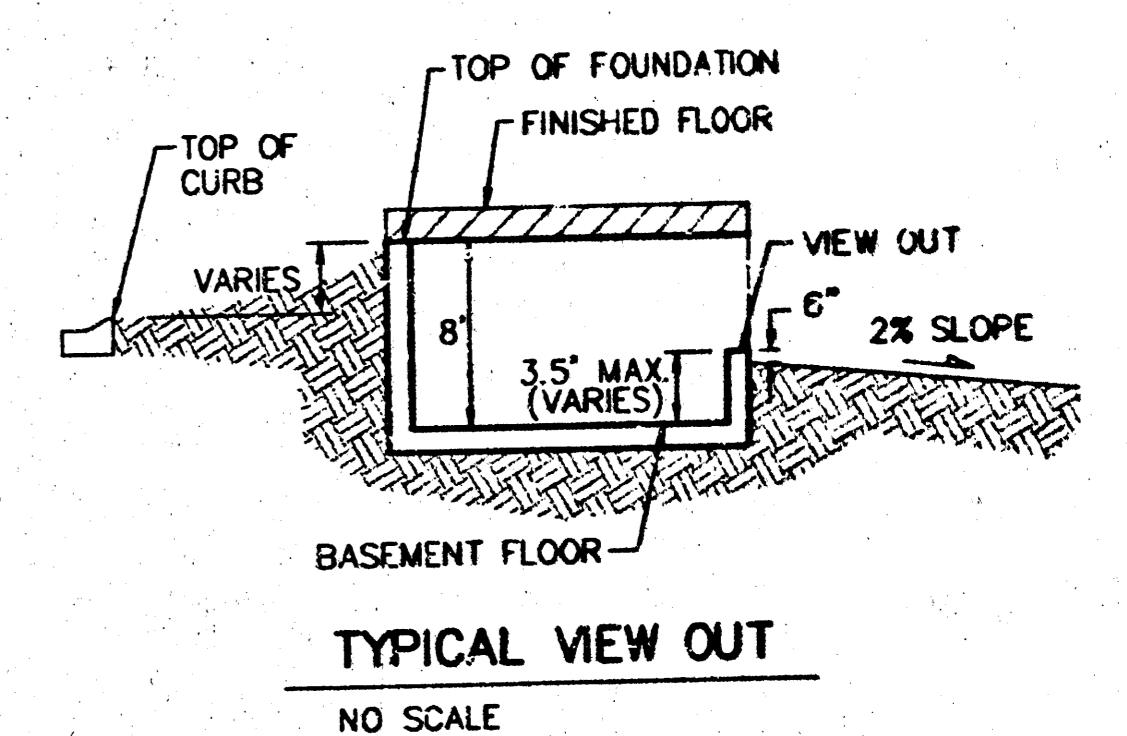
**NOTE:**  
All lots within Flat Creek Addition  
shall have a 5 foot interior  
sidewalk setback.

**NOTE:**  
Proposed top of foundation are shown  
on plans. Contractor to set finish floor  
elevation.

All street elevations shown on plans  
are for top of curb (full height).

View-out elevations are denoted as  
XX.X V.O.  
Walk-out elevations are denoted as  
XX.X W.O.

CONTOUR INTERVAL = 1 FT.



REVISED 3-24-03 BY AEG  
REVISED LOTS 4-6, BLK E & LOT 1, BLK D 1/20/03 BY AEG  
REVISED 8/19/02 BY AEG P/R NEW

**FLAT CREEK ADDITION**  
**GRADING PLAN**  
WICHITA, KANSAS

**BAUGHMAN COMPANY P.A.**  
ENGINEERING, SURVEYING, & PLANNING  
316-262-7273 • 315 ELLIS • WICHITA, KANSAS 67211

PROJECT NUMBER		SHEET	
DESIGN		3	
DESIGN	DRAWN	APPROVED	DATE
NEW/BLG	BLG	BLG	04/27/01
SCALE		NOTED	
		3	

SE COR. COVT. LOT 4, 391/4  
SEC. 31, TWP. 27-S, R.1-W