

**APPROVED
DRAINAGE PLAN**

SSMH
RIM=144.42
E=128.32(E)
E=128.42(N)

SCALE:
1" = 60'
• = IRON

BENCHMARK
City of Wichita Benchmark Disc.
located North and East of the intersection
of 119th St. West and Pawnee.
Elev. = 148.68 City Datum
= 1336.08 NGVD

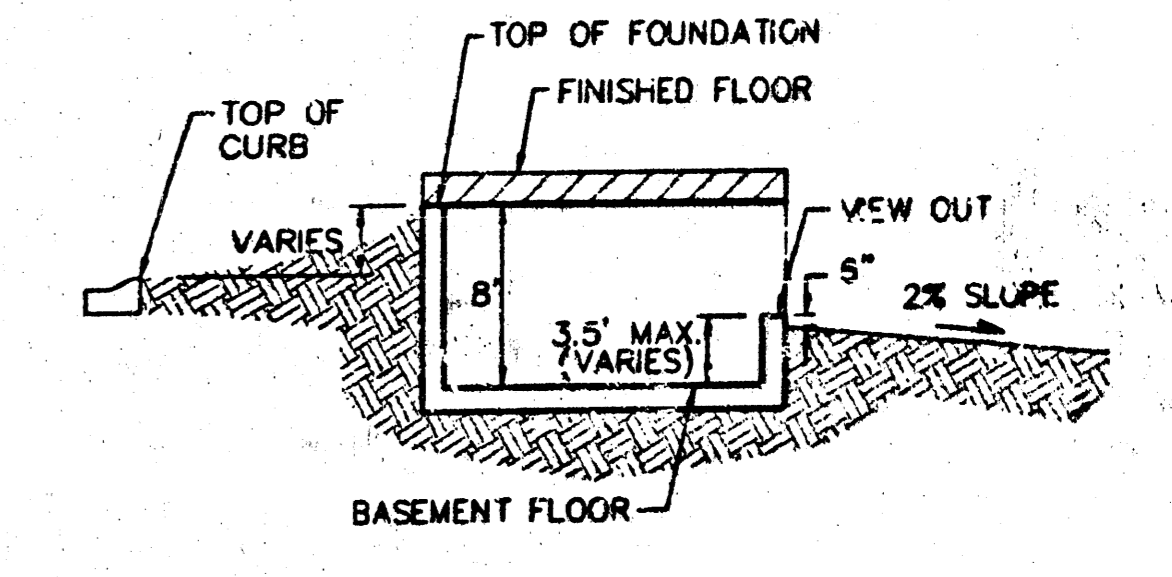
NOTE:
Minimum building pad elevation
for the lowest opening in the
structures on all lots in this
subdivision shall be 146.7 city
datum (1334.1 NGVD).

NOTE:
All lots within Flat Creek Addition
shall have a 5 foot interior
sidewalk setback.

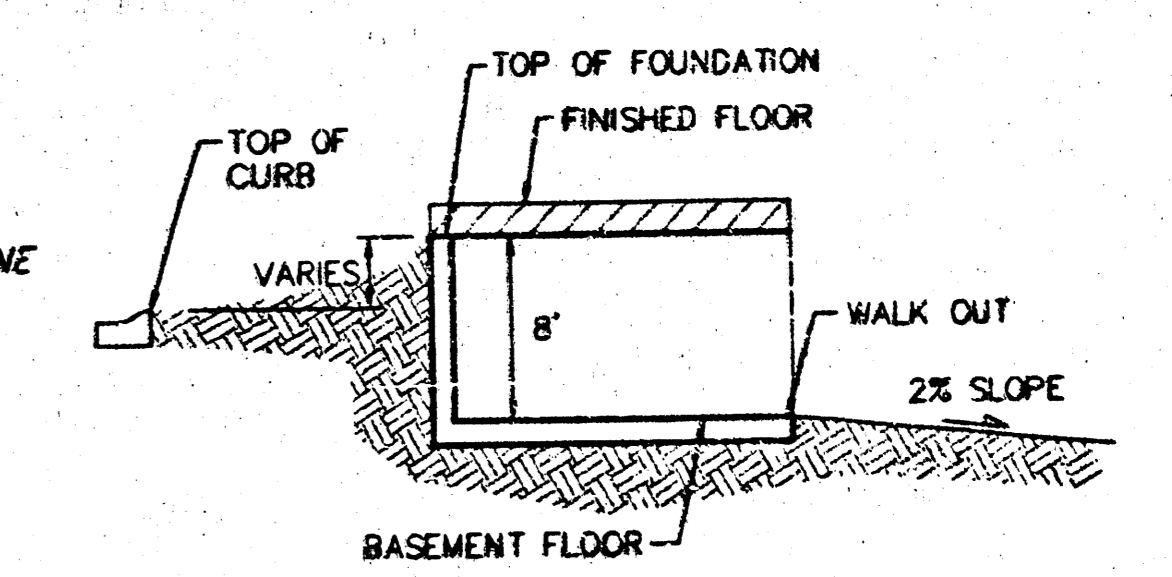
NOTE:
Proposed top of foundation are shown
on plans. Contractor to set finish floor
elevation.

All street elevations shown on plans
are for top of curb (full height).

View-out elevations are denoted as
XX.X V.O.
Walk-out elevations are denoted as
XX.X W.O.
CONTOUR INTERVAL = 1 FT.



TYPICAL VIEW OUT
NO SCALE



TYPICAL WALK OUT
NO SCALE

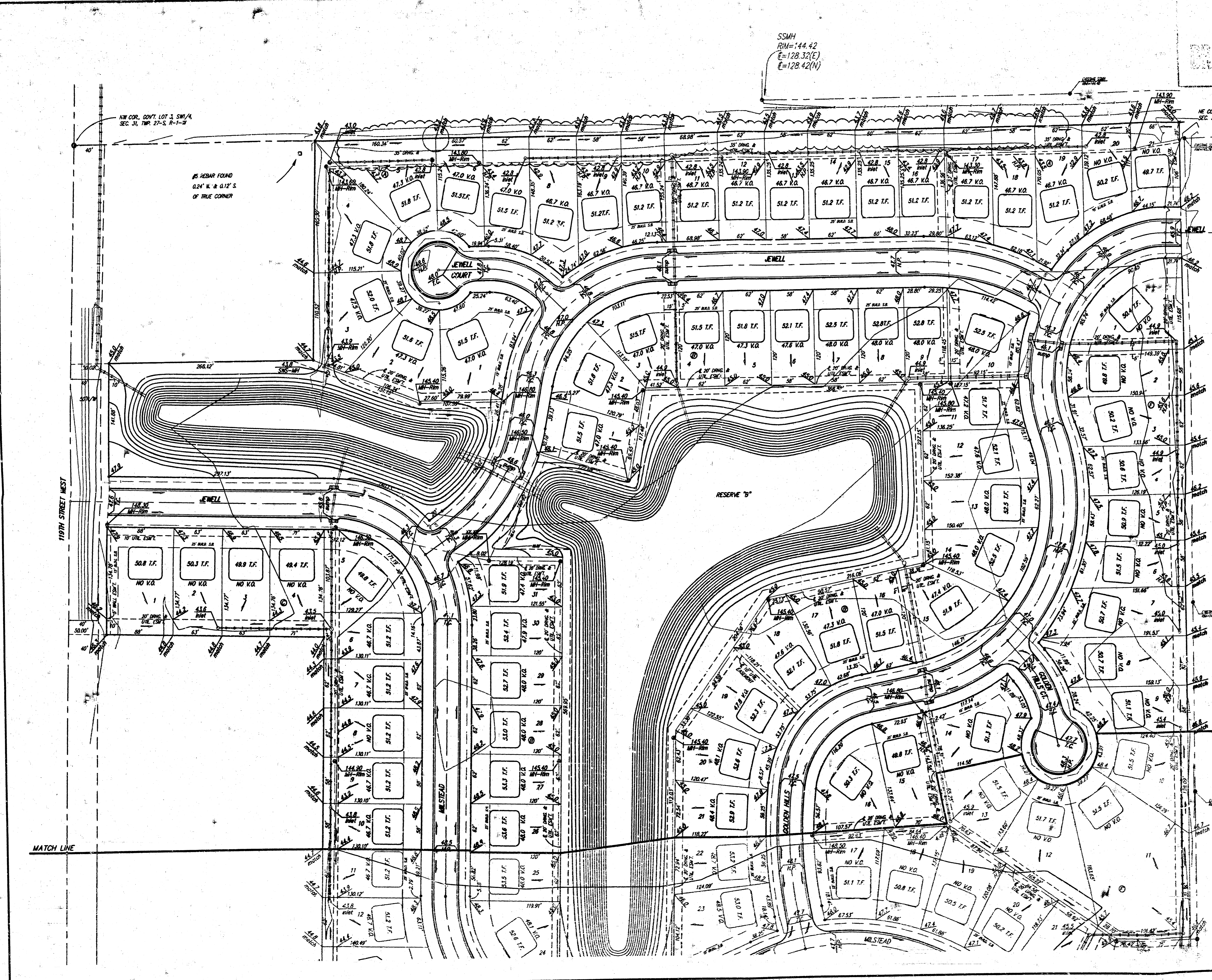
Rev. Lote 1 - 27, DR. A, 04Dec2009 BLG

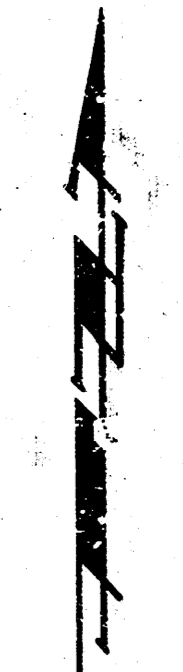
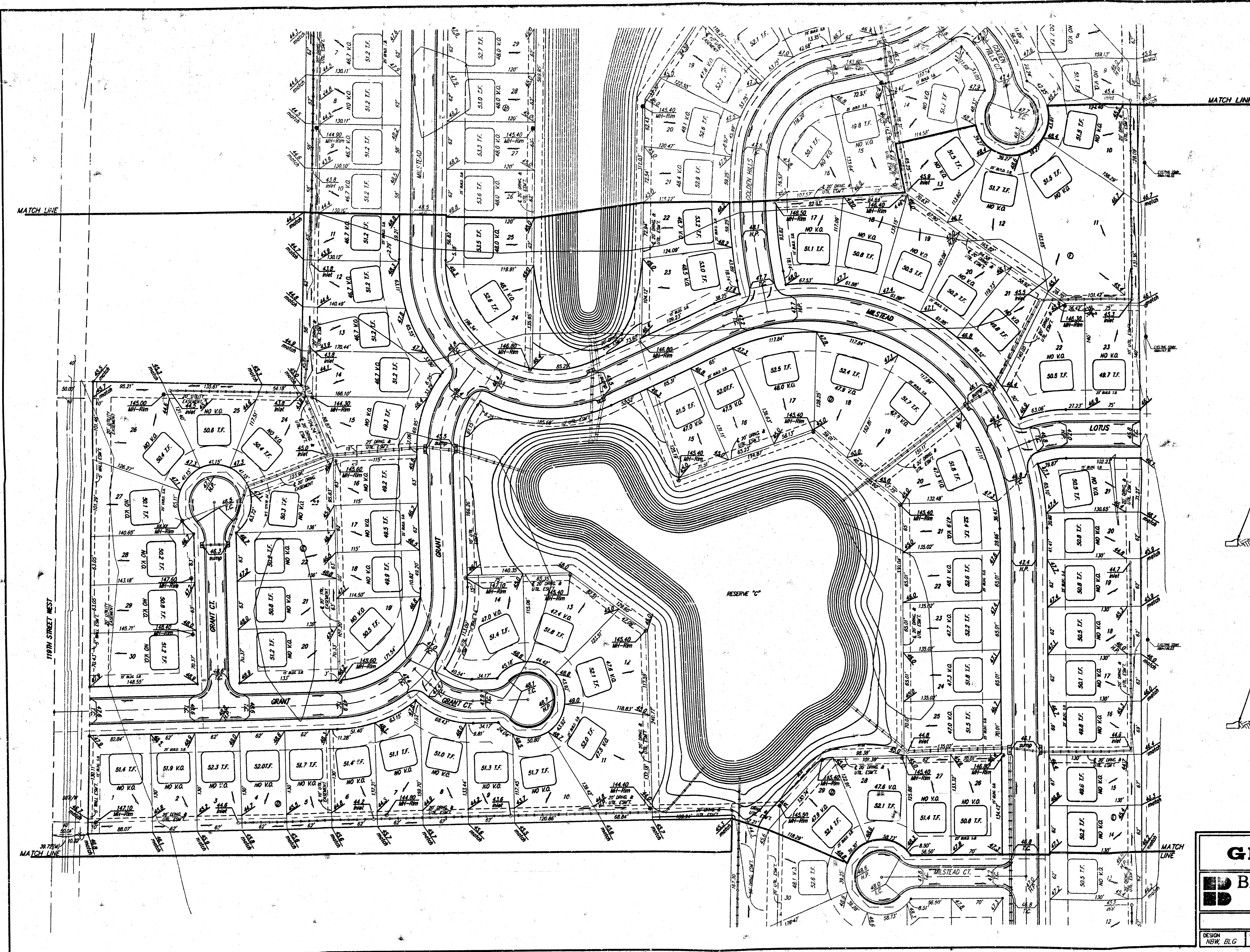
**FLAT CREEK ADDITION
GRADING PLAN**
WICHITA, KANSAS

BAUGHMAN COMPANY P.A.
ENGINEERING, SURVEYING, & PLANNING
316-762-7231 • 315 ELLIS • WICHITA, KANSAS 67211

DESIGN NGW,BLG	DRAWN BLG	APPROVED	DATE 04/27/07	SCALE NOTED	SHEET 1
					OF 3

PLAT CARDS MARKED FROM 2002 NEW DRAINAGE RETURNS





SCALE:
1" = 60'
= IRON

BENCHMARK
City of Wichita Benchmark Disc.
located North and East of the intersection
of 119th St. West and Pawnee.
Elev. = 148.68 City Datum
= 1336.08 NGVD

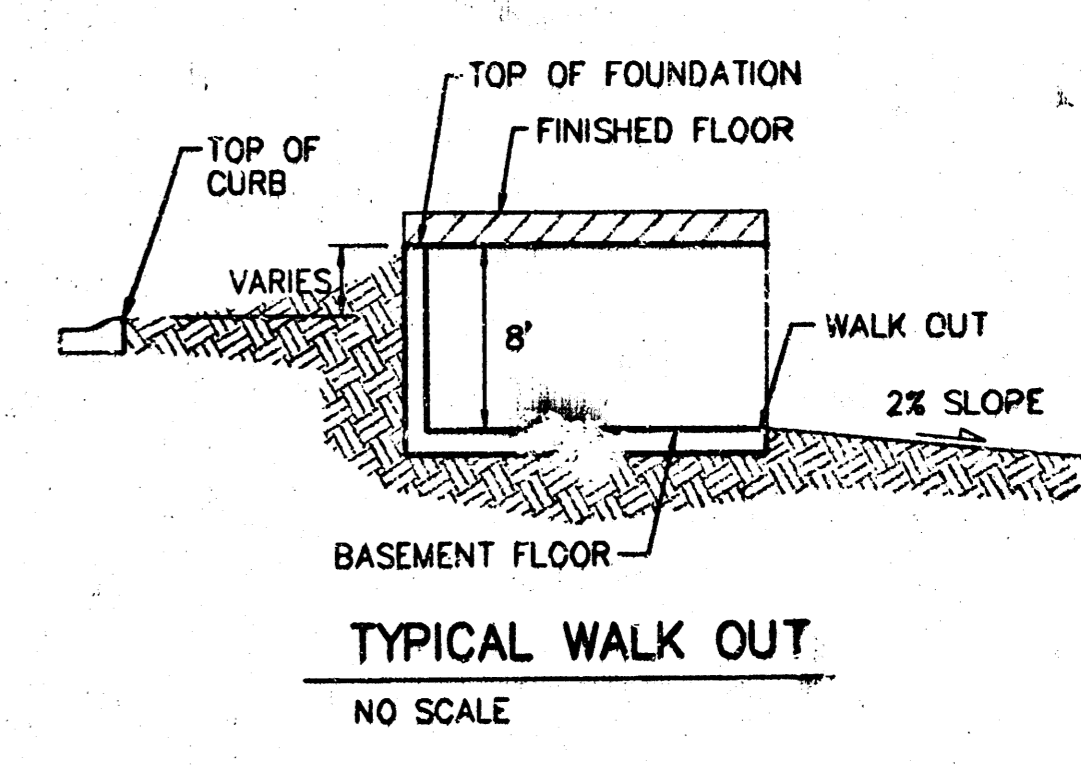
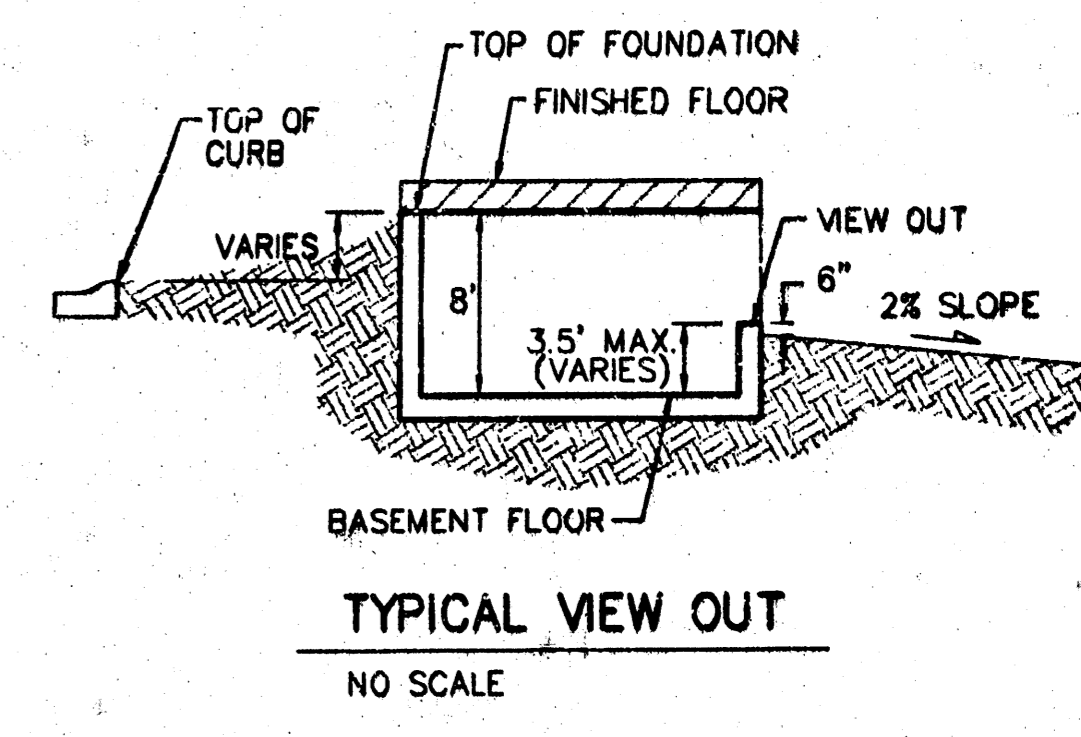
NOTE:
Minimum building pad elevation
for the lowest opening to the
structures on all lots in this
subdivision shall be 145.7 city
datum (1334.1 NGVD).

NOTE:
All lots within Flat Creek Addition
shall have a 3 foot interior
sideyard setback.

NOTE:
Proposed top of foundation are shown
on plans. Contractor to set finish floor
elevation.

All street elevations shown on plans
are for top of curb (full height).

View-out elevations are denoted as
XX.X V.O.
Walk-out elevations are denoted as
XX.X W.O.
CONTOUR INTERVAL = 1 FT.

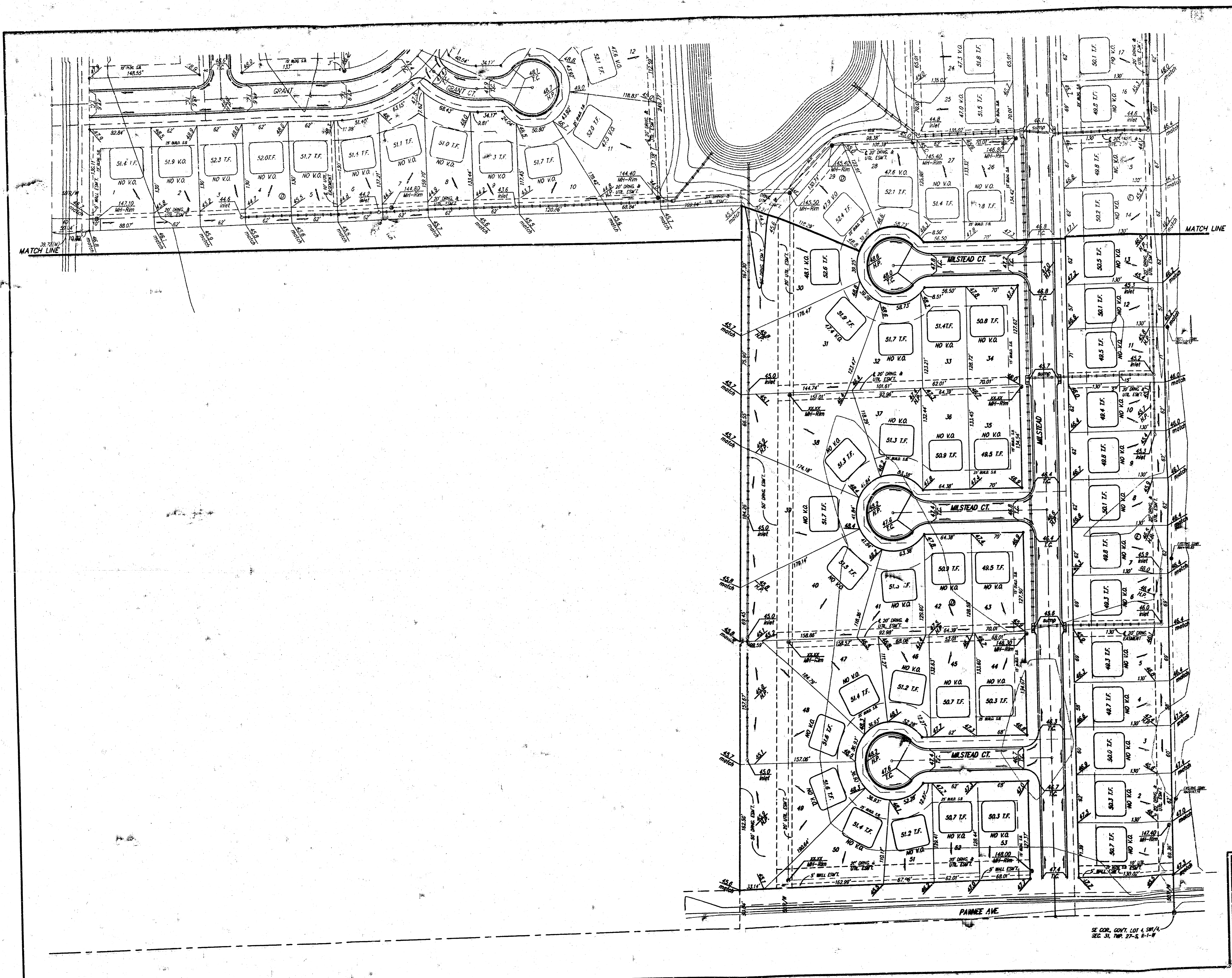


FLAT CREEK ADDITION
GRADING PLAN
WICHITA, KANSAS

BAUGHMAN COMPANY P.A.
ENGINEERING, SURVEYING, & PLANNING
315-262-7271 • 315 ELLIS • WICHITA, KANSAS 67211

DESIGN NEW, BLG	DRAWN BLG	APPROVED	DATE 04/27/01	SCALE NOTED	SHEET 3
--------------------	--------------	----------	------------------	----------------	------------

PROJECT NUMBER



SCALE:
1" = 60'
• = IRON

BENCHMARK
City of Wichita Benchmark Disc.
located North and East of the intersection
of 119th St. West and Pannoe.
Elev = 148.65 City Datum
= 1336.08 NGVD

NOTE:
Minimum building pad elevation
for the lowest opening to the
structures on all lots in this
subdivision shall be 146.7 city
datum (1334.1 NGVD).

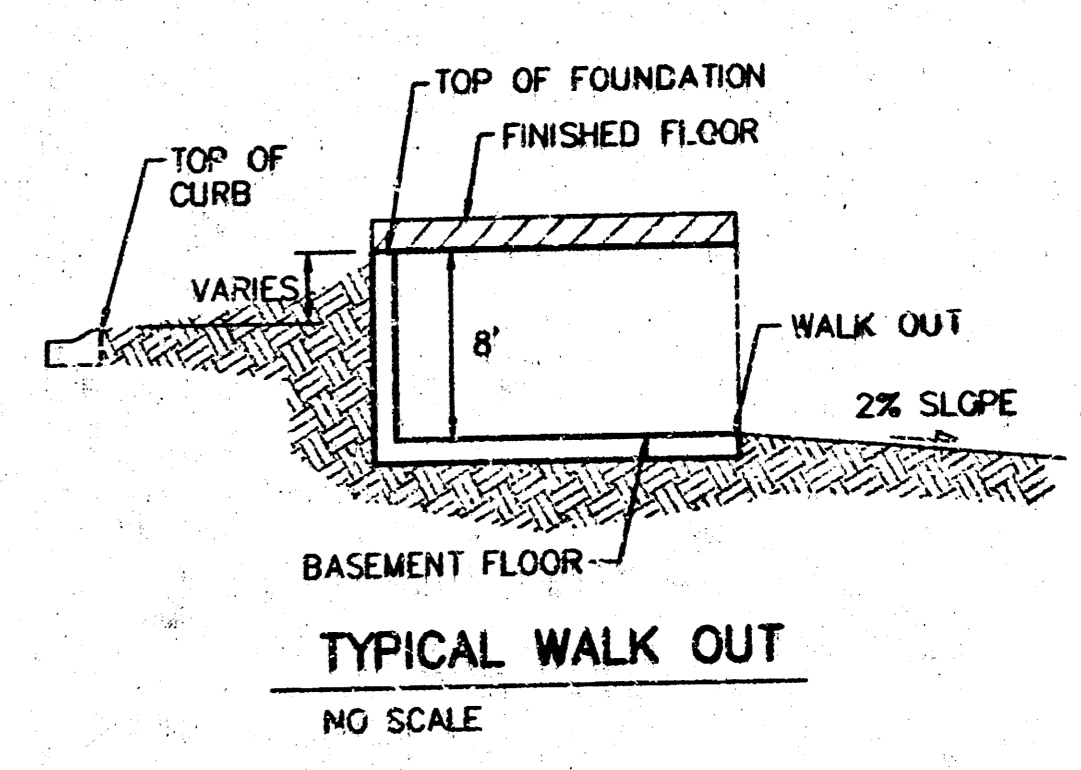
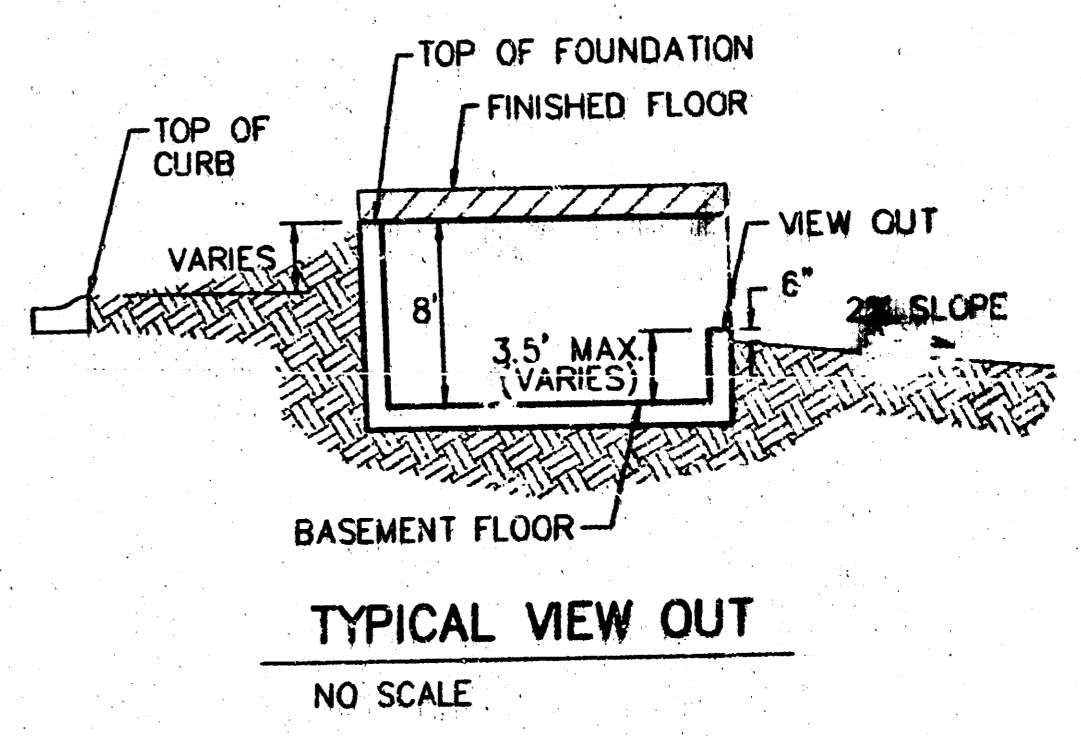
NOTE:
All lots within Flat Creek Addition
shall have a 5 foot interior
sidyard setback.

NOTE:
Proposed top of foundation are shown
on plans. Contractor to set finish floor
elevation.

All street elevations shown on plans
are for top of curb (full height).

View-out elevations are denoted as
XX.X V.O.
Walk-out elevations are denoted as
XX.X W.O.

CONTOUR INTERVAL = 1 FT.



**FLAT CREEK ADDITION
GRADING PLAN**
WICHITA, KANSAS

BAUGHMAN COMPANY P.A.
ENGINEERING, SURVEYING, & PLANNING
316-282-7271 • 315 E. LUIS • WICHITA, KANSAS 67211

PROJECT NUMBER

DESIGN MBW/BLC	DRAWN BLC	APPROVED	DATE 04/27/01	SCALE NOTED	SHEET 3 OF 3
-------------------	--------------	----------	------------------	----------------	-----------------------

SE COR. GOV'T LOT 4, 50th N.
2E 31. 7th 27-5 6-1-8