

FOREST LAKES ADDITION TO SEDGWICK COUNTY, KANSAS

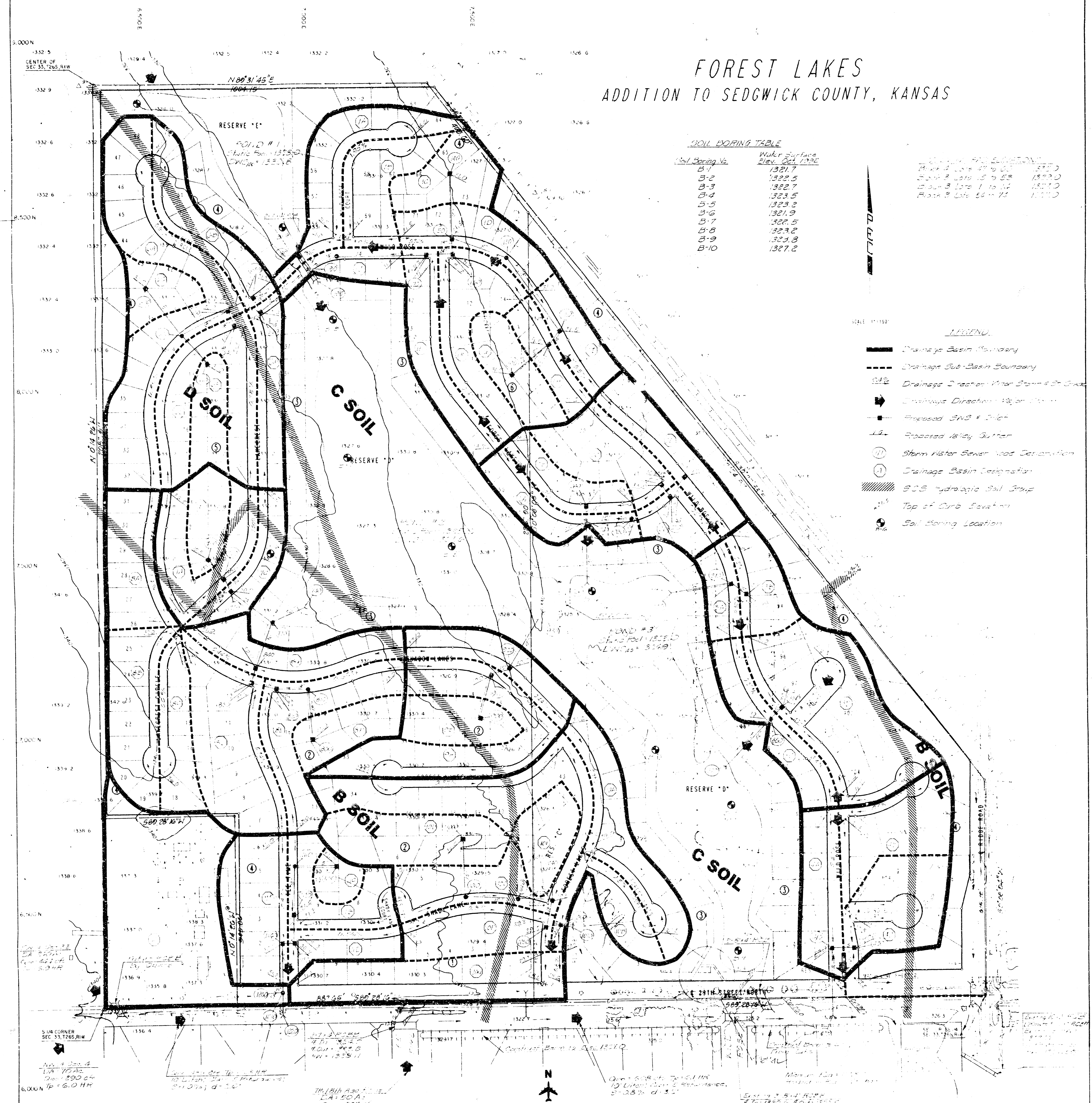
SOIL EXPOSURE TABLE

Soil Boring No.	Water Surface Elev. Oct. 1932
B-1	1321.7
B-2	1322.5
B-3	1322.7
B-4	1323.5
B-5	1323.5
B-6	1321.9
B-7	1321.5
B-8	1323.2
B-9	1323.8
B-10	1327.2

SOIL SURVEY ELEVATIONS

Block 1 Lots 41 to 50	1327.0
Block 2 Lots 15 to 25	1320.0
Block 3 Lots 1 to 10	1321.0
Block 3 Lots 26 to 35	1321.0

- LEGEND**
- Drainage Basin Boundary
 - Drainage Sub-Basin Boundary
 - Drainage Direction Near Storm S. or Creek
 - Drainage Direction Near Storm S. or Creek
 - Proposed SWS # 1 or 2
 - Proposed 16' Sidy Gutter
 - Storm Water Sewer Lead Termination
 - Drainage Basin Designation
 - SCS Hydrologic Soil Group
 - Top of Curb Elevation
 - Soil Boring Location



S UN CORNER
SEC 33, 1265, RW

N 01° 14' 26" W
100.00'

N 01° 14' 26" W
100.00'

N 01° 14' 26" W
100.00'

1/4" (1/8" App. 1/16")
L.A. 20' 0"
Curb 2' 0" 0"
T.P. 6.0' 0"

N

TOPOGRAPHIC MAP OF LAND LOCATED IN
THE QUARTER SECTION 33, 1265, 11/16
SEDGWICK COUNTY, KANSAS

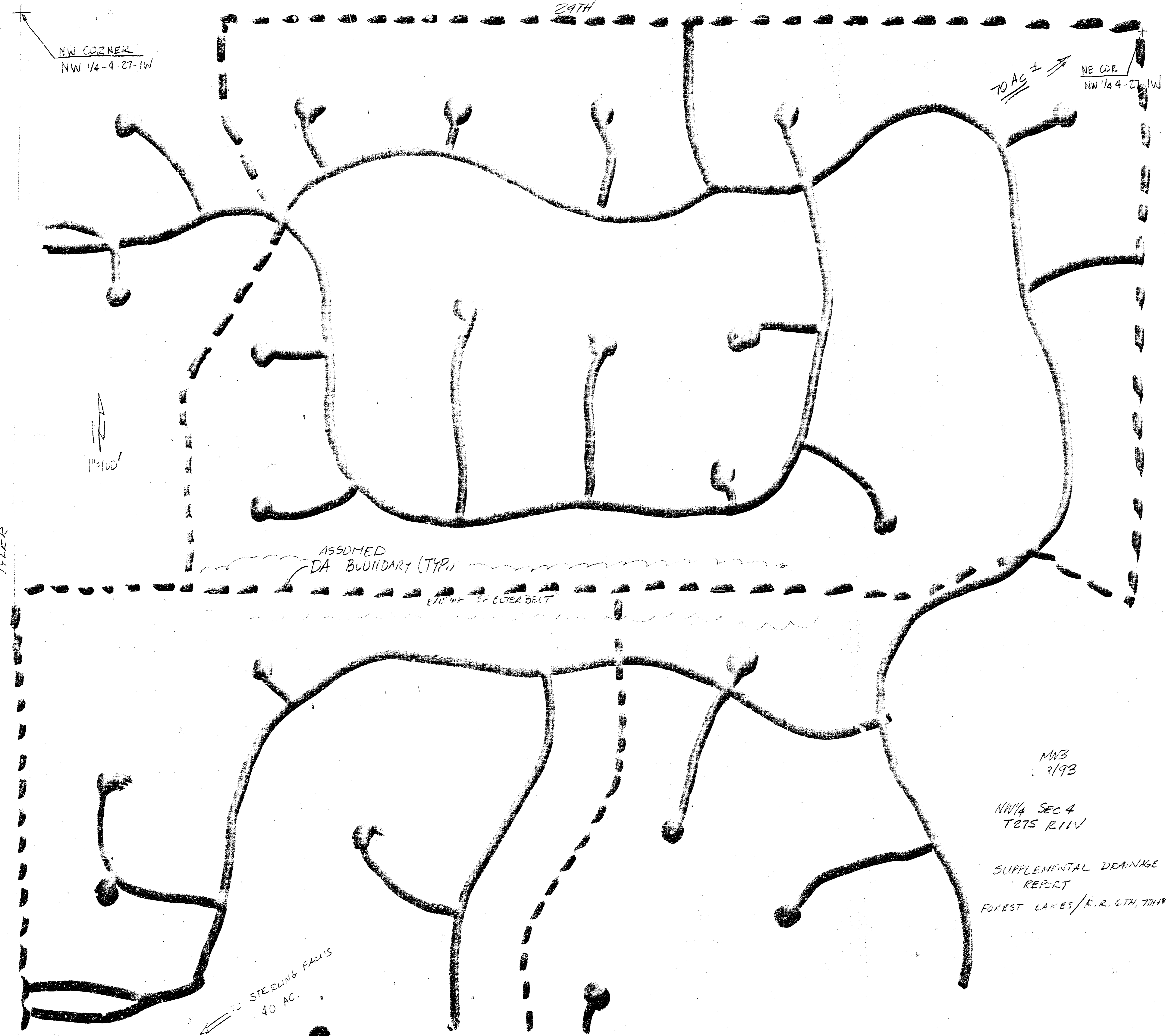
SURVEYING & ENGINEERING
PROFESSIONAL ENGINEERING CONSULTANTS, P.A.
100 S. YORK ST., WICHITA, KS 67202

100 200 300



No.	Revision	By	Date

**DRAINAGE PLAN
FOREST LAKES**



NW CORNER
NW 1/4-4-27-1W

29TH

70 AC

NE COR
NW 1/4-4-27-1W

1"=100'

TYLER

ASSUMED
DA BOUNDARY (TYP.)

EXISTING SP. CULVERT

TO STEELING FARMS
40 AC.

MNB
2/93

NW 1/4 SEC 4
T87S R.11W

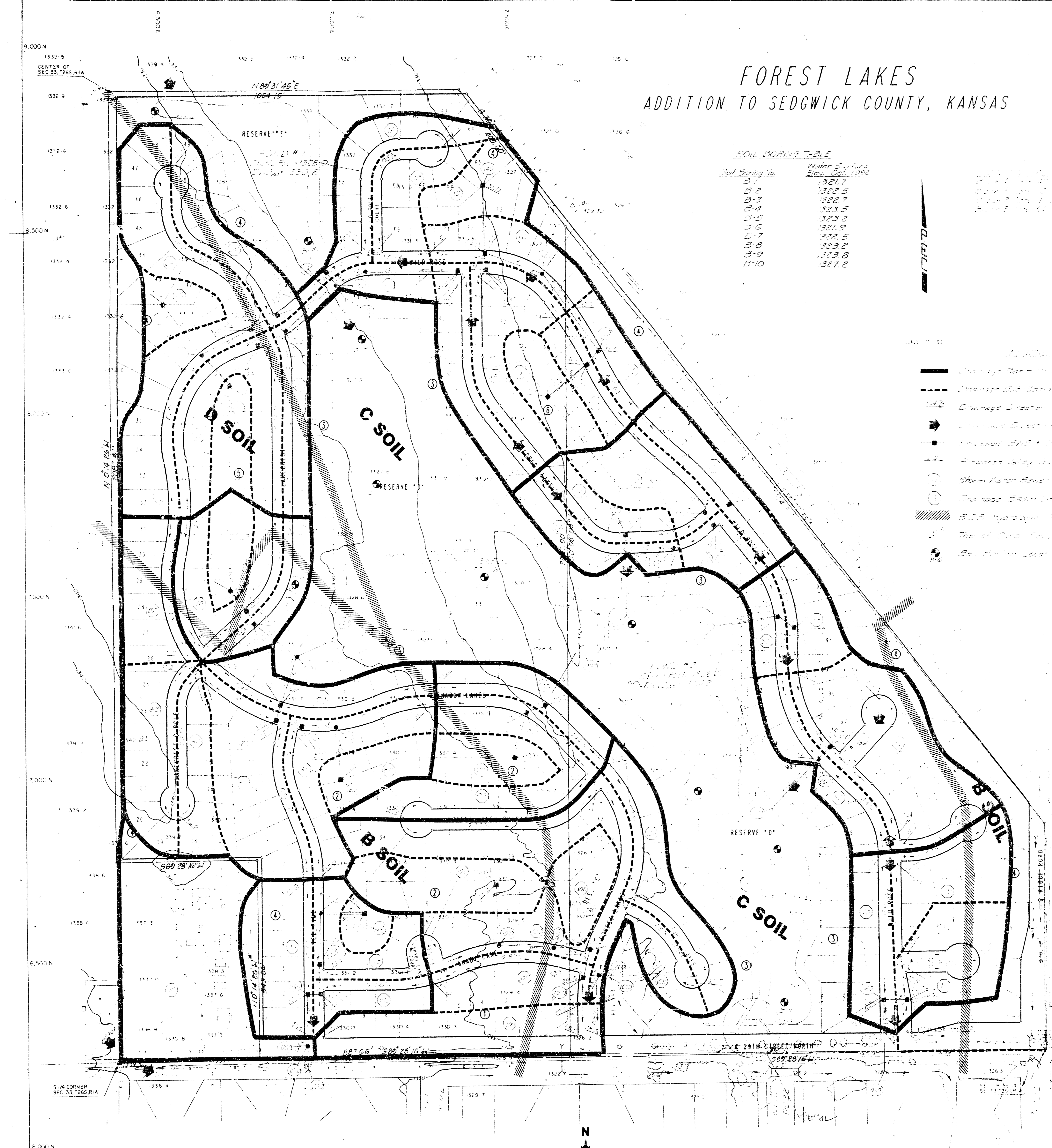
SUPPLEMENTAL DRAINAGE
REPORT
FOREST LAKES/R.R. 6TH, THIRDA

FOREST LAKES ADDITION TO SEDGWICK COUNTY, KANSAS

SOIL BORING TABLE

Soil Boring No.	Water Surface Elev. Oct. 1932
B-1	1321.7
B-2	1322.5
B-3	1322.7
B-4	1323.5
B-5	1323.0
B-6	1321.9
B-7	1322.5
B-8	1323.2
B-9	1323.8
B-10	1327.2

- SCALE 1" = 100'
- Drainage Basin Boundary
 - Division of Drainage Basins
 - Channel Section (Proposed)
 - Direction of Flow
 - Inflow Point
 - Proposed Water Control
 - Storm Water Basin (Proposed)
 - Drainage Basin (Proposed)
 - S.O.S. (Proposed)
 - Top of Drive (Proposed)
 - Soil Boring Location



N
 LEGAL NORTH
 TOPOGRAPHIC MAP OF LAT. LOCATED BY
 36 QUARTER SECTION 33, 34 & 35
 SEDGWICK COUNTY, KANSAS
 SURVEYING & ENGINEERING
 PROFESSIONAL SURVEYING LICENSE NO. 1172
 305 S. TORREY ST., WICHITA, KANSAS
 1" = 200'

Revision	By	Date

DRAINAGE PLAN FOREST LAKES

