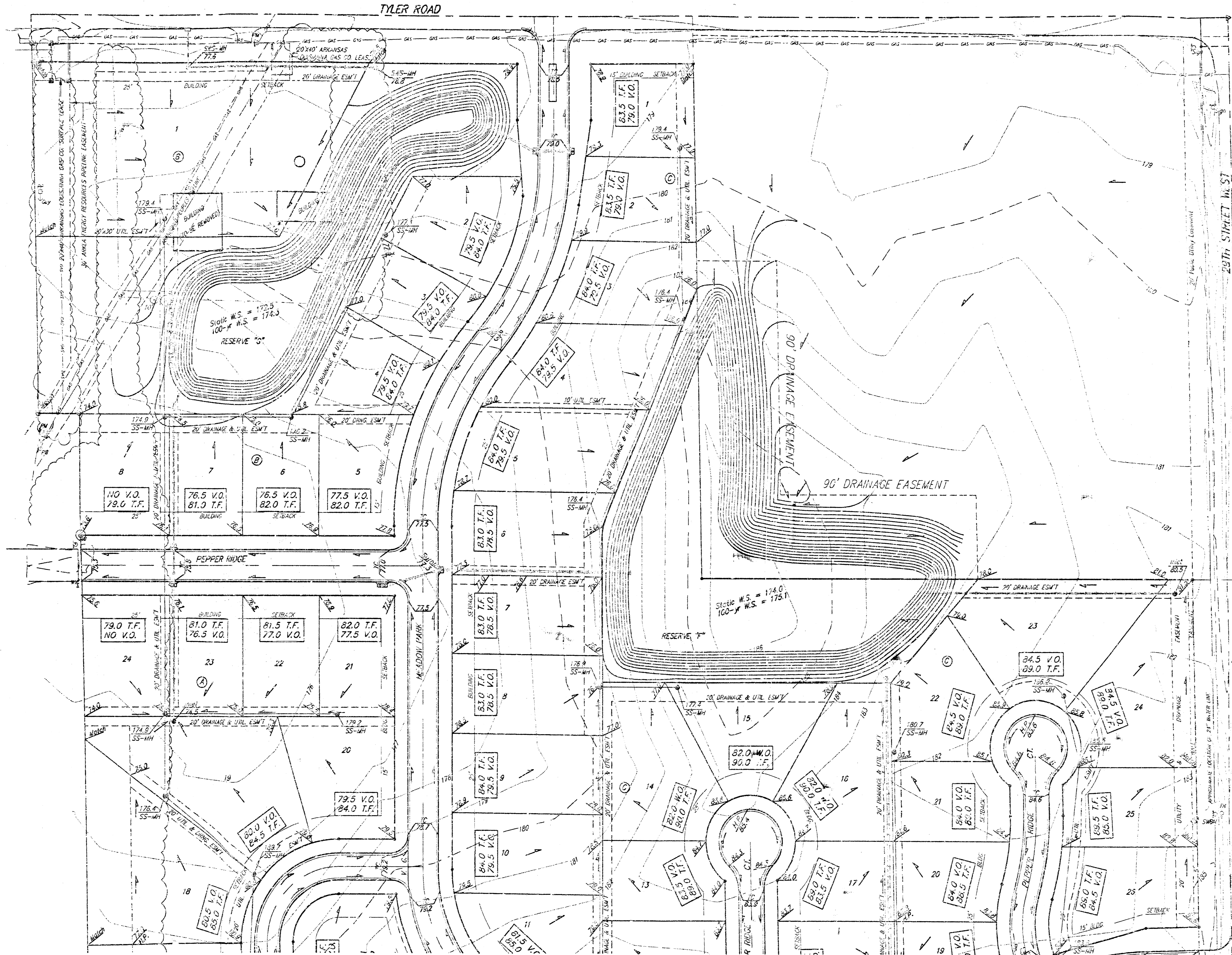
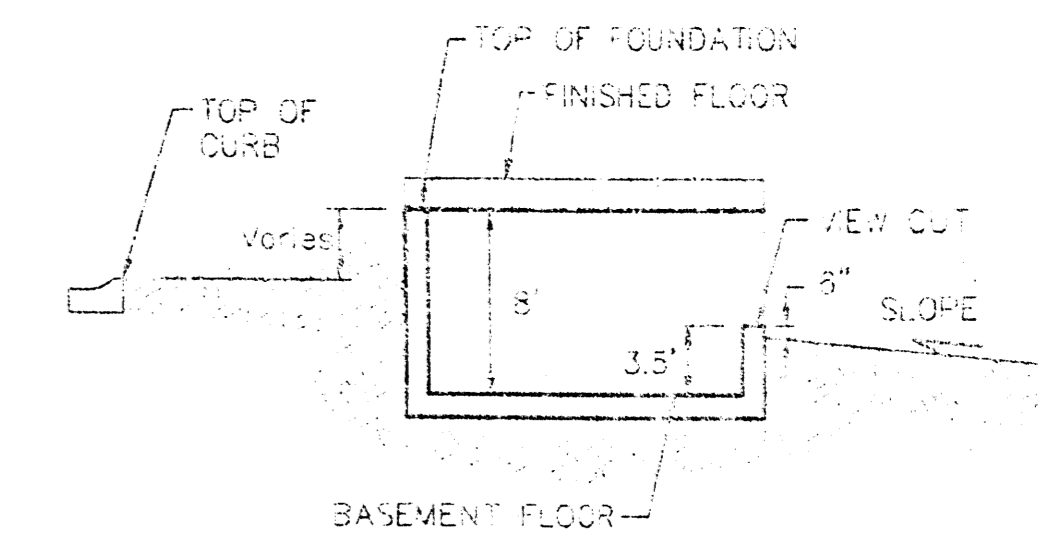


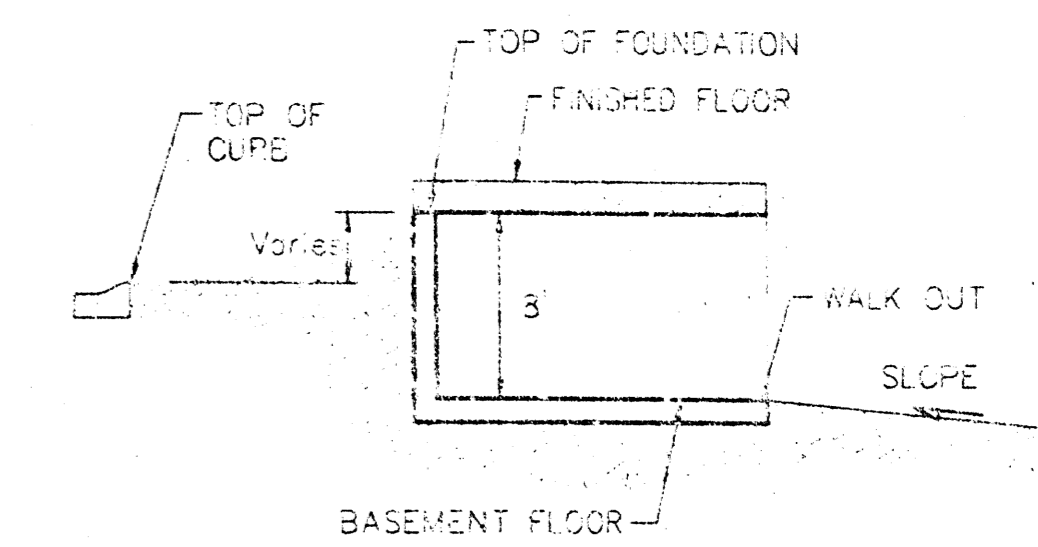
BENCHMARK:
City of Wichita also northwest wingwall
of Tec Time and 29th Street North.
Elev. = 142.20 NGVD



SCALE: 1" = 60'
• = IRON



TYPICAL VIEW OUT
NO SCALE



TYPICAL WALK OUT
NO SCALE

NOTES:

All drainage easements, rights-of-way, or reserves shall remain as established grades or as modified with the approval of the City Engineer or the City of Wichita, Kansas. No obstructions which impede the flow of this drainage system shall be allowed.

Proposed top of foundation elevations are shown on plans - contractor to set finished floor elevations.

All street elevations shown on plans are for top of curb (full-height). Typically roll-type curbs are constructed. Deeduct 0.25' from top of curb (full-height).

This Grading Plan is designed with view-cut and walk-out basements. Elevations shown at rear of house (XXX V.O. and XXX T.F.) are for minimum opening.

All elevations shown on plans are City of Wichita Datum.

This grading plan has been submitted prior to the plat being recorded by Sedgwick County, Cell Daughman Company for the most current grading plan prior to construction.

**APPROVED
DRAINAGE PLAN**

MINIMUM BUILDING PAD ELEVATIONS FOR LOWEST OPENING TO THE STRUCTURES		
LOT	BLOCK	ELEVATION MSL
1-5	A	157.0
1-8	B	175.5
1-2, 4-16, 22, 23	C	172.0
1-11	D	166.0

SPRINGS HEADED LOTS 8 & 7, BLOCK C BY J&S

FORBIL FIRM ESTATES
LOT GRADING PLAN
CITY OF WICHITA, KANSAS

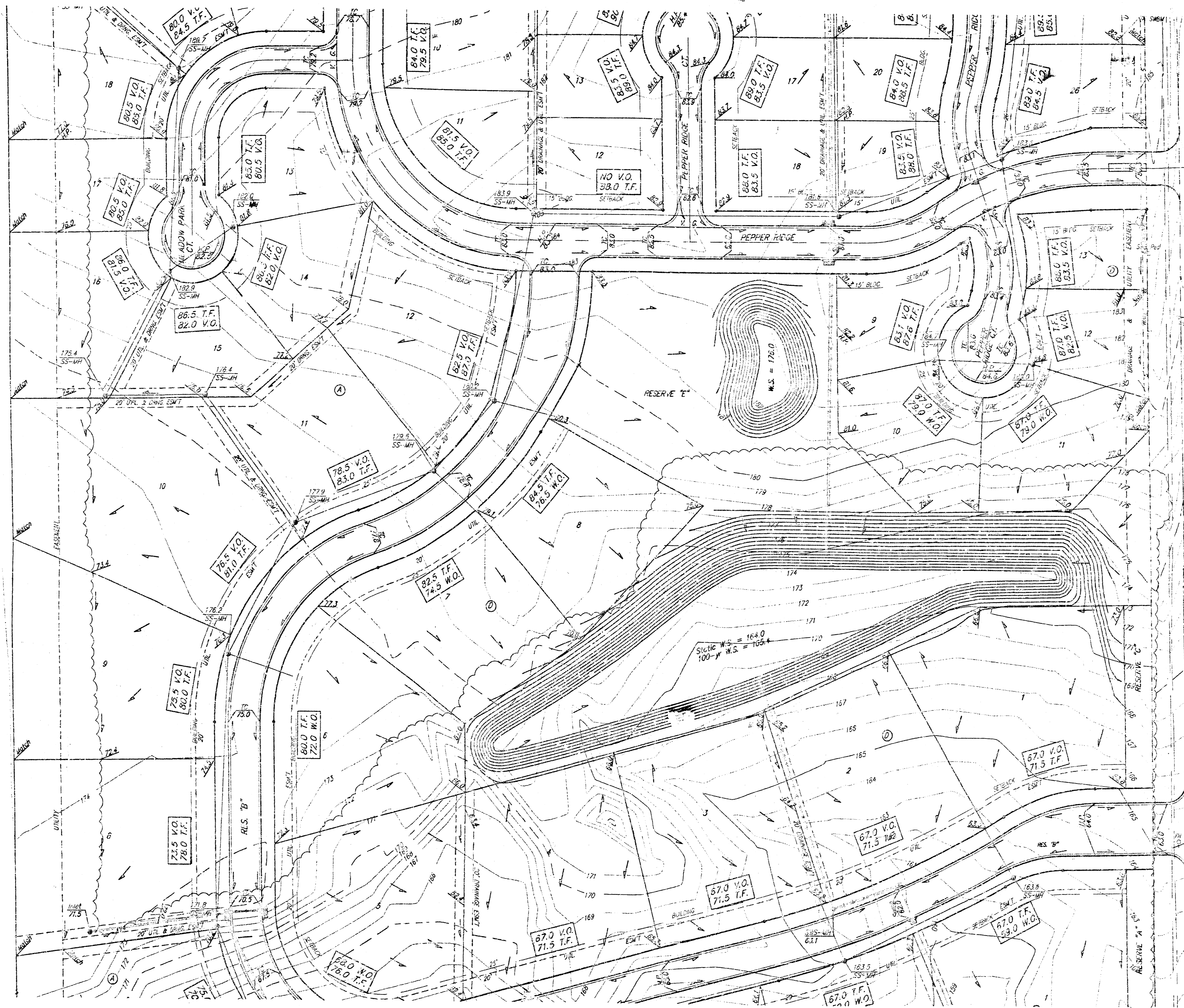
BAUGHMAN COMPANY P.A.
ENGINEERING, SURVEYING, & PLANNING
116-232-7221 • 1155 BLUE • WICHITA, KANSAS 67201

PROJECT NUMBER: _____ SHEET: **1** OF **3**

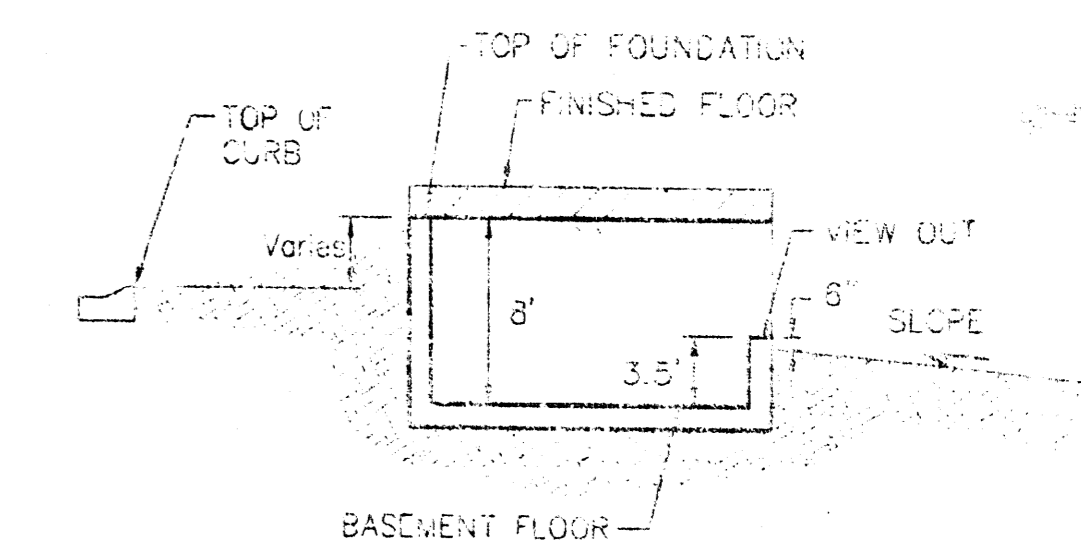
DESIGN: SCL	DRAWN: SCL	APPROVED: NEW	DATE: 02/11/02	SCALE: 1"=60'
-------------	------------	---------------	----------------	---------------

AT WICHITA, KANSAS

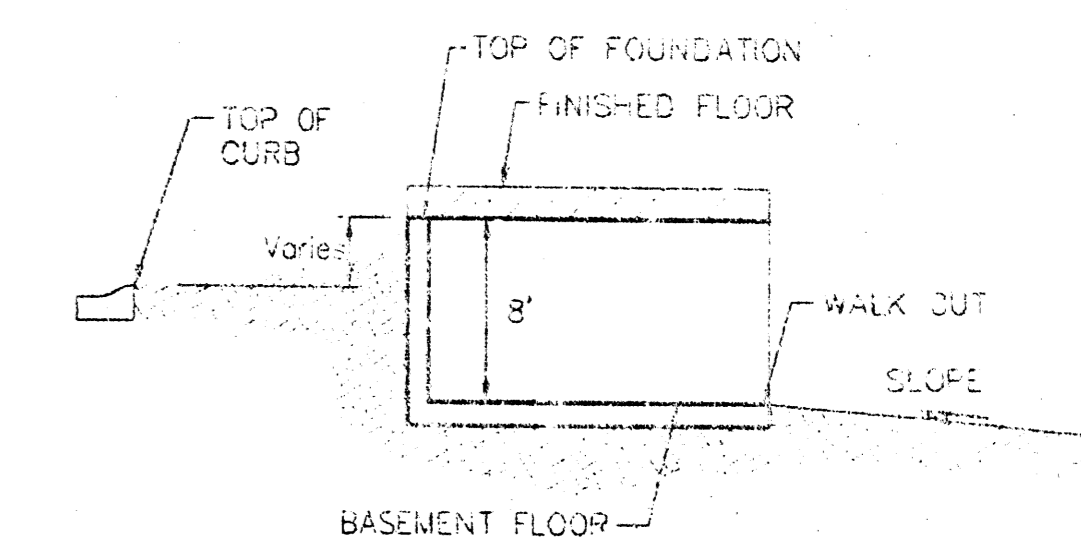
BENCHMARK:
 City of Wichita dsc northwest wing
 at Tee Time and 29th Street North.
 Elev. = 142.20 NGVD



SCALE: 1" = 60'
 • = IRON



TYPICAL VIEW OUT
 NO SCALE



TYPICAL WALK OUT
 NO SCALE

NOTES:

All drainage easements, rights-of-way, or reserves shall remain at established grades or as modified under the approval of the City Engineer of the City of Wichita, Kansas. No obstructions which impede the flow of this drainage system shall be allowed.

Proposed top of foundation elevations are shown on plans. Contractor to set finished floor elevations.

All street elevations shown on plans are for top of curb (full-height). Typically red-type curbs are constructed. Offset 0.25' from top of curb (full-height).

This Grading Plan is designed with View-Out and Walk-Out Basements. Elevations shown at feet of House (XX V.O. and XX W.O.) are for minimum opening.

All elevations shown on plans are City of Wichita Datum.

This grading plan has been submitted prior to the plat being recorded by Sedgewick County. Call Baughman Company for the most current grading plan prior to construction.

MINIMUM BUILDING PAD ELEVATIONS FOR LOWEST OPENING TO THE STRUCTURES

LOT	BLOCK	ELEVATION
1-6	A	157.0
1-6	B	176.5
3-8, 14-16, 21, 23	C	178.0
1-11	D	156.0

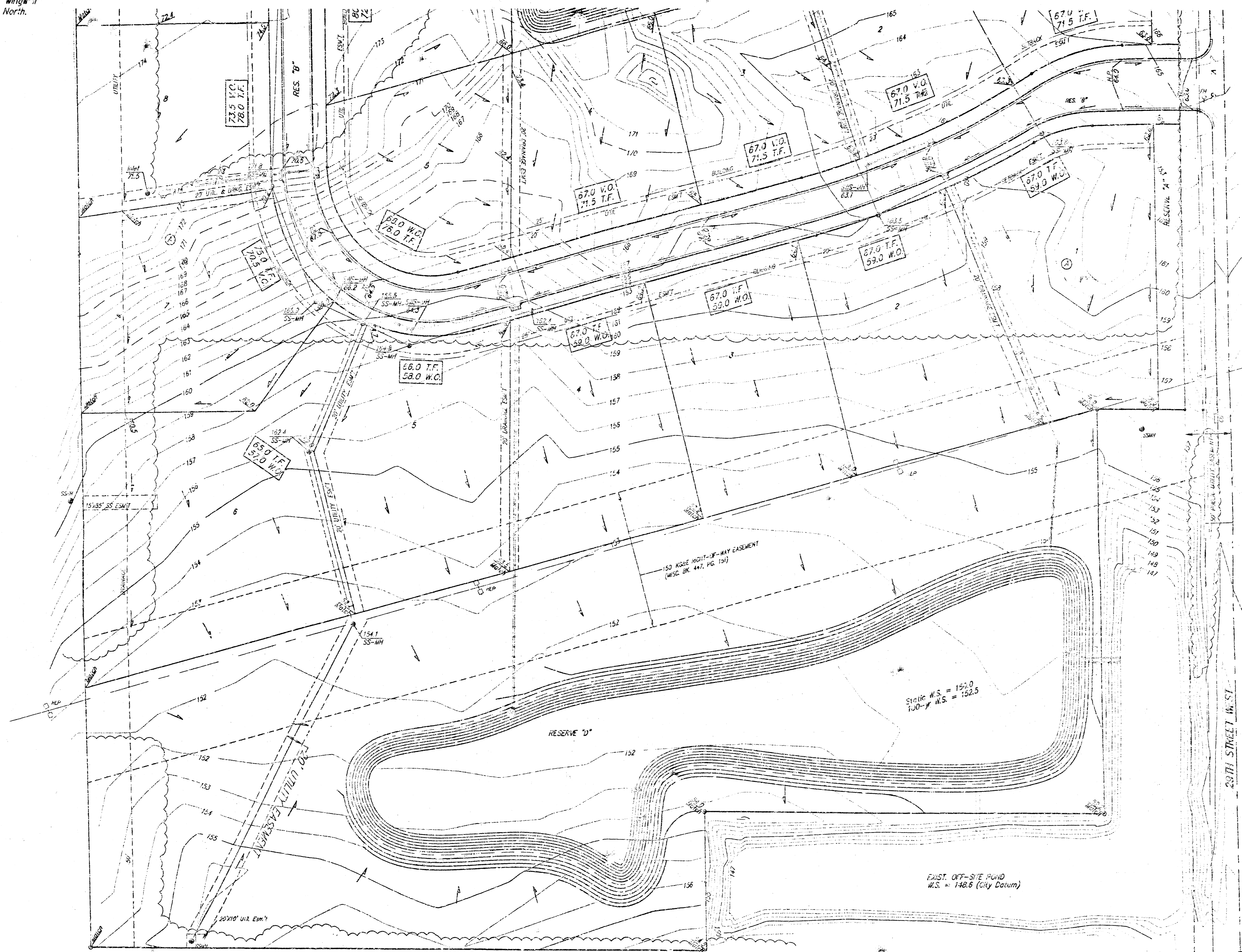
FORBUSH ESTATES
LOT GRADING PLAN
 CITY OF WICHITA, KANSAS

BAUGHMAN COMPANY P.A.
 ENGINEERING, SURVEYING, & PLANNING
 311-222-7271 • 315 ELLIS • WICHITA, KANSAS 67211

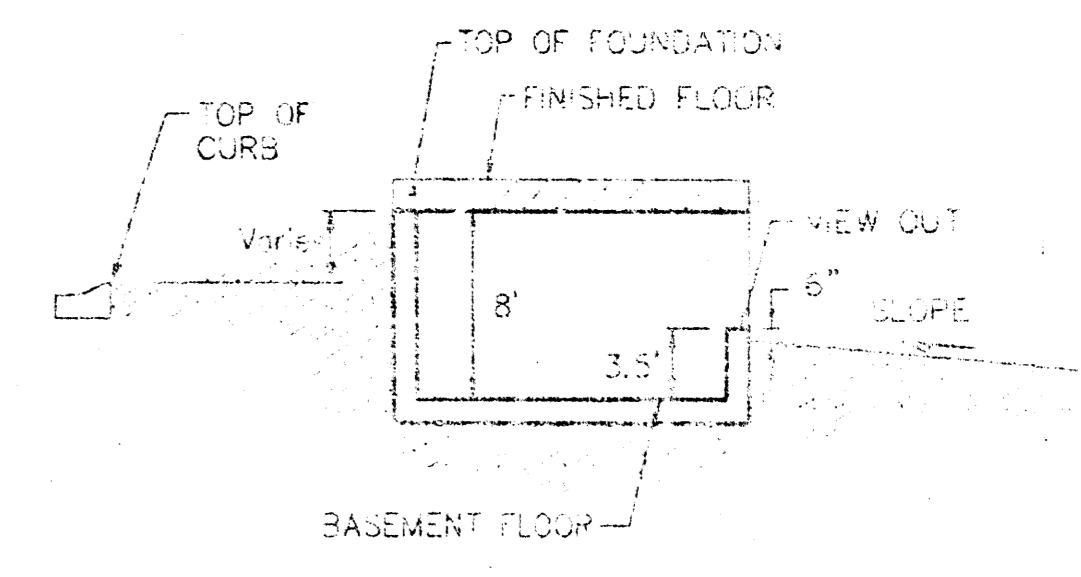
PROJECT NUMBER: _____

DESIGN: SCL DRAWN: SCL APPROVED: NGW DATE: 02/11/02 SCALE: 1"=60' SHEET: 3 OF 3

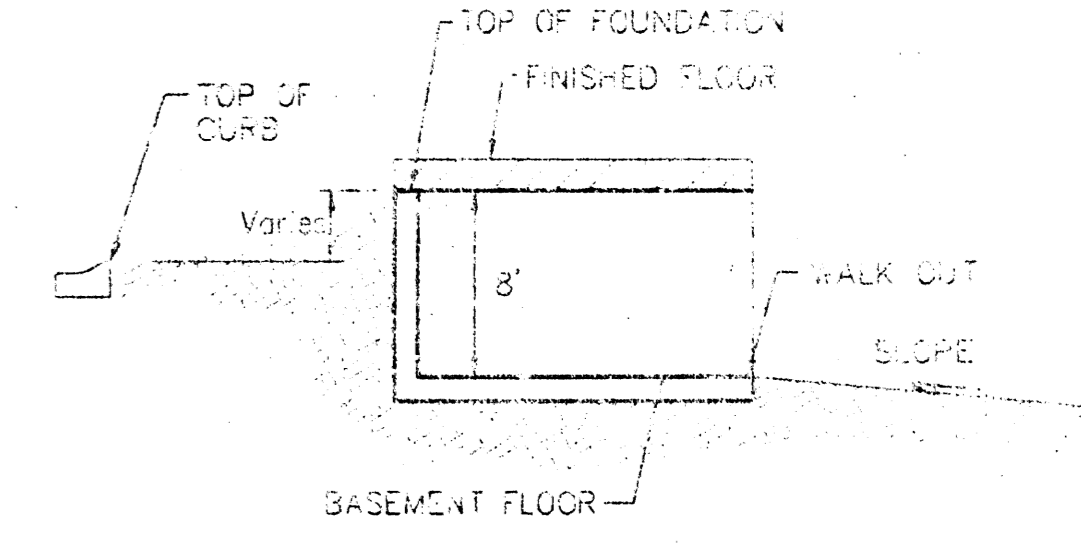
BENCHMARK:
 City of Wichita disc northwest wing #11
 at Tee Time and 29th Street North.
 Elev. = 142.20 NGVD



SCALE 1" = 60'
 • = IRON



TYPICAL VIEW CUT
 NO SCALE



TYPICAL WALK CUT
 NO SCALE

NOTES:

All drainage easements, rights-of-way, or easements shall remain at established grades or as modified with the approval of the City Engineer of the City of Wichita, Kansas. No obstructions which impede the flow of this drainage system shall be allowed.

Proposed top of foundation elevations are shown on plans. Contractor to set finished floor elevations.

All street elevations shown on plans are for top of curb (full-height). Typically roll-type curbs are constructed. Deduct 0.25' from top of curb (full-height).

This Grading Plan is designed with view-Out and Walk-Out easements. Elevations shown at Rear of House (XXX V.O. and XXX W.O.) are for minimum opening.

All elevations shown on plans are City of Wichita Datum.

This grading plan has been submitted prior to the plot being recorded by Sedgewick County. Call Baughman Company for the most current grading plan prior to construction.

MINIMUM BUILDING PAD ELEVATIONS FOR LOWEST OPENING TO THE STRUCTURES		
LOT	BLOCK	ELEVATION
1-8	A	157.0
1-8	B	176.5
3-814-15,22,23	C	178.0
1-11	D	166.0

PROPOSED PLANNING ELEVATIONS

LOT GRADING PLAN

CITY OF WICHITA, KANSAS

BAUGHMAN COMPANY P.A.
 ENGINEERING, SURVEYING, & PLANNING

318-252-7071 • 318-252-7072 • 318-252-7073

PROJECT NUMBER: _____

DESIGN: [] DRAWN: [] APPROVED: [] DATE: 9/11/02 SCALE: 1"=60'

SHEET 3 OF 3