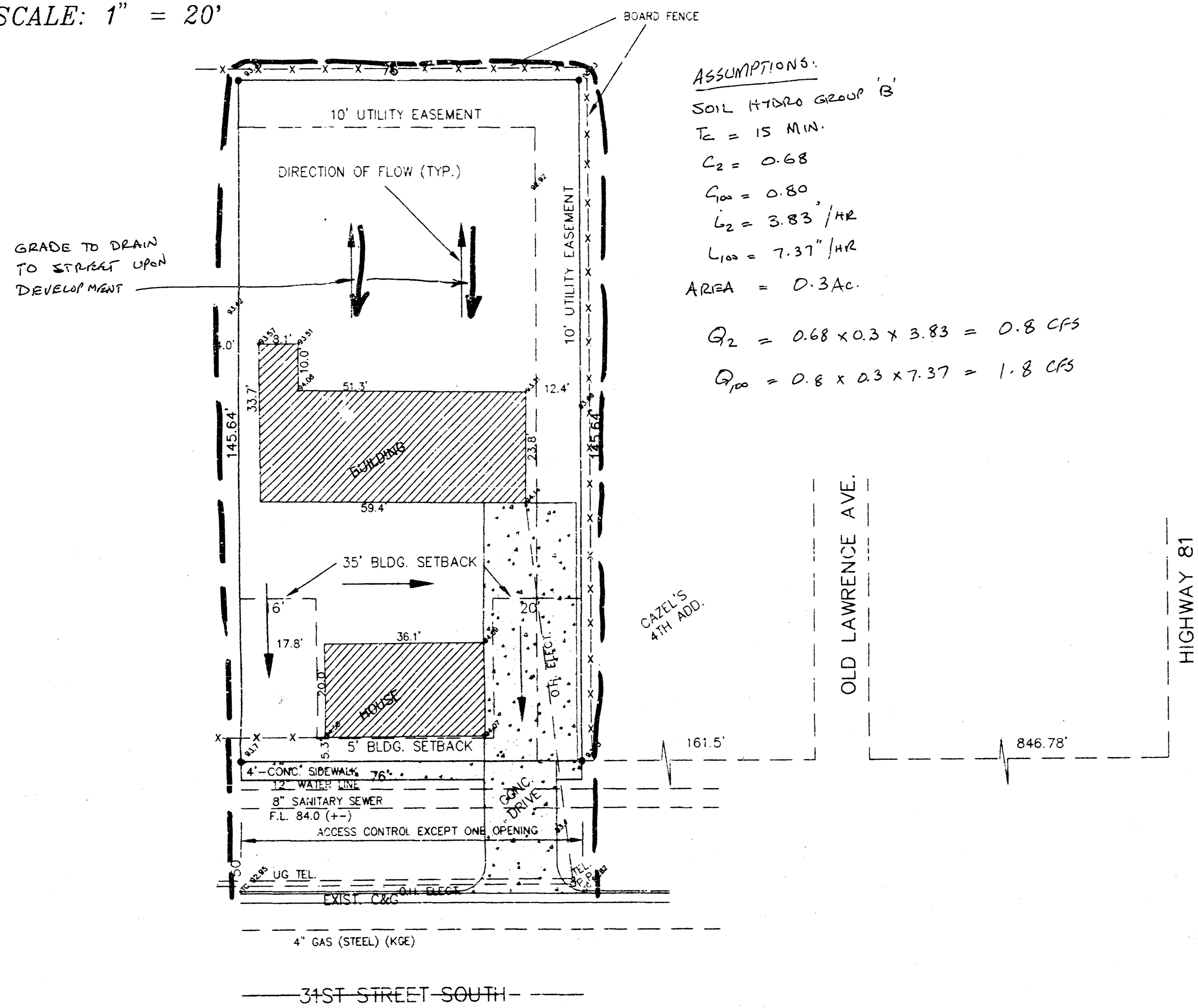




SCALE: 1" = 20'



ASSUMPTIONS:

SOIL HYDRO GROUP B
 $T_e = 15 \text{ MIN.}$
 $C_2 = 0.68$
 $G_m = 0.80$
 $L_2 = 3.83' / \text{HR}$
 $L_{100} = 7.37' / \text{HR}$
 $\text{AREA} = 0.3 \text{ AC.}$

$G_2 = 0.68 \times 0.3 \times 3.83 = 0.8 \text{ CFS}$
 $G_{100} = 0.8 \times 0.3 \times 7.37 = 1.8 \text{ CFS}$

GENERAL:

ZONING LIGHT COMMERCIAL
 NO. OF LOTS 1
 MINIMUM LOT SIZE 10,000 S.F.

NOTE: UTILITY INFORMATION TAKEN FROM UTILITY COMPANY RECORDS.
 BENCH MARK: CITY OF WICHITA DISK, 37' N. & 40' W. OF 31ST & BROADWAY. ELEV. = 93.30

PROPERTY OWNER:

GAYFORD LYNN GANN
 130 1/2 WEST 31ST STREET SOUTH
 WICHITA, KANSAS 67217

SUBDIVIDER:

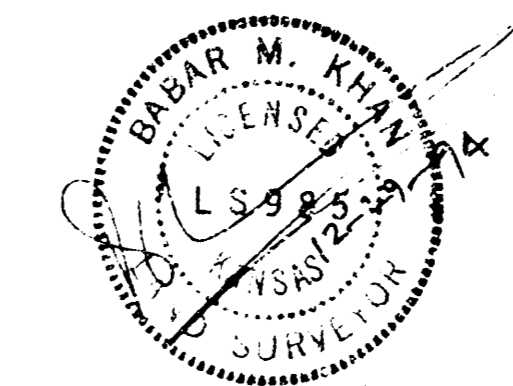
WILMA L. GREENWOOD
 3154 CHASE STREET
 WICHITA, KANSAS 67217

SURVEYOR:

BABAR M. KHAN
 MUNICIPAL ENGINEERS, P.A.
 254-LAURA, SUITE 201
 WICHITA, KANSAS 67211
 TEL.: 316-262-3842

**DRAINAGE PLAN
 VICINITY MAP
 GANN FIRST ADDITION TO
 WICHITA, KANSAS**

*B.K.
 1-16-94*



SCALE	APPROVED:	DRAWN BY:
DATE:	CHECKED:	SHEET NO.:
PROJECT NO:	34-01 (MUNICIPAL)	
MUNICIPAL ENGINEERS		
254-LAURA, SUITE 201 WICHITA, KANSAS 67211 316-262-3842		