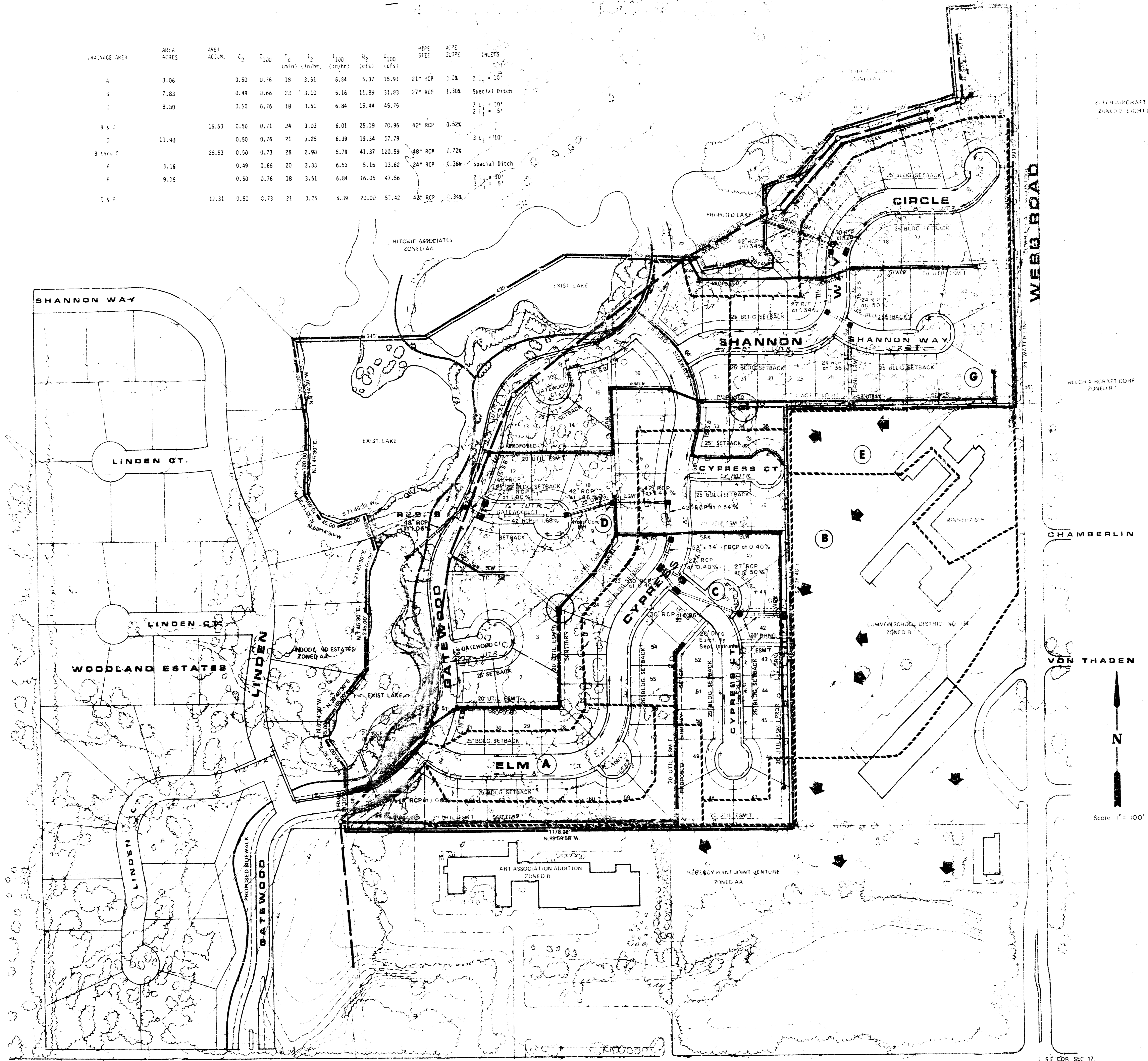


RAINAGE AREA	AREA ACRES	AREA ACUM.	C ₁	C ₂	T ₁ (min)	T ₂ (hr)	Q ₁ (cfs)	Q ₂ (cfs)	Q ₁₀₀ (cfs)	PIPE SIZE	PIPE SLOPE	INLETS
A	3.06		0.50	0.76	18	3.51	6.84	5.37	15.91	21" RCP	0.3%	3 1/2" x 10'
B	7.83		0.49	0.66	23	3.10	6.16	11.89	31.83	27" RCP	1.30%	Special Ditch
C	8.50		0.50	0.76	18	3.51	6.84	15.34	45.75			2 1/2" x 10' 2 1/2" x 5'
B & C	16.63		0.50	0.71	24	3.03	6.01	25.19	70.36	42" RCP	0.52%	
D	11.90		0.50	0.76	21	3.25	6.39	19.34	57.79			3 1/2" x 10'
B & D	28.53		0.50	0.73	26	2.90	5.79	41.37	120.59	48" RCP	0.72%	
E	3.16		0.49	0.66	20	3.33	6.53	5.16	13.62	24" RCP	0.36%	Special Ditch
F	9.15		0.50	0.76	18	3.51	6.84	16.05	47.56			2 1/2" x 10' 2 1/2" x 5'
E & F	12.31		0.50	0.73	21	3.25	6.39	20.00	57.42	48" RCP	0.35%	



SEC. 17, T25S, R2E

SEC. 17, T25S, R2E

NOTES:
 TOPOGRAPHY IS FROM AERIAL PHOTOGRAPHY TAKEN JUNE 1985
 A DRAINAGE CONCEPT PLAN IS TO BE SUBMITTED TO CITY ENGINEER BY M.K.E.C.
 RESERVE "A" IS FOR DRAINAGE UTILITIES, LANDSCAPING, ENTRY MONUMENTS AND WALKS
 RESERVE "B" IS FOR DRAINAGE UTILITIES, LANDSCAPING, ENTRY MONUMENTS, WALKS, GAZEBOS AND EXERCISE PATHS

