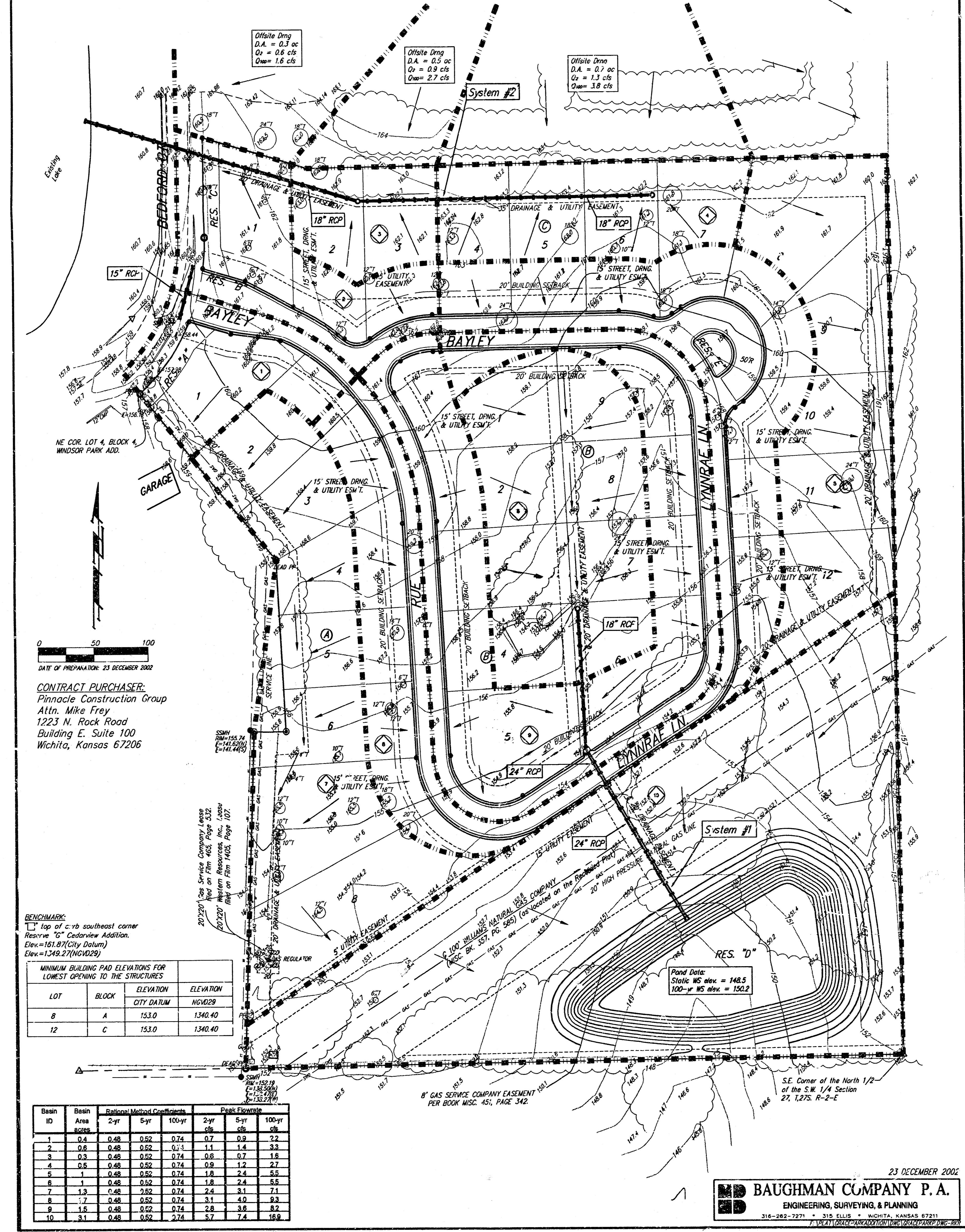


# DRAINAGE PLAN GRACE PARK

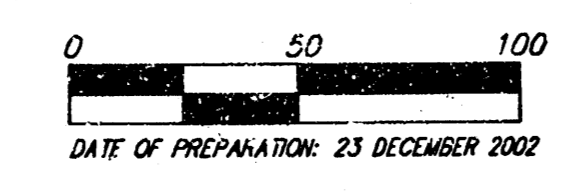
## AN ADDITION WICHITA, SEDGWICK COUNTY, KANSAS



Offsite Dmg  
D.A. = 0.3 ac  
Q<sub>2</sub> = 0.6 cfs  
Q<sub>100</sub> = 1.6 cfs

Offsite Dmg  
D.A. = 0.5 ac  
Q<sub>2</sub> = 0.9 cfs  
Q<sub>100</sub> = 2.7 cfs

Offsite Dmg  
D.A. = 0.7 ac  
Q<sub>2</sub> = 1.3 cfs  
Q<sub>100</sub> = 3.6 cfs



DATE OF PREPARATION: 23 DECEMBER 2002  
**CONTRACT PURCHASER:**  
Pinnacle Construction Group  
Attn: Mike Frey  
1223 N. Rock Road  
Building E, Suite 100  
Wichita, Kansas 67206

**BENCHMARK:**  
□ top of curb southeast corner  
Reserve "D" Cedarview Addition.  
Elev. = 161.97 (City Datum)  
Elev. = 1349.27 (NGVD29)

MINIMUM BUILDING PAD ELEVATIONS FOR LOWEST OPENING TO THE STRUCTURES			
LOT	BLOCK	ELEVATION	
		CITY DATUM	NGVD29
8	A	153.0	1340.40
12	C	153.0	1340.40

Basin ID	Basin Area (SQ FT)	Rational Method Coefficients			Peak Flowrate		
		2-yr	5-yr	100-yr	2-yr	5-yr	100-yr
1	0.4	0.48	0.52	0.74	0.7	0.8	0.8
2	0.8	0.48	0.52	0.74	1.1	1.4	3.3
3	0.3	0.48	0.52	0.74	0.6	0.7	1.8
4	0.5	0.48	0.52	0.74	0.9	1.2	2.7
5	1	0.48	0.52	0.74	1.8	2.4	5.5
6	1	0.48	0.52	0.74	1.8	2.4	5.5
7	1.3	0.48	0.52	0.74	2.4	3.1	7.1
8	1.7	0.48	0.52	0.74	3.1	4.0	9.2
9	1.5	0.48	0.52	0.74	2.8	3.6	8.2
10	3.1	0.48	0.52	0.74	5.7	7.4	18.8

23 DECEMBER 2002  
**BAUGHMAN COMPANY P. A.**  
ENGINEERING, SURVEYING, & PLANNING  
316-282-7271 • 315 ELLIS • WICHITA, KANSAS 67211