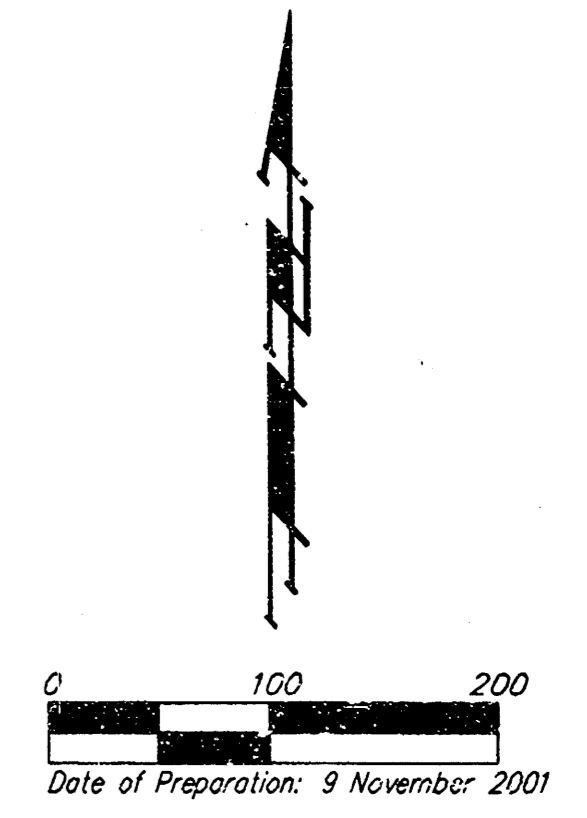


DRAINAGE PLAN GRAY'S 5TH ADDITION WICHITA, SEDGWICK COUNTY, KANSAS



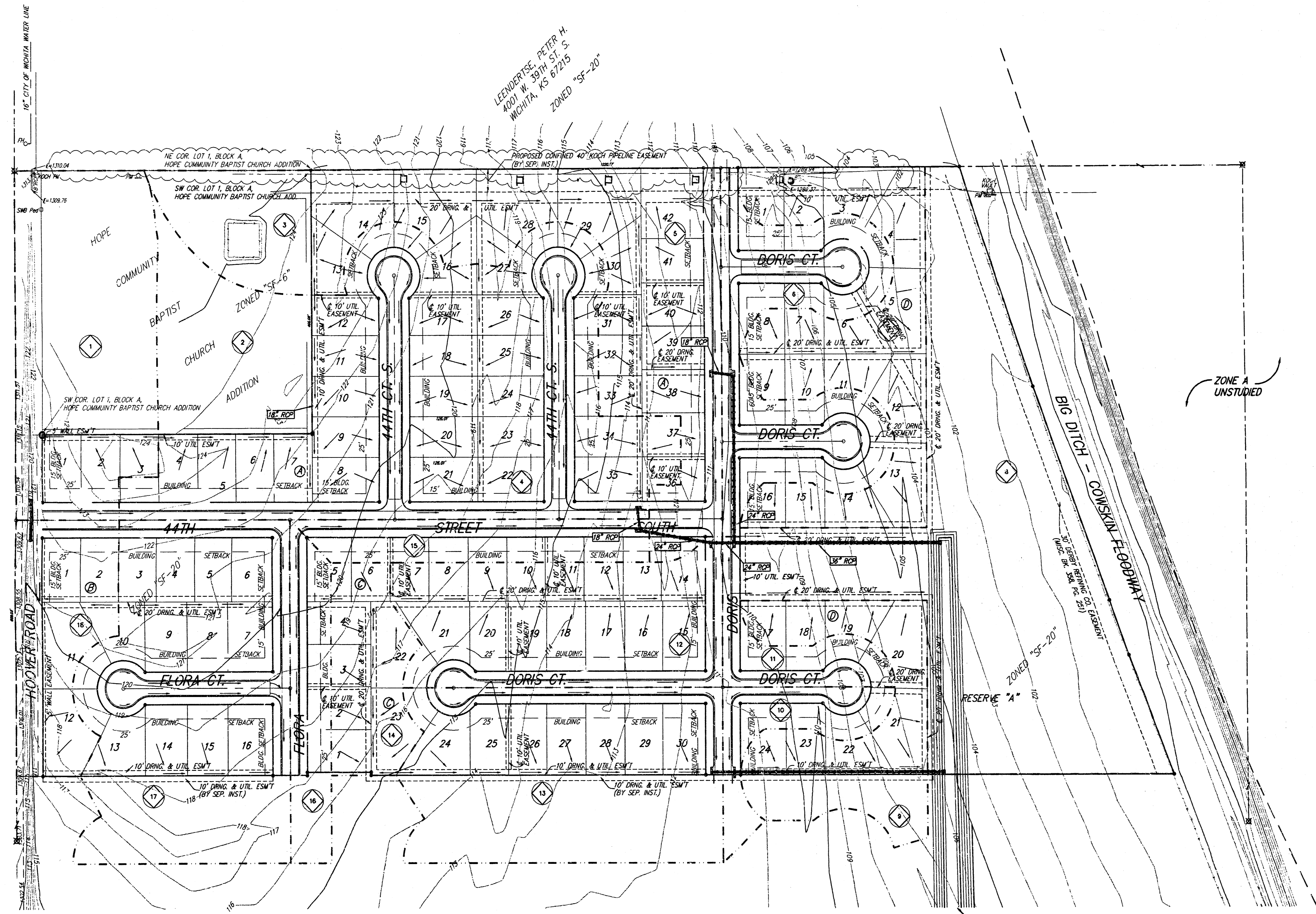
- = #4 Rebar w/ "Baughman" cap (Set)
- ⊗ = Section cor. (Found)
- = 1/2" Iron (Found)
- ⊙ = #5 Rebar (Found)
- (M) = Measured
- (D) = Described
- (P) = Plotted
- (C) = Calculated

BENCHMARK:
City elev 41.80' north and 69.00' east of centerline of Hoover and Wackerlin.
Elev = 1308.62 NGVD29 (121.22 City Datum)

NOTE:
A master grading plan for drainage has been developed for this subdivision and is on file with the City of Wichita, Kansas. All drainage easements, rights-of-way, or reserves shall remain at established grades or as modified with the approval of the City Engineer of the City of Wichita, Kansas. No obstructions which impede the flow of this drainage system be allowed.

Lot	Block	Elevation	
		City Datum	NGVD29
4,5	D	105.6	1293.0
12-21	D	105.6	1293.0

Basin ID	Area acres	Runoff Coefficient			Peak Flowrate		
		2-yr	5-yr	100-yr	2-yr	5-yr	100-yr
1	3.7	0.42	0.44	0.59	6.0	7.4	16
2	1.9	0.42	0.44	0.59	3.1	3.8	8.3
3	1.2	0.42	0.44	0.59	1.9	1.4	5.2
4	7.6	0.42	0.44	0.59	13	16	34
5	4.6	0.42	0.44	0.59	2.4	9.2	20
6	2.7	0.42	0.44	0.59	4.3	5.4	12
7	3.0	0.42	0.44	0.59	4.5	6.0	13
8	7.5	0.42	0.44	0.59	12	15	33
9	2.1	0.42	0.44	0.59	3.4	4.2	9.1
10	0.8	0.42	0.44	0.59	1.3	1.6	3.5
11	0.7	0.42	0.44	0.59	1.1	1.4	3.0
12	3.2	0.42	0.44	0.59	3.1	6.4	14
13	4.2	0.42	0.44	0.59	6.5	8.4	18
14	1.2	0.42	0.44	0.59	1.9	2.4	5.2
15	1.1	0.42	0.44	0.59	1.8	2.2	4.8
16	1.0	0.42	0.44	0.59	1.6	2.0	4.3
17	5.1	0.42	0.44	0.59	8.2	10	22
18	1.7	0.42	0.44	0.59	2.7	3.4	7.4



WALL, ALICE W. REVOCABLE TRUST
% PERCHIVAL J. KIRK, TRUSTEE
1531 N. RIDGEWOOD DR.
WICHITA, KS 67208
ZONED "SF-20"

LEENWERTSE, PETER H.
400 W. 39TH ST. S.
WICHITA, KS 67215
ZONED "SF-20"

Channel Section
to be constructed to
proposed crossing
at 47th St. South

Revised 30 April 2002
9 NOVEMBER 2001