

GENERAL NOTES

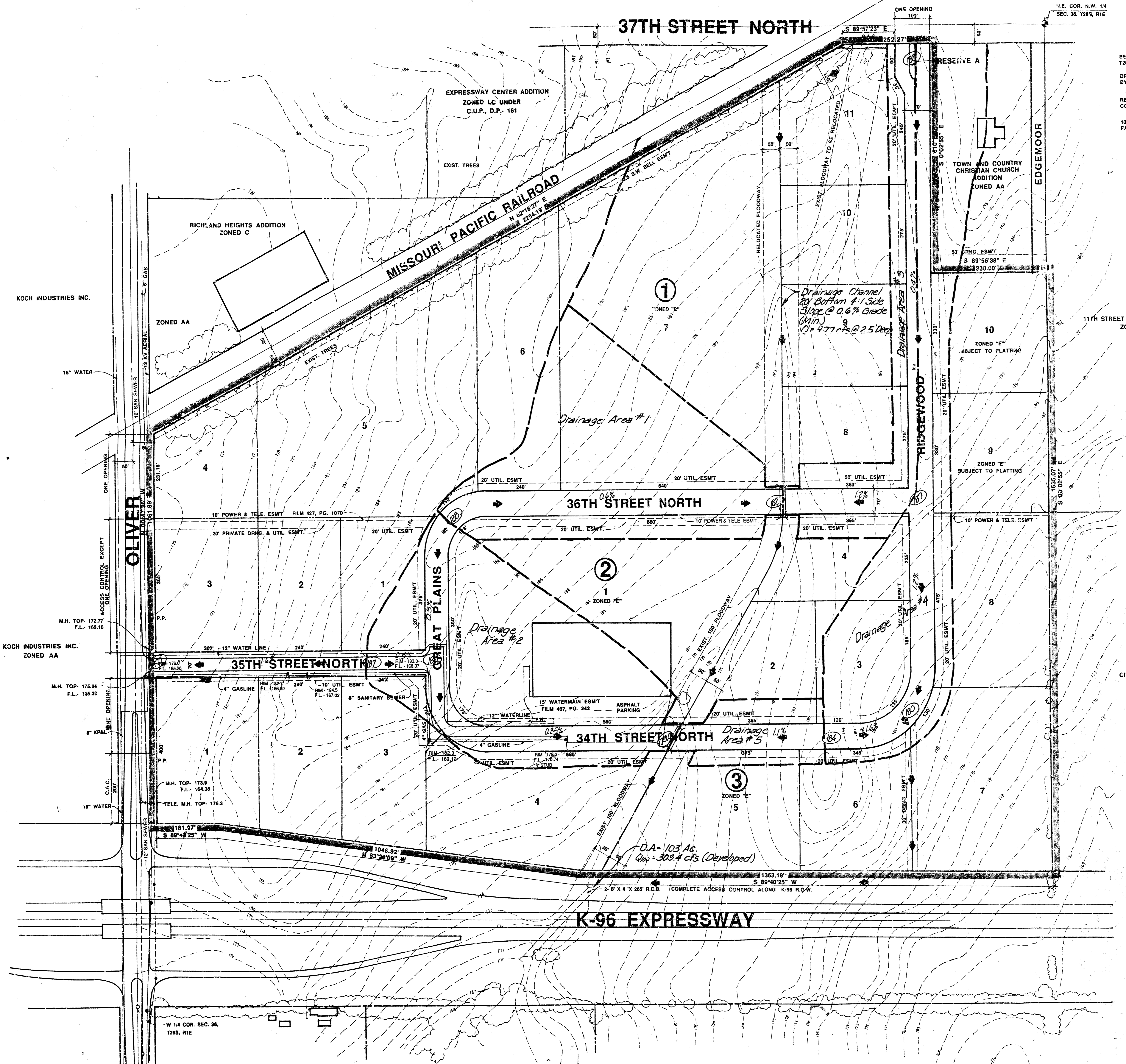
1. THE PLAT IS SUBJECT TO THE CITY OF WICHITA, KANSAS, ZONING ORDINANCES AND ANY AMENDMENTS THEREOF.
 2. THE PLAT IS SUBJECT TO THE CITY OF WICHITA, KANSAS, SUBDIVISION ACT AND ANY AMENDMENTS THEREOF.
 3. THE PLAT IS SUBJECT TO THE CITY OF WICHITA, KANSAS, UTILITY ORDINANCES AND ANY AMENDMENTS THEREOF.
 4. THE PLAT IS SUBJECT TO THE CITY OF WICHITA, KANSAS, PLANNING AND ZONING COMMISSION'S DECISIONS AND ANY AMENDMENTS THEREOF.
 5. THE PLAT IS SUBJECT TO THE CITY OF WICHITA, KANSAS, PLANNING AND ZONING COMMISSION'S DECISIONS AND ANY AMENDMENTS THEREOF.

LOT GRADING AND DRAINAGE PLAN
 PRELIMINARY PLAT (REPLAT OF GREAT PLAINS BUSINESS PARK & NORTH OLIVER IND. PARK ADDITION)
GREAT PLAINS BUSINESS PARK 2ND ADDITION

DRAWN BY: GREAT PLAINS VENTURES, INC., 1400 N. OLIVER, WICHITA, KANSAS 67220, PH. (316) 844-1404

POE & ASSOCIATES OF KANSAS CONSULTING ENGINEERS

FILMED FROM THE BEST AVAILABLE COPY....



GENERAL NOTES:

BENCHMARK: CITY OF WICHITA DISC. 29' S. AND 39' E. OF W. 1/4 COR., SEC. 36, T26S, R1E. ELEV. - 172.81 CITY DATUM.

DRAINAGE CONCEPT PLAN TO BE PREPARED AND SUBMITTED TO CITY ENGINEER BY POE AND ASSOCIATES.

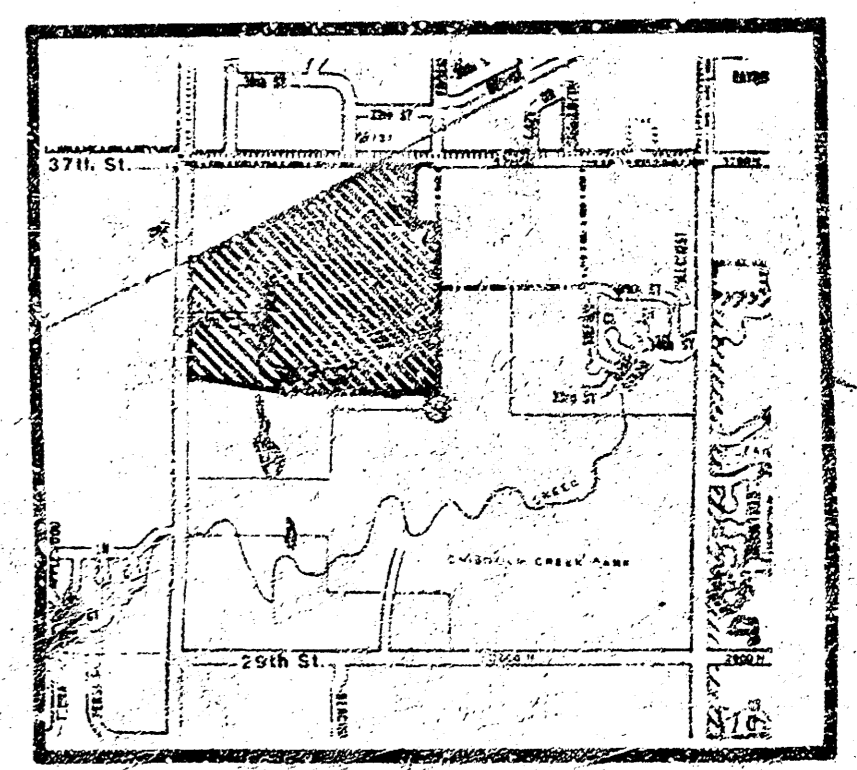
RESERVE "A" IS FOR LANDSCAPING, ENTRY MONUMENTS AND UTILITIES CONFINED TO EASEMENTS.

100' FLOODWAY IS THE SAME AS THAT PLATTED ON GREAT PLAINS BUSINESS PARK ADDITION, EXCEPT FOR THE REALIGNMENT NEAR 37TH STREET NORTH.

DRAINAGE ACRES

| | |
|---------|---------|
| D.A. #1 | 8.0 Ac. |
| D.A. #2 | 8.7 Ac. |
| D.A. #3 | 3.7 Ac. |
| D.A. #4 | 8.7 Ac. |
| D.A. #5 | 1.6 Ac. |

Total D.A. = 103 Acres



LOCATION MAP



DRAINAGE CONCEPT

PRELIMINARY PLAT (REPLAT OF GREAT PLAINS BUSINESS PARK & NORTH OLIVER IND. PARK ADDITION)

GREAT PLAINS BUSINESS PARK 2ND ADDITION

37TH STREET NORTH

GENERAL NOTES:

BENCHMARK: CITY OF WICHITA DISC. 29' S. AND 30' E. OF W. 1/4 COR. SEC. 16, T.26S, R.1E. ELEV. 1721.1 CITY DATUM.
DRAINAGE CONCEPT PLAN TO BE PREPARED AND SUBMITTED TO CITY ENGINEER BY POE AND ASSOCIATES.
RESERVE "A" IS FOR LANDSCAPING, ENTRY MONUMENTS, AND UTILITIES CONFINED TO EASEMENTS.
100' FLOODWAY IS THE SAME AS THAT PLATTED ON GREAT PLAINS BUSINESS PARK ADDITION, EXCEPT FOR THE REALIGNMENT NEAR 37TH STREET NORTH.

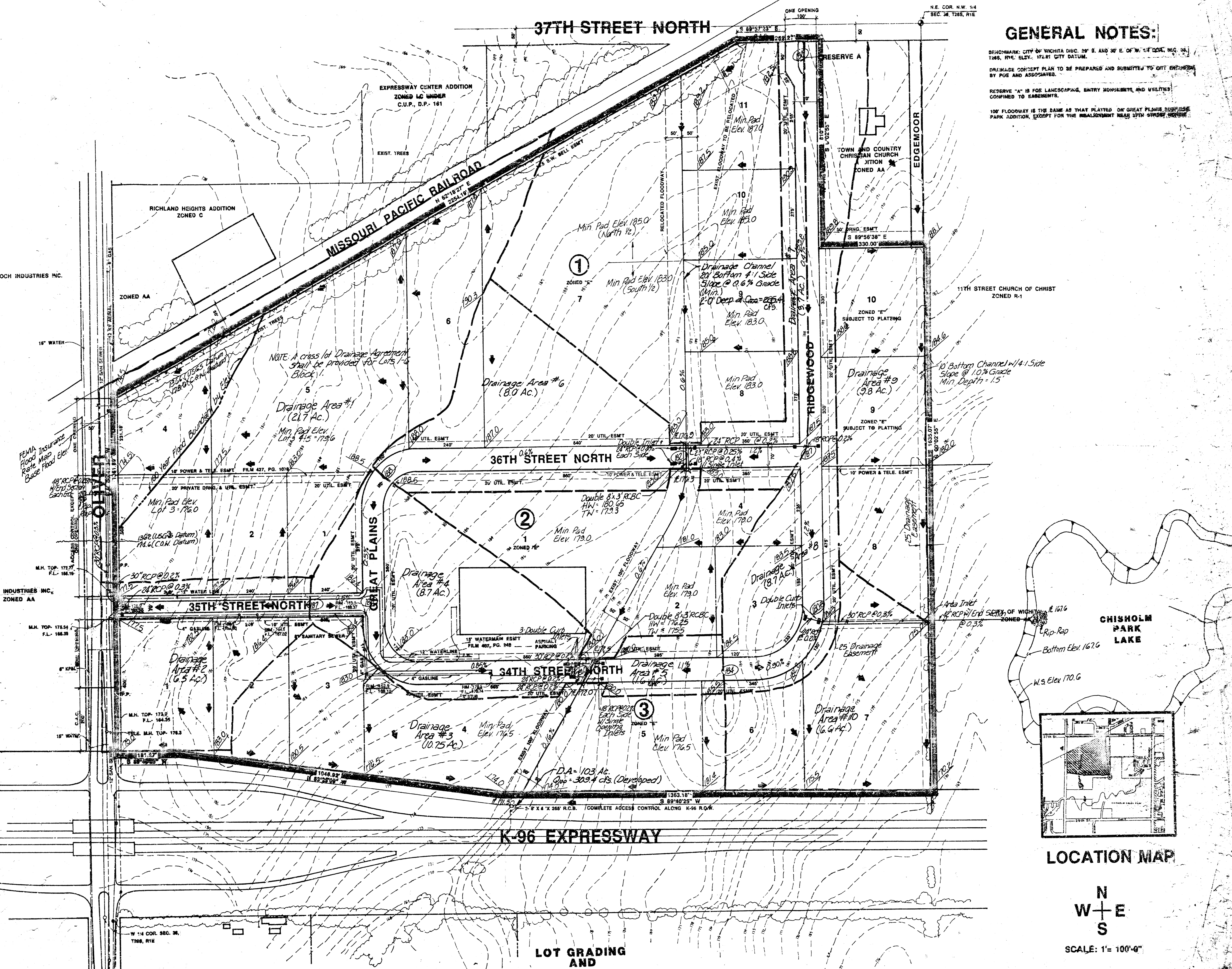
KOCH INDUSTRIES INC.

KOCH INDUSTRIES INC. ZONED AA

PRELIMINARY PLAT (REPLAT OF GREAT PLAINS BUSINESS PARK & NORTH OLIVER IND. PARK ADDITION)

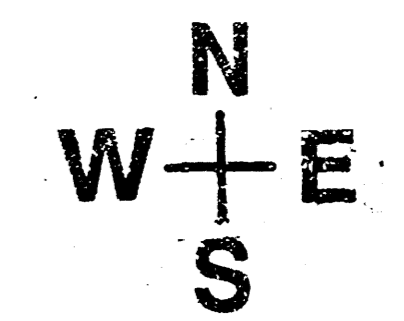
GREAT PLAINS BUSINESS PARK 2ND ADDITION

POE & ASSOCIATES OF KANSAS INC. CONSULTING ENGINEERS



LOT GRADING AND DRAINAGE PLAN

LOCATION MAP



SCALE: 1" = 100'-0"