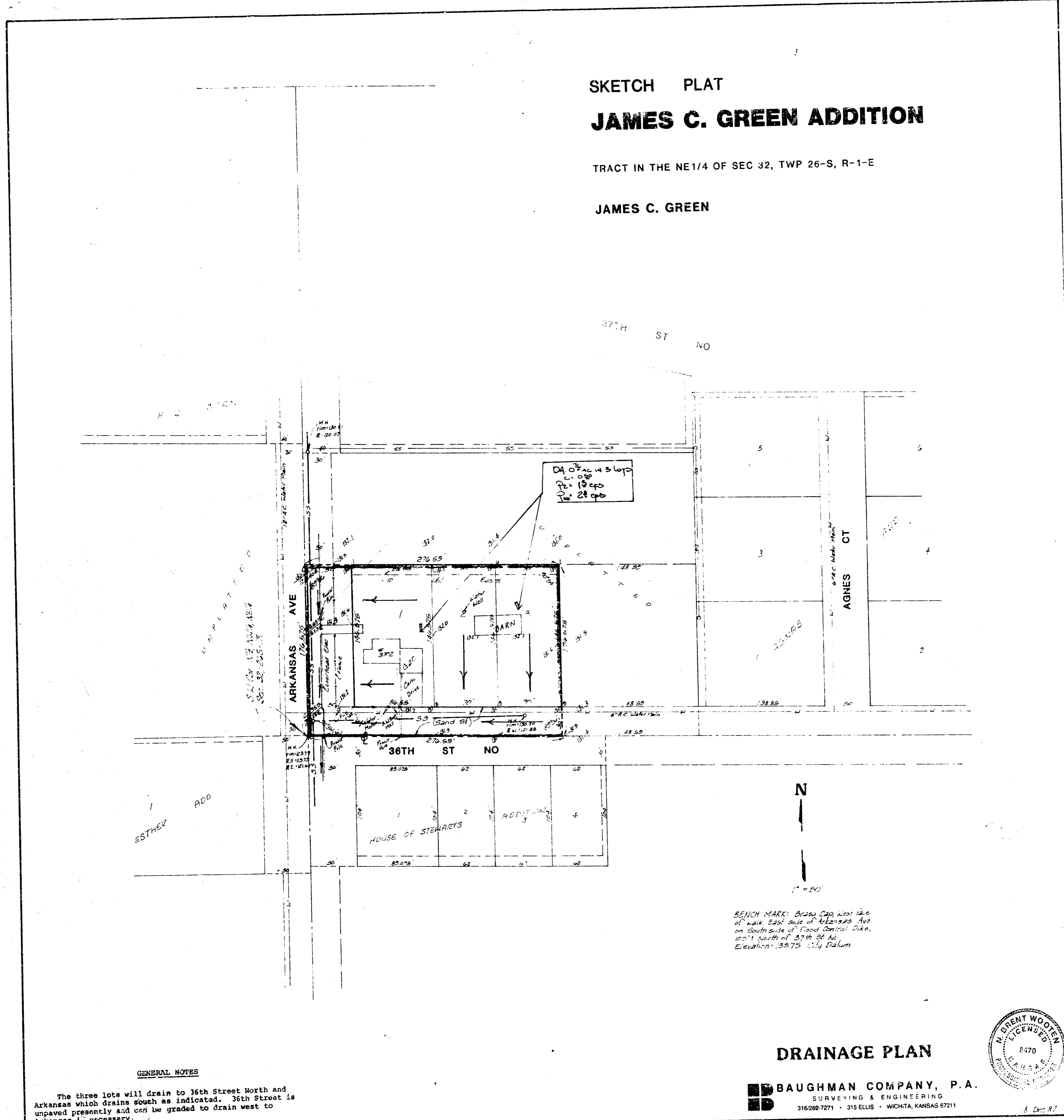


JAMES C. GREEN
(Drainage)

SKETCH PLAT JAMES C. GREEN ADDITION

TRACT IN THE NE 1/4 OF SEC 32, TWP 26-S, R-1-E

JAMES C. GREEN



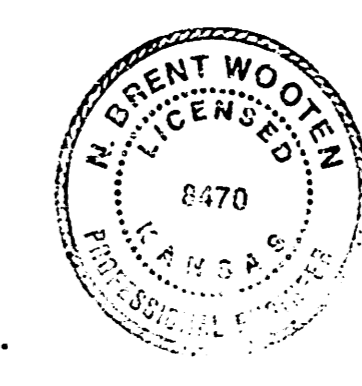
GENERAL NOTES

The three lots will drain to 36th Street North and Arkansas which drains south as indicated. 36th Street is unpaved presently and can be graded to drain west to Arkansas if necessary.

BENCH MARK: Broken Cap west face of walk East Side of Arkansas Ave on South Side of Food Control Dike, 100' S of 36th St. Elevation: 39.75 City Datum

DRAINAGE PLAN

BAUGHMAN COMPANY, P.A.
SURVEYING & ENGINEERING
316-292-7271 • 315 ELLIS • WICHITA, KANSAS 67211



8 Dec 87