

AREA 1A = 0.61 Acre
 Tc = 15 minutes, Group B soil
 $I_s = 4.56/hr$ $I_{100} = 7.37/hr$
 $C_p = 0.35$ $C_{100} = 0.55$
 $Q_p = 1.0$ cfs $Q_{100} = 2.4$ cfs

AREA 1B = 0.44 Acre
 Tc = 15 minutes, Group B soil
 $I_s = 4.56/hr$ $I_{100} = 7.37/hr$
 $C_p = 0.35$ $C_{100} = 0.55$
 $Q_p = 0.7$ cfs $Q_{100} = 1.8$ cfs

AREA 2A = 0.07 Acre
 Tc = 5 minutes, Group B soil
 $I_s = 6.53/hr$ $I_{100} = 10.32/hr$
 $C_p = 0.35$ $C_{100} = 0.55$
 $Q_p = 0.2$ cfs $Q_{100} = 0.3$ cfs

AREA 2B = 2.00 Acre
 Tc = 15 minutes, Group B soil
 $I_s = 4.56/hr$ $I_{100} = 7.37/hr$
 $C_p = 0.35$ $C_{100} = 0.55$
 $Q_p = 3.2$ cfs $Q_{100} = 8.1$ cfs

AREA 2C = 4.15 Acre
 Tc = 15 minutes, Group B soil
 $I_s = 4.56/hr$ $I_{100} = 7.37/hr$
 $C_p = 0.35$ $C_{100} = 0.55$
 $Q_p = 6.64$ cfs $Q_{100} = 16.8$ cfs

AREA 3A = 0.60 Acre
 Tc = 15 minutes, Group B soil
 $I_s = 4.56/hr$ $I_{100} = 7.37/hr$
 $C_p = 0.35$ $C_{100} = 0.55$
 $Q_p = 1.0$ cfs $Q_{100} = 2.4$ cfs

AREA 3B = 0.35 Acre
 Tc = 15 minutes, Group B soil
 $I_s = 4.56/hr$ $I_{100} = 7.37/hr$
 $C_p = 0.35$ $C_{100} = 0.55$
 $Q_p = 0.6$ cfs $Q_{100} = 1.4$ cfs

AREA 3C = 0.22 Acre
 Tc = 15 minutes, Group B soil
 $I_s = 4.56/hr$ $I_{100} = 7.37/hr$
 $C_p = 0.35$ $C_{100} = 0.55$
 $Q_p = 0.3$ cfs $Q_{100} = 0.9$ cfs

NOTE: Minimum Pad Elevation is 1.0' above B.F.E. of Riverside Drainage Channel per FEMA FIRM panel 200328 0035B.

Capacity of 30" CMP at 57th and Hydraulic is 30 cfs at 3.5' HWD



1" = 100'

C.A.C. = COMPLETE ACCESS CONTROL

MINIMUM PAD ELEVATION FOR LOTS 1, 2 & 3 FOR LOWEST FLOOR OF STRUCTURE
 ELEVATION = 126.4 M.S.L.
 76.6 CITY DATUM

BENCH MARK:
 CITY STANDARD DISC. 44' W & 30' S OF CENTER-LINES OF 55TH ST SO AND HYDRAULIC AVE
 ELEV = 76.57 CITY DATUM

DRAINAGE AND LOT GRADING PLAN GRIFFIN PARK 2ND ADDITION

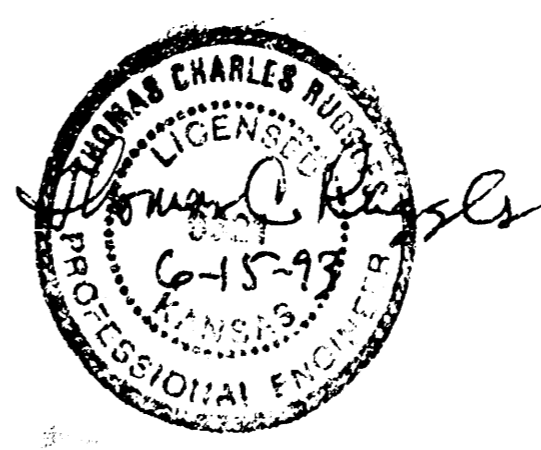
WICHITA, SEDGWICK COUNTY, KANSAS

THE WEST 21 ACRES OF THE N1/2 OF THE NW1/4 OF SEC 27, TWP. 28-S, R-1-E OF THE 6TH P.M., SEDGWICK COUNTY, KANSAS, EXCEPT THE NORTH 731 FEET THEREOF.

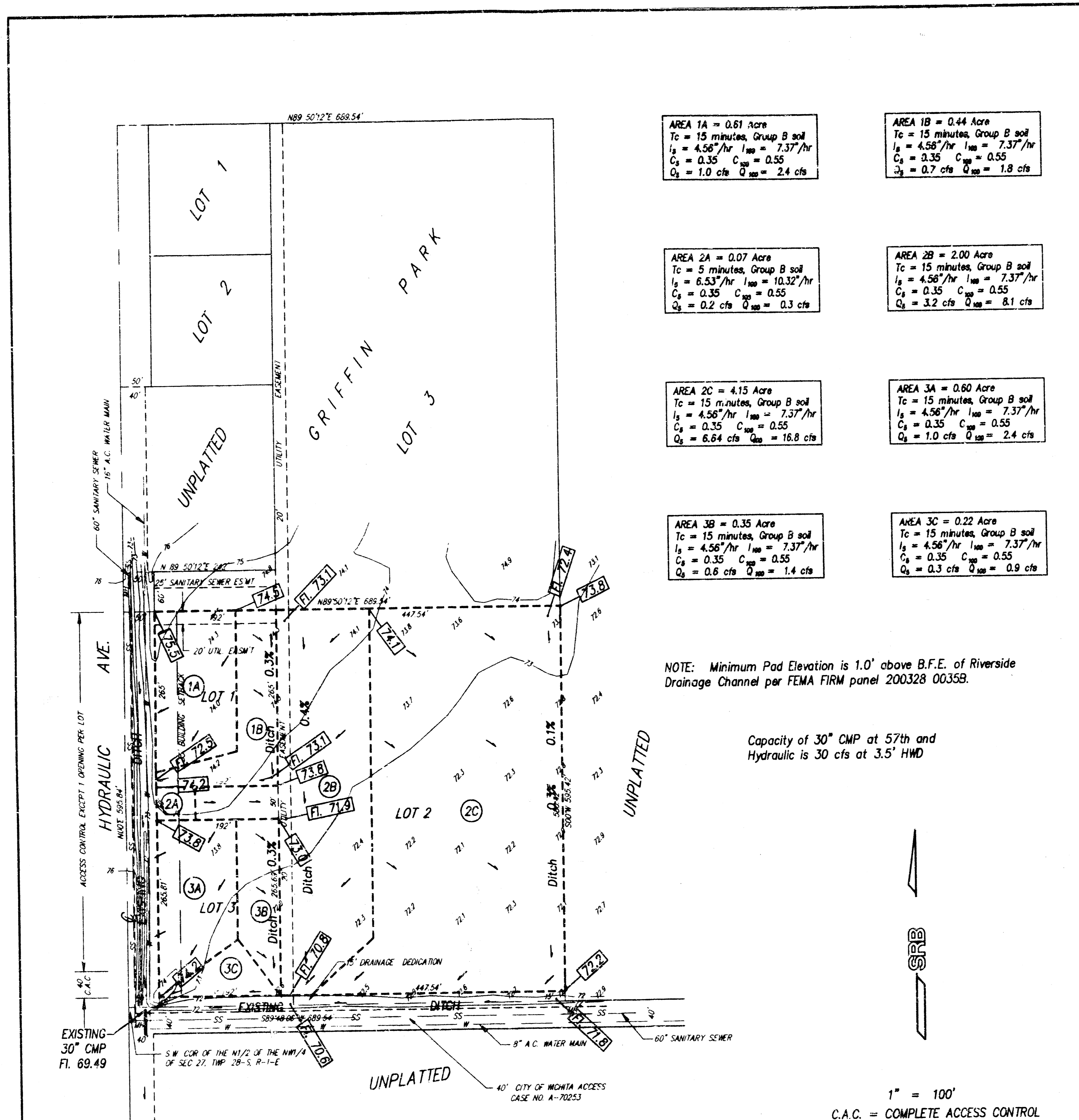
CROWN COMMERCIAL BUILDERS, INC.
 BRUCE GRIFFIN, VICE-PRESIDENT
 1125 S. ROCK ROAD - SUITE 9
 WICHITA, KS 67207

PH (316) 681-3700

SRB 541 SOUTH HILLSIDE 316-982-7754
 WICHITA, KANSAS 67211 FAX: 316-793-7932
SAVDY, RUGGLES & BOHM, P.A.
 ENGINEERING & SURVEYING



REV. JUNE 15, 1993
 MAY 10, 1993



AREA 1A = 0.61 Acre Tc = 15 minutes, Group B soil $I_p = 4.56"/hr$ $I_{100} = 7.37"/hr$ $C_p = 0.35$ $C_{100} = 0.55$ $Q_p = 1.0$ cfs $Q_{100} = 2.4$ cfs	AREA 1B = 0.44 Acre Tc = 15 minutes, Group B soil $I_p = 4.56"/hr$ $I_{100} = 7.37"/hr$ $C_p = 0.35$ $C_{100} = 0.55$ $Q_p = 0.7$ cfs $Q_{100} = 1.8$ cfs
AREA 2A = 0.07 Acre Tc = 5 minutes, Group B soil $I_p = 6.53"/hr$ $I_{100} = 10.32"/hr$ $C_p = 0.35$ $C_{100} = 0.55$ $Q_p = 0.2$ cfs $Q_{100} = 0.3$ cfs	AREA 2B = 2.00 Acre Tc = 15 minutes, Group B soil $I_p = 4.56"/hr$ $I_{100} = 7.37"/hr$ $C_p = 0.35$ $C_{100} = 0.55$ $Q_p = 3.2$ cfs $Q_{100} = 8.1$ cfs
AREA 2C = 4.15 Acre Tc = 15 minutes, Group B soil $I_p = 4.56"/hr$ $I_{100} = 7.37"/hr$ $C_p = 0.35$ $C_{100} = 0.55$ $Q_p = 6.64$ cfs $Q_{100} = 16.8$ cfs	AREA 3A = 0.60 Acre Tc = 15 minutes, Group B soil $I_p = 4.56"/hr$ $I_{100} = 7.37"/hr$ $C_p = 0.35$ $C_{100} = 0.55$ $Q_p = 1.0$ cfs $Q_{100} = 2.4$ cfs
AREA 3B = 0.35 Acre Tc = 15 minutes, Group B soil $I_p = 4.56"/hr$ $I_{100} = 7.37"/hr$ $C_p = 0.35$ $C_{100} = 0.55$ $Q_p = 0.6$ cfs $Q_{100} = 1.4$ cfs	AREA 3C = 0.22 Acre Tc = 15 minutes, Group B soil $I_p = 4.56"/hr$ $I_{100} = 7.37"/hr$ $C_p = 0.35$ $C_{100} = 0.55$ $Q_p = 0.3$ cfs $Q_{100} = 0.9$ cfs

NOTE: Minimum Pad Elevation is 1.0' above B.F.E. of Riverside Drainage Channel per FEMA FIRM panel 200328 0035B.

Capacity of 30" CMP at 57th and Hydraulic is 30 cfs at 3.5' HWD

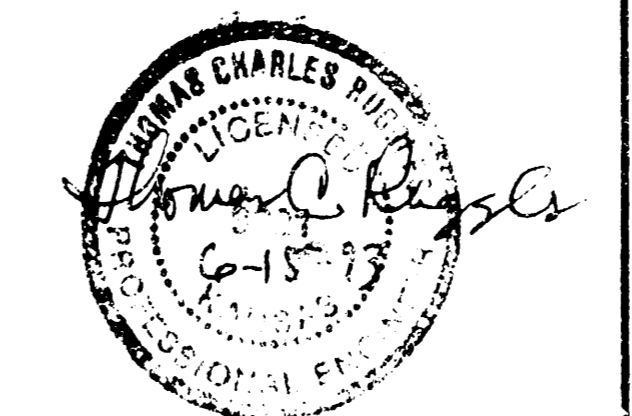
DRAINAGE AND LOT GRADING PLAN GRIFFIN PARK 2ND ADDITION

WICHITA, SEDGWICK COUNTY, KANSAS

THE WEST 21 ACRES OF THE N1/2 OF THE NW1/4 OF SEC 27, TWP. 28-S, R-1-E OF THE 6TH P.M., SEDGWICK COUNTY, KANSAS, EXCEPT THE NORTH 731 FEET THEREOF.

CROWN COMMERCIAL BUILDERS, INC.
BRUCE GRIFFIN, VICE-PRESIDENT
1125 S. ROCK ROAD - SUITE 9
WICHITA, KS 67207
PH (316) 681-3700

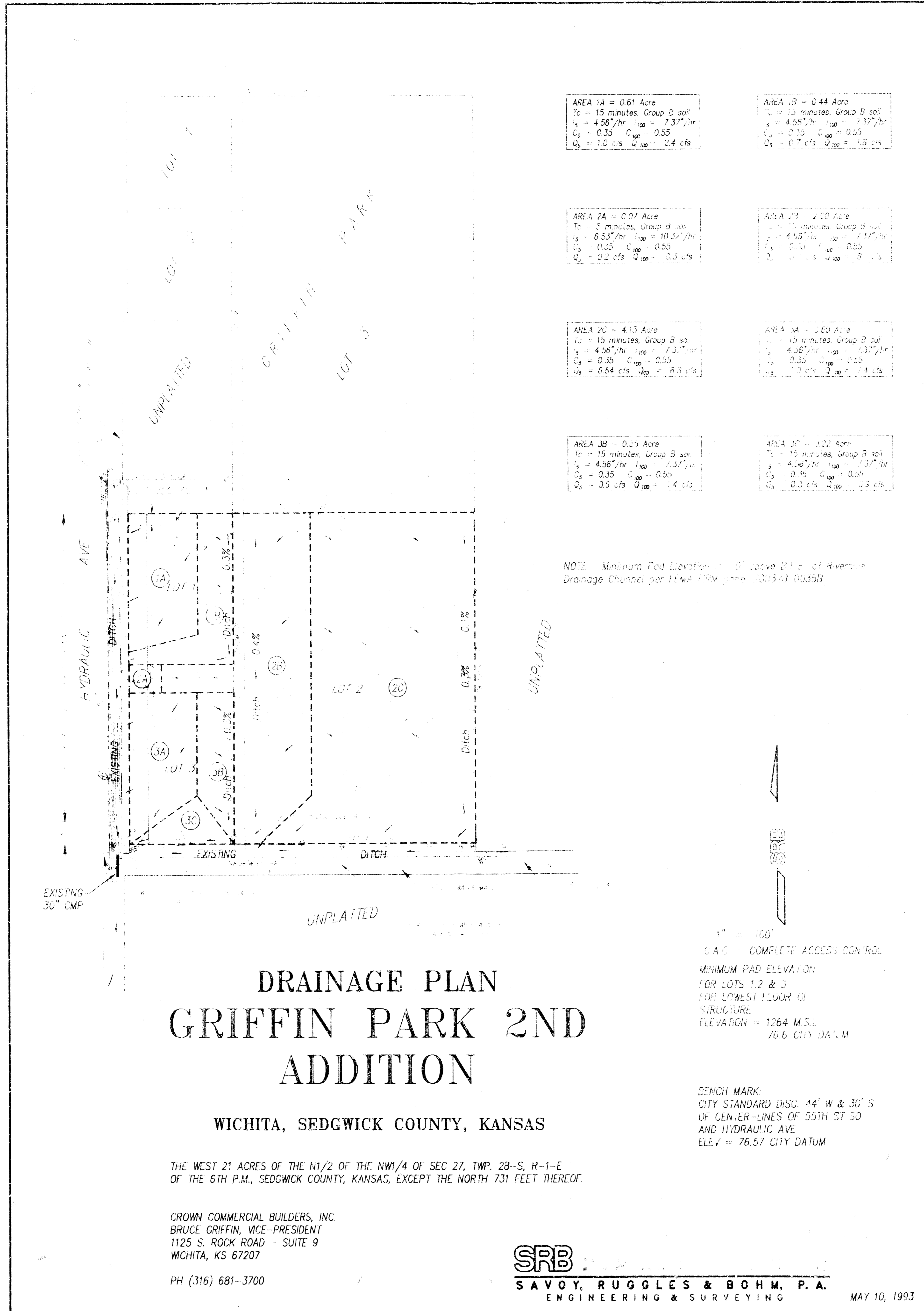
SRB 641 SOUTH HILLSIDE WICHITA, KANSAS 67211 316-652-7754 FAX 652-7952
SAVOY, RUGGLES & BONM, P. A.
ENGINEERING & SURVEYING



REV. JUNE 15, 1993
MAY 10, 1993

1" = 100'
C.A.C. = COMPLETE ACCESS CONTROL
MINIMUM PAD ELEVATION
FOR LOTS 1, 2 & 3
FOR LOWEST FLOOR OF
STRUCTURE
ELEVATION = 1264 M.S.L.
76.6 CITY DATUM

BENCH MARK:
CITY STANDARD DISC. 44' W & 30' S
OF CENTER-LINES OF 55TH ST SO
AND HYDRAULIC AVE
ELEV = 76.57 CITY DATUM



NOTE: Minimum Pad Elevation = 2' above 2' of Reverse Drainage Channel per HWA 15M June 10, 1988 88355

DRAINAGE PLAN GRIFFIN PARK 2ND ADDITION

WICHITA, SEDGWICK COUNTY, KANSAS

THE WEST 21 ACRES OF THE N1/2 OF THE NW1/4 OF SEC 27, TWP. 28-S, R-1-E OF THE 6TH P.M., SEDGWICK COUNTY, KANSAS, EXCEPT THE NORTH 731 FEET THEREOF.

CROWN COMMERCIAL BUILDERS, INC.
BRUCE GRIFFIN, VICE-PRESIDENT
1125 S. ROCK ROAD - SUITE 9
WICHITA, KS 67207

PH (316) 681-3700

SRB
SAVOY, RUGGLES & BOHM, P. A.
ENGINEERING & SURVEYING

MAY 10, 1993

1" = 100'
C.A.C. = COMPLETE ACCESS CONTROL
MINIMUM PAD ELEVATION
FOR LOTS 1, 2 & 3
FOR LOWEST FLOOR OF
STRUCTURE
ELEVATION = 1264 M.S.L.
76.6 CITY DATUM

BENCH MARK
CITY STANDARD DISC. 44' W & 30' S
OF CENTER-LINES OF 55TH ST 30
AND HYDRAULIC AVE.
ELEV. = 76.57 CITY DATUM