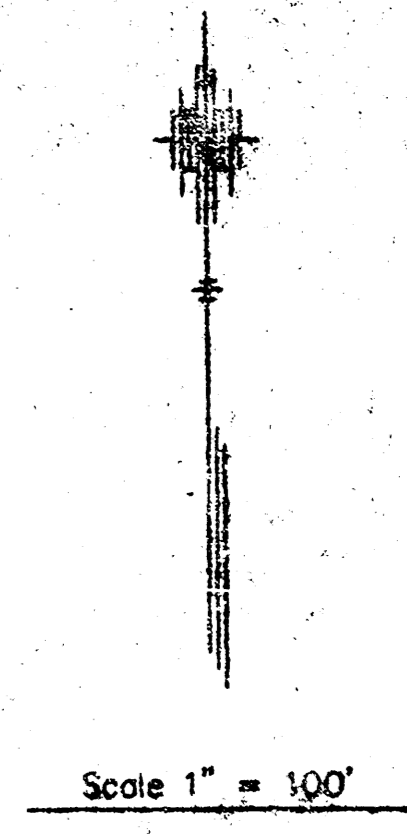
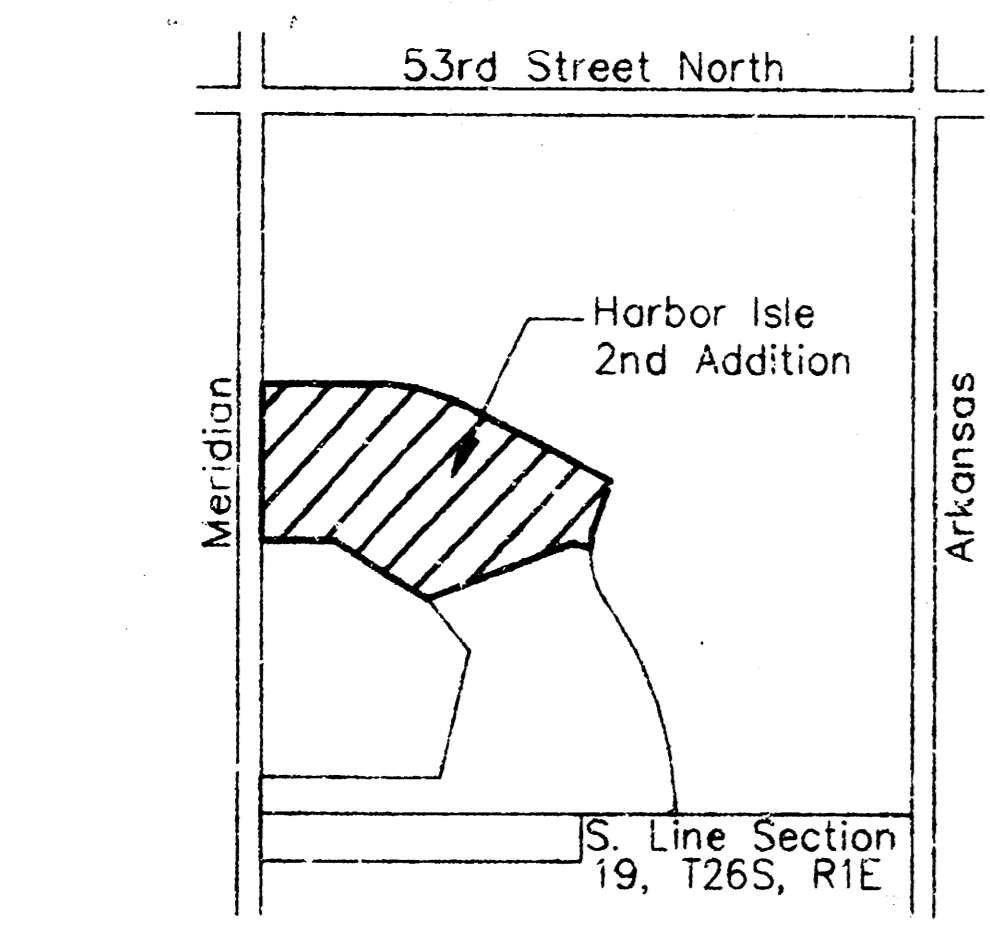


NOTES:

1. Lot Grading for Lots 5 through Lots 31 of Block 1 shall continue north beyond north property line and shall terminate at Elevation 140.00 on the south slope of existing Sedgewick County Drainage Channel.
2. The south end of the existing 18" CMP's which extend through the south slope of the existing Sedgewick County Drainage Channel shall be cut off and plugged at a depth of two feet below final grade.



APPROVED
DRAINAGE PLAN



WATER LEVEL
127.6

RESERVE D

- LEGEND:**
- F 47.5
G 46.8 - INDICATES NO VIEWOUT BASEMENT
(F-Indicates Top of Foundation Elevation)
(G-Indicates Garage Floor Elevation)
 - V 42.5
F 47.5
G 46.8 - INDICATES PROPOSED VIEW OUT BASEMENT
(V-Indicates Top of Ground Elev. @ Rear Wall)
(F-Indicates Top of Foundation Elevation)
(G-Indicates Garage Floor Elevation)
 - W 39.5
F 47.5
G 46.8 - INDICATES PROPOSED WALKOUT BASEMENT
(F-Indicates Top of Foundation Elevation)
(G-Indicates Garage Floor Elevation)
(W-Indicates Basement Floor Elevation)
 - POINT**
42.2
DESC - Indicates Proposed Finish Grade at Front Lot Corner. Subtract 0.5 feet for Top of Curb Grade.
 - Indicates Drainage Path

NOTES:

1. The minimum low opening for homes built in this addition shall be 134.0 (City of Wichita Datum) or 1321.4 (MSL Datum).
2. The minimum basement floor elevation for homes built in this addition shall be 131.0 (City of Wichita Datum) or 1318.4 (MSL Datum).

BENCHMARKS

1. "□" cut on southwest corner of north headwall at Meridian Avenue and Wilco. Elev. 139.85 (City of Wichita Datum)

LOT GRADING PLAN- REVISED

HARBOR ISLE 2ND ADDITION

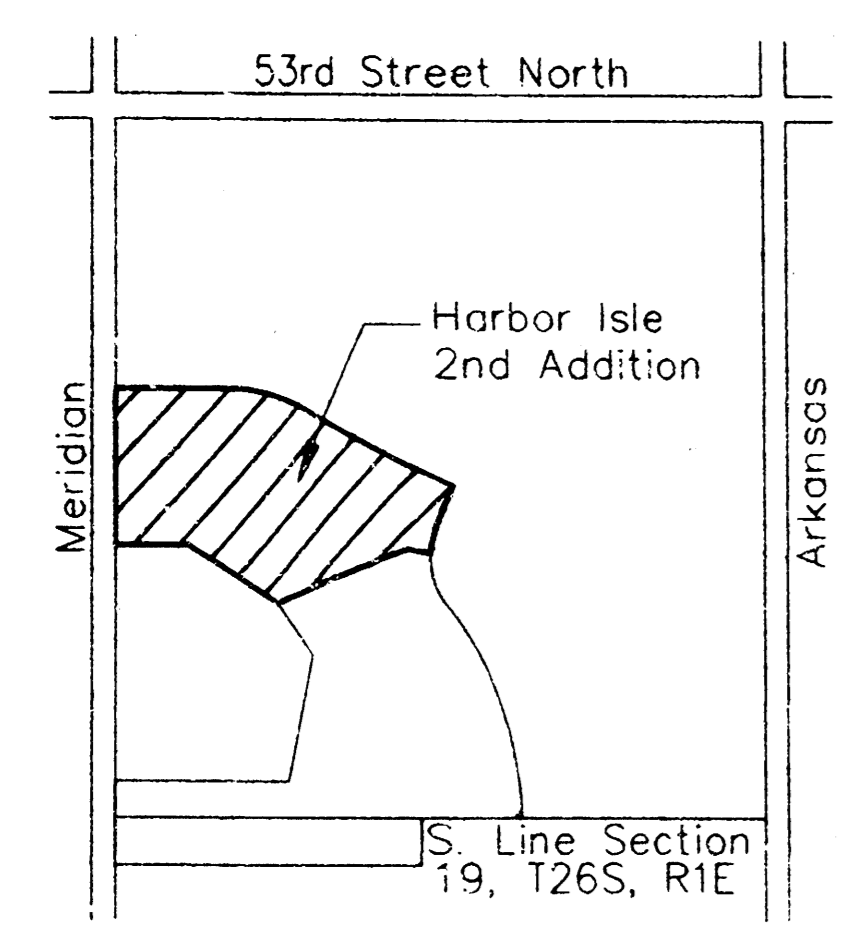
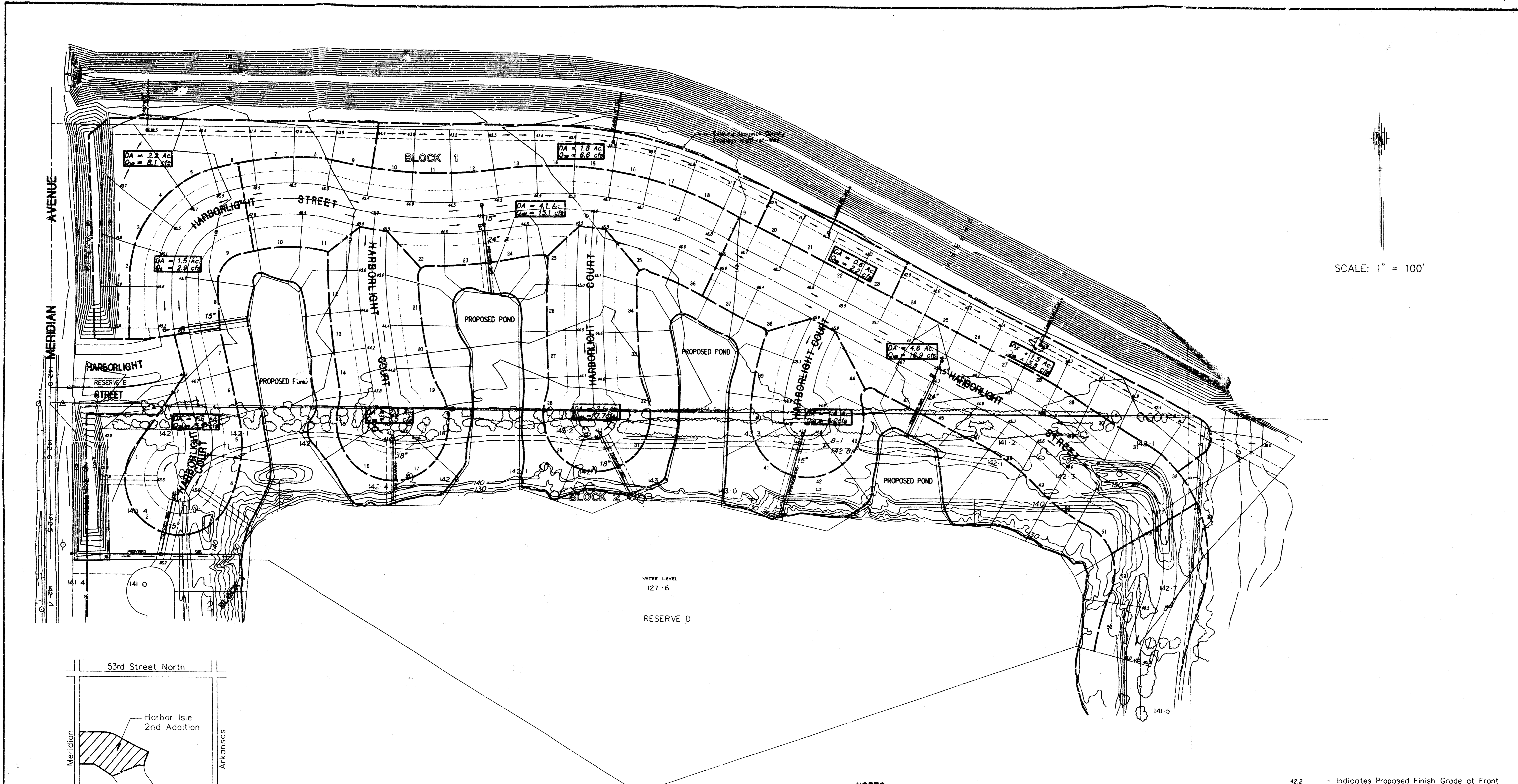
TO WICHITA - SEDGWICK COUNTY, KANSAS

DATE: OCTOBER 8, 1988

POE & ASSOCIATES OF KANSAS, INC.
CONSULTING ENGINEERS
5840 E. Central Suite 200 Wichita, KS 67208 316/688-4114

F:\MAPS\CD\15688-1\EN\rev-11\grad.dwg Thu Oct 08 13:13:44 1988 GREG

D:\WORK\1997\1997-12-22\1997-12-22.dwg File Date: 23 09:46:21 1997 James Lambert - POE & ASSOCIATES OF KANSAS, INC.



WATER LEVEL
127.6

RESERVE D

NOTES:

1. The minimum low opening for homes built in this addition shall be 134.0 (City of Wichita Datum) or 1321.4 (MSL Datum)
2. The minimum basement floor elevation for homes built in this addition shall be 131.0 (City of Wichita Datum) or 1318.4 (MSL Datum)

- 42.2 - Indicates Proposed Finish Grade at Front Lot Corner. Subtract 0.5 feet for Top of Curb Grade.
- Indicates Drainage Path

BENCHMARK

1. "□" cut on southwest corner of north headwall at Meridian Avenue and Milro. Elev. 139.85 (City of Wichita Datum)

DRAINAGE PLAN

HARBOR ISLE 2ND ADDITION

TO WICHITA - SEDGWICK COUNTY, KANSAS

DATE: DECEMBER 22, 1997

POE & ASSOCIATES OF KANSAS, INC.
CONSULTING ENGINEERS
5940 E. Central Suite 200 ■ Wichita KS 67208 ■ 316/685-4114