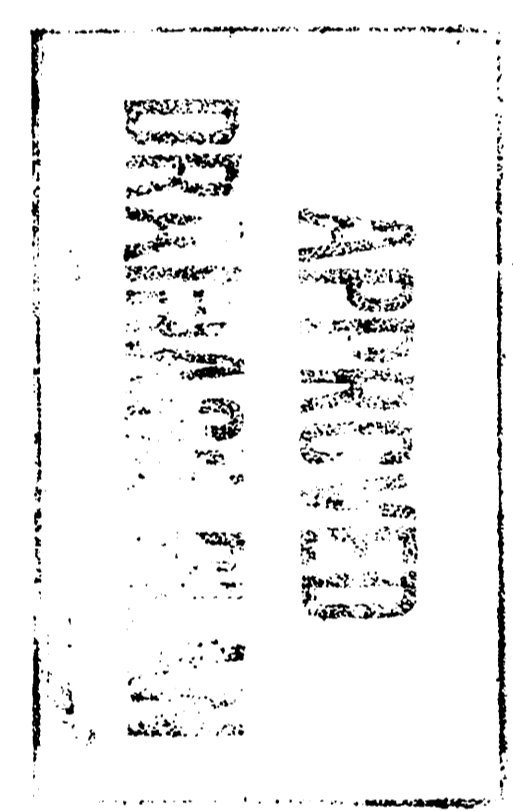
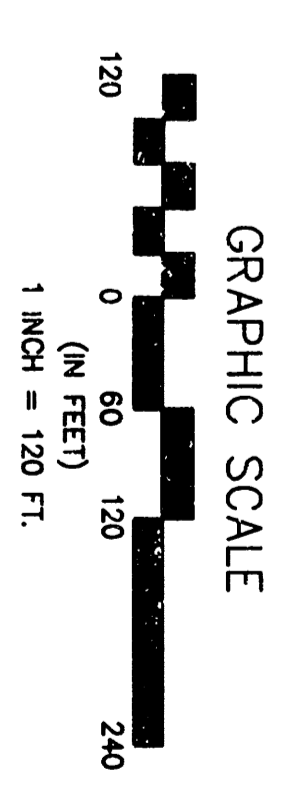
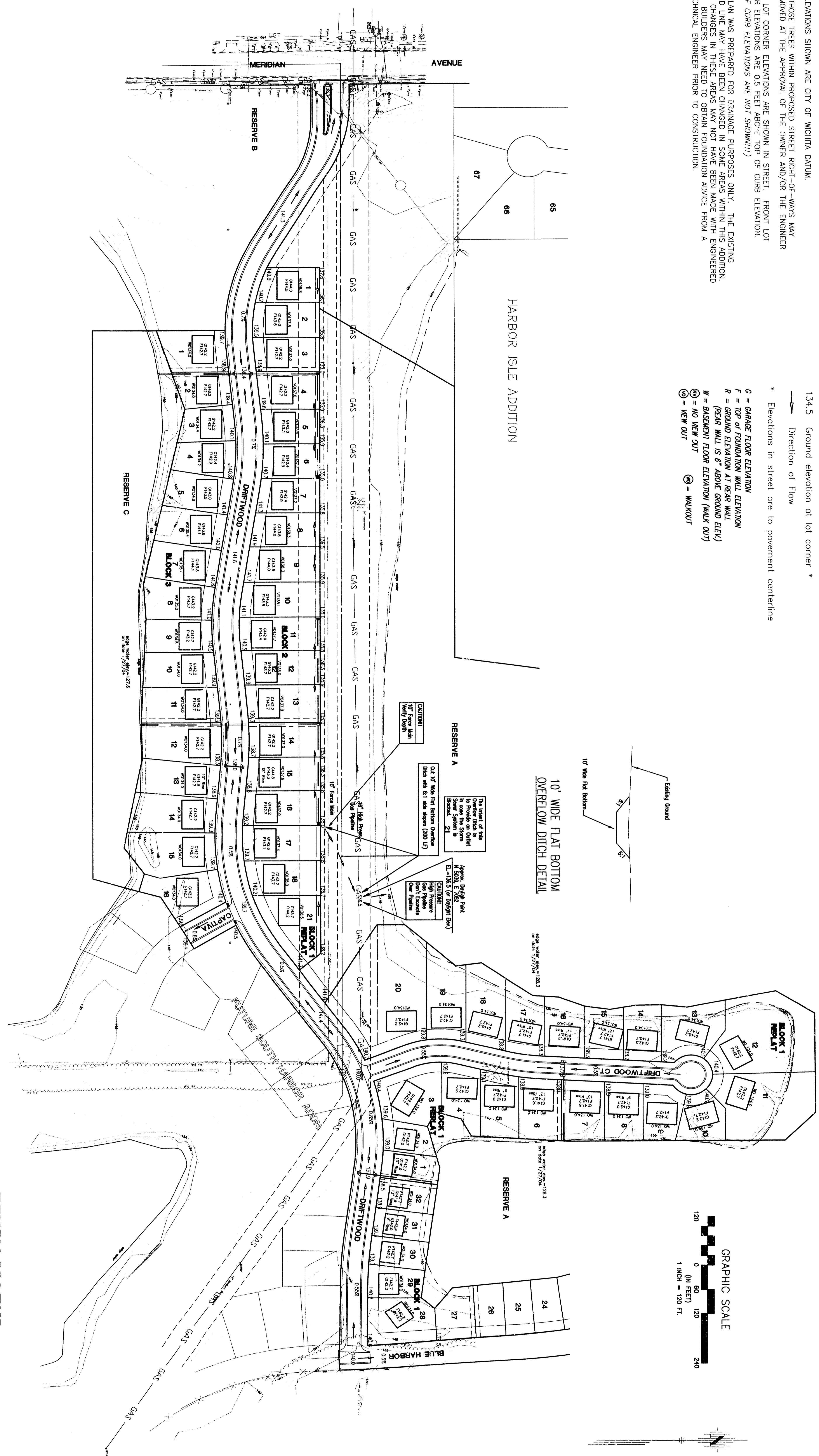


**NOTES**

1. ALL ELEVATIONS SHOWN ARE CITY OF WICHITA DATUM.
2. ONLY THOSE TREES WITHIN PROPOSED STREET RIGHT-OF-WAYS MAY BE REMOVED AT THE APPROVAL OF THE OWNER AND/OR THE ENGINEER.
3. FRONT LOT CORNER ELEVATIONS ARE SHOWN IN STREET. FRONT LOT CORNER ELEVATIONS ARE 0.5 FEET ABOVE TOP OF CURB ELEVATION. (TOP OF CURB ELEVATIONS ARE NOT SHOWN!!!)
4. THIS PLAN WAS PREPARED FOR GRADING PURPOSES ONLY. THE EXISTING GRADE AND PROPOSED CHANGES ARE SHOWN WITHIN THE LOT. GRADE CHANGES IN THESE AREAS MAY NOT HAVE BEEN MADE WITH ENGINEERED PLANS. BUILDERS MAY NEED TO OBTAIN FOUNDATION ADVICE FROM A GEOTECHNICAL ENGINEER PRIOR TO CONSTRUCTION.

**LEGEND**

- 134.5 Ground elevation of lot corner \*
- Direction of Flow
- \* Elevations in street are to pavement centerline
- G = GARAGE FLOOR ELEVATION  
 F = TOP OF FOUNDATION WALL ELEVATION  
 R = GROUND ELEVATION AT REAR WALL (REAR WALL IS 6' ABOVE GROUND ELEV)  
 W = BASEMENT FLOOR ELEVATION (WALK OUT)  
 (N) = NO NEW DIRT (N) = WALKOUT  
 (N) = NEW DIRT



*James Armour*  
 9-7-04

**BENCH MARKS**

- City of Wichita Datum
1. " + " Cut on NW corner conc. pad at lift station, 115.4' NW of SW Cor. Sec. 19-1265-R1E Elevation 140.14
  2. Top steel "T" post set flush w/ground 4' N. of R/W corner @ SW corner of Driftwood & Driftwood Court Elevation 139.17
  3. COW Bench Mark at NW corner of Meridian & Keywest 59' W. and 32.3' N. of center line both. 11.8' N. of north curb Keywest. 4.8' NW of center P.P. 23.4' SE of SE cor. conc. wall Elevation 141.96

CHECKED WITH STREET GRADERS  
 SEPTEMBER 7, 2004 BY J.M.U.

No.	Date	By	Appr. used	Revision

HARBOR ISLE 3RD ADDITION  
 STREET IMPROVEMENTS  
 LOT GRADING PLAN  
 CITY OF WICHITA, KANSAS  
 JAMES ARMOUR, P.E. - CITY ENGINEER

**POE & ASSOCIATES, INC.**  
 CONSULTING ENGINEERS  
 5940 E. Central, Suite 200 ■ Wichita, KS 67208-4242  
 Phone 316/685-4114 ■ FAX 316/685-4444

**FINAL**  
 Designed By: J. Ubert / J. Dickman  
 Drawn By: J. Dickman  
 Date: March 2004

**DRAINAGE PLAN**  
 REPLAT OF HARBOR ISLE 3RD

Final State minimum 10 Sept 2004