

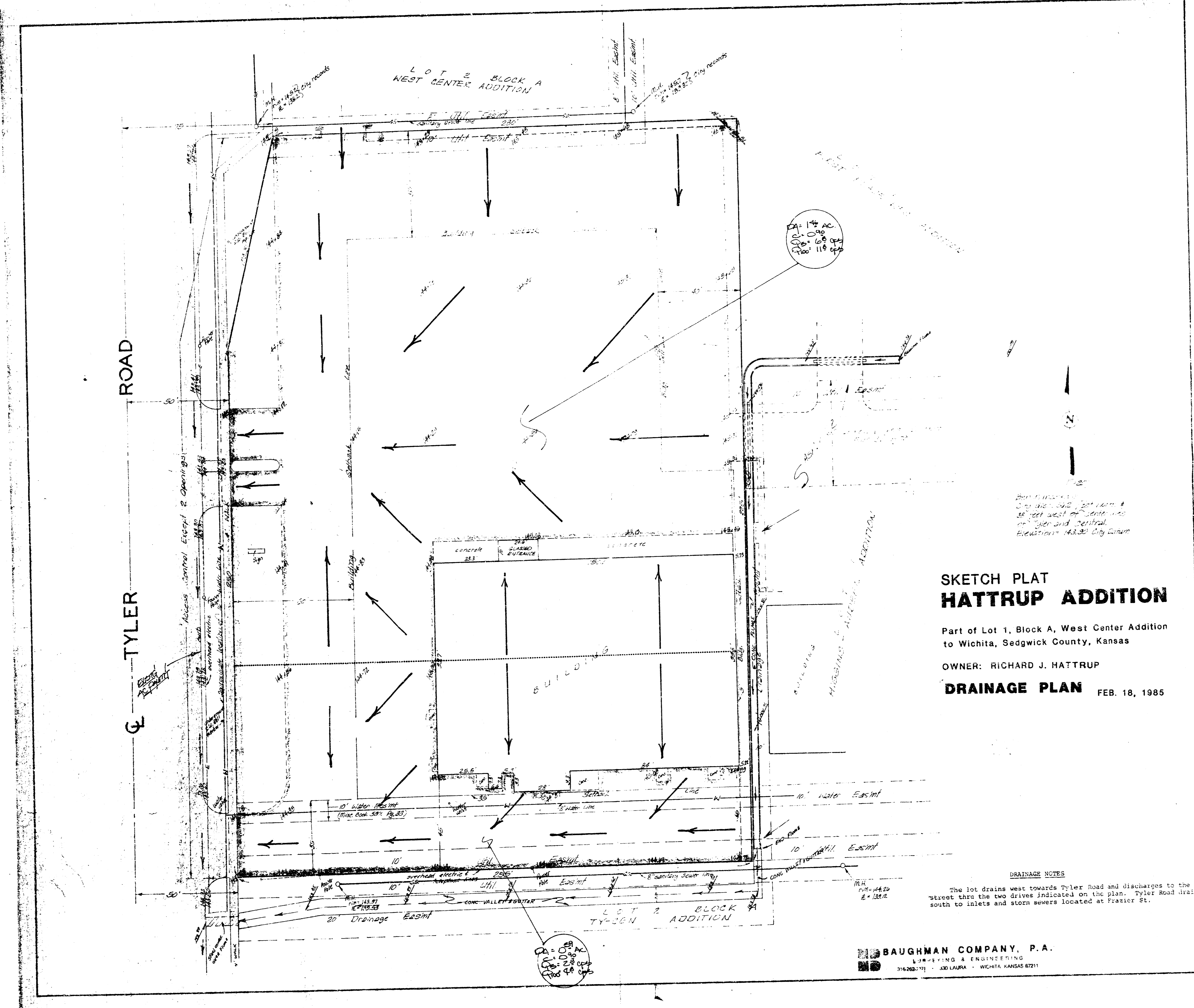
SKETCH PLAT  
**HATTRUP ADDITION**

Part of Lot 1, Block A, West Center Addition  
to Wichita, Sedgwick County, Kansas

**DRAINAGE PLAN** FEB. 18, 1985  
REVISED DECEMBER 14, 1985

The drainage system shown in this plan is designed to be installed through the two drives indicated on the plan. This plan is subject to change without notice.

**BAUGHMAN COMPANY, P.A.**  
Sedgwick County, Kansas  
1221 S. W. 10th St., Wichita, Kansas 67202



**SKETCH PLAT  
HATTRUP ADDITION**

Part of Lot 1, Block A, West Center Addition  
to Wichita, Sedgwick County, Kansas

OWNER: RICHARD J. HATTRUP

**DRAINAGE PLAN** FEB. 18, 1985

**DRAINAGE NOTES**

The lot drains west towards Tyler Road and discharges to the street thru the two drives indicated on the plan. Tyler Road drains south to inlets and storm sewers located at Fraxier St.

**BAUGHMAN COMPANY, P.A.**  
ENGINEERING & ARCHITECTURE  
314 262-7211 - 330 LAURA - WICHITA, KANSAS 67211