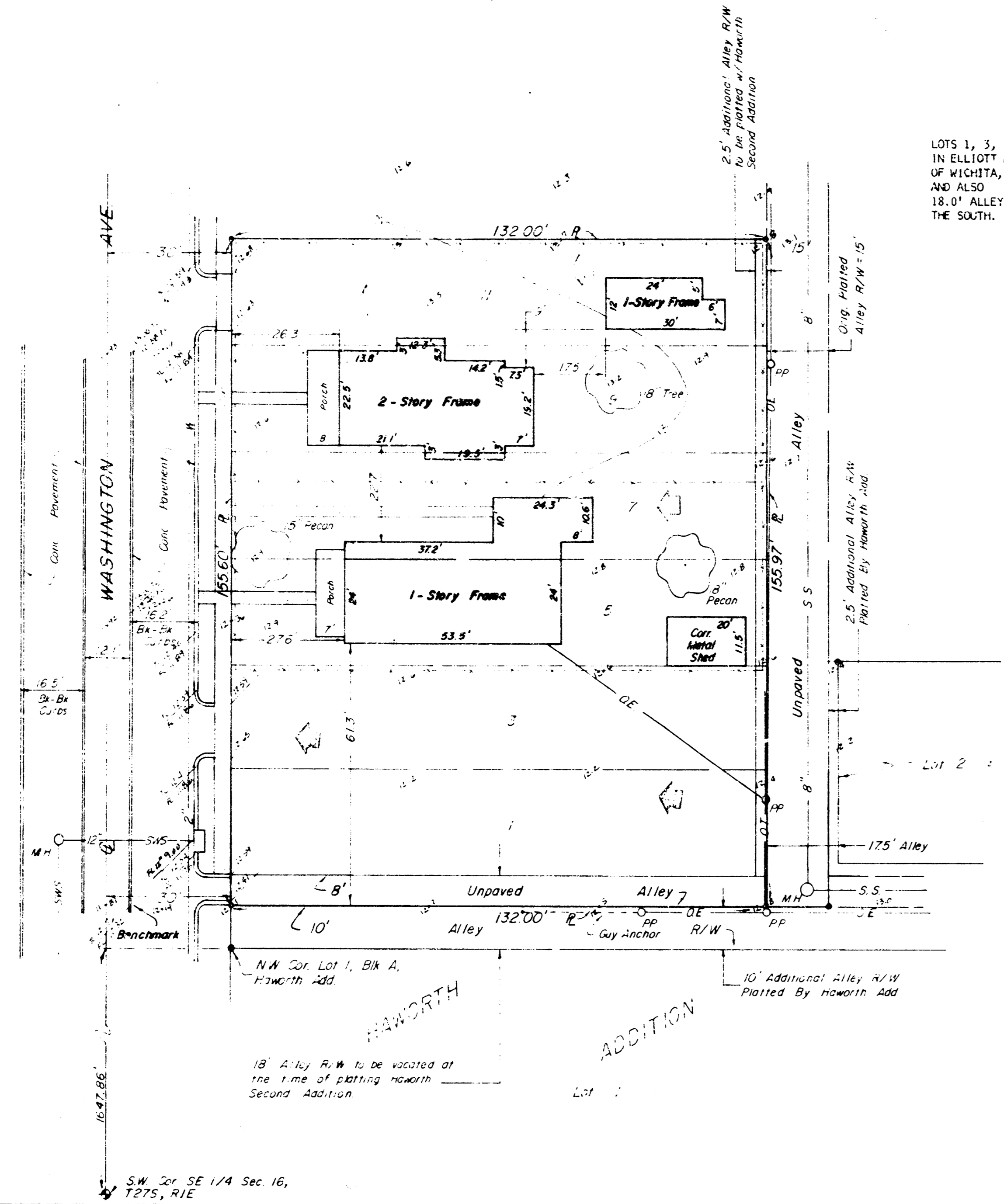


DRAINAGE CONCEPT FOR
PRELIMINARY PLAT
of
HAWORTH SECOND ADDITION
To Wichita, Sedgwick Co, Ks.



LEGAL DESCRIPTION

LOTS 1, 3, 5, 7, 9 AND 11 ON WASHINGTON AVENUE
IN ELLIOTT AND HAWORTH'S ADDITION TO THE CITY
OF WICHITA, SEDGWICK COUNTY, KANSAS,
AND ALSO
18.0' ALLEY RIGHT-OF-WAY ADJACENT THERETO ON
THE SOUTH.



Legend -

- W = Water Main
- G = Gas Main
- SS = Sanitary Sewer
- M.H. = Manhole
- SWS = Storm Water Sewer
- SE = Spot Elevation
- OE = Overhead Electric
- OT = Overhead Telephone
- PP = Power Pole
- = Surface Water Flow Direction

BENCHMARK -

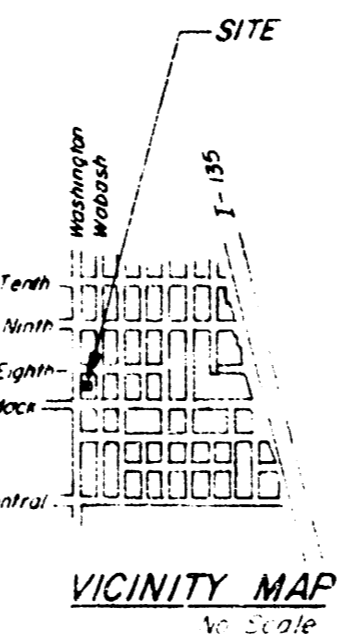
Top of W. Curb, N. Bound Washington Ave.
on S. Property Line Extended.
Elev. 112.76 City Datum.

Add 100.00 to spot elevations to convert
to city datum.

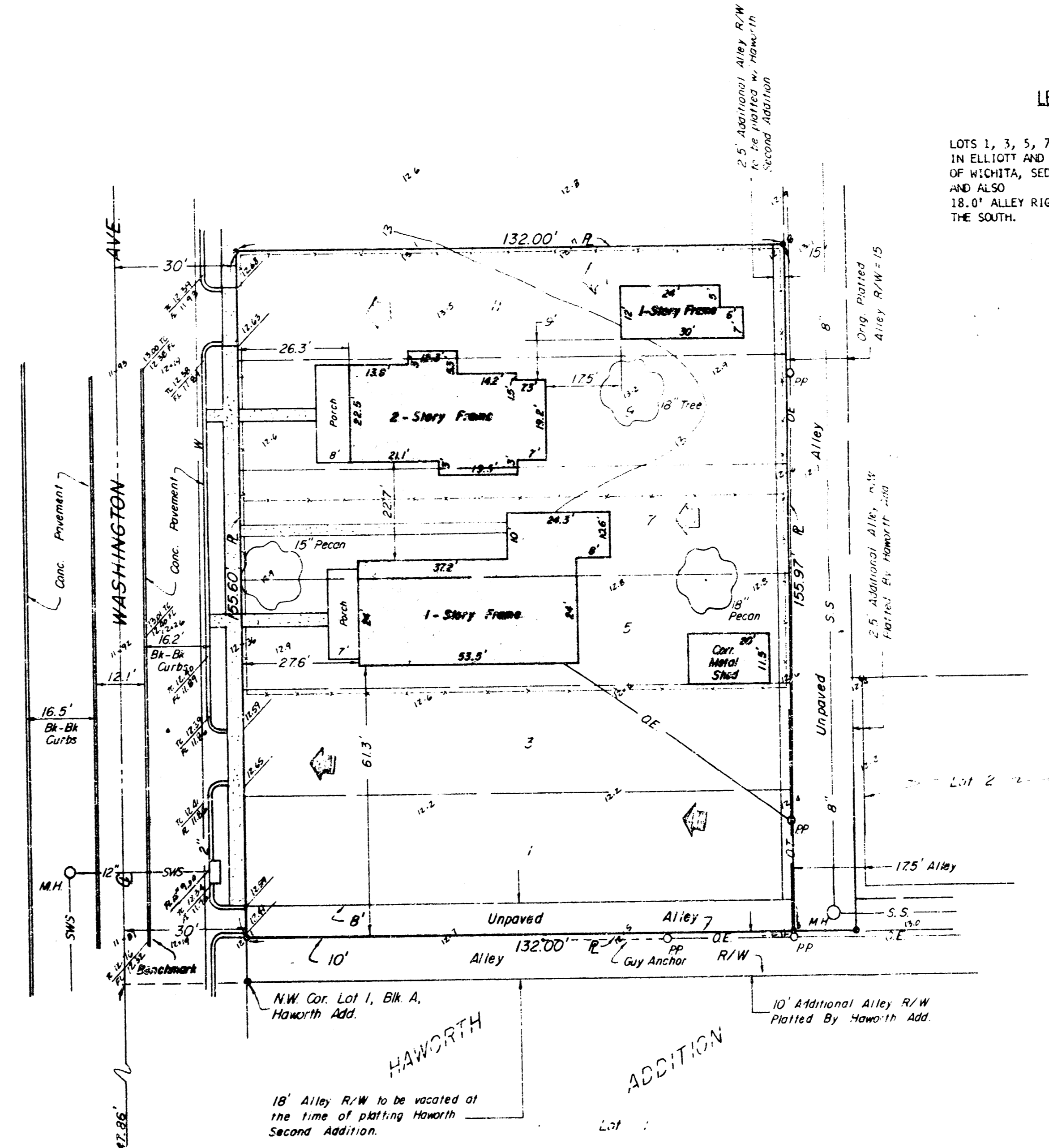
NOTE :

UPON DEVELOPMENT, DRAINAGE FROM
ROOF AND PAVED AREAS TO BE DIRECT-
ED TO WASHINGTON AVENUE, VIA DRIVE
OPENINGS, FLUMES OR OTHER APPROVED
OPENINGS.

Moehring & Associates
Consulting Engineers
Wichita
May 11, 1987

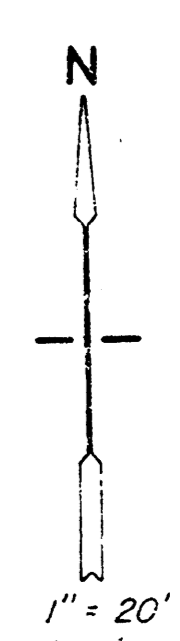


DRAINAGE CONCEPT FOR
PRELIMINARY PLAT
of
HAWORTH SECOND ADDITION
To Wichita, Sedgwick Co, Ks.



LEGAL DESCRIPTION

LOTS 1, 3, 5, 7, 9 AND 11 ON WASHINGTON AVENUE
IN ELLIOTT AND HAWORTH'S ADDITION TO THE CITY
OF WICHITA, SEDGWICK COUNTY, KANSAS,
AND ALSO
18.0' ALLEY RIGHT-OF-WAY ADJACENT THERETO ON
THE SOUTH.



Legend -

- W = Water Main
- G = Gas Main
- SS = Sanitary Sewer
- M.H. = Manhole
- SWS = Storm Water Sewer
- SE = Spot Elevation
- OE = Overhead Electric
- OT = Overhead Telephone
- PP = Power Pole
- = Surface Water Flow Direction

BENCHMARK -

Top of W. Curb, N. Bound Washington Ave.
on S. Property Line Extended.
Elev. 112.76 City Datum.

Add 100.00 to spot elevations to convert
to city datum.

NOTE :

UPON DEVELOPMENT, DRAINAGE FROM
ROOF AND PAVED AREAS TO BE DIRECT-
ED TO WASHINGTON AVENUE, VIA DRIVE
OPENINGS, FLUMES OR OTHER APPROVED
OPENINGS.

Moehring & Associates
Consulting Engineers
Wichita
May 11, 1987