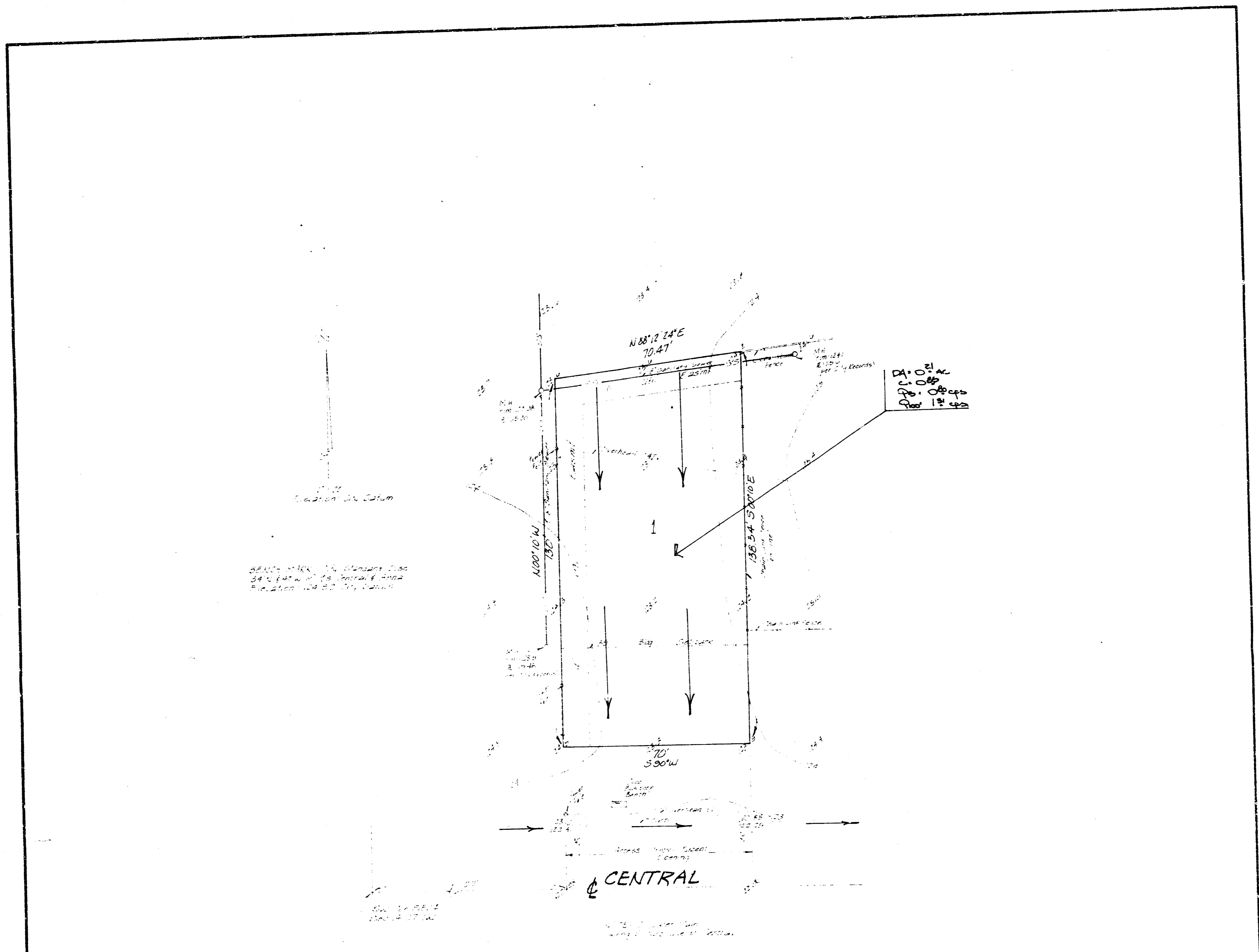


HENDRICKSON ADDITION
(Trailing)



SKETCH PLAT

HENDRICKSON ADDITION

LOT 2, BLOCK A, GROVE'S THIRD ADDITION,
AN ADDITION IN WICHITA, SEDGWICK COUNTY, KANSAS

OWNER: ZELDA M. HART HENDRICKSON
DEAN HENDRICKSON, HUSBAND

DRAINAGE PLAN

The lot when redeveloped as commercial development will be graded to drain south to Central as indicated. Discharge of runoff from the lot will be directed to Central thru drives or other approved means at the time of development. Central drains to the east.

DRAINAGE PLAN

BAUGHMAN COMPANY, P.A.
SURVEYING & ENGINEERING
316 262-1271 • 315 ELLIS • WICHITA, KANSAS 67211

10 FEB 1988