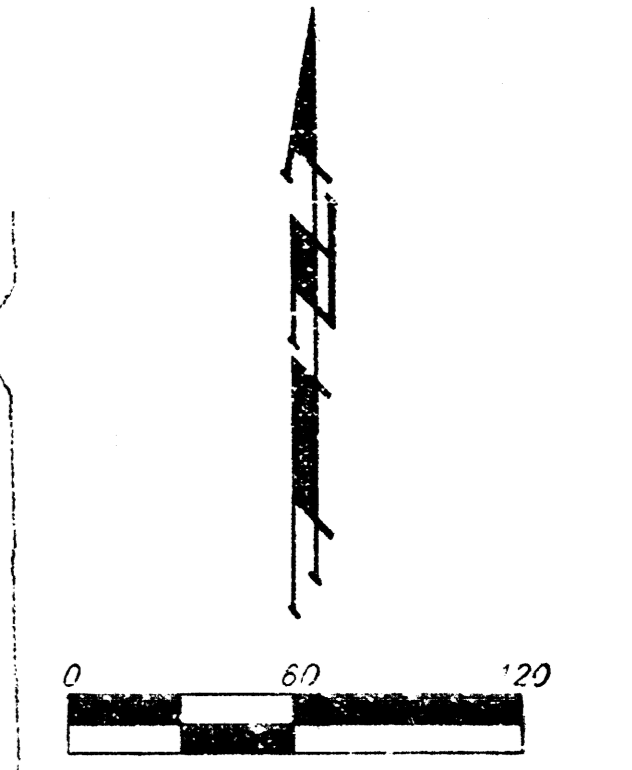
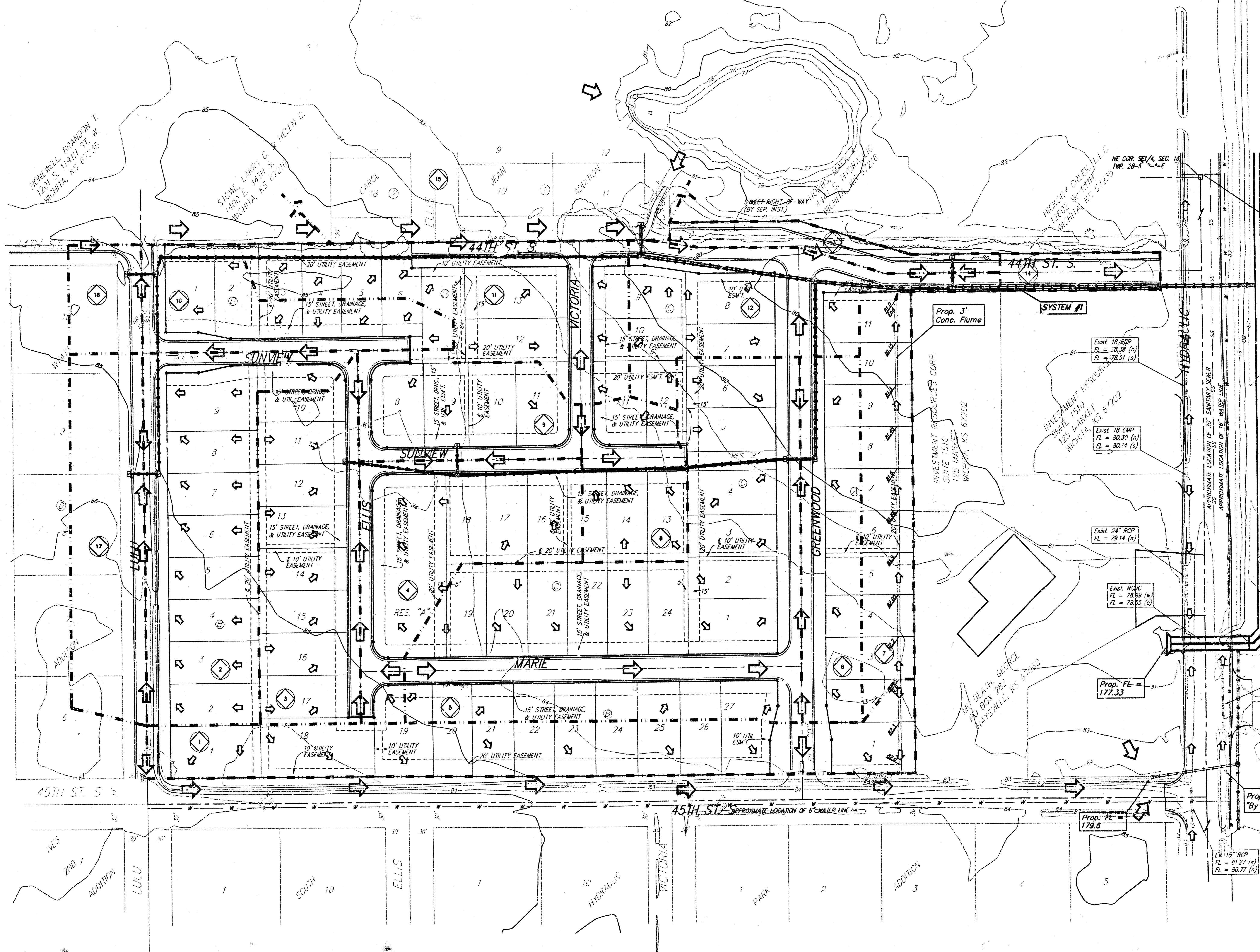


DRAINAGE PLAN HIDDEN GLEN AN ADDITION TO WICHITA, SEDGWICK COUNTY, KANSAS



- = #4 REBAR W/ "DAUGHMAN" CAP (SEE)
- = 1/4" IRON (FOUND)
- = 7/8" NAIL IN WASHER (FOUND)

Prop. Street Improvement
Per City Street & SWS
Project 472-76-245-83324

Prop. FL =
176.32

Prop. 2-7'x3' RCBC
By Others*

Ex. 18" RCP
FL = 80.15 (s)
FL = 79.82 (n)

Prop. 24" RCP
By Others*

Prop. FL =
177.33

Ex. 15" RCP
FL = 81.27 (s)
FL = 80.77 (n)

| Dist # | D.A. (%) | C _s | | | T _c (min) | Q | | |
|-----------|-------------|----------------|------|-------|-------------------------|-----|-----|-------|
| | | 2-y | 5-y | 100-y | | 2-y | 5-y | 100-y |
| 1 | 1.46 | 0.52 | 0.54 | 0.67 | 15 | 2.9 | 1.6 | 7.2 |
| 2 | 1.56 | 0.52 | 0.54 | 0.67 | 15 | 3.1 | 1.6 | 7.7 |
| 3 | 1.18 | 0.52 | 0.54 | 0.67 | 15 | 2.4 | 2.8 | 5.8 |
| 4 | 1.12 | 0.52 | 0.54 | 0.67 | 15 | 2.2 | 2.8 | 5.5 |
| 5 | 0.44 | 0.52 | 0.54 | 0.67 | 15 | 0.9 | 1.1 | 2.7 |
| 6 | 0.75 | 0.52 | 0.54 | 0.67 | 15 | 1.5 | 1.8 | 3.7 |
| 7 | 0.60 | 0.52 | 0.54 | 0.67 | 15 | 1.4 | 1.7 | 3.4 |
| 8 | 0.55 | 0.52 | 0.54 | 0.67 | 15 | 1.1 | 1.4 | 2.7 |
| 9 | 0.74 | 0.52 | 0.54 | 0.67 | 15 | 1.5 | 1.9 | 3.7 |
| 10 | 0.73 | 0.52 | 0.54 | 0.67 | 15 | 1.5 | 1.8 | 3.6 |
| 11 | 1.21 | 0.52 | 0.54 | 0.67 | 15 | 3.5 | 3.1 | 8.1 |
| 12 | 1.01 | 0.52 | 0.54 | 0.67 | 15 | 2.9 | 2.5 | 6.0 |
| 13 | 0.26 | 0.52 | 0.54 | 0.67 | 15 | 0.5 | 0.6 | 1.3 |
| 14 | 0.2 | 0.52 | 0.54 | 0.67 | 15 | 0.4 | 0.5 | 1.0 |
| 15 | 0.6 | 0.52 | 0.54 | 0.67 | 27 | 1.3 | 1.6 | 3.4 |
| 16 | 0.27 | 0.52 | 0.54 | 0.67 | 15 | 0.5 | 0.7 | 1.3 |
| 17 | 0.81 | 0.52 | 0.54 | 0.67 | 15 | 1.8 | 2.2 | 4.5 |

BENCHMARK:
City of Wichita benchmark, SE corner of intersection of
Hydraulic and 43rd St. South, 25.50' east and 35' north of
centerline.
Elev. = 84.89 City Datum

BAUGHMAN COMPANY P.A.
ENGINEERING, SURVEYING, & PLANNING
215 S. WILSON ST., WICHITA, KANSAS 67202
316-262-7871